



CHINOWETH & COHEN
COMMERCIAL

CONTACT

Kay Sullivan
BROKER-ASSOCIATE®

*Specializing in Commercial
Real Estate*

918.924.2405
ksullivan@cctulsa.com

Heather Agnew
REALTOR-ASSOCIATE®

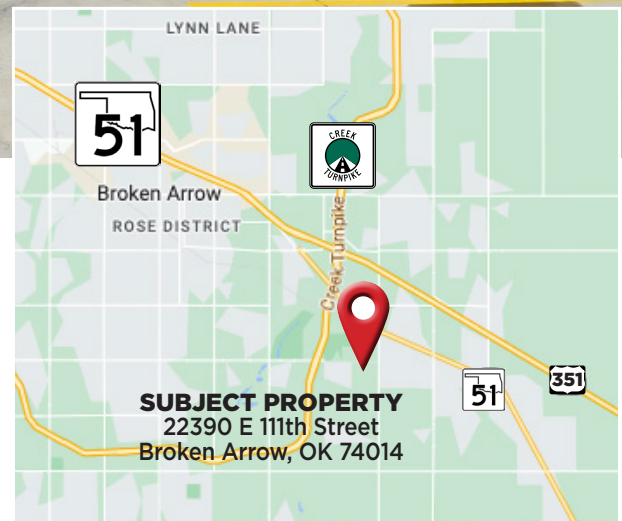
*Specializing in Commercial
Real Estate*

918.946.1918
hagnew@cctulsa.com

OFFICE/WAREHOUSE FOR SALE

22390 E 111th Street • Broken Arrow, OK 74014

62,800+/- SF Total



BUILDOUTS

- Commercial Kitchen with a smoker area outside the unit
- Living Quarters for an Ambulance Company
- Additional Offices and Conference Room in several units
- One 2500 sf space buildout with all offices, kitchen and open work space area
- Large office area used for call center and billing
- Gameroom/man cave
- One unit with three rollup doors and a yard space
- Each space has an office and restroom
- Warehouse is fully insulated
- Office and restrooms are climate controlled
- Phase-3 available
- Each space has a roll up door
- Plenty of parking

Information is deemed reliable but not guaranteed. Buyer to verify all information.

Office: 7510 E. 111th St South, Bixby, OK 74008 • Phone: 918-943-3009



CHINOWTH & COHEN
COMMERCIAL

CONTACT

Kay Sullivan
BROKER-ASSOCIATE®

*Specializing in Commercial
Real Estate*

918.924.2405
ksullivan@cctulsa.com

Heather Agnew
REALTOR-ASSOCIATE®

*Specializing in Commercial
Real Estate*

918.946.1918
hagnew@cctulsa.com

Office/Warehouse | 22390 E 111th Street | Broken Arrow, OK 74014

PHOTOS



Office: 7510 E. 111th St South, Bixby, OK 74008 • Phone: 918-943-3009



CHINOWETH & COHEN
COMMERCIAL

CONTACT

Kay Sullivan
BROKER-ASSOCIATE®

*Specializing in Commercial
Real Estate*

918.924.2405
ksullivan@cctulsa.com

Heather Agnew
REALTOR-ASSOCIATE®

*Specializing in Commercial
Real Estate*

918.946.1918
hagnew@cctulsa.com

Office/Warehouse | 22390 E 111th Street | Broken Arrow, OK 74014

PHOTOS - INTERIOR



Office: 7510 E. 111th St South, Bixby, OK 74008 • Phone: 918-943-3009



CHINOWTH & COHEN
COMMERCIAL

CONTACT

Kay Sullivan
BROKER-ASSOCIATE®

*Specializing in Commercial
Real Estate*

918.924.2405
ksullivan@cctulsa.com

Heather Agnew
REALTOR-ASSOCIATE®

*Specializing in Commercial
Real Estate*

918.946.1918
hagnew@cctulsa.com

Office/Warehouse | 22390 E 111th Street | Broken Arrow, OK 74014

PHOTOS - INTERIOR



Office: 7510 E. 111th St South, Bixby, OK 74008 • Phone: 918-943-3009



CHINOWETH & COHEN
COMMERCIAL

CONTACT

Kay Sullivan
BROKER-ASSOCIATE®

*Specializing in Commercial
Real Estate*

918.924.2405
ksullivan@cctulsa.com

Heather Agnew
REALTOR-ASSOCIATE®

*Specializing in Commercial
Real Estate*

918.946.1918
hagnew@cctulsa.com

Office/Warehouse | 22390 E 111th Street | Broken Arrow, OK 74014

PHOTOS - INTERIOR



Office: 7510 E. 111th St South, Bixby, OK 74008 • Phone: 918-943-3009



CHINOWTH & COHEN
COMMERCIAL

CONTACT

Kay Sullivan
BROKER-ASSOCIATE®

*Specializing in Commercial
Real Estate*

918.924.2405
ksullivan@cctulsa.com

Heather Agnew
REALTOR-ASSOCIATE®

*Specializing in Commercial
Real Estate*

918.946.1918
hagnew@cctulsa.com

Office/Warehouse | 22390 E 111th Street | Broken Arrow, OK 74014

PHOTOS - INTERIOR



Office: 7510 E. 111th St South, Bixby, OK 74008 • Phone: 918-943-3009



CHINOWETH & COHEN
COMMERCIAL

CONTACT

Kay Sullivan
BROKER-ASSOCIATE®

*Specializing in Commercial
Real Estate*

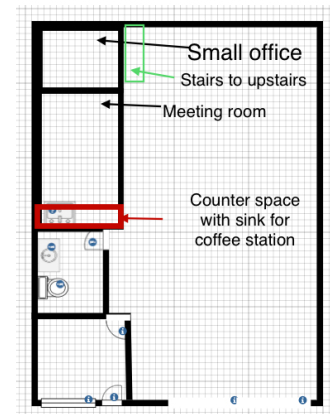
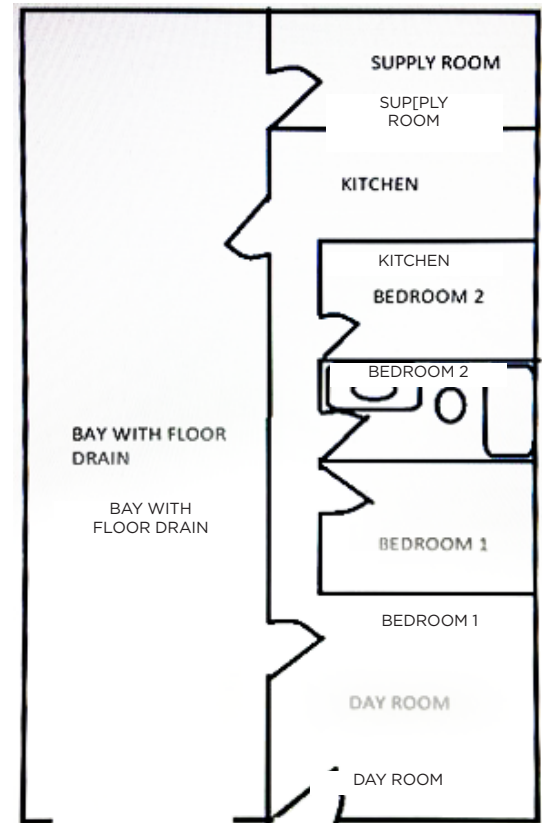
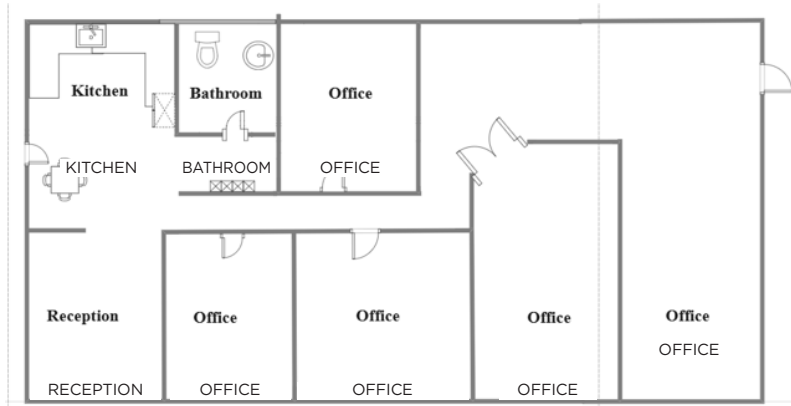
918.924.2405
ksullivan@cctulsa.com

Heather Agnew
REALTOR-ASSOCIATE®

*Specializing in Commercial
Real Estate*

918.946.1918
hagnew@cctulsa.com

**Plans of some build outs in the spaces.
We also have a commercial kitchen in a space.**



Office/Warehouse
22390 E 111th Street
Broken Arrow, OK 74014

Office: 7510 E. 111th St South, Bixby, OK 74008 • Phone: 918-943-3009



CHINOWTH & COHEN
COMMERCIAL

CHINOWTH & COHEN COMMERCIAL IS A DIVISION OF CHINOWTH
& COHEN REALTORS, RECOGNIZED AS THE LARGEST #1
INDEPENDENT REAL ESTATE COMPANY IN OKLAHOMA

Office: 7510 E. 111th St South, Bixby, OK 74008 • Phone: 918-943-3009