

**FOR LEASE**

47,202± SF INDUSTRIAL SPACE

Property Highlights

- 47,202± SF total square feet
 - 721± SF office
 - 46,481± industrial
- Yard space available
- 20' ceiling height
- Six (6) truck height loading docks
- Six (6) drive-in doors (14' high)



EXCLUSIVE CONTACT

Gary G. Cottet
Associate Real Estate Broker
+1 315 445 8529
gcottet@pyramidbrokerage.com

Mark Austin
Real Estate Salesperson
+1 315 445 8538
maustin@pyramidbrokerage.com

5845 Widewaters Parkway, Suite 200
East Syracuse, New York 13057
+1 315 445 1030
pyramidbrokerage.com



**CUSHMAN &
WAKEFIELD**



**Pyramid Brokerage
Company**

**2801 Court Street
Syracuse, New York 13208**



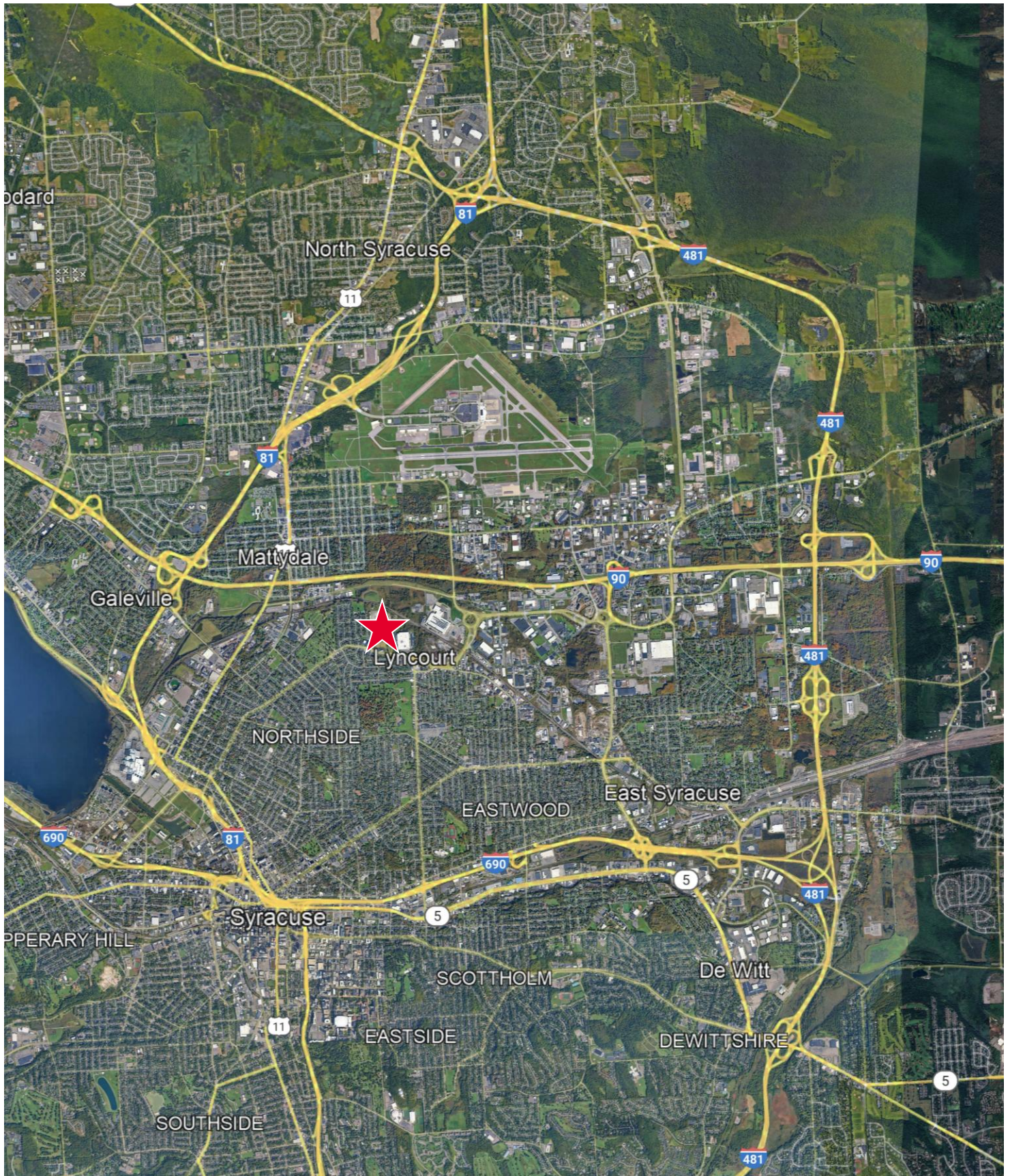


**CUSHMAN &
WAKEFIELD**



**Pyramid Brokerage
Company**

**2801 Court Street
Syracuse, New York 13208**



Independently Owned and Operated / A Member of the Cushman & Wakefield Alliance

Cushman & Wakefield Copyright 2025. No warranty or representation, express or implied, is made to the accuracy or completeness of the information contained herein, and same is submitted subject to errors, omissions, change of price, rental or other conditions, withdrawal without notice, and to any special listing conditions imposed by the property owner(s). As applicable, we make no representation as to the condition of the property (or properties) in question.