



Glass Banded Office

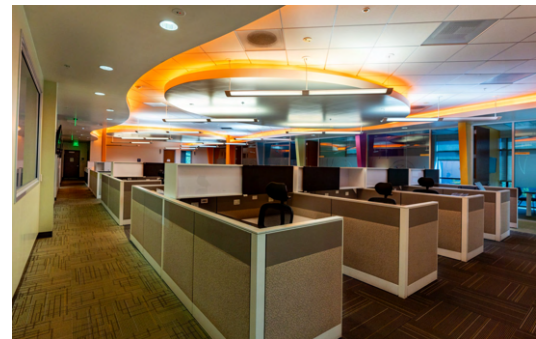
Available For Lease

Moving Incentive

3810 Durbin St, Irwindale, CA 91706



**Pride of Ownership Building -
Phoenix Satellite TV Inc.**



About The Property

Two-Story Office Building of Approximately 29,400 SF | Situated on Approximately 74,532 SF Lot
Suite 202-205 approximately 127 SF space | Suite 206 Approximately 127 SF space
Suite 207 Approximately 127 SF space | Suite 208 Approximately 441 SF space
Suite 209 Approximately 132 SF space

Aldon Lai

Cell: 626-552-1028

Lic#: 01855739

Contact Me for Property Information

AldonLaiCW@gmail.com



Aldon Lai

Cell: 626-552-1028

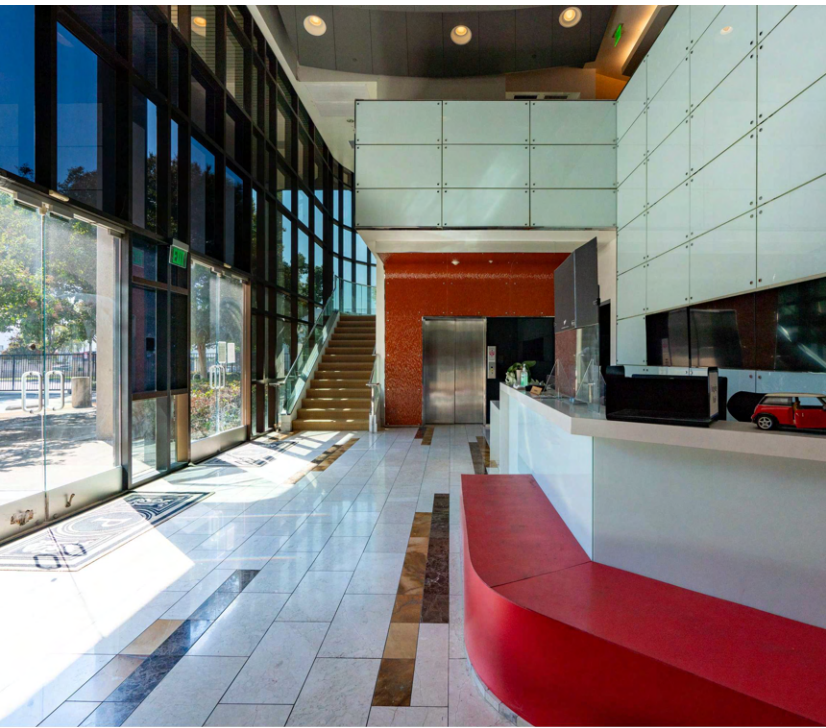
Lic#: 01855739

Contact Me for Property Information

AldonLaiCW@gmail.com



This is not intended to solicit a currently listed home. Information is deemed reliable, but not guaranteed.



Features

- Flexible Terms: year to year or long-term
- Excellent freeway access to 10, 60 and 605 Freeways
- Professional layouts with above standard finishes
- Glass Banded Office
- Beautiful Conference Room
- Elevator Serviced
- Security guards & Surveillance Cameras & gated premises
- On-site MGMT fee 4% of Rent Base.
- Business-graded phones and internet connectivity available
- 24/7 hour suite access
- utility, Property tax included.
- Excluded Liability Insurance



Office Building | Security Gated | Ample Parking



Aldon Lai

Cell: 626-643-3082

AldonLaiCW@gmail.com

Contact Me for more detail
Information