

# FOR SALE ► INDUSTRIAL LAND

17639 Avenue 24 1/2, Chowchilla, CA 93610

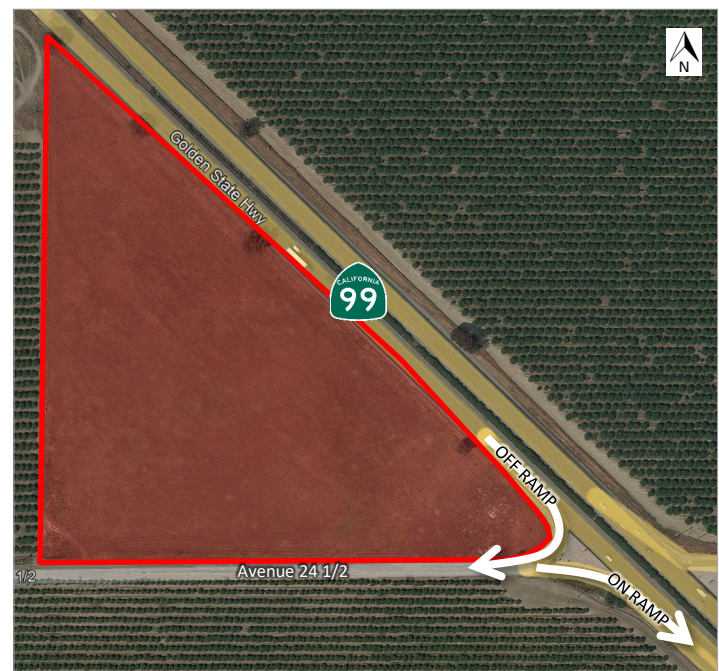


**SELLER FINANCING AVAILABLE!**

**SUBJECT  
SITE**

## PROPERTY DETAILS

- Asking Price: ~~\$1,800,000.00~~ \$1,300,000.00
- Available: 13.98 AC (approx.)
- APN: 002-350-002-000
- Zoned: Light Industrial in the City of Chowchilla
- Light industrial property with easy access to CA-99
- Immediate southbound access CA-99 on/off ramps
- 0.75 miles proximity to overpass with both north and south on/off ramps
- Located near Chowchilla Municipal Airport
- Seller financing available



9810 Brimhall Road

Bakersfield, CA 93312

[www.oliviericommercial.com](http://www.oliviericommercial.com)

**Anthony Olivieri, CCIM, CRX**

President

Lic. 01325989

(661) 617-1850

[anthony@oliviericommercial.com](mailto:anthony@oliviericommercial.com)

**J-P Masuda**

Senior Vice President

Lic. 01947962

(661) 617-1849

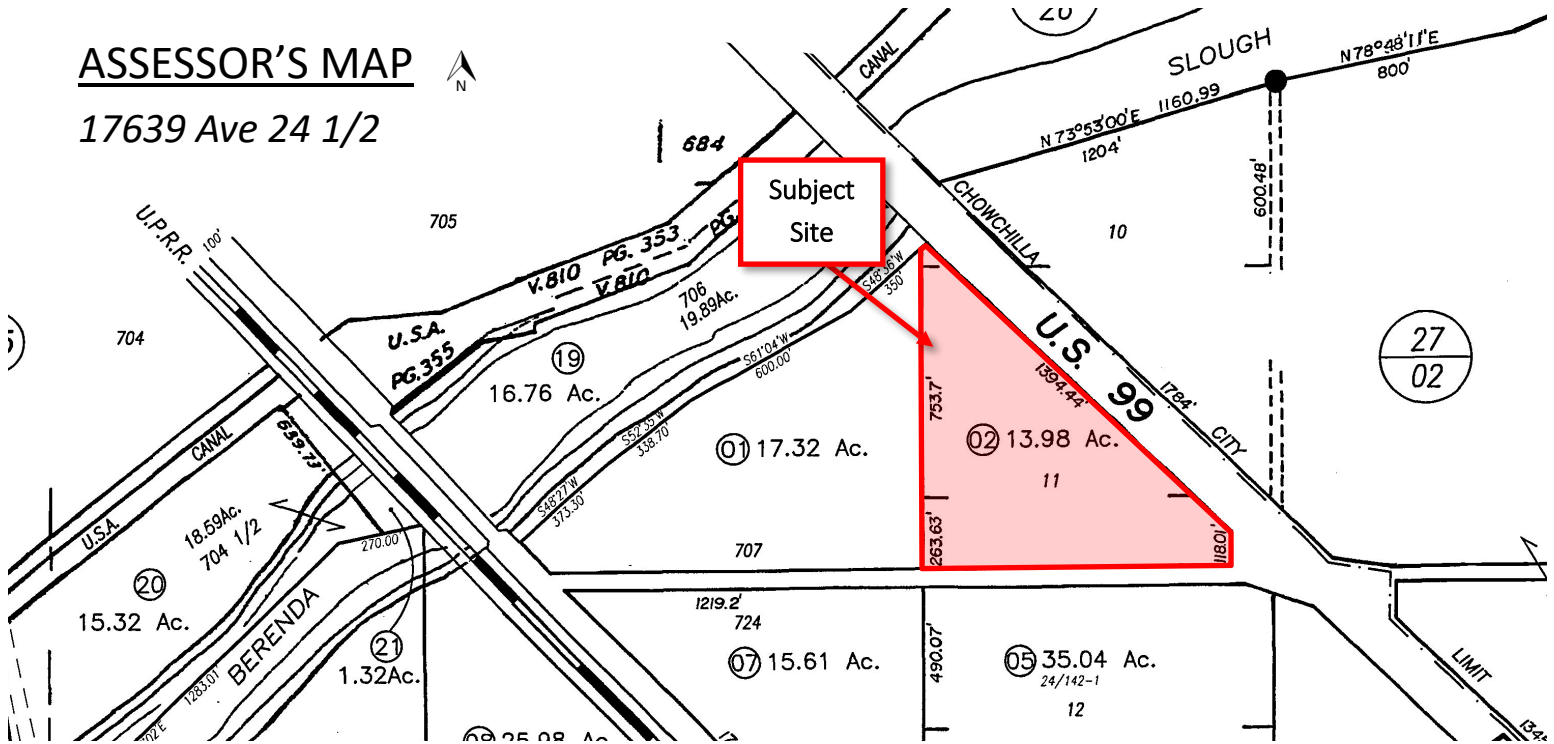
[jpmasuda@oliviericommercial.com](mailto:jpmasuda@oliviericommercial.com)

# FOR SALE ► INDUSTRIAL LAND

17639 Avenue 24 1/2, Chowchilla, CA 93610



OLIVIERI  
COMMERCIAL GROUP



9810 Brimhall Road  
Bakersfield, CA 93312  
[www.oliviericommercial.com](http://www.oliviericommercial.com)

**Anthony Olivieri, CCIM, CRX**  
President  
Lic. 01325989  
(661) 617-1850

[anthony@oliviericommercial.com](mailto:anthony@oliviericommercial.com)

**J-P Masuda**  
Senior Vice President  
Lic. 01947962  
(661) 617-1849

[jpmasuda@oliviericommercial.com](mailto:jpmasuda@oliviericommercial.com)

The information above has been obtained from sources believed reliable. While we do not doubt its accuracy we have not verified it and make no guarantee, warranty or representation about it. It is your responsibility to independently confirm its accuracy and completeness. Any projections, opinions, assumptions or estimates used are for example only and do not represent the current or future performance of the property. The value of this transaction to you depends on tax and other factors which should be evaluated by your tax, financial and legal advisors. You and your advisors should conduct a careful, independent investigation of the property to determine to your satisfaction the suitability of the property for your needs. Logos are for identification purposes only and may be trademarks of their respective companies.