



Property for Sale or For Lease

531

Sherbrooke Street East
Montréal, Québec

CBRE

CBRE URBAN PROPERTIES | MONTREAL

Financial Information

Lease Terms	5 - 10 years
Total Building Area	7,880 sq. ft. <small>*Total of the 4 floors</small>
Gross Rent	\$28.00 per sq. ft.
Availability	Immediate
Hydro (Average monthly)	\$909.58
Sale Price	Contact us

Lease requirement: 2 floors minimun

Property Details



Located on Sherbrooke Street East between Berri and Saint-Hubert Streets



Garage parking fits 3 cars + 1 entrance parking



Lofty modern building with exposed brick



Steps away from the Sherbrooke metro station



Direct elevator access



Total Population: 236,689

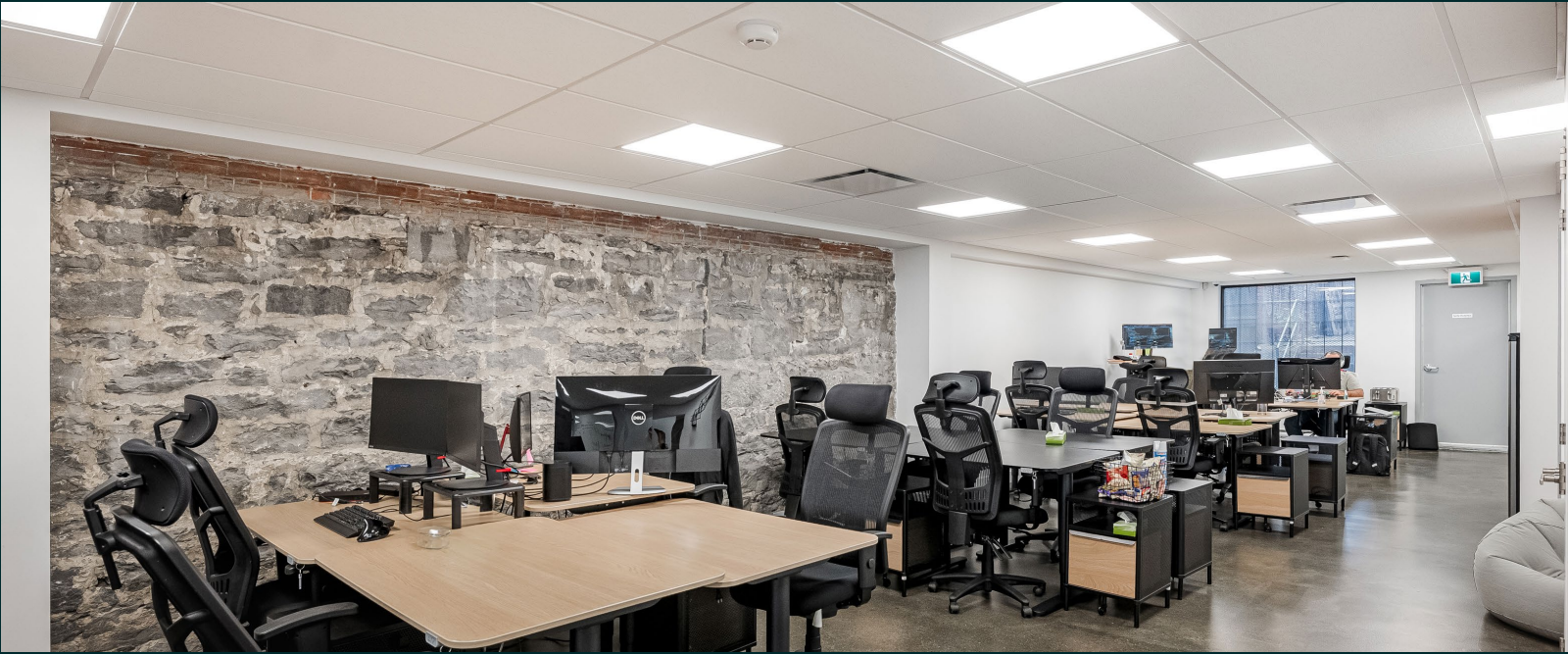
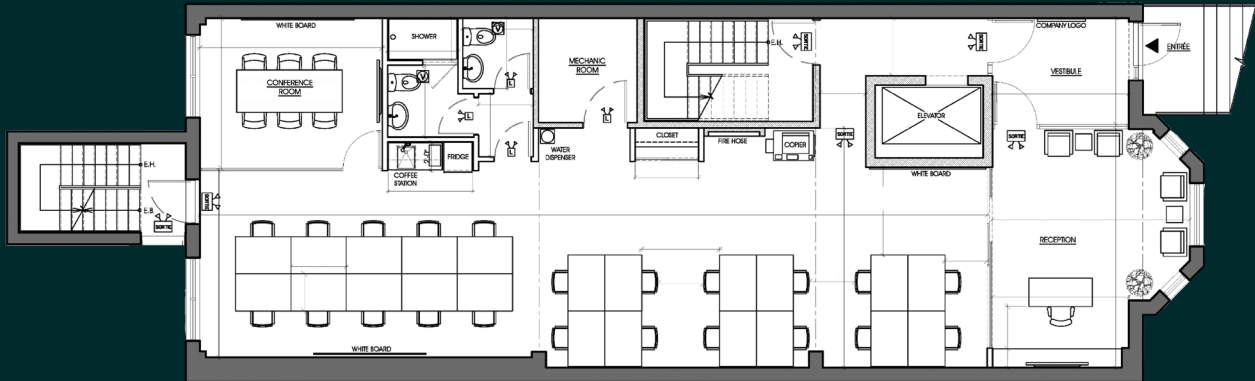
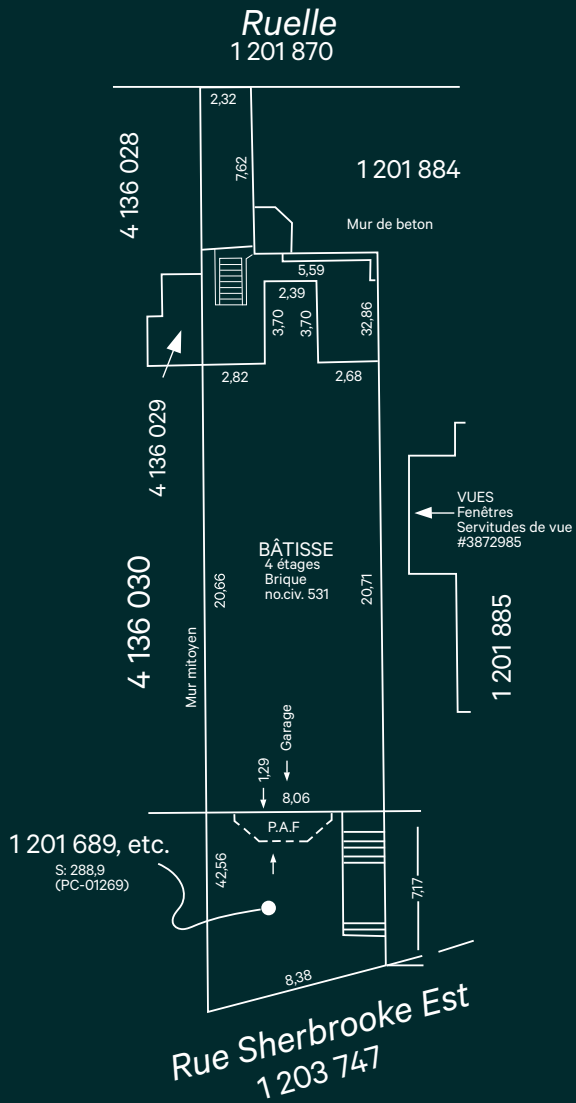


Median Age: 34.9

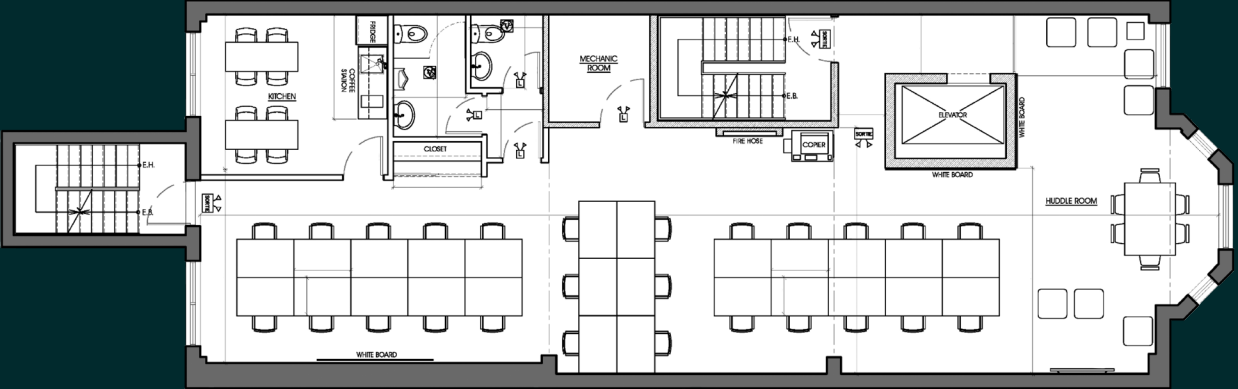


Average Income per Household: \$117,639

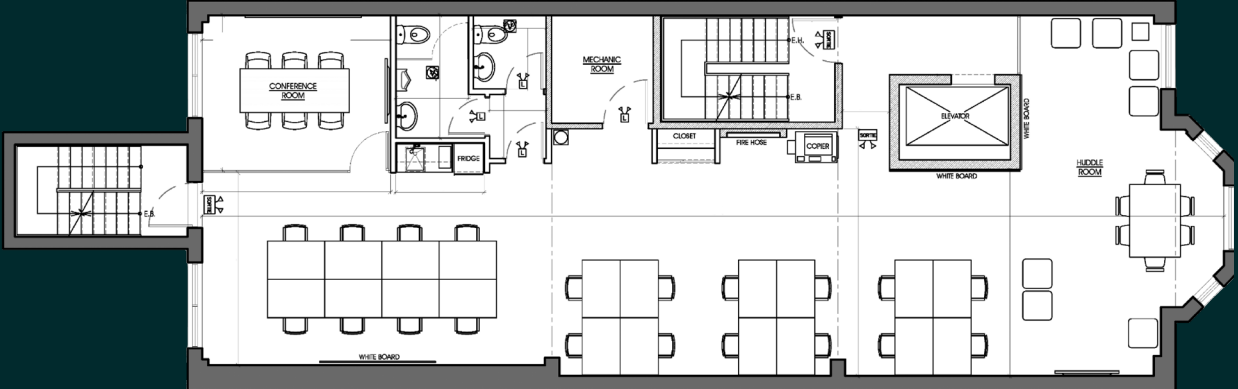
Ground floor: 1,970 sq. ft.



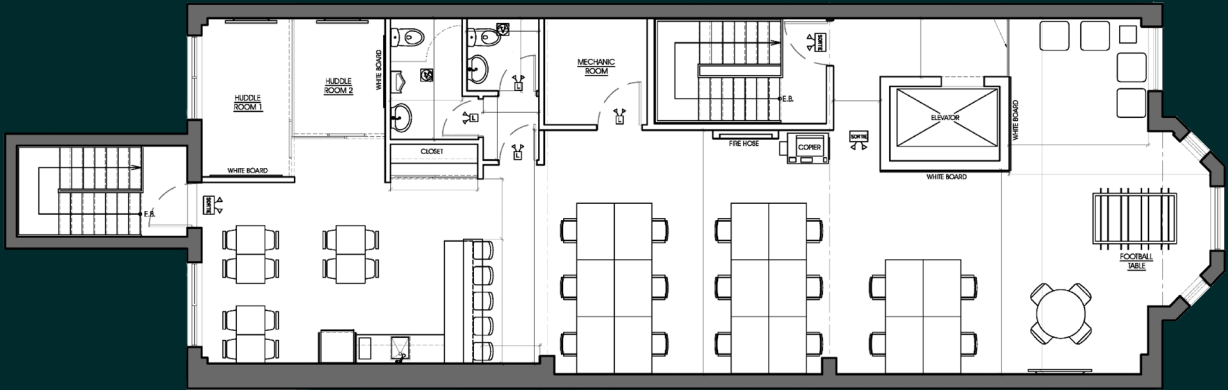
2nd floor: 1,970 sq. ft.



3rd floor: 1,970 sq. ft.

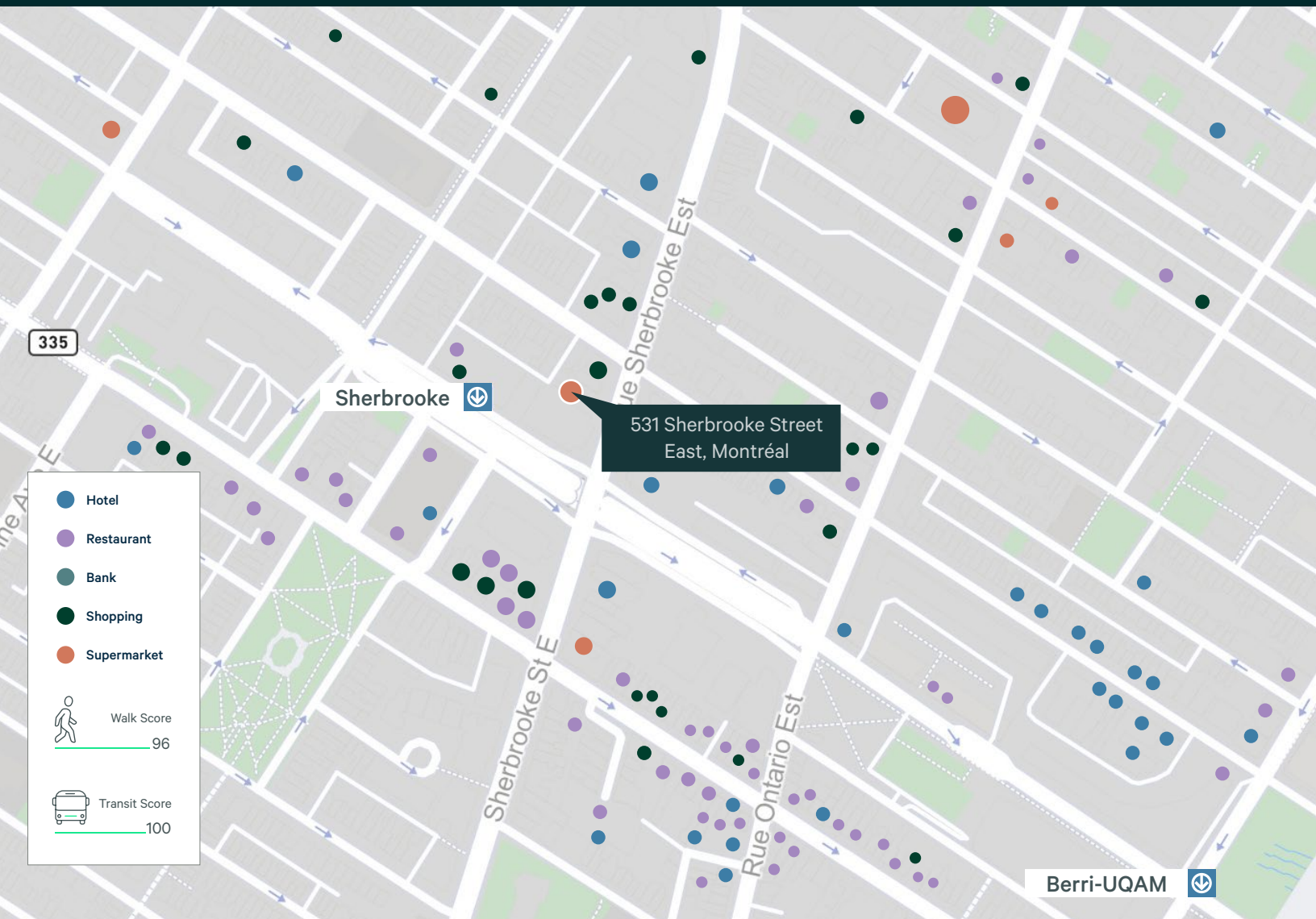


4th floor: 1,970 sq. ft.



Location

531 Sherbrooke Street East
Montréal, Québec



Contact Us

Christopher Rundle
Vice President
Real Estate Broker
+1 514 375 0818
christopher.rundle@cbre.com

Bryan Greenberg
Associate Vice President
Commercial Real Estate Broker
+1 514 375 2507
bryan.greenberg@cbre.com

Amanda Angela Herbu
Associate
Commercial Real Estate Broker
+1 514 375 0456
amanda.herbu@cbre.com

CBRE Limited, Real Estate Agency | 1250 René-Lévesque Blvd West, Suite 2800 | Montréal, Québec H3B 4W8 | +1 514 849 6000 | www.cbre.ca

This disclaimer shall apply to CBRE Limited, Real Estate Agency, and to all other divisions of the Corporation; to include all employees and independent contractors ("CBRE"). The information set out herein, including, without limitation, any projections, images, opinions, assumptions and estimates obtained from third parties (the "Information") has not been verified by CBRE, and CBRE does not represent, warrant or guarantee the accuracy, correctness and completeness of the Information. CBRE does not accept or assume any responsibility or liability, direct or consequential, for the Information or the recipient's reliance upon the Information. The recipient of the Information should take such steps as the recipient may deem necessary to verify the Information prior to placing any reliance upon the Information. The Information may change and any property described in the Information may be withdrawn from the market at any time without notice or obligation to the recipient from CBRE. CBRE and the CBRE logo are the service marks of CBRE Limited and/or its affiliated or related companies in other countries. All other marks displayed on this document are the property of their respective owners. All Rights Reserved. Mapping Sources: Canadian Mapping Services canadamapping@cbre.com; DMTI Spatial, Environics Analytics, Microsoft Bing, Google Earth.