

MIDWOOD, BROOKLYN NY

# 1575 EAST 19TH ST.

MOD



# SPACE DETAILS

## LOCATION

East 19th Between Ave O and Ave P

## LOCATION INFO

5 Story Class A office building in the heart of Midwood. 18,000 SQFT building available for lease. Seeking Medical, Non-profit, schools, daycares, or office users. Ownership will turn key spaces for qualified tenants.

## SPACE

Lower Level	3,600 SQFT
1st Floor	3,600 SQFT
2nd Floor	2,400 SQFT
3rd Floor	2,400 SQFT
4th Floor	2,400 SQFT

\*Possible divisions for 1,200 SQFT

## POSSESSION

Immediate

## CONTACTS

### MEYER DAGMY

718-249-3613

m@modcre.com

**2774 CONEY ISLAND AVE, BROOKLYN, NY 11235**

## NEIGHBORS

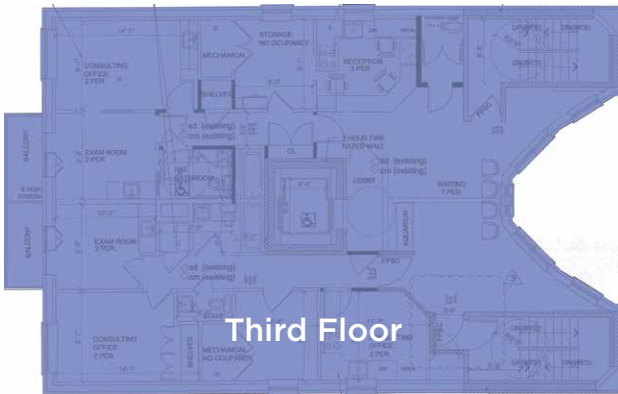
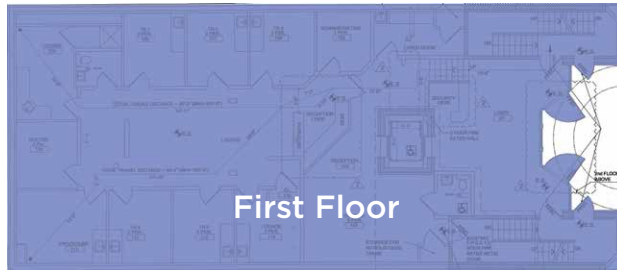
Maimonides Medical Center, Davita, USPS, Walgreens, CVS, Dunkin, Chase Bank, Citibank, Planet Fitness, Dime Community Bank, HR Block, Subway, Verizon.

## COMMENTS

- Landlord to deliver the space in Vanilla Box condition
- TI Available for Qualified Tenants
- Seeking Medical Tenants
- Full basement with 9' clear ceilings
- Seeking Medical, Non-Profit, School, Office Tenants
- Three blocks to the Kings Highway (Q B) train with annual ridership of 1,978,254

The logo for MOD Commercial Realty, consisting of the letters 'MOD' in a white, sans-serif font centered within a dark blue square.

# FLOOR PLANS



# CONTACTS

**MEYER DAGMY**

718-249-3613

m@modcre.com

**2774 CONEY ISLAND AVE, BROOKLYN, NY 11235**

