

13,697 RSF

FOR LEASING INFO
PLEASE CONTACT:

SHEILA BALE
MANAGING DIRECTOR
+1 602 224 4454
sheila.bale@cushwake.com

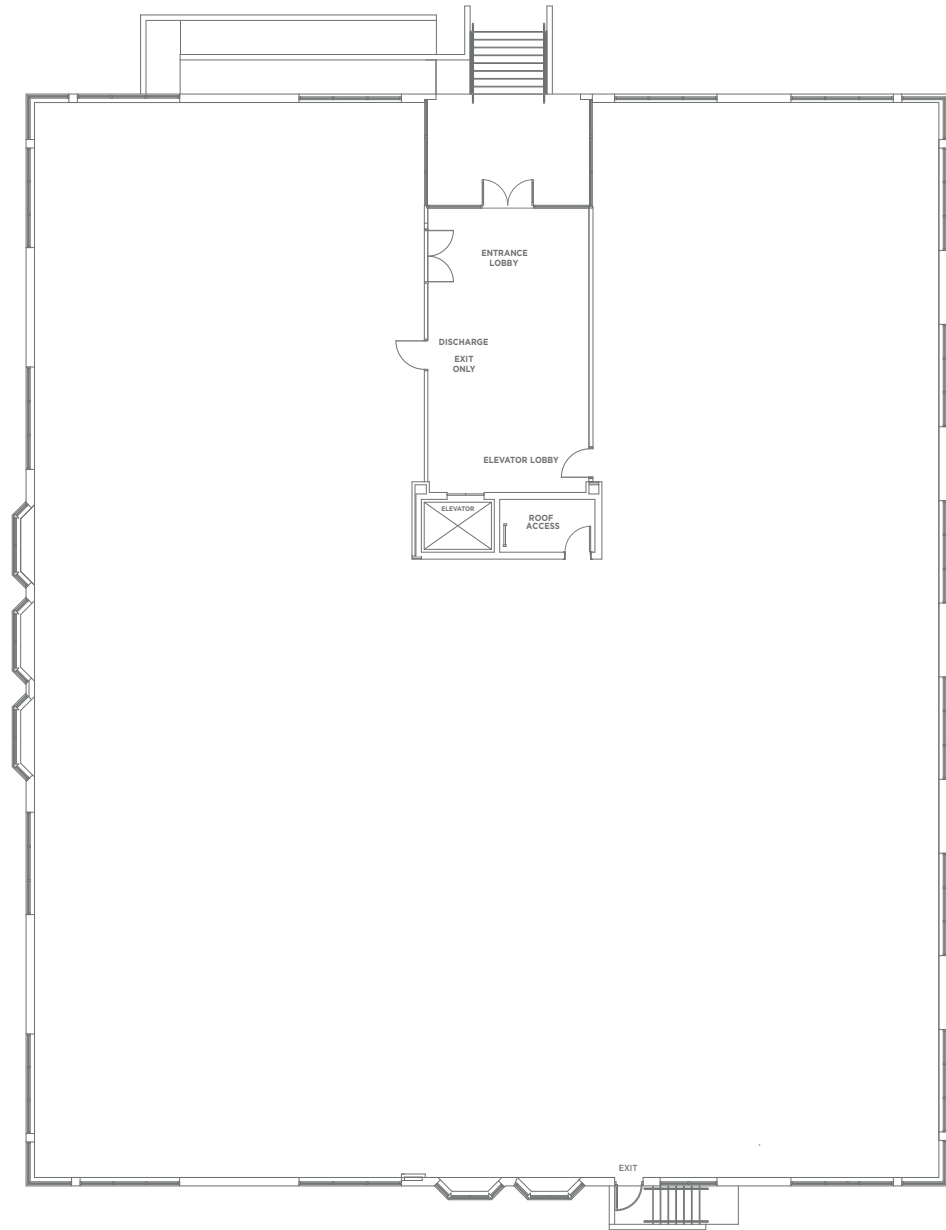
ERIKA ECKBLAD
SENIOR ASSOCIATE
+1 602 224 4451
erika.eckblad@cushwake.com

TOM WEINHOLD
MANAGING DIRECTOR
+1 602 224 4428
tom.weinhold@cushwake.com



2555 E Camelback Rd, Suite 400
Phoenix, Arizona 85016
Main +1 602 954 9000
Fax +1 602 253 0528
cushmanwakefield.com

ARCADIA MEDICAL CAMPUS



Virtual Spec Plan Tour

3303 N 44TH STREET PHOENIX, AZ 85018

Healthpeak® | DOC
LISTED
NYSE

©2023 Cushman & Wakefield. All rights reserved. The information contained in this communication is strictly confidential. This information has been obtained from sources believed to be reliable but has not been verified. NO WARRANTY OR REPRESENTATION, EXPRESS OR IMPLIED, IS MADE AS TO THE CONDITION OF THE PROPERTY (OR PROPERTIES) REFERENCED HEREIN OR AS TO THE ACCURACY OR COMPLETENESS OF THE INFORMATION CONTAINED HEREIN, AND SAME IS SUBMITTED SUBJECT TO ERRORS, OMISSIONS, CHANGE OF PRICE, RENTAL OR OTHER CONDITIONS, WITHDRAWAL WITHOUT NOTICE, AND TO ANY SPECIAL LISTING CONDITIONS IMPOSED BY THE PROPERTY OWNER(S). ANY PROJECTIONS, OPINIONS OR ESTIMATES ARE SUBJECT TO UNCERTAINTY AND DO NOT SIGNIFY CURRENT OR FUTURE PROPERTY PERFORMANCE. COE-PM-WEST-10/12/2023

13,697 RSF

PROPOSED SPEC PLAN

FOR LEASING INFO
PLEASE CONTACT:

SHEILA BALE
MANAGING DIRECTOR
+1 602 224 4454
sheila.bale@cushwake.com

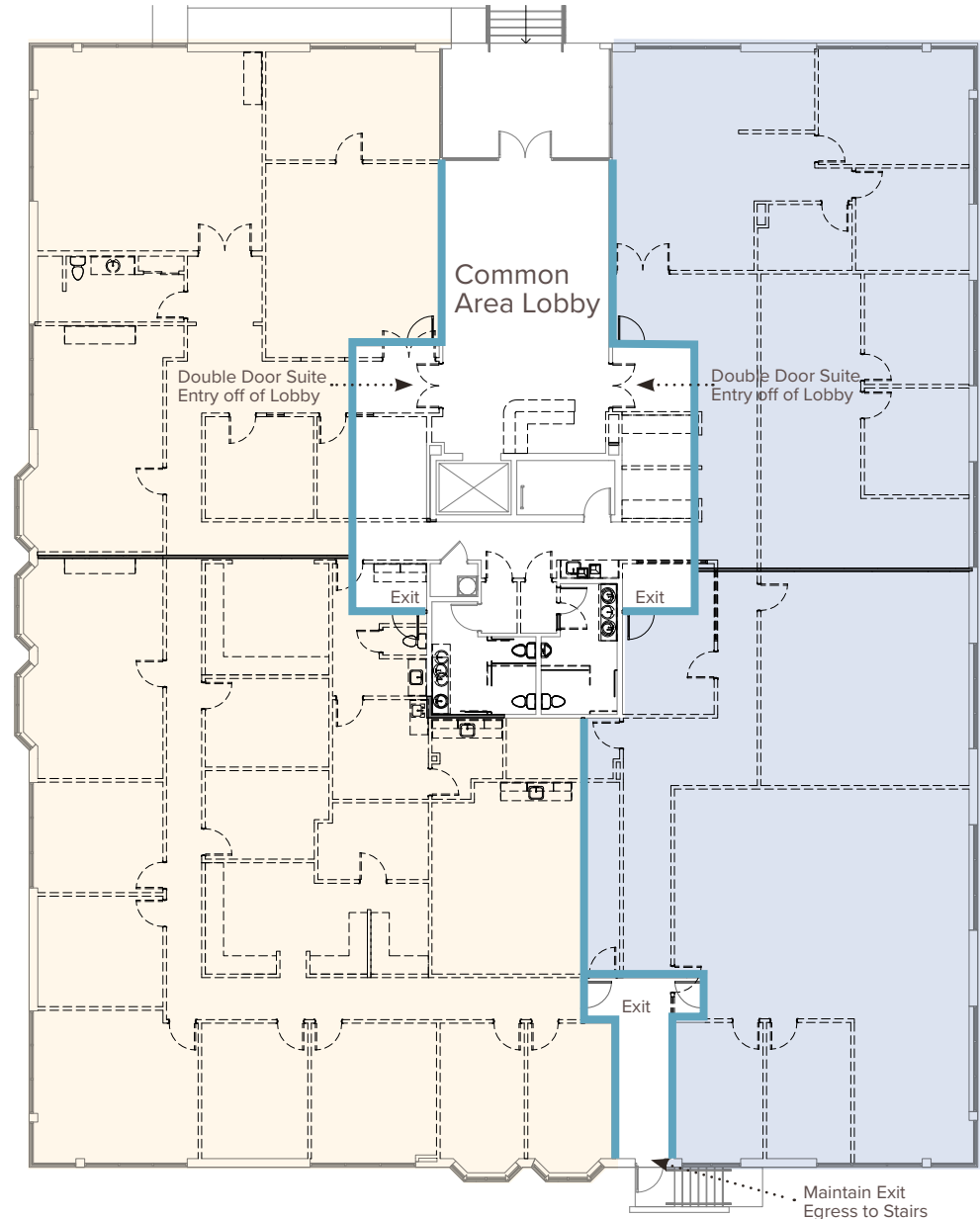
ERIKA ECKBLAD
SENIOR ASSOCIATE
+1 602 224 4451
erika.eckblad@cushwake.com

TOM WEINHOLD
MANAGING DIRECTOR
+1 602 224 4428
tom.weinhold@cushwake.com



2555 E Camelback Rd, Suite 400
Phoenix, Arizona 85016
Main +1 602 954 9000
Fax +1 602 253 0528
cushmanwakefield.com

ARCADIA
MEDICAL
CAMPUS



— INDICATES LINE OF DEMISE

3303 N 44TH STREET PHOENIX, AZ 85018

Healthpeak® | DOC
LISTED
NYSE

©2023 Cushman & Wakefield. All rights reserved. The information contained in this communication is strictly confidential. This information has been obtained from sources believed to be reliable but has not been verified. NO WARRANTY OR REPRESENTATION, EXPRESS OR IMPLIED, IS MADE AS TO THE CONDITION OF THE PROPERTY (OR PROPERTIES) REFERENCED HEREIN OR AS TO THE ACCURACY OR COMPLETENESS OF THE INFORMATION CONTAINED HEREIN, AND SAME IS SUBMITTED SUBJECT TO ERRORS, OMISSIONS, CHANGE OF PRICE, RENTAL OR OTHER CONDITIONS, WITHDRAWAL WITHOUT NOTICE, AND TO ANY SPECIAL LISTING CONDITIONS IMPOSED BY THE PROPERTY OWNER(S). ANY PROJECTIONS, OPINIONS OR ESTIMATES ARE SUBJECT TO UNCERTAINTY AND DO NOT SIGNIFY CURRENT OR FUTURE PROPERTY PERFORMANCE. COE-PM-WEST-10/12/2023