

1218

W SHADY GROVE

Grand Prairie, TX 75050

5,760 SF on 2.78 Acres
Industrial Outside Storage
FOR SALE



DREW JACOY, VICE PRESIDENT

214-546-0203

DREW@RICHYOUNGCOMPANY.COM



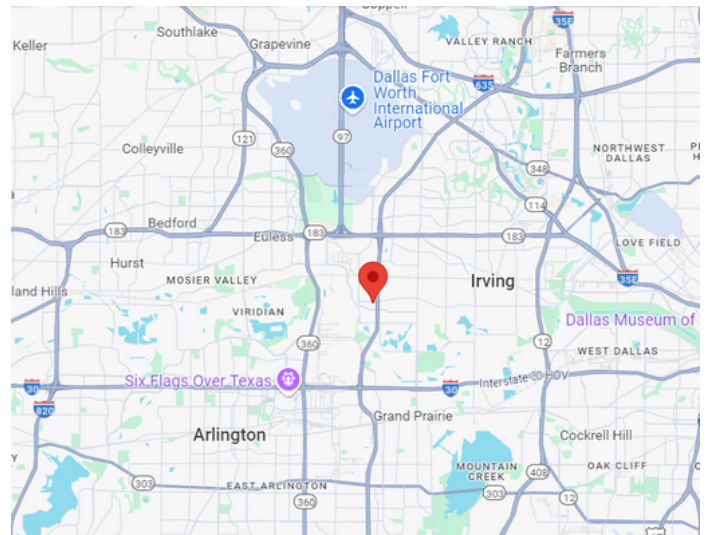
5710 LBJ FREEWAY | SUITE 150
DALLAS, TEXAS 75240
972-236-7645

1218 W SHADY GROVE Grand Prairie, TX 75050

5,760 SF on 2.78 Acres
Industrial Outside Storage
FOR SALE

PROPERTY HIGHLIGHTS

- Property Total 2.78 Acres with private drive
 - 1,680 SF Office
 - 3,480 SF Warehouse
 - 600 SF Shed with Large Carport
 - Approximately 1 Acre of unimproved land
- Fenced and Gated Yard
- Easy Highway Access to 161, 183 and I-30



DREW JACOY, VICE PRESIDENT

214-546-0203

DREW@RICHYOUNGCOMPANY.COM



5710 LBJ FREEWAY | SUITE 150
DALLAS, TEXAS 75240
972-236-7645

1218

W SHADY GROVE

Grand Prairie, TX 75050

5,760 SF on 2.78 Acres
Industrial Outside Storage
FOR SALE



DREW JACOY, VICE PRESIDENT

214-546-0203

DREW@RICHYOUNGCOMPANY.COM



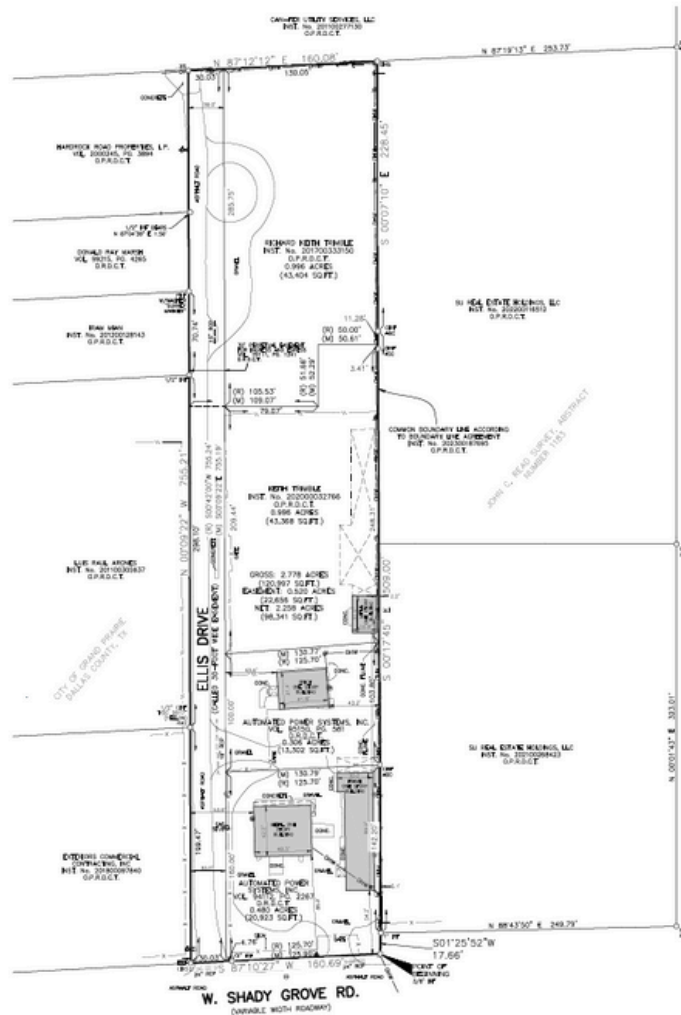
5710 LBJ FREEWAY | SUITE 150
DALLAS, TEXAS 75240
972-236-7645

1218

W SHADY GROVE

Grand Prairie, TX 75050

5,760 SF on 2.78 Acres
 Industrial Outside Storage
FOR SALE



DREW JACOY, VICE PRESIDENT
 214-546-0203
 DREW@RICHYOUNGCOMPANY.COM



5710 LBJ FREEWAY | SUITE 150
 DALLAS, TEXAS 75240
 972-236-7645