



## 980 CORPORATE WOODS PARKWAY

The Corporate Woods  
Vernon Hills, Illinois

**Unit:** 10,526 Sq. Ft.

**Office:** 5,800 Sq. Ft.

### TERMS:

Base Rent: As-Quoted

Escalation: 3% Per Year

Real Estate Taxes: \$1.98 (2024)

CAM & Insurance: \$1.24 (2024)

### HIGHLIGHTS:

- Lower Lake County Taxes
- Property Features Award-Winning Landscaping with a Scenic Pond and Waterfall
- T-8 High Efficiency Lighting

### BUILDING DATA:

Ceiling Height: 16'

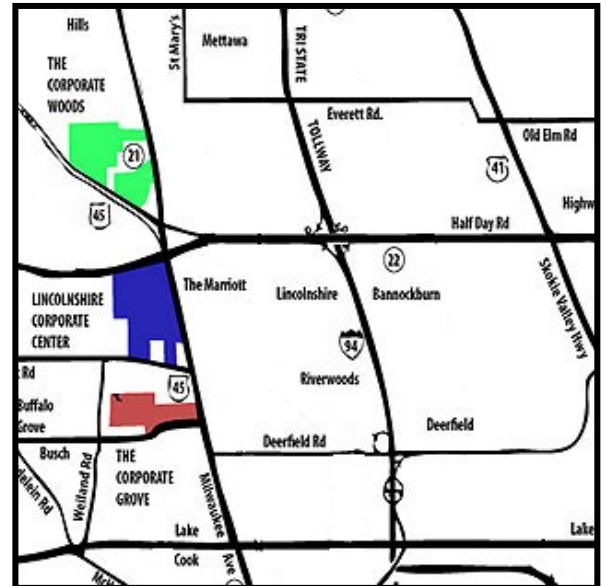
Sprinkler System: Yes

### SHIPPING:

Truck Docks: 1 (Exterior)

### POSSESSION:

60 days



### Exclusive Leasing and Management Agents



## VAN VLISSINGEN AND CO.

One Overlook Point  
Lincolnshire Corporate Center  
Lincolnshire, Illinois 60069

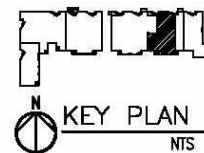
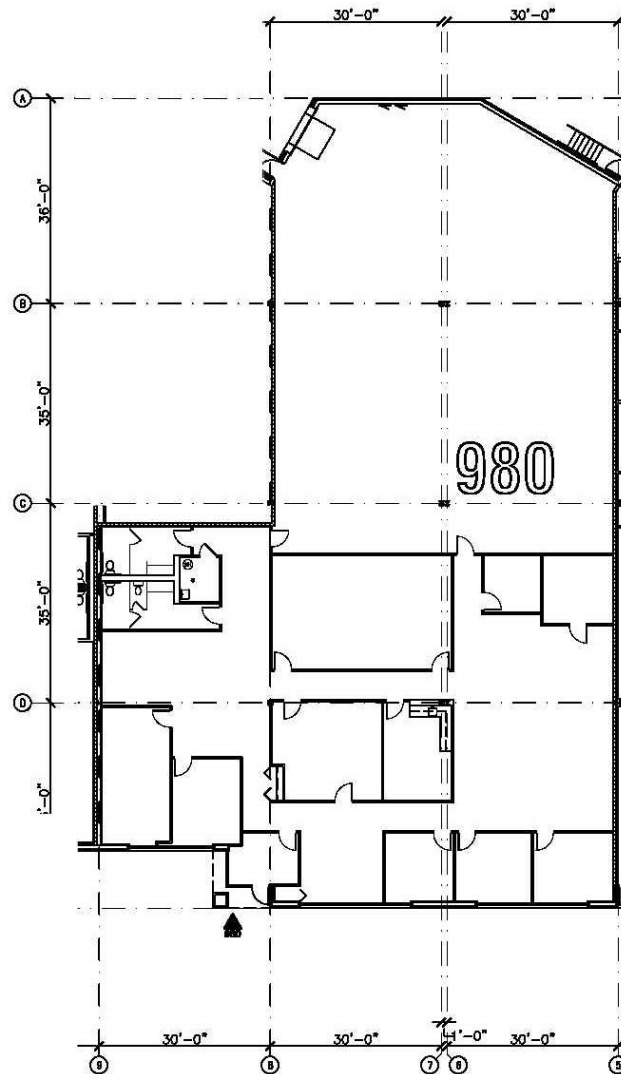
**847.634.2300**

Chuck Lamphere, President  
[cl@vvco.com](mailto:cl@vvco.com)

Nick Panarese, Executive VP, SIOR  
[ndp@vvco.com](mailto:ndp@vvco.com)

# 980 CORPORATE WOODS PARKWAY

The Corporate Woods  
Vernon Hills, Illinois



## Exclusive Leasing and Management Agents

### VAN VLISSINGEN AND CO.

One Overlook Point  
Lincolnshire Corporate Center  
Lincolnshire, Illinois 60069

**847.634.2300**

Chuck Lamphere, President  
[crl@vvco.com](mailto:crl@vvco.com)

Nick Panarese, Executive VP, SIOR  
[ndp@vvco.com](mailto:ndp@vvco.com)

*Above information is subject to verification and no liability for errors or omissions is assumed. Price is subject to change and listing withdrawn without notice. Members of this firm have an ownership interest in this property. © Copyright 2024 All Rights Reserved*