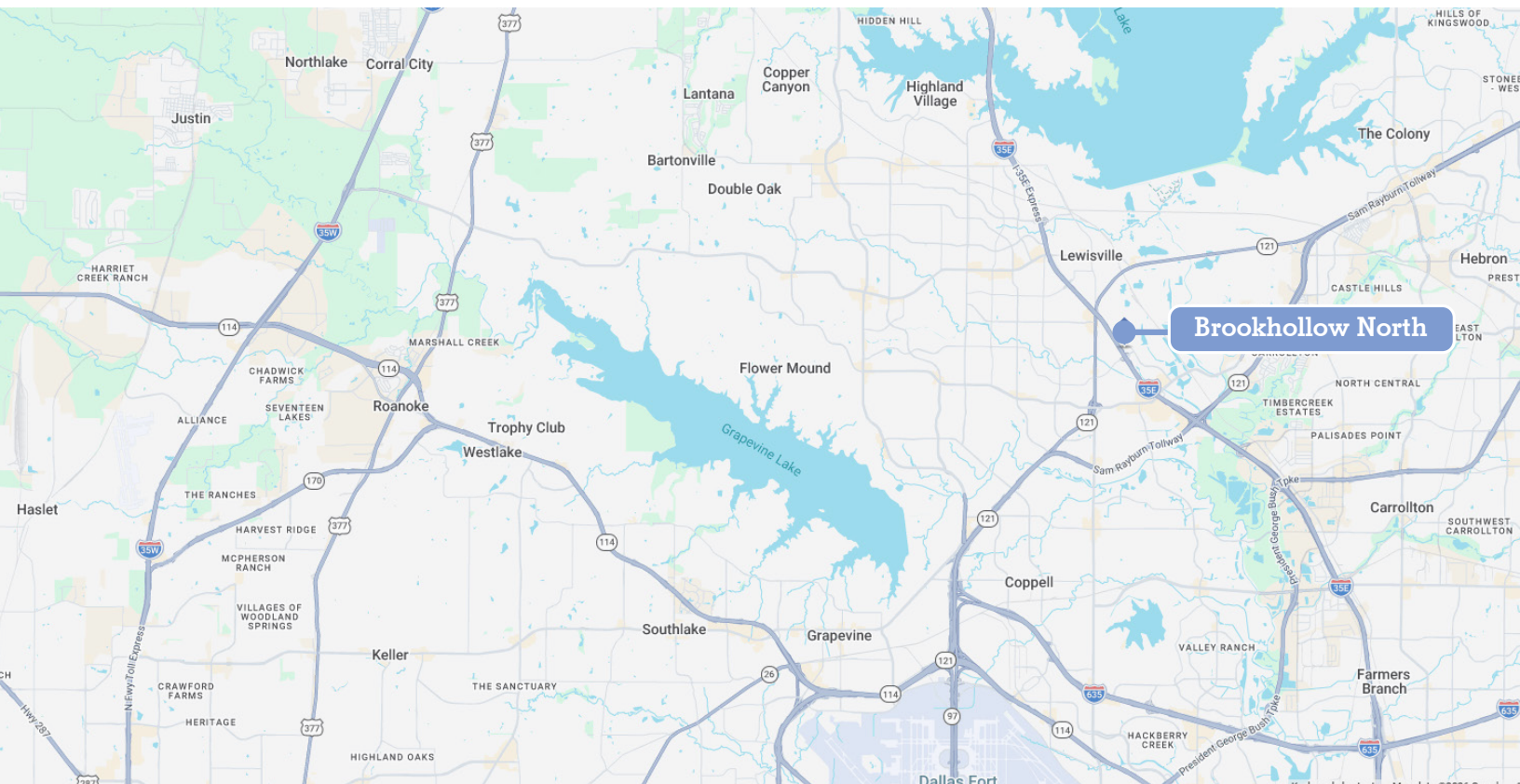




New Sublease

Brookhollow North

1760 S Stemmons Freeway, Lewisville, TX, 75067



Office space available in Lewisville submarket

Brookhollow North is located on South Stemmons Freeway, just off Interstate 35E. The property is centrally positioned within the Dallas-Fort Worth area with convenient access to DFW Airport and major thoroughfares including SH 121.

- Updated interior
- Plug & play Conference Room on 2nd floor available for all tenants
- On-site management
- 24 hour access system



Occupancy
Immediate



Term
Exp. 7/31/2029



Square footage
3,213 SF available



Move-in ready
Fully furnished



Suite layout
Reception, Conference Room, 8 private offices, Server Room, storage

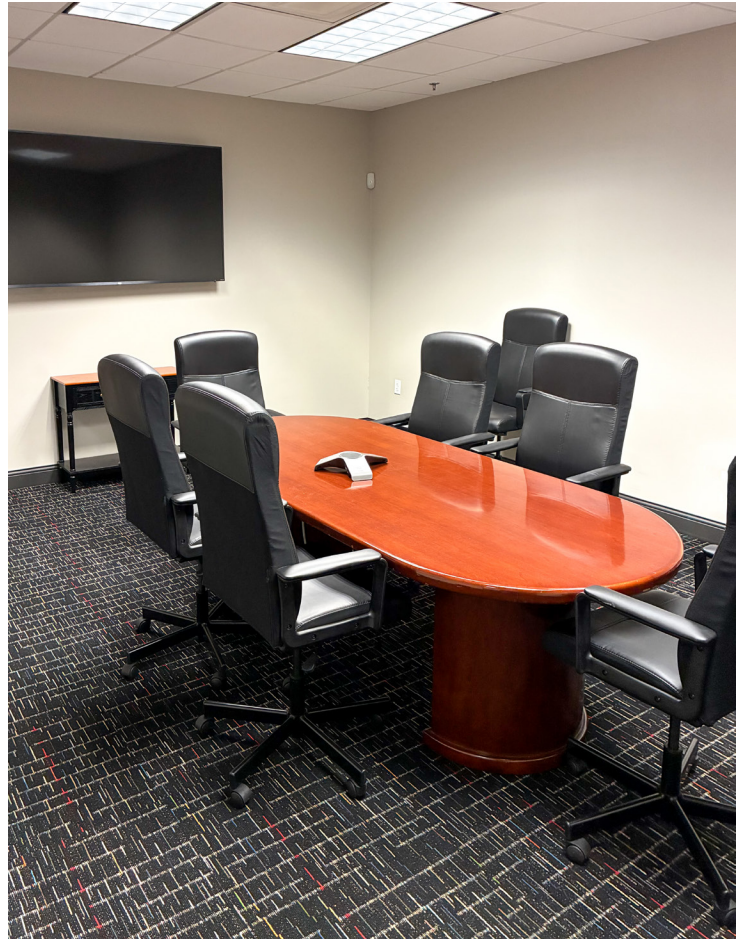
**Get more
information**

Michael Bowles
+1 214 974 9329
michael.bowles@avisonyoung.com

avisonyoung.com

Interior Gallery

1760 S Stemmons Freeway



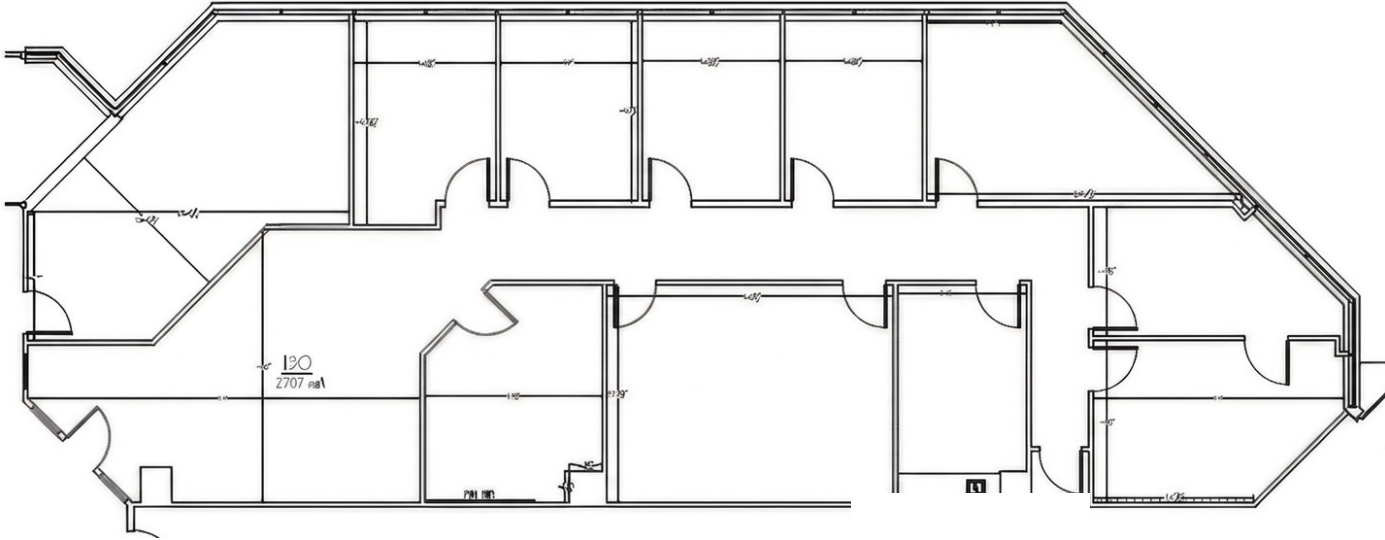
Interior Gallery

1760 S Stemmons Freeway



Floor Plan

SUITE 130
3,213 SF





**Get more
information**

Michael Bowles, Vice President
+1 214 729 8838
michael.bowles@avisonyoung.com