



SOUTH CASHUA DRIVE

±4.768 ACRES • DEVELOPMENT SITE • FOR SALE

Address: 1000 South Cashua Drive, Florence, SC

Municipality: Florence County

Lot Size: ±4.768 Acres

TMS: 90014-01-036

Frontage: ±258.63' South Cashua Drive

Utilities: Water available off South Cashua

Ingress/Egress: South Cashua Drive

Zoning: Florence County - B3

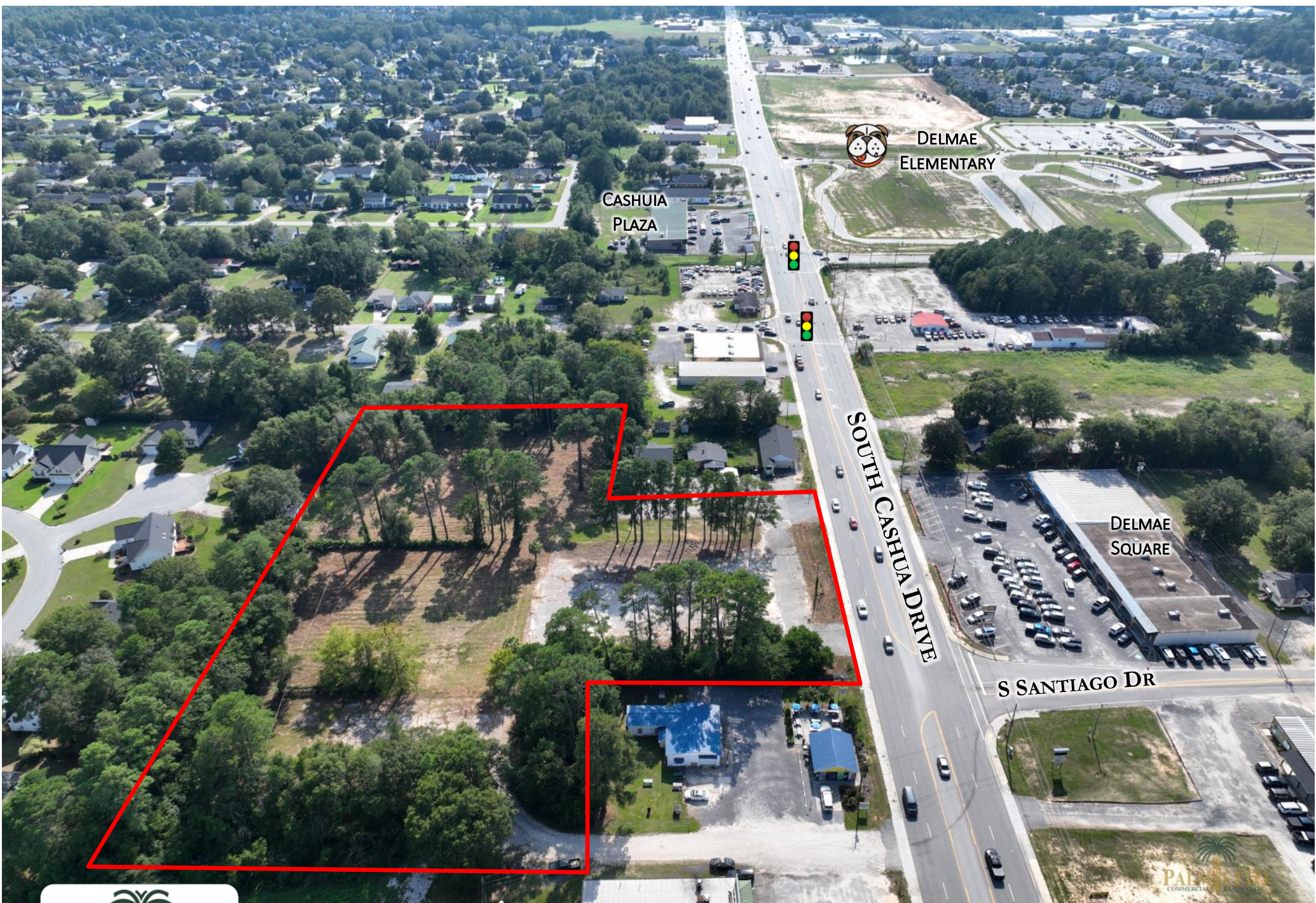
Traffic Counts: 12,900 VPD Station #: 423

Sale Price: \$1,300,000



**135 S Dargan St. Suite 301 | Florence, SC 29506 | Phone (843) 667-4999 |
Fax (843) 667-1310 | www.palmettocommercial.com**

No warranty or representation is made as to the accuracy of the information contained herein. Property lines are approximate and provided for illustration purposes only.



DELMAE
ELEMENTARY

CASHUA
PLAZA

SOUTH CASHUA DRIVE

DELMAE
SQUARE

S SANTIAGO DR



135 S Dargan St. Suite 301 | Florence, SC 29506 | Phone (843) 667-4999 |
Fax (843) 667-1310 | www.palmettocommercial.com

No warranty or representation is made as to the accuracy of the information contained herein. Property lines are approximate and provided for illustration purposes only.