

Newly Renovated Industrial - 2025

5616 S Rockwell Ave • Oklahoma City, OK 73139



Lease Rate: \$8.75 NNN • Term: 5 Year Lease

Property Highlights

- + Building Size: 11,173± SF
- + Lot Size: 4.52± Acre
- + Year Built: 1972
- + Year Renovated: 2025
- + Steel Construction
- + Large fenced yard - mostly compacted gravel
- + Zoning: I-2
- + Clear Height: 10'-16'
- + Power: 200-amp box, 240 volts, 3-Phase
- + Grade Level Doors: (5) 12'x14' (1) 10'x10' (1) 10x12'
- + Brand new security system with multiple exterior cameras
- + Parking: 17 striped concrete spaces

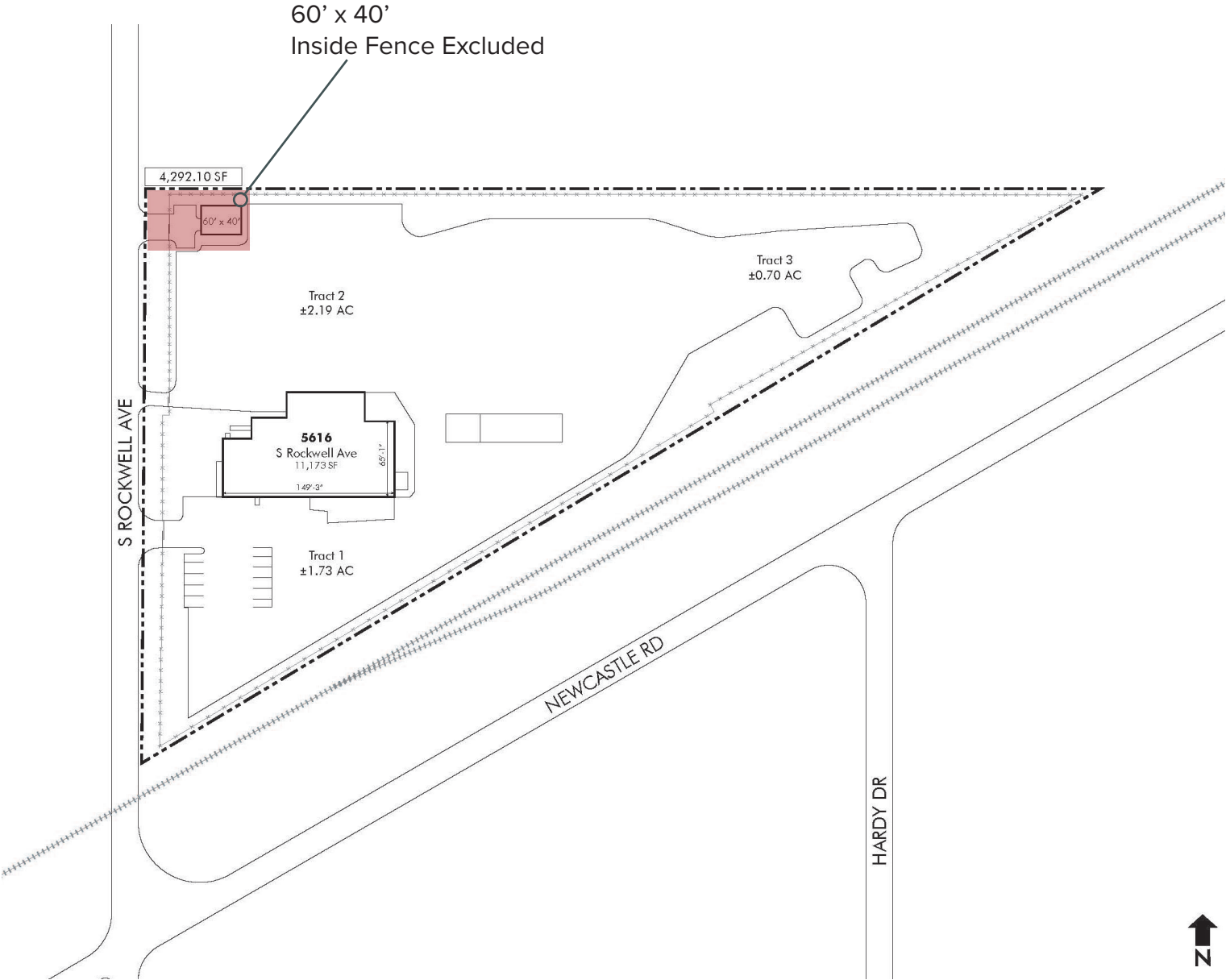
Remodeled Office Space

- + Four (4) Office Spaces
- + Break Room
- + Reception / Showroom
- + Two (2) ADA Restrooms

Photos



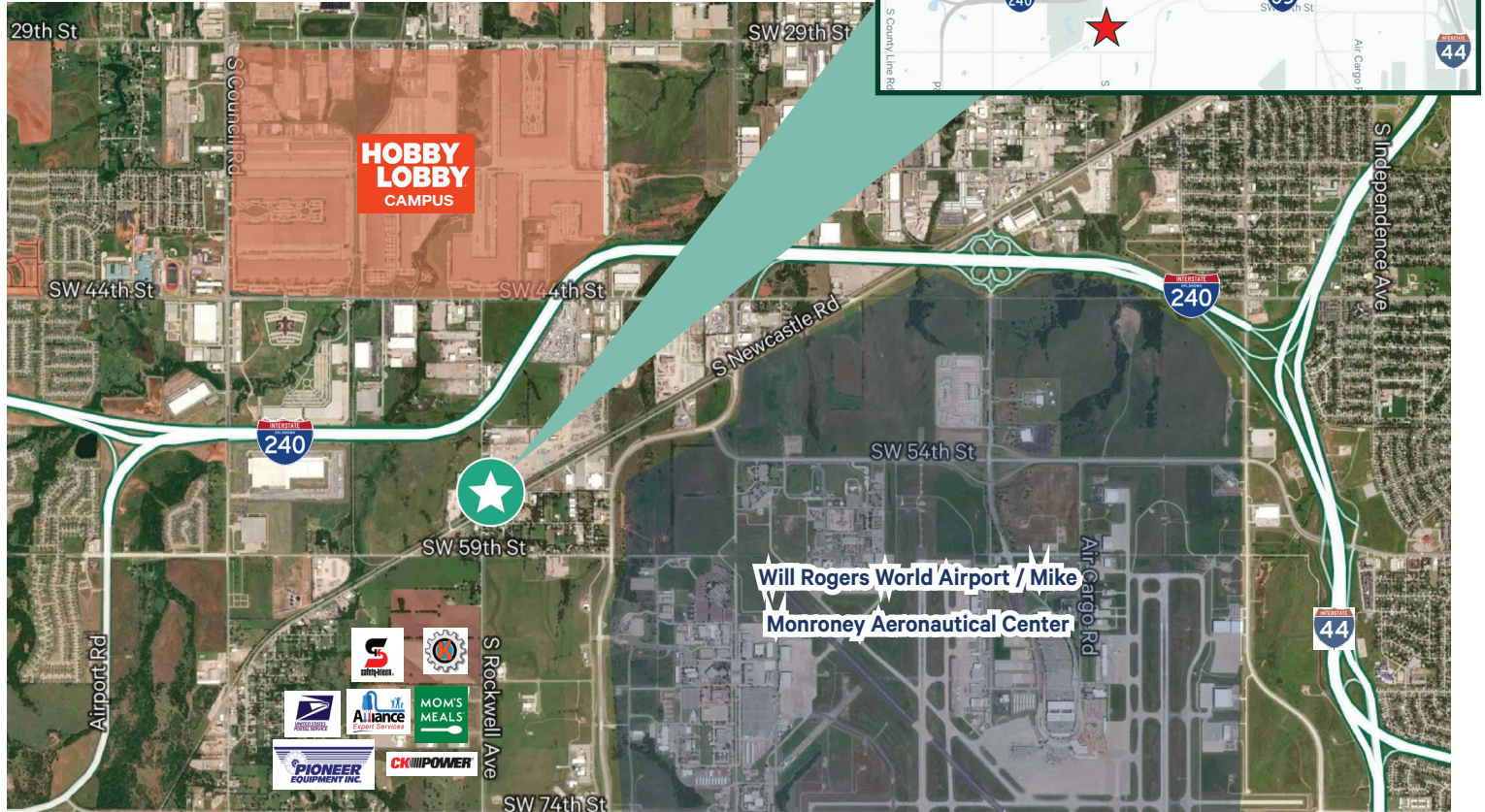
Survey



Industrial | For Lease

Location: Southwest Oklahoma City, less than a mile to Will Rogers World Airport. Quick access to Highway 152, I-40, I-240 and I-44.

Vicinity Map



Contact Us

Randy Lacey, SIOR
Senior Vice President
+1 405 607 6062
randy.lacey@cbre.com

Chris Zach, CPA
Vice President
+1 405 607 6313
chris.zach@cbre.com

© 2025 CBRE, Inc. All rights reserved. This information has been obtained from sources believed reliable, but has not been verified for accuracy or completeness. You should conduct a careful, independent investigation of the property and verify all information. Any reliance on this information is solely at your own risk. CBRE and the CBRE logo are service marks of CBRE, Inc. All other marks displayed on this document are the property of their respective owners, and the use of such logos does not imply any affiliation with or endorsement of CBRE. Photos herein are the property of their respective owners. Use of these images without the express written consent of the owner is prohibited.