

LEASE

Retail / Professional Services - Port Orange 1,240-2,480 SF

3510 S NOVA RD

Port Orange, FL 32129

PRESENTED BY:

CARL W. LENTZ IV, MBA, CCIM

O: 386.566.3726

carl.lentz@svn.com

FL #BK3068067



PROPERTY SUMMARY



OFFERING SUMMARY

LEASE RATE:	\$22.00 SF/yr (NNN)
NUMBER OF UNITS:	1
AVAILABLE SF:	1,240 - 2,480 SF
BUILDING SIZE:	35,043 SF

PROPERTY DESCRIPTION

Tuscan Village Shoppes - Port Orange, FL
Units 106-107 - 2,480 SF - May Be Split to 1,240 SF
Busy Neighborhood Center - Retail or Professional Services
Open Space With Two Restrooms, Office, 2 X Utility Closets
Recently Vacant - TI Will Be Considered
NNNs at +/- \$6.30

CARL W. LENTZ IV, MBA, CCIM

O: 386.566.3726

carl.lentz@svn.com

FL #BK3068067

RETAIL / PROFESSIONAL SERVICES - PORT ORANGE 1,240-2,480 SF | 3510 S Nova Rd Port Orange, FL 32129

We obtained the information above from sources we believe to be reliable. However, we have not verified its accuracy and make no guarantee, warranty or representation about it. It is submitted subject to the possibility of errors, omissions, change of price, rental or other conditions, prior sale, lease or financing, or withdrawal without notice. We include projections, opinions, assumptions or estimates for example only, and they may not represent current or future performance of the property. You and your tax and legal advisors should conduct your own investigation of the property and transaction. All SVN offices are independently owned and operated.



ADDITIONAL PHOTOS



CARL W. LENTZ IV, MBA, CCIM

O: 386.566.3726

carl.lentz@svn.com

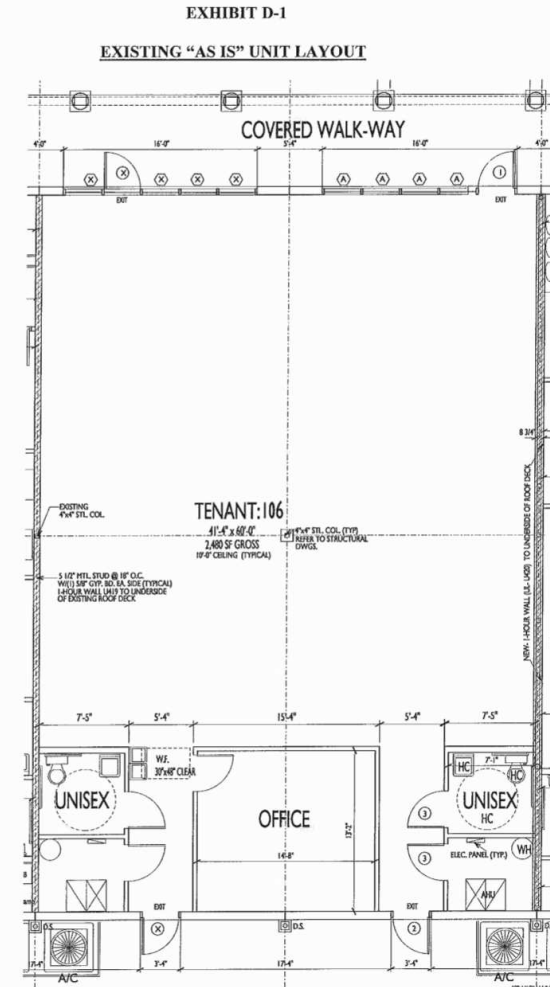
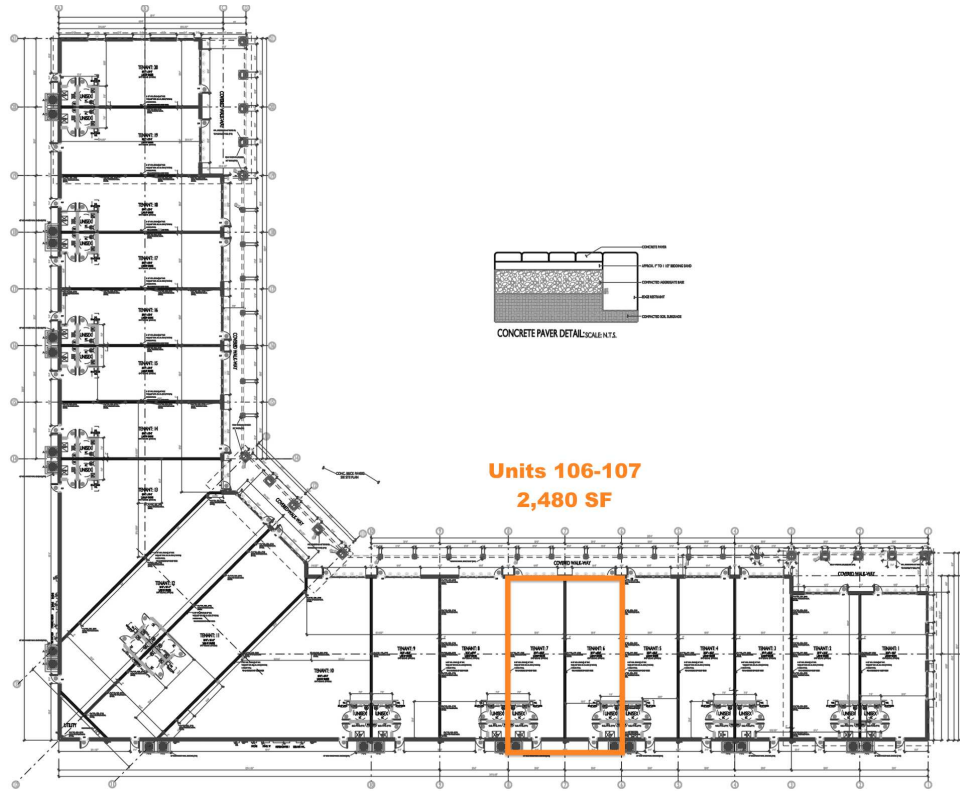
FL #BK3068067

RETAIL / PROFESSIONAL SERVICES - PORT ORANGE 1,240-2,480 SF | 3510 S Nova Rd Port Orange, FL 32129

We obtained the information above from sources we believe to be reliable. However, we have not verified its accuracy and make no guarantee, warranty or representation about it. It is submitted subject to the possibility of errors, omissions, change of price, rental or other conditions, prior sale, lease or financing, or withdrawal without notice. We include projections, opinions, assumptions or estimates for example only, and they may not represent current or future performance of the property. You and your tax and legal advisors should conduct your own investigation of the property and transaction. All SVN offices are independently owned and operated.



UNIT LOCATION AND LAYOUT



CARL W. LENTZ IV, MBA, CCIM

O: 386.566.3726

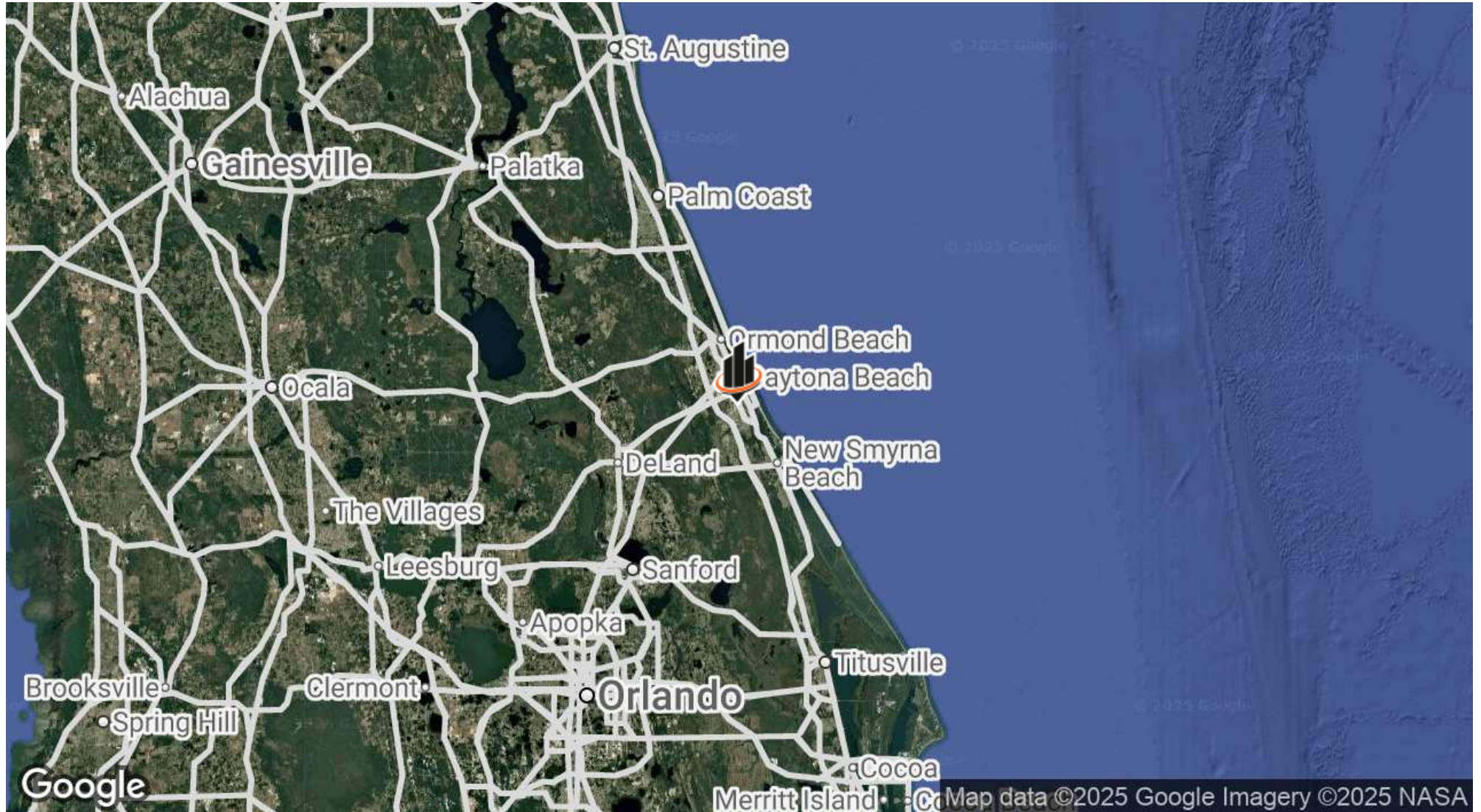
carl.lentz@svn.com

FL #BK3068067

RETAIL / PROFESSIONAL SERVICES - PORT ORANGE 1,240-2,480 SF | 3510 S Nova Rd Port Orange, FL 32129

We obtained the information above from sources we believe to be reliable. However, we have not verified its accuracy and make no guarantee, warranty or representation about it. It is submitted subject to the possibility of errors, omissions, change of price, rental or other conditions, prior sale, lease or financing, or withdrawal without notice. We include projections, opinions, assumptions or estimates for example only, and they may not represent current or future performance of the property. You and your tax and legal advisors should conduct your own investigation of the property and transaction. All SVN offices are independently owned and operated.

LOCATION MAP



CARL W. LENTZ IV, MBA, CCIM

O: 386.566.3726

carl.lentz@svn.com

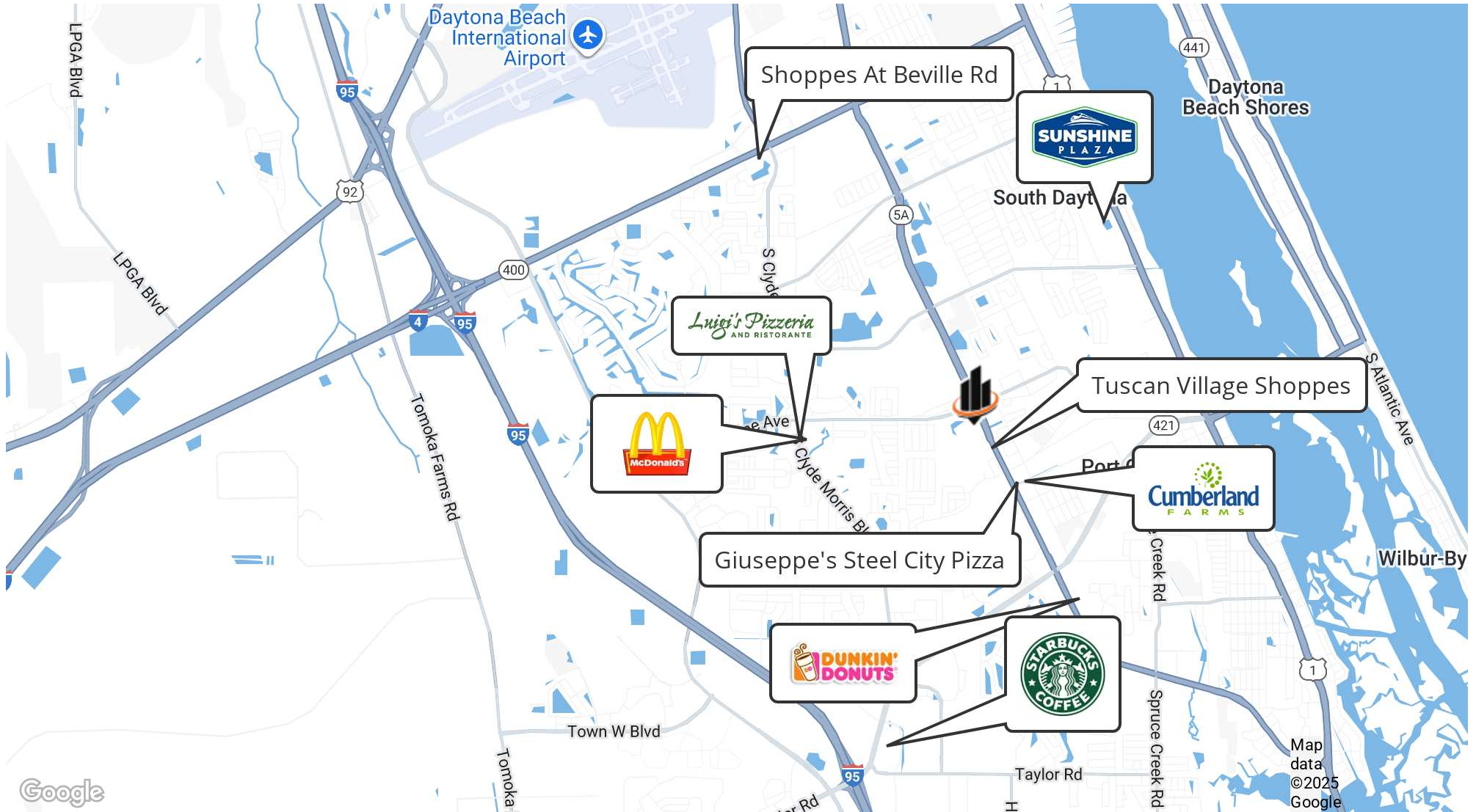
FL #BK3068067

RETAIL / PROFESSIONAL SERVICES - PORT ORANGE 1,240-2,480 SF | 3510 S Nova Rd Port Orange, FL 32129

We obtained the information above from sources we believe to be reliable. However, we have not verified its accuracy and make no guarantee, warranty or representation about it. It is submitted subject to the possibility of errors, omissions, change of price, rental or other conditions, prior sale, lease or financing, or withdrawal without notice. We include projections, opinions, assumptions or estimates for example only, and they may not represent current or future performance of the property. You and your tax and legal advisors should conduct your own investigation of the property and transaction. All SVN offices are independently owned and operated.



RETAILER MAP



CARL W. LENTZ IV, MBA, CCIM

O: 386.566.3726

carl.lentz@svn.com

FL #BK3068067

RETAIL / PROFESSIONAL SERVICES - PORT ORANGE 1,240-2,480 SF | 3510 S Nova Rd Port Orange, FL 32129

We obtained the information above from sources we believe to be reliable. However, we have not verified its accuracy and make no guarantee, warranty or representation about it. It is submitted subject to the possibility of errors, omissions, change of price, rental or other conditions, prior sale, lease or financing, or withdrawal without notice. We include projections, opinions, assumptions or estimates for example only, and they may not represent current or future performance of the property. You and your tax and legal advisors should conduct your own investigation of the property and transaction. All SVN offices are independently owned and operated.



CITY INFORMATION



CARL W. LENTZ IV, MBA, CCIM
O: 386.566.3726
carl.lentz@svn.com
FL #BK3068067

RETAIL / PROFESSIONAL SERVICES - PORT ORANGE 1,240-2,480 SF | 3510 S Nova Rd Port Orange, FL 32129

We obtained the information above from sources we believe to be reliable. However, we have not verified its accuracy and make no guarantee, warranty or representation about it. It is submitted subject to the possibility of errors, omissions, change of price, rental or other conditions, prior sale, lease or financing, or withdrawal without notice. We include projections, opinions, assumptions or estimates for example only, and they may not represent current or future performance of the property. You and your tax and legal advisors should conduct your own investigation of the property and transaction. All SVN offices are independently owned and operated.

LOCATION DESCRIPTION

Located on Nova Road in Port Orange, Directly North of the Nova and Dunlawton Intersection.

LOCATION DETAILS

MARKET	Daytona Beach
SUB MARKET	Port Orange
COUNTY	Volusia
STREET PARKING	No
SIGNAL INTERSECTION	No
ROAD TYPE	Paved
MARKET TYPE	Medium
NEAREST HIGHWAY	I-95 & I-4
NEAREST AIRPORT	Daytona Beach International

