

Retail Center ★ LEASE

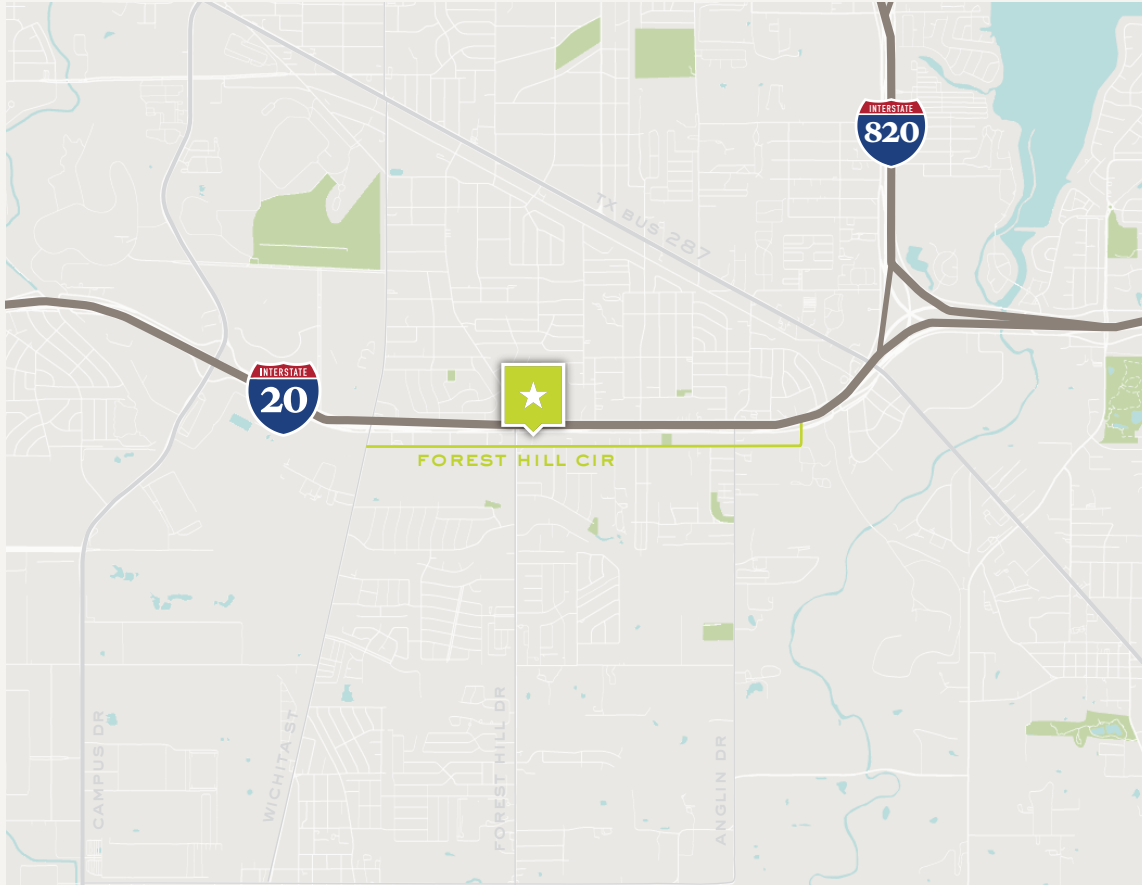
3501 FOREST HILL CIR FOREST HILL, TX 76140



Retail Center ★ LEASE

3501 FOREST HILL CIR

LanCarte.com



PROPERTY FEATURES

- Divisible up to 5,482 SF
- 14,500 SF Building
- Built in 2023
- Monument signage
- Prime retail opportunity with direct I-20 frontage in moderate-growth corridor of southeast Fort Worth
- Exceptional visibility from major thoroughfares

LOCATION OVERVIEW

This retail center benefits from a strategic location capturing daily traffic flowing between Fort Worth and surrounding suburbs. Situated in Forest Hill, the property serves as a central hub for nearby communities including Arlington, Mansfield, and Kennedale. With convenient access to major commuter routes such as Interstate 20 and Loop 820, the site offers excellent connectivity across the southwest DFW Metroplex. Surrounded by dense residential neighborhoods and steady commuter traffic, this location provides strong visibility and consistent consumer flow for a variety of retail users.

LEASE STRUCTURE

\$30/SF + \$8.00 NNN



Retail Center ★ LEASE

3501 FOREST HILL CIR

LanCarte.com



DEMOGRAPHICS

POPULATION

1 MILE	3 MILES	5 MILES
12K	68K	204K

AVERAGE HH INCOME

1 MILE	3 MILES	5 MILES
\$77K	\$76K	\$84K

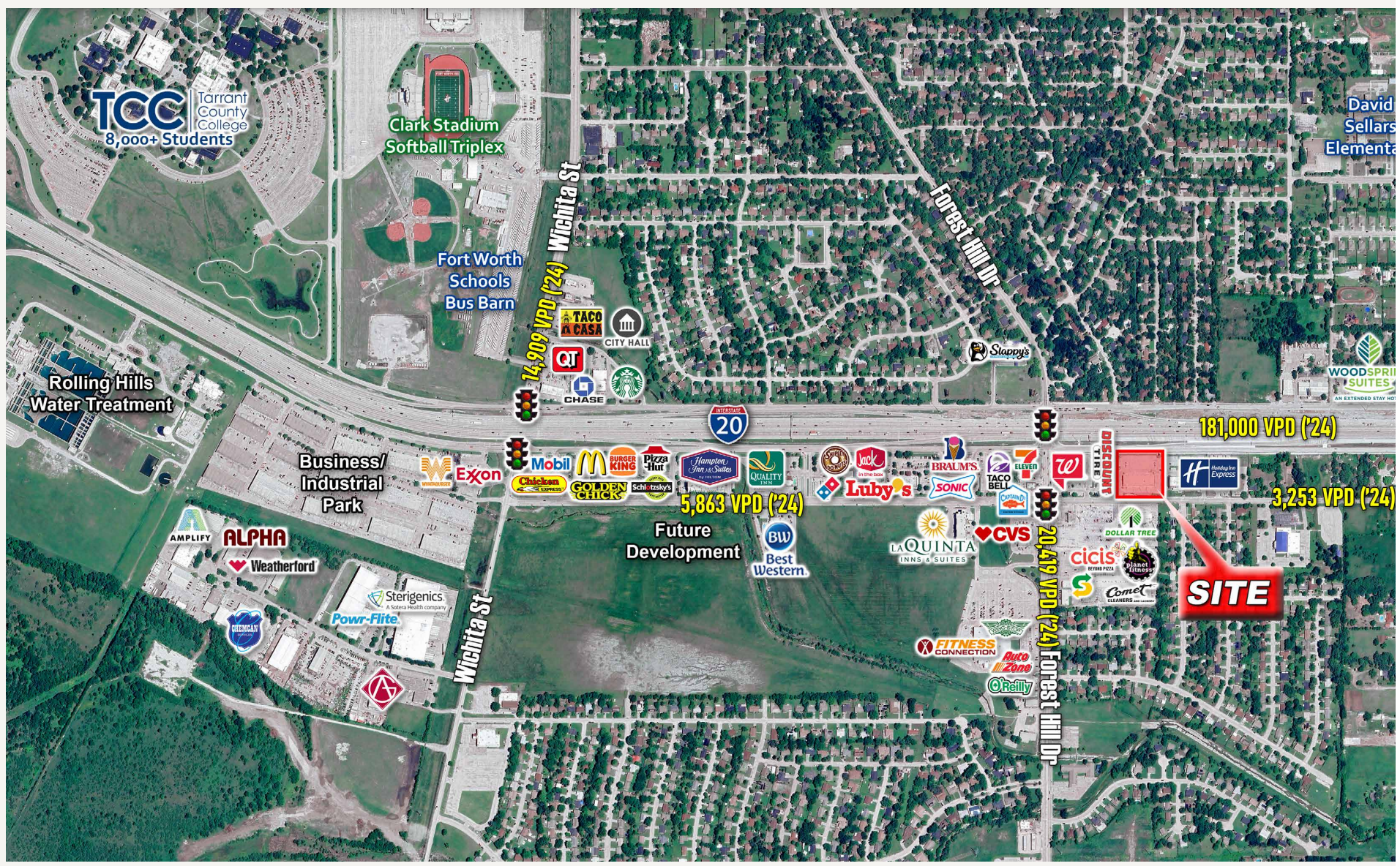
HOUSEHOLDS

1 MILE	3 MILES	5 MILES
4K	21K	208K

Retail Center ★ LEASE

3501 FOREST HILL CIR

LanCarte.com



Retail Center ★ LEASE

3501 FOREST HILL CIR

LanCarte.com





LANCARTE COMMERCIAL

BROKERAGE ★ PROPERTY MANAGEMENT

Relentlessly Pursuing What Matters

Sarah LanCarte CCIM, SIOR
817-228-4247
sarah@lancarte.com

Brittany Doyle, CCIM
806-206-0290
bdoyle@lancarte.com

The information provided herein was obtained from sources believed to be reliable. However, LanCarte Commercial makes no guaranties, warranties or representations as to the completeness or accuracy thereof. The presentation of this property is submitted subject to errors, omissions, change of price or conditions, prior to sale or lease, or withdrawal without notice. Copyright 2026 LanCarte Commercial Real Estate, LLC.