



**4.78 Acres
Available**

SHAWNEE PROPERTY

5113 N Harrison Street

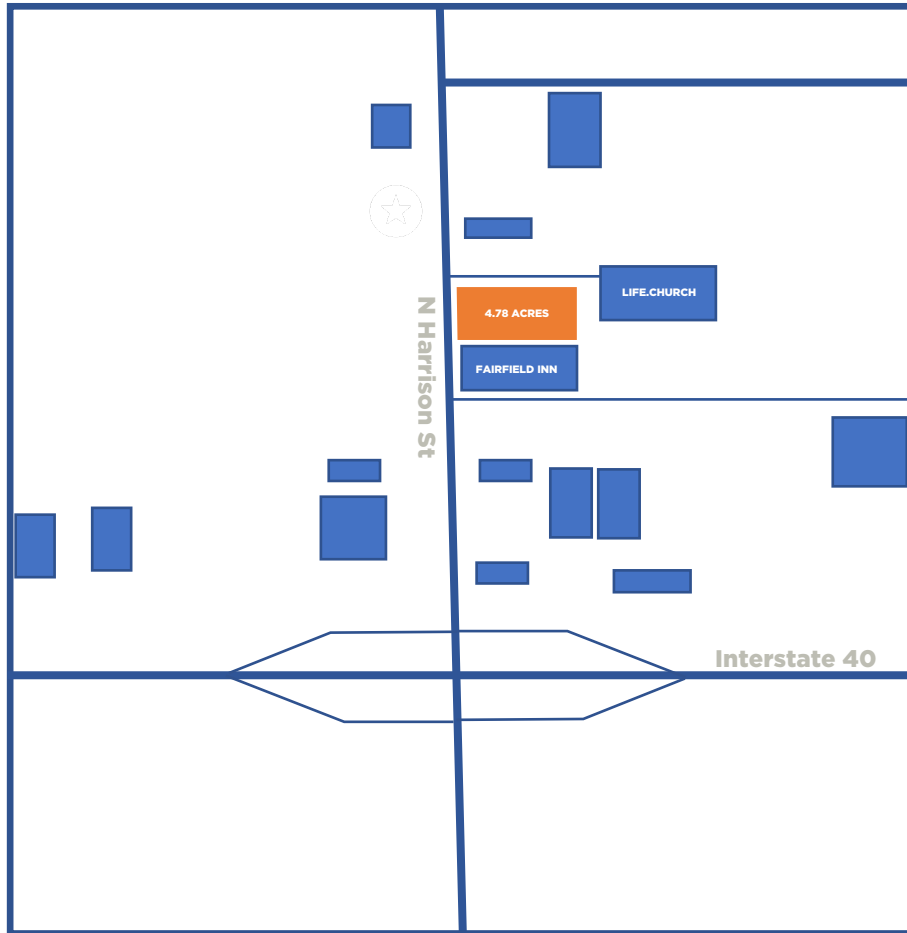
Land For Sale

Asking Price: \$783,484.80

4.78 Acre Development Parcel

Shawnee, Oklahoma

Site Overview



Located near the corner Interstate 40 and N Harrison Street in Shawnee, Oklahoma. C-3 Highway Commercial District. The property is in an area surrounded by several other hotels and Interstate rest stops. A wide variety of uses allowed on the site including, retail, light industrial or hospitality are desired and will compliment the surrounding neighbors.

4.78 Acres

Commercial | Retail | Hospitality
C-3 Highway Commercial District
Harrison Street and Interstate 40
Asking Price: \$783,484.80

Site Aerials



Demographics

Area Profile



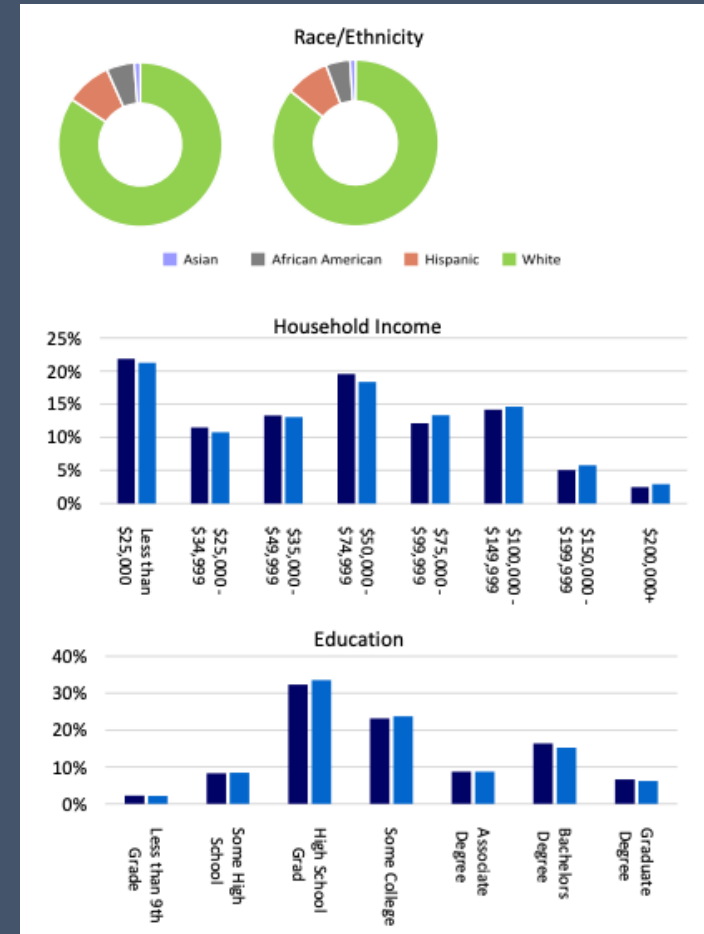
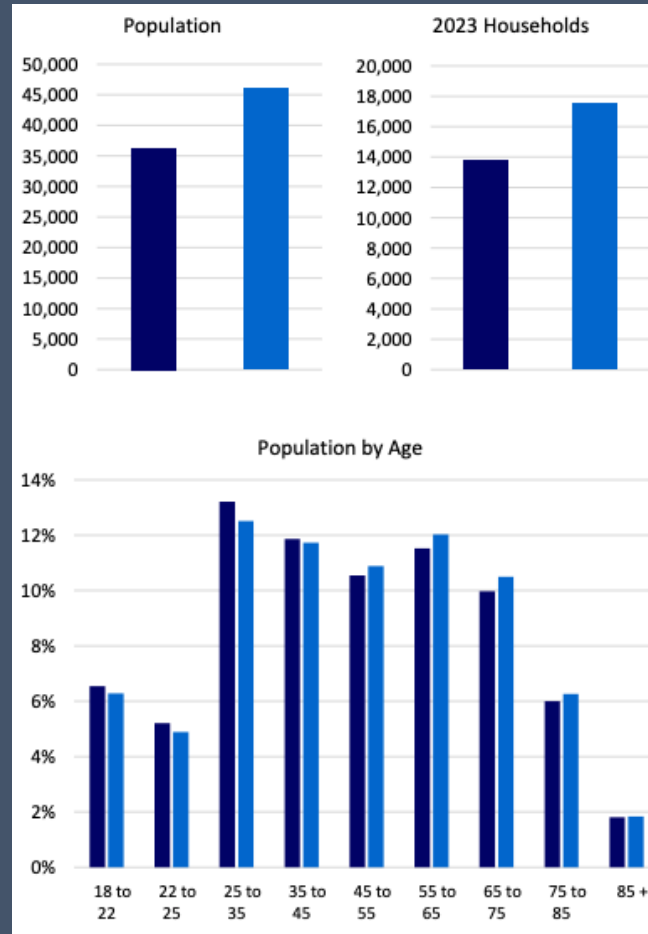
Population
36,277



Average Household Income
\$70,738



Average Age
38.9



Legend

- 5 Mile Radius
- 20 Minute Drive Time



**4.78 Acres
Available**

SHAWNEE PROPERTY

Looking for more info?

To request additional information on this property, or to submit an offer, [click here](#).