



Keegan & Coppin
COMPANY, INC.

FOR LEASE

5959 COMMERCE BLVD.
ROHNERT PARK, CA

RETAIL/OFFICE AVAILABLE



Go beyond broker.

PRESENTED BY:

ERLINA D'ARGENZIO
SENIOR RE ADVISOR
LIC # 01985519 (707) 528-1400, EXT. 241
ERLINA.OTHMAN@KEEGANCOPPIN.COM



PROPERTY DETAILS



5959 COMMERCE BLVD.
ROHNERT PARK, CA

**RETAIL/OFFICE
FOR LEASE**

PROPERTY INFORMATION

HIGHLIGHTS

- 5959 Commerce Blvd.
Unit 13: 1,100+/- sft
Unit 17/18: 1,011+/- sft
- Multi- Tenant Strip Center
- On-site parking
- Flexible zoning
- Built out for business offices/ personal services
- Onsite parking

DESCRIPTION OF PREMISES

Located in the community of Rohnert Park and near the retail hub, this multi-tenant strip center consists of two buildings totaling approximately 17,000 sft of mixed retail and office tenancies. The mix of restaurants and various services makes for a thriving community. The vacant suite is approximately 1,080 ft and consists of a reception area, four private offices/rooms, one bathroom and laundry hookups. The flexible zoning allows for a wide variety of uses to include but not limiting to, Personnel services, business offices, household services/contractors light manufacturing etc. see link provided for full list per City of Rohnert Park.

LEASE TERMS

Rate

\$2.50 psft/mo/mod gross plus utilities

Terms

3 year lease term



PRESENTED BY:

ERLINA D'ARGENZIO, SENIOR RE ADVISOR
KEEGAN & COPPIN CO., INC.
LIC # 01985519 (707) 528-1400, EXT. 241
ERLINA.OTHMAN@KEEGANCOPPIN.COM



AREA DESCRIPTION



5959 COMMERCE BLVD.
ROHNERT PARK, CA

**RETAIL/OFFICE
FOR LEASE**

DESCRIPTION OF AREA

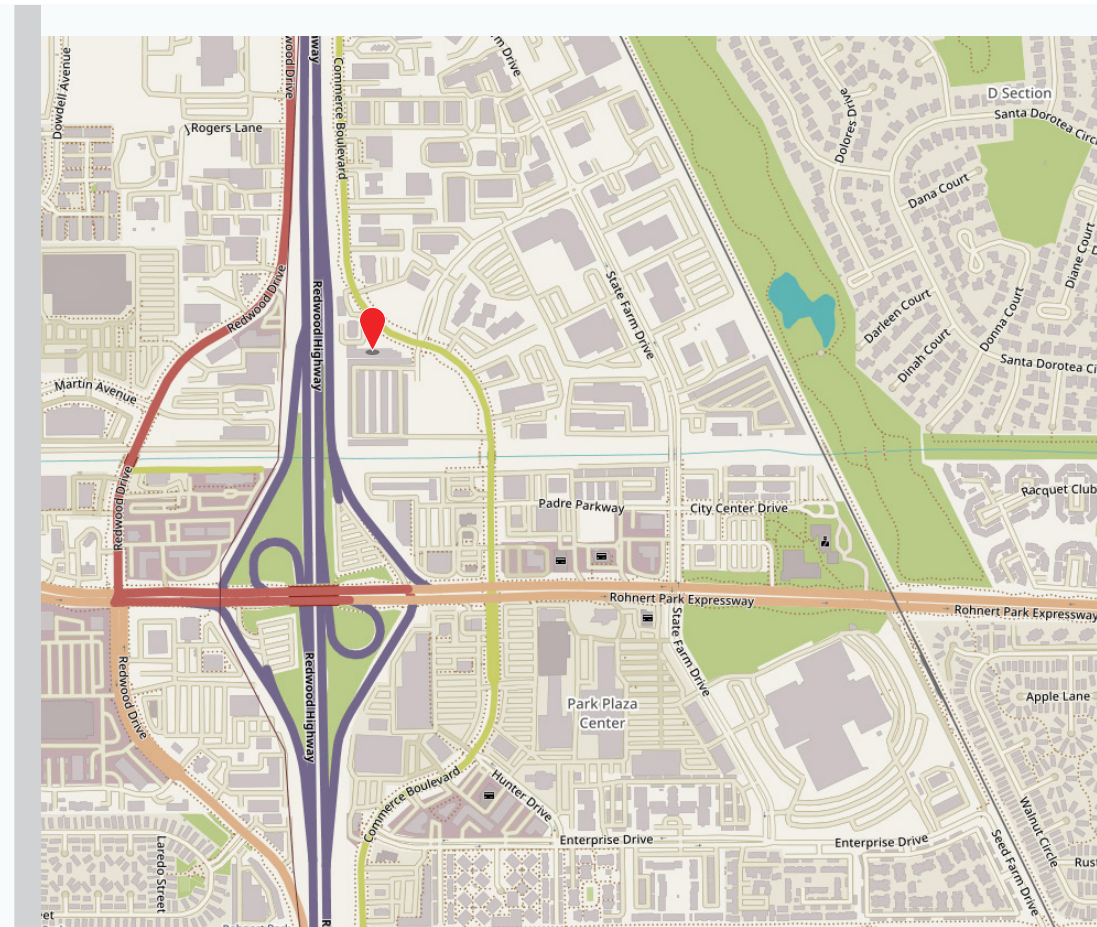
The property is located along Commerce Blvd. facing Highway 101 with immediate access to the on ramp. Located in the community of Rohnert Park in the San Francisco Bay Area. Less than 1 mile from Sonoma State University, Rancho Cotati High School and the new Cotati SMART Train Station. The property has ample on-site parking and is located off Snyder Lane at the corner of East Cotati and Maurice Avenue.

NEARBY AMENITIES

- Restaurants
- Convenience Stores
- Gas Stations
- Parks

TRANSPORTATION ACCESS

- Highway 101 via Old Redwood Hwy & E Cotati Ave
- Cotati SMART Train Station (0.5 Miles)
- Bus Stops along E Cotati Ave.



PRESENTED BY:

ERLINA D'ARGENZIO, SENIOR RE ADVISOR
KEEGAN & COPPIN CO., INC.
LIC # 01985519 (707) 528-1400, EXT. 241
ERLINA.OTHMAN@KEEGANCOPPIN.COM

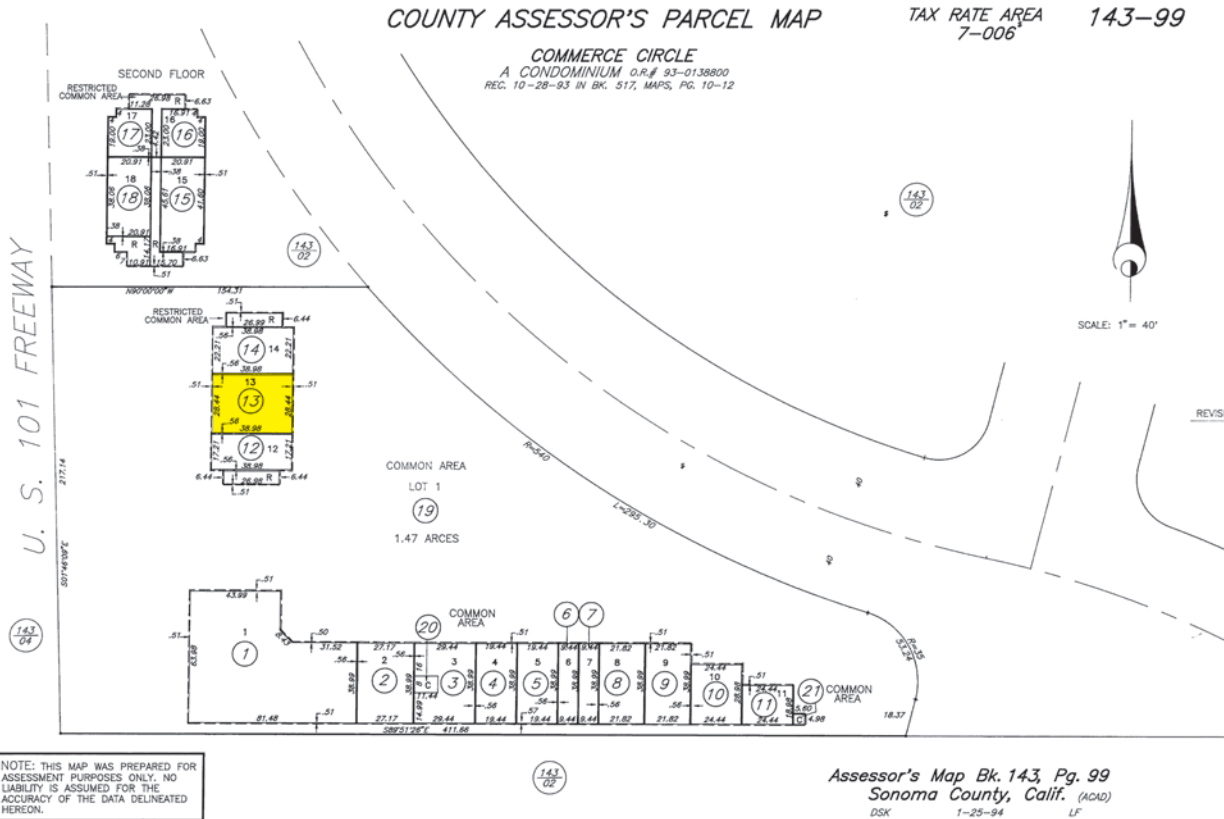


PROPERTY DESCRIPTION



5959 COMMERCE BLVD.
ROHNERT PARK, CA

**RETAIL/OFFICE
FOR LEASE**



BUILDING SIZE
17,000+/- SF

APN
5959: 143-990-013

RENTABLE SPACE
Unit 13: 1,100+/- sft (per public record)
Unit 17/18: 1,011+/- sft (per public record)

ZONING
I-L/ O
Limited Industrial with The Office Overlay

PARKING
On-site

PRESENTED BY: ERLINA D'ARGENZIO, SENIOR RE ADVISOR
KEEGAN & COPPIN CO., INC.
LIC # 01985519 (707) 528-1400, EXT. 241
ERLINA.OTHMAN@KEEGANCOPPIN.COM



PROPERTY PHOTOS



5959 COMMERCE BLVD.
ROHNERT PARK, CA

**RETAIL/OFFICE
FOR LEASE**



PRESENTED BY:

ERLINA D'ARGENZIO, SENIOR RE ADVISOR
KEEGAN & COPPIN CO., INC.
LIC # 01985519 (707) 528-1400, EXT. 241
ERLINA.OTHMAN@KEEGANCOPPIN.COM



AERIAL PHOTO



5959 COMMERCE BLVD.
ROHNERT PARK, CA

RETAIL/OFFICE
FOR LEASE



PRESENTED BY:

ERLINA D'ARGENZIO, SENIOR RE ADVISOR
KEEGAN & COPPIN CO., INC.
LIC # 01985519 (707) 528-1400, EXT. 241
ERLINA.OTHMAN@KEEGANCOPPIN.COM



LOCATION MAP



5959 COMMERCE BLVD.
ROHNERT PARK, CA

RETAIL/OFFICE
FOR LEASE



PRESENTED BY:

ERLINA D'ARGENZIO, SENIOR RE ADVISOR
KEEGAN & COPPIN CO., INC.
LIC # 01985519 (707) 528-1400, EXT. 241
ERLINA.OTHMAN@KEEGANCOPPIN.COM

The above information, while not guaranteed, has been secured from sources we believe to be reliable. Submitted subject to error, change or withdrawal. An interested party should verify the status of the property and the information herein.