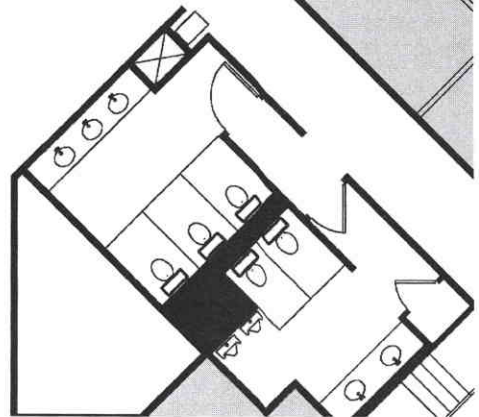
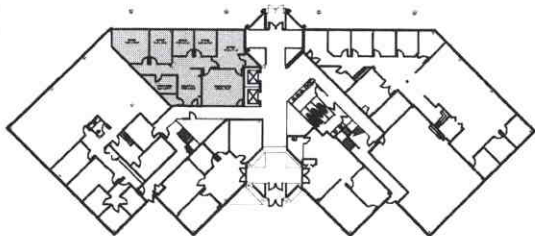


**SUITE 113 - 1,771 RSF**

NOT FOR CONSTRUCTION



**KEY PLAN**



**PLAN LEGEND:**

- EXISTING
- - - - - DEMOLITION
- /////// NEW CONSTRUCTION

**GENERAL NOTE:**

**SUITE 113 - 1,771 RSF**

NOTE: ALL ROOM DIMENSIONS ARE APPROXIMATE AND SHOULD BE FIELD VERIFIED FOR COMPLETE ACCURACY.

**NOT FOR CONSTRUCTION**

SEVEN NESHAMINY INTERPLEX  
FIRST FLOOR - SUITE 113  
TREVOSÉ, PA 19053



**KORMAN** COMMERCIAL PROPERTIES

EIGHT NESHAMINY INTERPLEX  
SUITE 400, TREVOSÉ, PA 19053  
PHONE: 215-244-5175 FAX: 215-245-6243

BUILDING 7  
SUITE 113