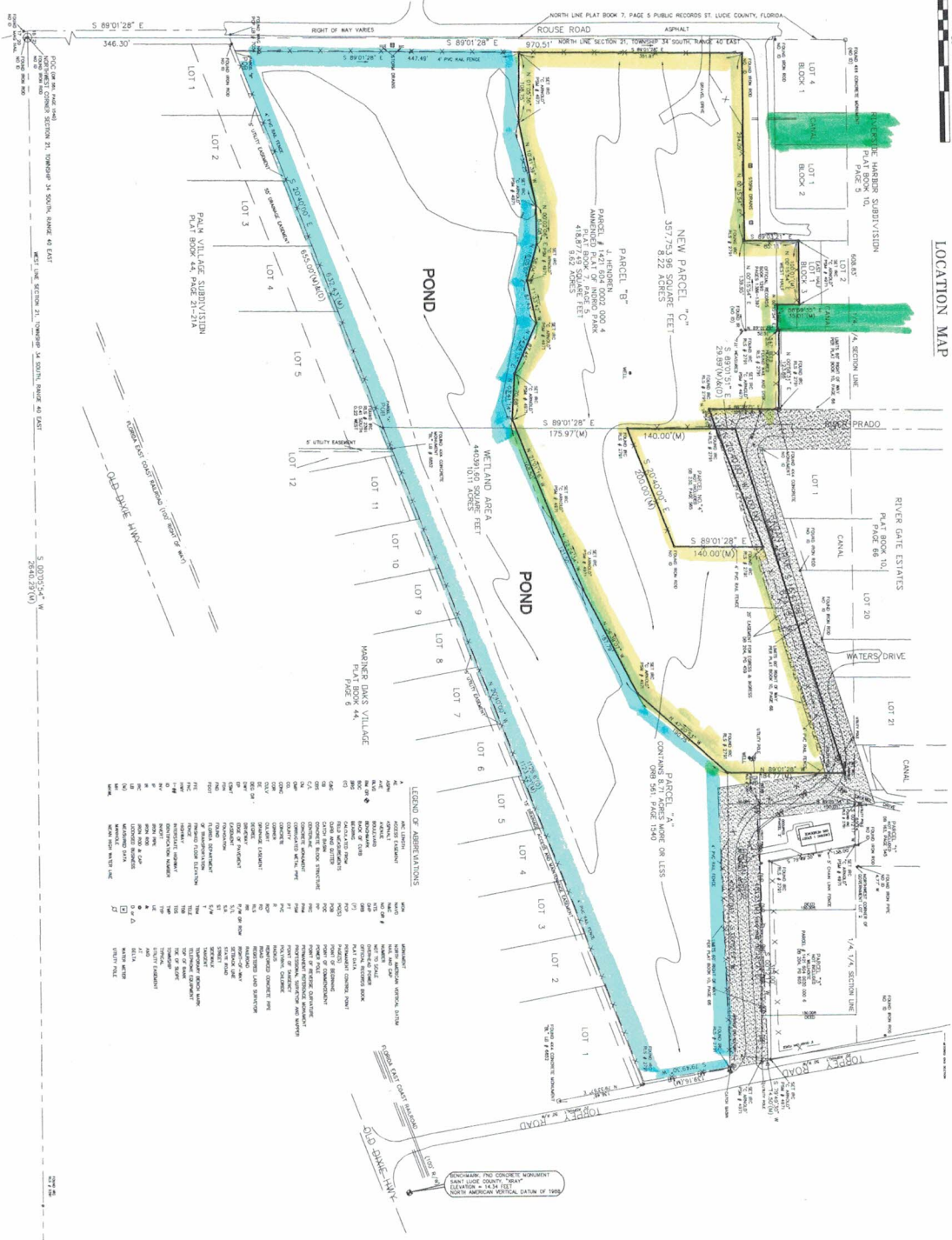
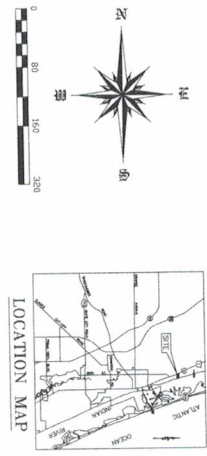


BOUNDARY SURVEY

BEING A PORTION OF THE NORTHWEST 1/4 OF SECTION 21, TOWNSHIP 34 SOUTH, RANGE 40 EAST
 SAINT LUCIE VILLAGE, SAINT LUCIE COUNTY, FLORIDA



LEGEND OF ABBREVIATIONS

SYMBOL	DESCRIPTION
—	BOUNDARY LINE
—	ADJACENT PROPERTY
—	ADJACENT ROAD
—	ADJACENT CANAL
—	ADJACENT WETLAND
—	ADJACENT WOODS
—	ADJACENT OPEN SPACE
—	ADJACENT FARM
—	ADJACENT INDUSTRIAL
—	ADJACENT RESIDENTIAL
—	ADJACENT COMMERCIAL
—	ADJACENT PUBLIC
—	ADJACENT UNDEVELOPED
—	ADJACENT WETLAND
—	ADJACENT WOODS
—	ADJACENT OPEN SPACE
—	ADJACENT FARM
—	ADJACENT INDUSTRIAL
—	ADJACENT RESIDENTIAL
—	ADJACENT COMMERCIAL
—	ADJACENT PUBLIC
—	ADJACENT UNDEVELOPED

GENERAL NOTES

1. THE BOUNDARY SURVEY HAS BEEN MADE IN ACCORDANCE WITH THE FLORIDA SURVEYING AND MAPPING ACT, CHAPTER 461, F.S.
2. ALL ADJACENT PROPERTY OWNERS HAVE BEEN NOTIFIED AND HAVE BEEN GIVEN AN OPPORTUNITY TO OBJECT TO THE SURVEY.
3. THE SURVEY HAS BEEN MADE BY MEANS OF THE STATION METHOD.
4. THE SURVEY HAS BEEN MADE BY MEANS OF THE STATION METHOD.
5. THE SURVEY HAS BEEN MADE BY MEANS OF THE STATION METHOD.
6. THE SURVEY HAS BEEN MADE BY MEANS OF THE STATION METHOD.
7. THE SURVEY HAS BEEN MADE BY MEANS OF THE STATION METHOD.
8. THE SURVEY HAS BEEN MADE BY MEANS OF THE STATION METHOD.
9. THE SURVEY HAS BEEN MADE BY MEANS OF THE STATION METHOD.
10. THE SURVEY HAS BEEN MADE BY MEANS OF THE STATION METHOD.

CERTIFICATIONS GARRY P. FOX AND CATHERINE L. FOX FIRST AMERICAN TITLE INSURANCE COMPANY		DATE: 8/29/12 BY: CA
SAINT LUCIE VILLAGE FLORIDA		REVISIONS:
DRAWN BY: CA		DATE:
CHECKED BY: CA		REVISIONS:
DATE: APRIL 29, 2012		REVISIONS:
LEGAL SCALE: 1"=50'		REVISIONS:
PRINTED:		REVISIONS:
SHEET 1 OF 1		REVISIONS:
PROJECT NO. 12-09		REVISIONS:

CHARLES ARNOLD
 PROFESSIONAL SURVEYOR & MAPPER
 FLORIDA LICENSE NUMBER 4971
 4868 N. KINGS HWY #425, FORT PIERCE, FLORIDA 34881
 24 WINDY VISTA, FORT PIERCE, FLORIDA 34881
 OFFICE (772) 460-8211 FAX (772) 460-8210