

Foundry31

3100 San Pablo Ave
Berkeley, CA

For Lease

Contemporary
Life Science Space

o|x|f|o|r|i|d

NEWMARK



Located on the vibrant Emeryville Greenway, Foundry31 is in the heart of the East Bay innovation cluster. Once an industrial building, this converted Life Sciences building now offers state-of-the-art biotech lab space ready for your creativity.

Foundry31

3100 San Pablo Ave, Berkeley, CA

High quality amenities and transportation options make the site a top choice for talent:

Highlights

- Efficient and flexible large floor plate
- Excellent natural light
- 1:650 SF parking ratio
- Close to well-loved eateries and amenities
- Secure bike parking and bike share program
- Nearby Emery-Go-Round shuttle stop
- Immediate freeway access
- Fitness facility on-site



Laboratory ready space

Foundry31

3100 San Pablo Ave, Berkeley, CA

Structure

- 1st floor – 17'6" floor to floor
- 2nd Floor – 12'2" floor to floor
- Centralized loading dock with 2 bays and trash compactor
- New 5,000 lb capacity freight elevator
- Minimum demise is 20,000 SF
- 100 lbs/sf floor load

Electrical

- 15 watts/sf for lab areas
- 5 watts/sf of emergency backup power for lab areas

Plumbing

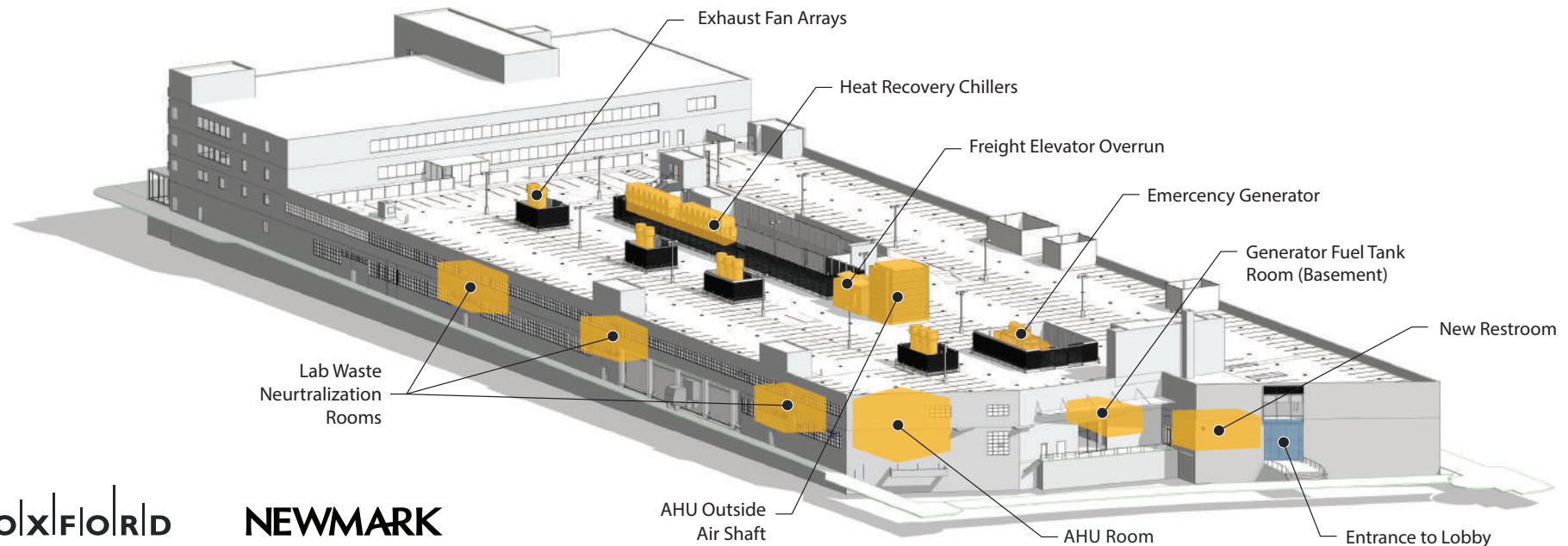
- Lab waste and vent systems capped in each tenant area
- Non-potable water and tepid water loop distribution
- PH Neutralization system and piping stubbed to Tenant's space

Mechanical

- 100% outside air HVAC system for lab areas
- 2 CFM/SF for lab areas
- New HVAC system, heat recovery heaters/chillers



Suite 120 - Open office visualization



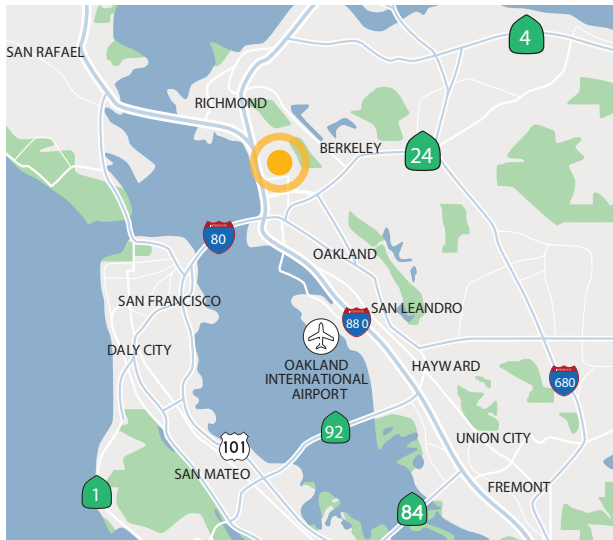
OLX|FLO|R|D

NEWMARK

In the heart of the East Bay Innovation Cluster

Drive times from Foundry31

- 7 minutes** → Downtown Berkeley
- 9 minutes** → UC Berkeley
- 13 minutes** → Downtown Oakland
- 17 minutes** → Downtown San Francisco
- 19 minutes** → Oakland International Airport
- 28 minutes** → San Francisco International Airport



- Life Science Companies
- Restaurants/Cafés



OLX|FLO|R|D

NEWMARK

Availabilities

- Spec Suites / Life Science Warm Shell
- R&D / Flex
- Office
- Future Growth Availability



Foundry31
3100 San Pablo Ave, Berkeley, CA

Spec Suites / Life Science Warm Shell: ±39,236 SF

Office: Available 2/1/2027 ±50,805 SF

R&D / Flex: Available 8/1/2026 ±59,144 SF

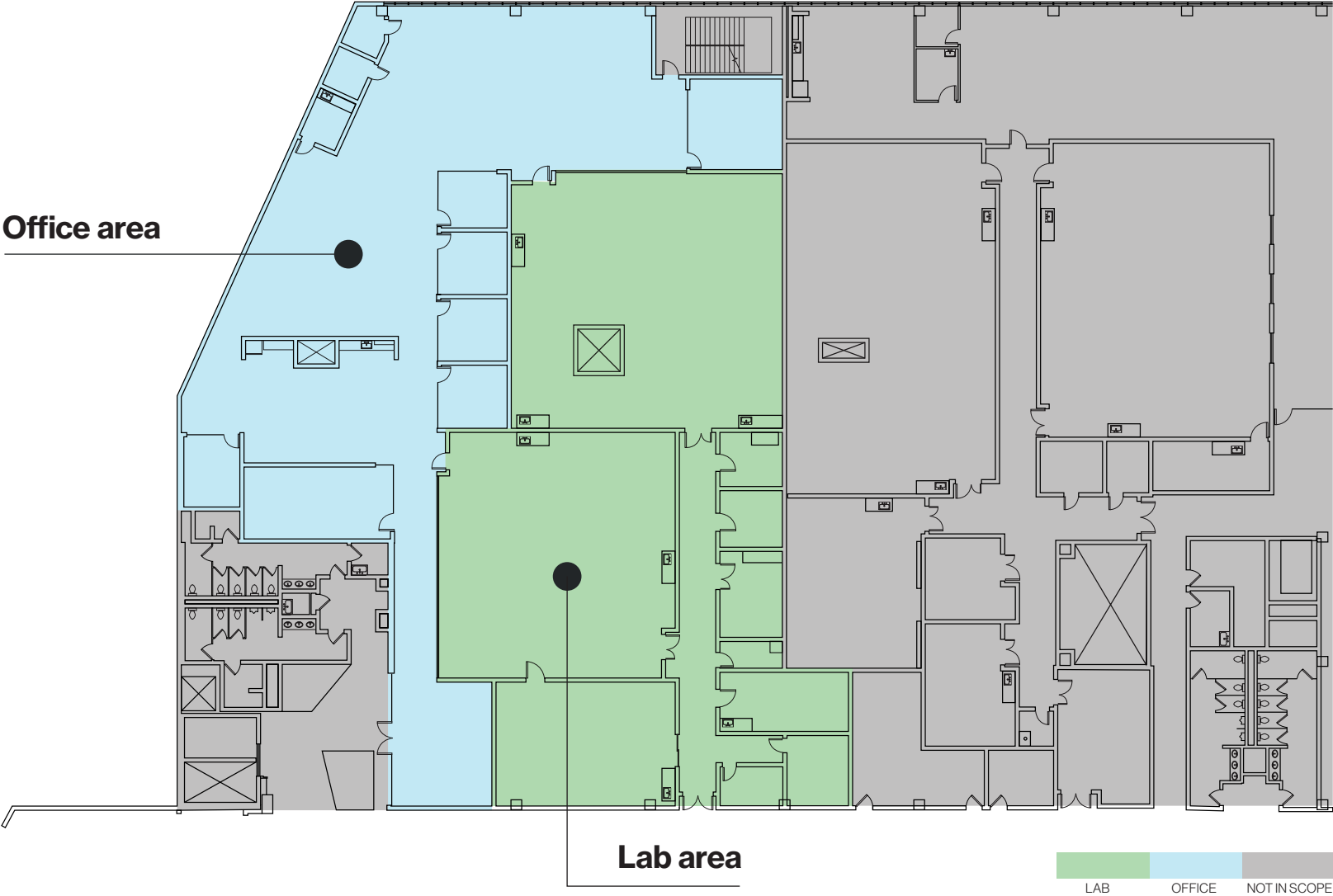
Suite 200A: Spec Labs

Second floor

±18,206 SF

Foundry31

3100 San Pablo Ave, Berkeley, CA



Suite 200B & C: Spec Labs

Foundry31

3100 San Pablo Ave, Berkeley, CA

Second floor

SUITE B: ±11,972 SF

SUITE C: ±9,432 SF





Foundry31

3100 San Pablo Ave, Berkeley, CA



Suite 200 - Lab Visualization



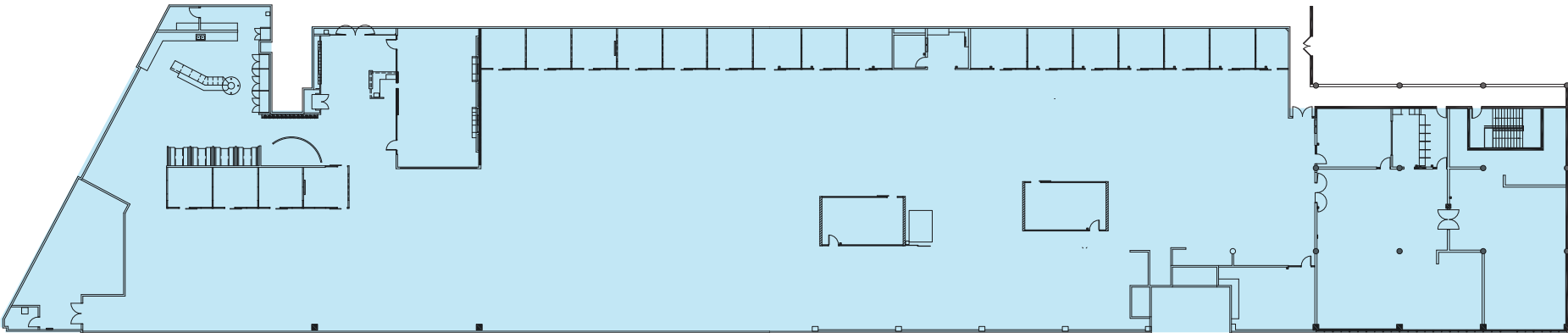
Suite 210: Office Space

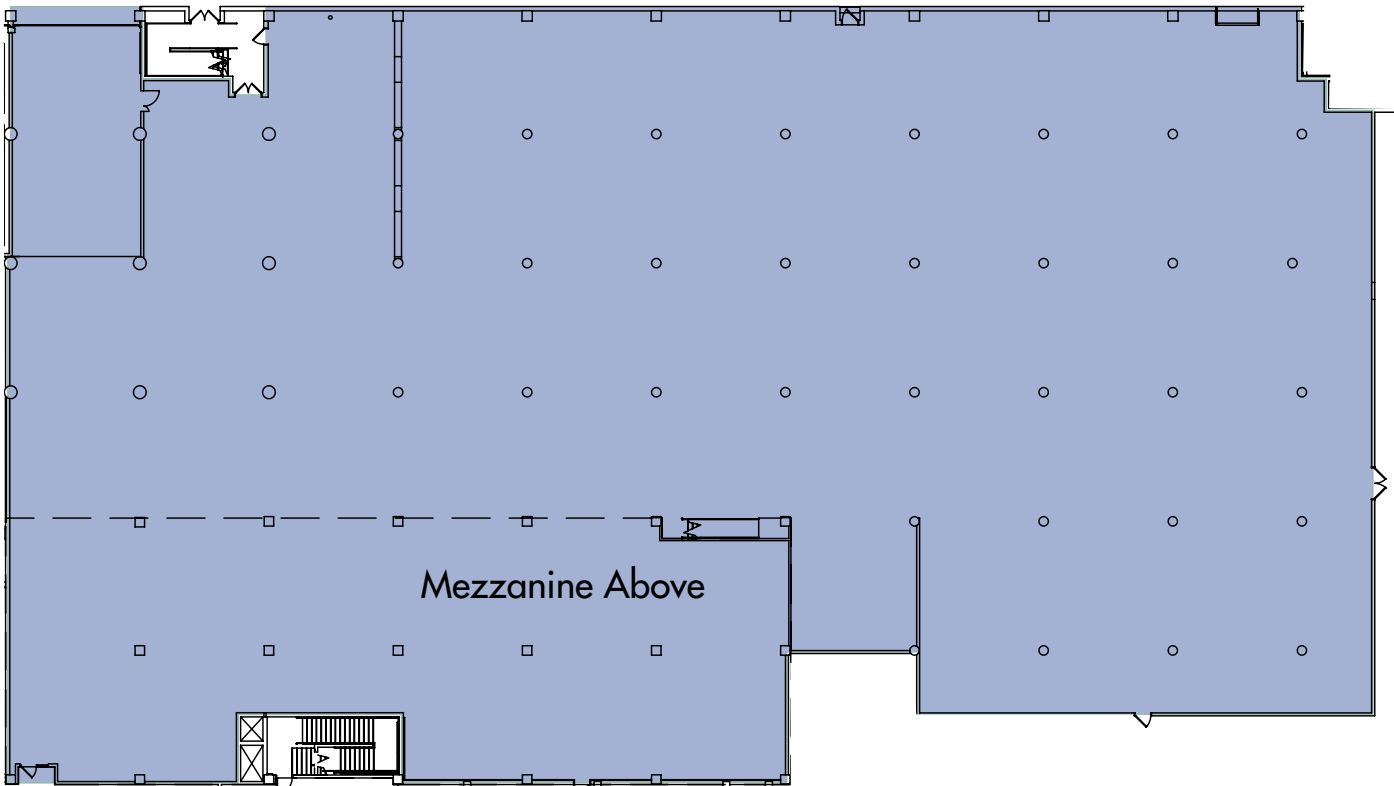
Second floor

±50,805 SF

Foundry31

3100 San Pablo Ave, Berkeley, CA





Top amenities, to attract top talent

Trails, art and transportation at your door

Foundry31

3100 San Pablo Ave, Berkeley, CA



The Greenway Path at your door



Exterior mural painted by local artist, Ian Ross



On site fitness club



Light-filled, modern common area

Our strategy is propelled by scale, sector momentum, and social impact.

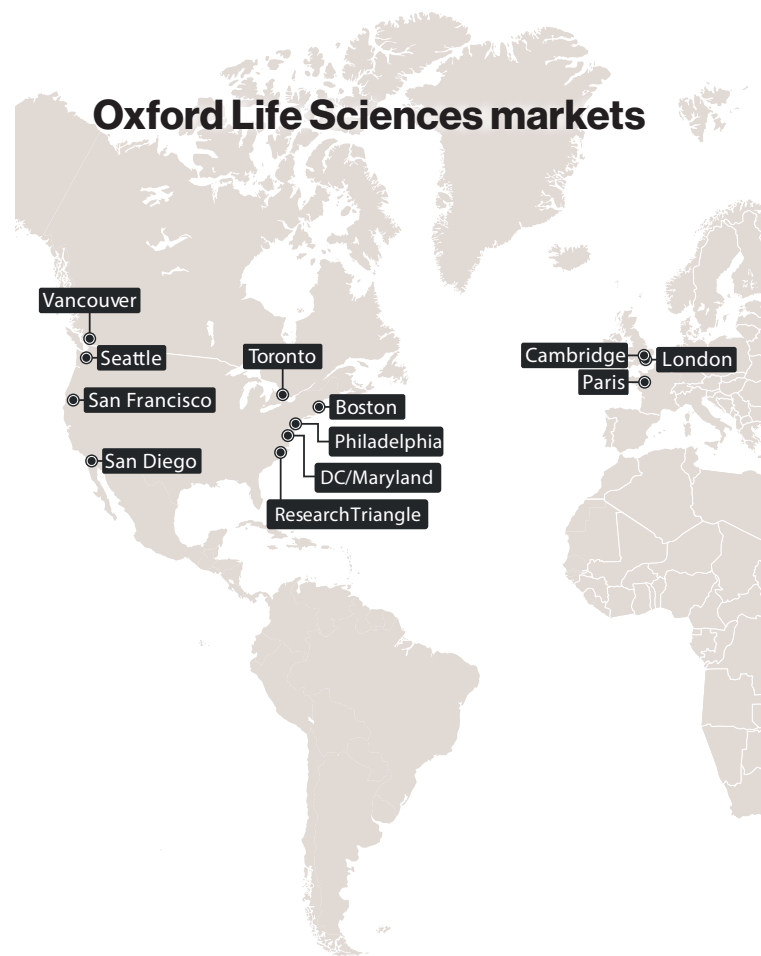
Oxford and OMERS entered the Life Sciences sector through a substantial credit investment in 2017. Since the start of 2021, we've globally invested \$3 billion and identified a significant pipeline of further development opportunities.

Committed to establishing a notable presence in the life sciences sector — one of the world's most transformative markets—we recognize the convergence of biotechnology, artificial intelligence, big data analytics, and deep learning in driving faster and more sophisticated outcomes. Simultaneously, shifting demographics, global trends, and evolving customer needs fuel industry demand and in response, we continue to scale our global presence by pursuing additional equity commitments, lending opportunities and platform investments.

Global reach

Oxford Life Sciences spans strategic markets in North America, the UK, and Europe. We focus on existing and emerging markets underpinned by the fundamentals for life sciences: universities and academic ecosystems; public and private funding and access to talent.

Oxford Life Sciences markets



Trusted Partners

AstraZeneca

BioAbility

INMAR
intelligence

G1
THERAPEUTICS

VERDESAN
THE NUTRIENT USE
EFFICIENCY PEOPLE™

GRIFOLS

CRISPR
THERAPEUTICS

ikena
ONCOLOGY

IMPACT
PHARMACEUTICAL SERVICES

onpattro
(patisirán)

ICON

Pharm-Olam
Helping Create A Healthier World

Replimune

Zytiga
(abiraterone acetate)

epiq

Alnylam
PHARMACEUTICALS

Johnson & Johnson

MatrixCare
by ResMed

Kadcyla
trastuzumab emtansine

CBI HEALTH GROUP

Roche

Pfizer

Foundry31

3100 San Pablo Ave, Berkeley, CA

Bill Benton

415.274.4421

bill.benton@nmrk.com

CA RE License #01247617

Ari Rokeach

510.923.6206

ari.rokeach@nmrk.com

CA RE License #01986061

Conor Ranahan

510.923.6204

conor.ranahan@nmrk.com

CA RE License #01850797

Abby Middleton Mondani

amondani@oxfordproperties.com

The distributor of this communication is performing acts for which a real estate license is required. The information contained herein has been obtained from sources deemed reliable but has not been verified and no guarantee, warranty or representation, either express or implied, is made with respect to such information. Terms of sale or lease and availability are subject to change or withdrawal without notice. 7896354843_07/25

OLX|FLORID

NEWMARK

