

MORRISON PLANTATION LAND

Stanton Ln • Mooresville, NC 28117

FOR
SALE



Land Available for Sale in Mooresville, NC



FEATURES

- 3.17 Acres Available for Sale
- Parcel ID #: 4647-138-8288 (Iredell County)
- Great location off Stanton Lane between Brawley School Rd and Williamson Rd intersection near Highway 150.
- Great access to I-77 and abundant amenities including retail, restaurants and hotels.
- Parcel received Conditional District Rezoning allowing for a Townhome development
- Please call for pricing.



Sue Harding

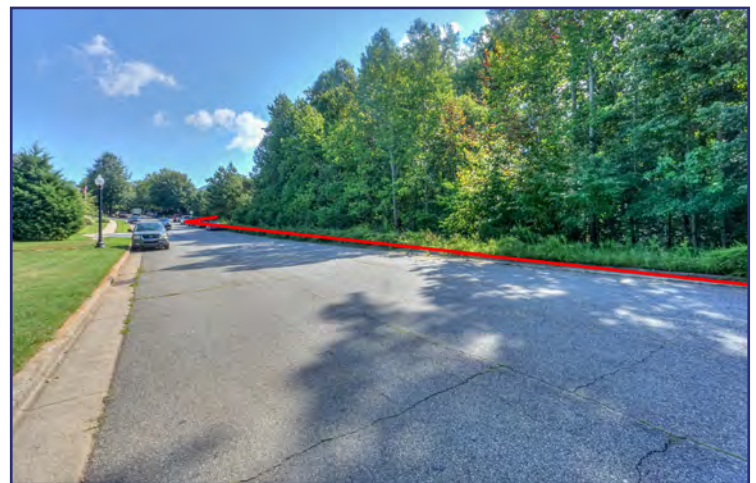
(O) 704.663.7779 • (C) 704.450.1116

sue@teamnewport.com

MORRISON PLANTATION LAND

Stanton Ln • Mooresville, NC 28117

FOR
SALE



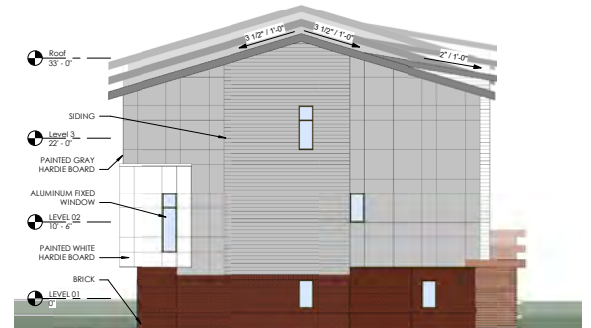
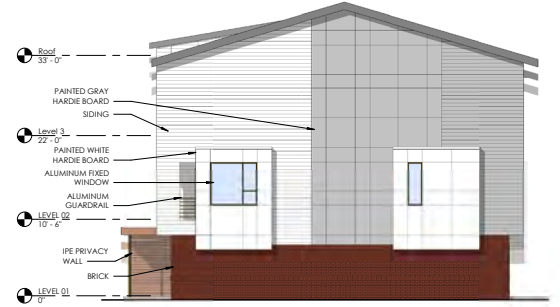
Sue Harding
(O) 704.663.7779 • (C) 704.450.1116
sue@teamnewport.com

MORRISON PLANTATION LAND

Stanton Ln • Mooresville, NC 28117

FOR
SALE

Renderings Submitted as part of Conditional District Rezoning



Sue Harding

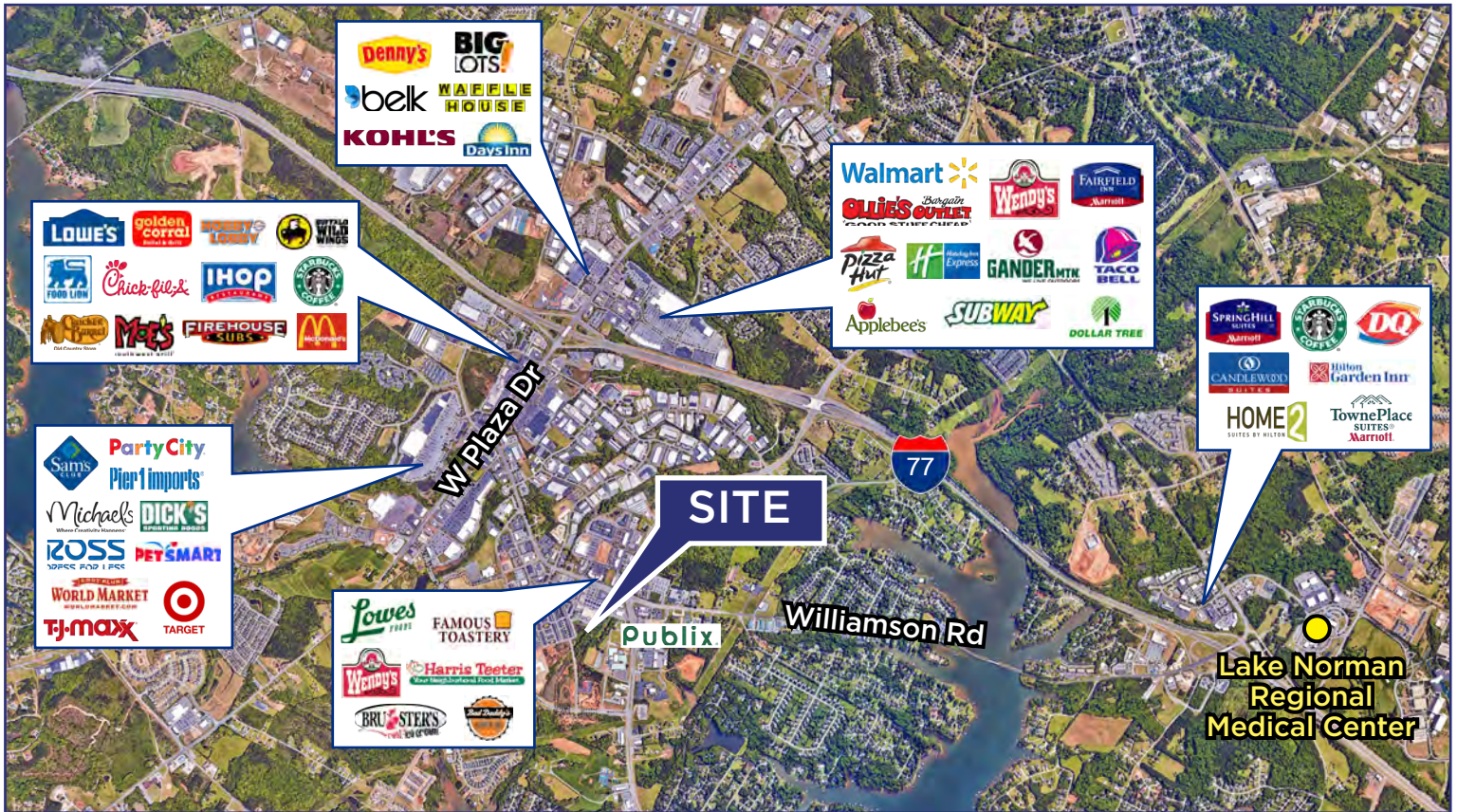
(O) 704.663.7779 • (C) 704.450.1116

sue@teamnewport.com

MORRISON PLANTATION LAND

Stanton Ln • Mooresville, NC 28117

FOR
SALE



Sue Harding

(O) 704.663.7779 • (C) 704.450.1116

sue@teamnewport.com