

INDUSTRIAL/FLEX SPACE FOR LEASE



1430 High St Pittsburgh, PA 15212



INDUSTRIAL FACILITY FACTS

- BUILDING SIZE: **16,000 SF**
- LOT SIZE: 0.33 AC
- YEAR BUILT/RENOVATED: 1950/2025
- CONSTRUCTION: MASONRY
- HEATING: GAS
- GAS: NATURAL
- POWER SUPPLY AMPS: 200 VOLTS: 240 PHASE: 3
- ZONING UI INDUSTRIAL



Jessica Jarosz

jjarosz@century-realty.com

412.512.1330

John Aderholt, Broker

jdaderholt@centuryequities.com

304.232.5411



412.235.7233



century-realty.com



info@century-realty.com



CenturyCentre, 1233 Main Street, Suite 1500, Wheeling, WV 26003



6000 Town Center Boulevard, Suite 230, Canonsburg, PA 15317

INDUSTRIAL/FLEX SPACE FOR LEASE

1430 High St Pittsburgh, PA 15212



VIEW FROM SPRING GARDEN

PROPERTY FEATURES

- **16,000 SF** Available for Lease/subdividable
- Three-Phase Power
- Gated parking located directly across the street from Building with access from the main road (Spring Garden)
- Reznor Heat / Conditioned Space



Jessica Jarosz

jjarosz@century-realty.com
412.512.1330

John Aderholt, Broker

jdaderholt@centuryequities.com
304.232.5411



412.235.7233



century-realty.com



info@century-realty.com



CenturyCentre, 1233 Main Street, Suite 1500, Wheeling, WV 26003



6000 Town Center Boulevard, Suite 230, Canonsburg, PA 15317

INDUSTRIAL/FLEX SPACE FOR LEASE



1430 High St Pittsburgh, PA 15212

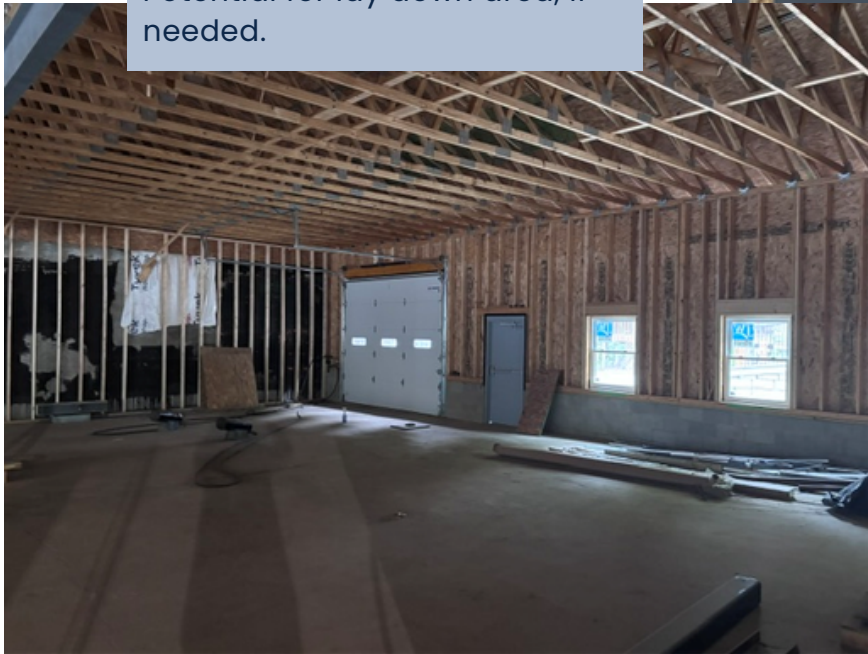
PROPERTY OVERVIEW

Ideal uses: Auto body shop, industrial uses, large scale storage, office space, car storage, boat storage.

Located approximately 5 minutes from downtown, the Strip District, the Northside and has convenient access to Route 28, I-376, and I-279.

Easy access off Spring Garden avenue for large vehicles or semis.

Potential for lay down area, if needed.



- 4 drive-in doors on lower level
- 14' ceiling height & 13' garage doors
- 2 drive-in doors on upper level
- 11' ceiling height & 10' garage doors

Jessica Jarosz

jjarosz@century-realty.com

412.512.1330

John Aderholt, Broker

jdaderholt@centuryequities.com

304.232.5411



412.235.7233



century-realty.com



info@century-realty.com



CenturyCentre, 1233 Main Street, Suite 1500, Wheeling, WV 26003



6000 Town Center Boulevard, Suite 230, Canonsburg, PA 15317