

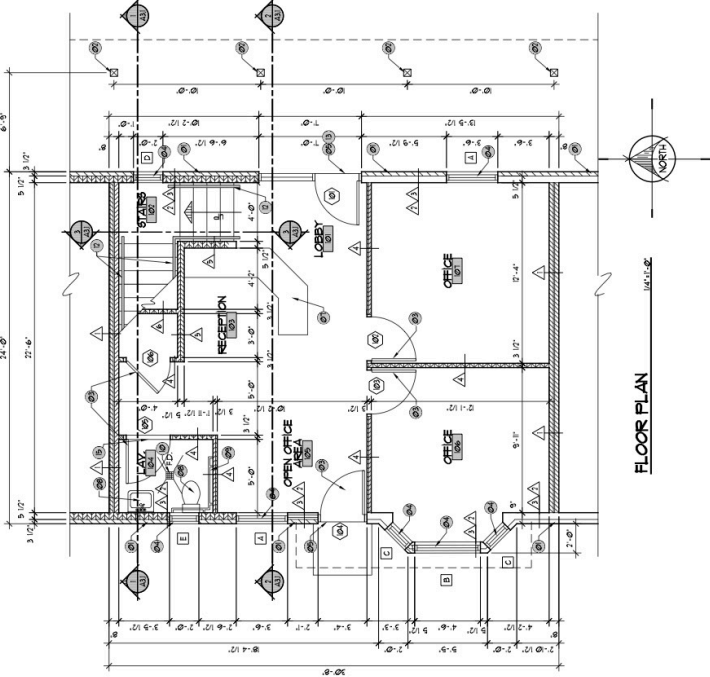


- SHEET NOTES**
- 01 - CEMENT STONE VENEER WAINSCOT - SEE SPEC.
 - 02 - STRUCTURAL POST - SEE STRUCTURAL SHEETS
 - 03 - DOOR - SEE DOOR SCHEDULE
 - 04 - ALUMINUM CLAD WINDOW - SEE WINDOW TYPES
 - 05 - DOOR THRESHOLD - SEE SPEC 7/4/4
 - 06 - HULLOCK - SEE INTERIOR ELEVATIONS
 - 07 - PULLING - SEE INTERIOR ELEVATIONS
 - 08 - PUMPING FIXTURE - SEE PUMPING SHEETS
 - 09 - 3/4" AND 1/2" HORIZONTAL GAS BAR AND 3/4" VERTICAL GAS BAR - SEE SPECS
 - 10 - FLOOR DRAIN - SEE PUMPING SHEETS - SLOPE FLOOR TO DRAIN AS REQUIRED
 - 11 - BRACKET-MOUNTED FIRE EXTINGUISHER - SEE SPEC
 - 12 - HARDWOOD HANDRAIL - SEE DETAIL 7/4/4
 - 13 - SCISSOR ENTRY DOOR - SEE DOOR SCHEDULE
 - 14 - REFRIGERATOR SPACE BELOW COUNTERTOP -
 - 15 - HANDLE THRESHOLD - SEE DETAIL 7/4/4

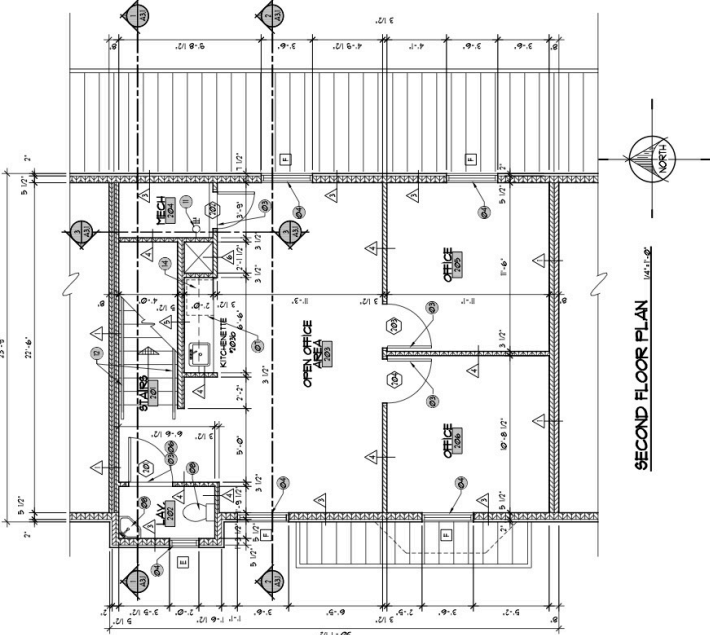
- GENERAL NOTES:**
- A - ALL OUTSIDE GYPSUM BOARD CORNERS ARE TO HAVE 1" BULLNOSE
 - B - ALL INTERIOR GYPSUM BOARD WALLS AND CEILING ARE TO RECEIVE 2 COATS OF BASE PAINT

BLOCKING NOTE
 CONSULT WITH THE MANUFACTURER AS REQUIRED AROUND DOORS, WINDOWS AND FOR CASES, WINDOW BLINDS, TOILET ACCESSORIES, ETC.

FIXTURE HEIGHT NOTE
 LOCATE PUMPING FIXTURES, ACCESSORIES AND EQUIPMENT AS PER STANDARD FIXTURE HEIGHT DETAIL XXXXX



FLOOR PLAN



SECOND FLOOR PLAN

