

±133 ACRES FOR SALE IN THE HEART OF SOUTHWEST PHOENIX
IDEAL INDUSTRIAL OUTDOOR STORAGE OR REDEVELOPMENT SITE

3635 S 43rd Ave Phoenix, AZ



8767 E. Via de Ventura
Suite 290
Scottsdale, AZ 85258
RGcre.com

MAX SCHUMACHER, SIOR
480.214.9403
Max@RGcre.com

PATRICK SHEEHAN, SIOR
480.214.9405
Patrick@RGcre.com

JACK HANSEN
480.214.9421
Jack@RGcre.com

FOR SALE

±133 ACRES IN THE HEART OF SOUTHWEST PHOENIX

Site Information



8767 E. Via de Ventura
Suite 290
Scottsdale, AZ 85258
RGcre.com

MAX SCHUMACHER, SIOR
480.214.9403
Max@RGcre.com

PATRICK SHEEHAN, SIOR
480.214.9405
Patrick@RGcre.com

JACK HANSEN
480.214.9421
Jack@RGcre.com

FOR SALE

±133 ACRES IN THE HEART OF SOUTHWEST PHOENIX

Rent Roll

TENANT	PARCEL	ACRES OCCUPIED	RENT/MONTH NNN	ANNUAL INCREASES	LEASE EXPIRES
M&P Transport	1	12.78	–	–	–
TKO	3	7.46	\$26,110	–	04/30/2026
Summit Industrial	4 & 5	13.84	\$76,120	–	02/28/2025
Enclos	6A	3.5	\$17,500	–	07/31/2026
Rio Salado Materials Group	Portion of Pit	12.00	\$18,000	–	Lease payments will commence upon receipt of permit to fill pit
Riddle Construction	8	2.71	\$10,000	–	03/21/26
WYCO	9	2.00	\$8,480	–	01/31/2026
Summit Line Construction	10	3.04	\$15,200	–	09/30/2025
My Container Now	11	3.85	\$15,400	–	08/31/2026
TOTALS		51.12	\$186,810		



8767 E. Via de Ventura
Suite 290
Scottsdale, AZ 85258
RGcre.com

MAX SCHUMACHER, SIOR
480.214.9403
Max@RGcre.com

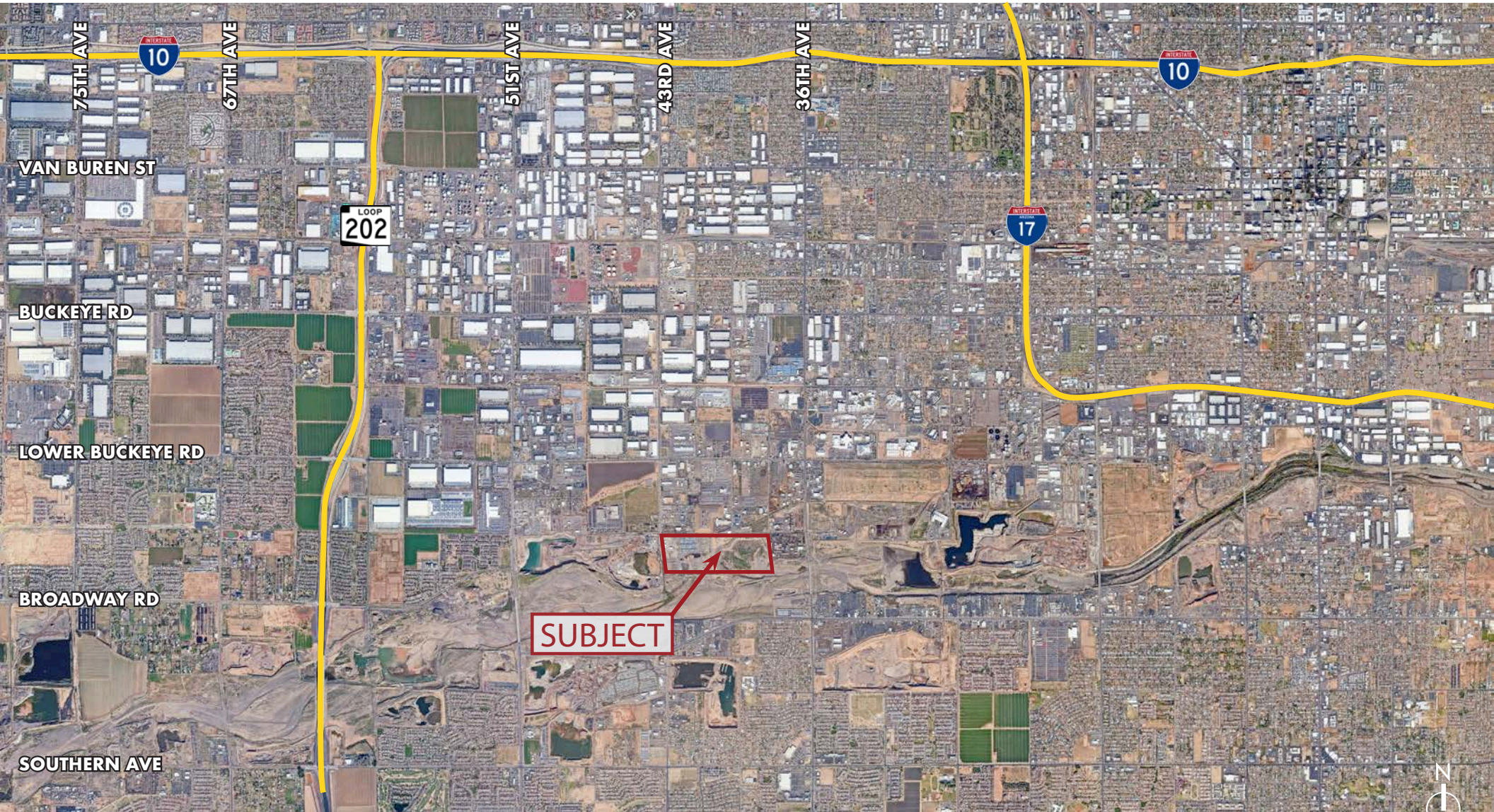
PATRICK SHEEHAN, SIOR
480.214.9405
Patrick@RGcre.com

JACK HANSEN
480.214.9421
Jack@RGcre.com

FOR SALE

±133 ACRES IN THE HEART OF SOUTHWEST PHOENIX

Site Information



The information contained herein has been obtained from sources we believe to be reliable, however, Rein & Grossoehme and its agents have not conducted any investigation regarding these matters and make no warranty or representation expressed or implied regarding the accuracy or completeness of the information. Interested parties need to verify any information that is critical to their decision process and bear all risk for inaccuracies. References to square footage or age are approximate.

8767 E. Via de Ventura
Suite 290
Scottsdale, AZ 85258
RGcre.com

MAX SCHUMACHER, SIOR
480.214.9403
Max@RGcre.com

PATRICK SHEEHAN, SIOR
480.214.9405
Patrick@RGcre.com

JACK HANSEN
480.214.9421
Jack@RGcre.com