

FORMER RITE AID

PARLIN, NJ

3553 WASHINGTON ROAD

±14,692 SF FOR LEASE

ON 2.53 ACRES

**AS-IS OR
REDEVELOPMENT
OPPORTUNITY**

FORMER PHARMACY LOCATED AT SIGNALIZED CORNER



metrocommercial.com | Plymouth Meeting, PA | Mount Laurel, NJ | Miami, FL | Philadelphia, PA

get in touch.

JOE DOUGHERTY

Office 610.260.2670

Direct 610.580.7663

jdougherty@metrocommercial.com

DAVID JUDD

Office 856.222.3037

Direct 215.906.2908

djudd@metrocommercial.com

SITUATED NEAR MILE MARKER 124 OF THE PARKWAY



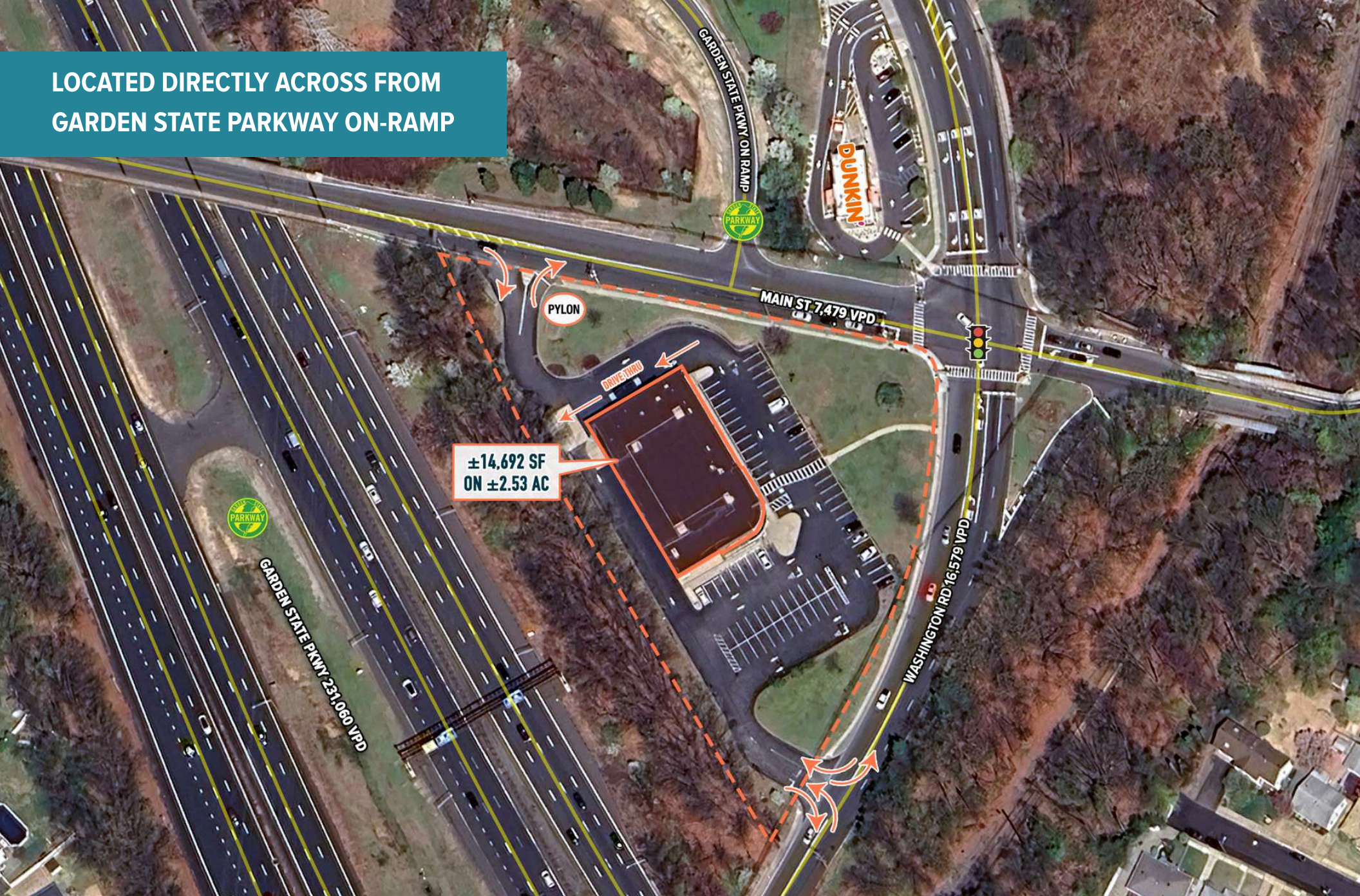
The information and images contained herein are from sources deemed reliable. However, Metro Commercial Real Estate, Inc. makes no representation whatsoever as to their accuracy or authenticity. Images shown may be modified for illustrative purposes. Images may be out-of-date and not current.

FORMER RITE AID
PARLIN, NJ
3553 WASHINGTON ROAD



www.metrocommercial.com

LOCATED DIRECTLY ACROSS FROM
GARDEN STATE PARKWAY ON-RAMP



The information and images contained herein are from sources deemed reliable. However, Metro Commercial Real Estate, Inc. makes no representation whatsoever as to their accuracy or authenticity. Images shown may be modified for illustrative purposes. Images may be out-of-date and not current.

FORMER RITE AID
PARLIN, NJ
3553 WASHINGTON ROAD



www.metrocommercial.com

70 PARKING SPACES



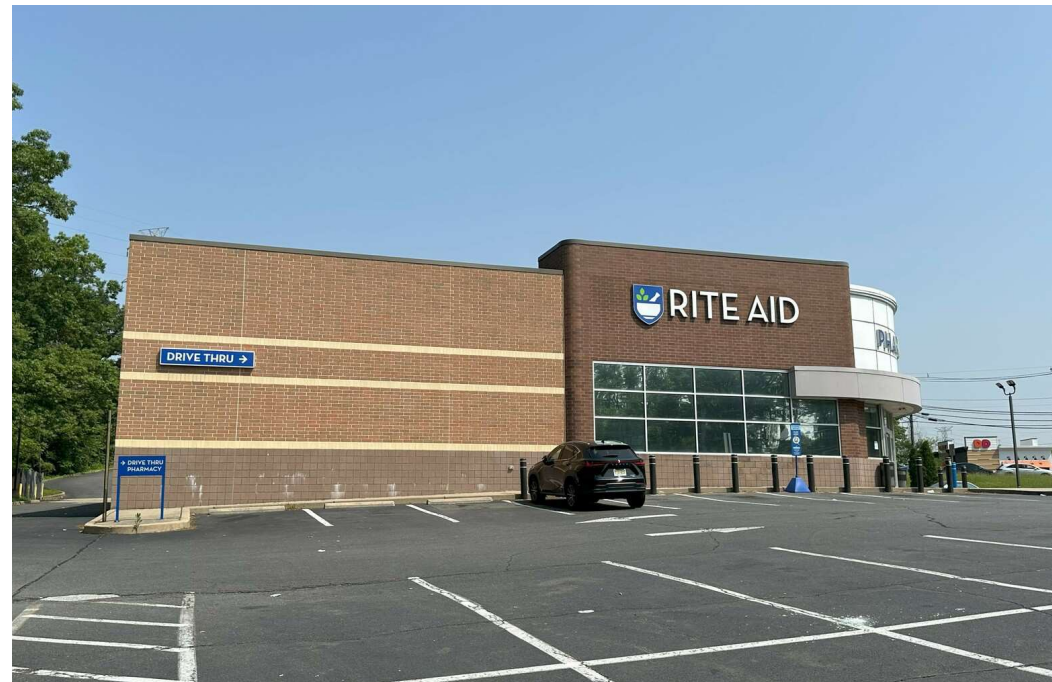
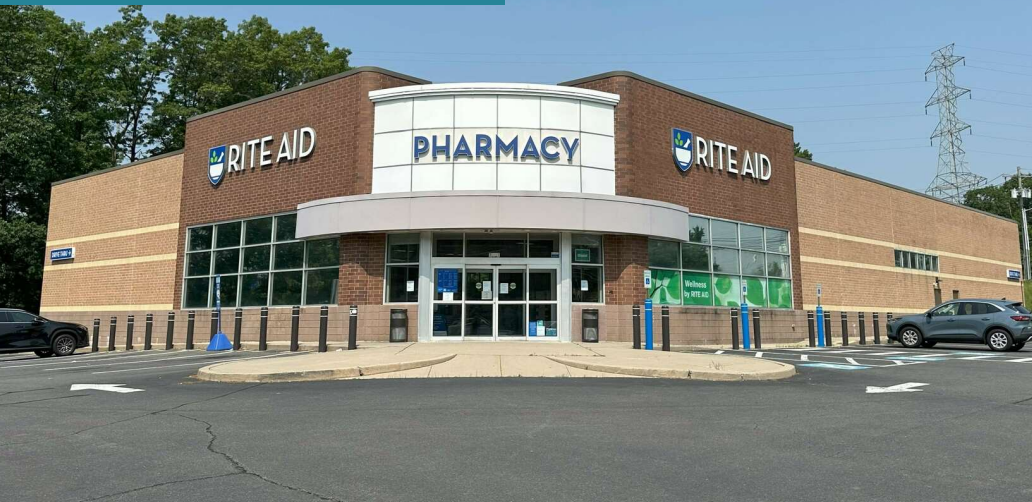
The information and images contained herein are from sources deemed reliable. However, Metro Commercial Real Estate, Inc. makes no representation whatsoever as to their accuracy or authenticity. Images shown may be modified for illustrative purposes. Images may be out-of-date and not current.

FORMER RITE AID
PARLIN, NJ
3553 WASHINGTON ROAD



www.metrocommercial.com

PROPERTY PHOTOS



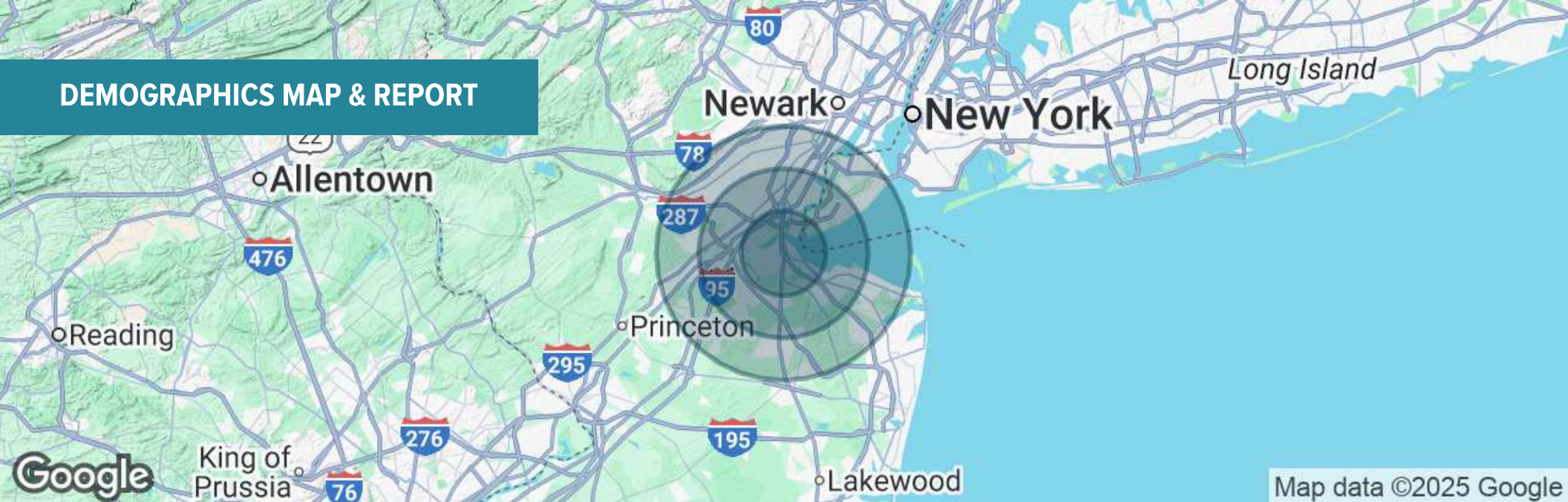
The information and images contained herein are from sources deemed reliable. However, Metro Commercial Real Estate, Inc. makes no representation whatsoever as to their accuracy or authenticity. Images shown may be modified for illustrative purposes. Images may be out-of-date and not current.

FORMER RITE AID
PARLIN, NJ
3553 WASHINGTON ROAD



www.metrocommercial.com

DEMOGRAPHICS MAP & REPORT



| POPULATION | 5 MILES | 10 MILES | 15 MILES |
|----------------------|-----------|-----------|-----------|
| Total Population | 208,401 | 1,023,889 | 1,988,012 |
| Average Age | 40 | 40 | 41 |
| Average Age (Male) | 39 | 39 | 40 |
| Average Age (Female) | 41 | 42 | 42 |
| HOUSEHOLDS & INCOME | 5 MILES | 10 MILES | 15 MILES |
| Total Households | 74,617 | 357,948 | 694,560 |
| # of Persons per HH | 2.8 | 2.9 | 2.9 |
| Average HH Income | \$116,042 | \$139,325 | \$144,169 |
| Average House Value | \$487,873 | \$544,954 | \$577,758 |

Demographics data derived from AlphaMap

The information and images contained herein are from sources deemed reliable. However, Metro Commercial Real Estate, Inc. makes no representation whatsoever as to their accuracy or authenticity. Images shown may be modified for illustrative purposes. Images may be out-of-date and not current.

FORMER RITE AID
PARLIN, NJ
 3553 WASHINGTON ROAD



www.metrocommercial.com