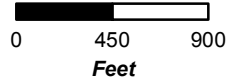


FORM - BASED CODE
SPECIFIC PLAN

TRANSECT ZONES

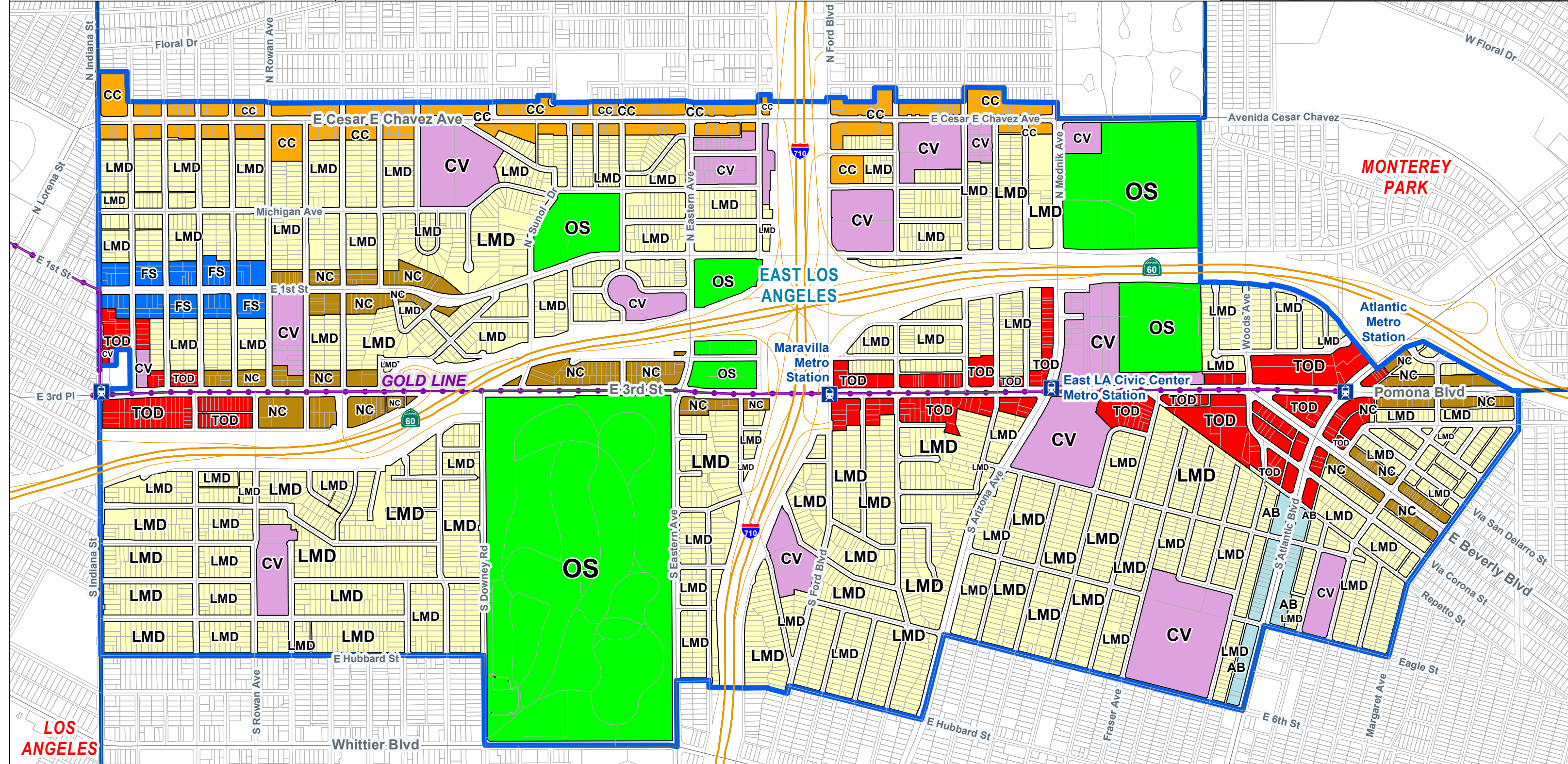
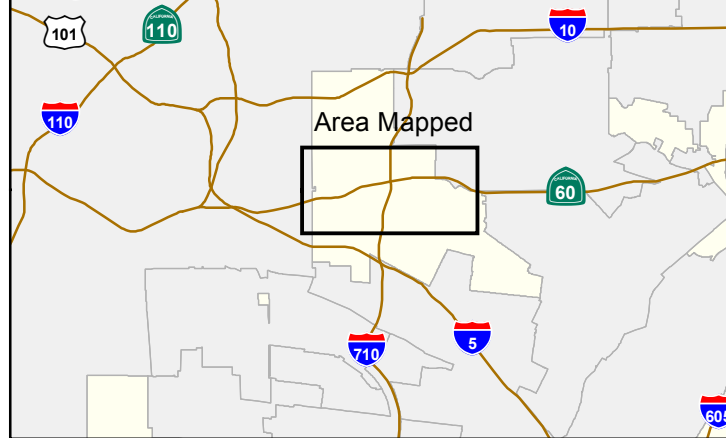


- Metrolink Stations
- Metro Rail Stations
- Metrolink
- Transitways
- Light Rail - Existing
- Light Rail - Proposed
- Light Rail - Under Construction
- Specific Plan Boundary

- 3rd Street (TOD) Zone
- Cesar Chavez Avenue (CC) Zone
- 1st Street (FS) Zone
- Atlantic Boulevard (AB) Zone
- Neighborhood Center (NC) Zone
- Low-Medium Density (LMD) Zone
- Civic (CV) Zone
- Open Space (OS) Zone

Date: 11/4/2014

VICINITY MAP:



LOS ANGELES

MONTEREY PARK

EAST LOS ANGELES

GOLD LINE

East LA Civic Center Metro Station

Maravilla Metro Station

Atlantic Metro Station

Pomona Blvd

Repetto St

Via San Delarro St

Via Corona St

E Beverly Blvd

Eagle St

Margaret Ave

E 6th St

Fraser Ave

E Hubbard St

Whittier Blvd

S Rowan Ave

E Hubbard St

LMD

LMD

LMD

LMD

LMD

LMD

LMD

LMD

LMD

LMD

LMD

LMD

LMD

LMD

LMD

LMD

LMD

LMD

LMD

LMD

LMD

LMD

LMD

LMD

LMD

LMD

LMD

LMD

LMD

LMD

LMD

LMD

LMD

LMD

LMD

LMD

LMD

LMD

LMD

LMD

LMD

LMD

LMD

LMD

LMD

LMD

LMD

LMD

LMD

LMD

LMD

LMD

LMD

LMD

LMD

LMD

LMD

LMD

LMD

LMD

LMD

LMD

LMD

LMD

LMD

LMD

LMD

LMD

LMD

LMD

LMD

LMD

LMD

LMD

LMD

LMD

LMD

LMD

LMD

LMD

LMD

LMD

LMD

LMD

LMD

LMD

LMD

LMD

LMD

LMD

LMD

LMD

LMD

LMD

LMD

LMD

LMD

LMD

LMD

LMD

LMD

LMD

LMD

LMD

LMD

LMD

LMD

LMD

LMD

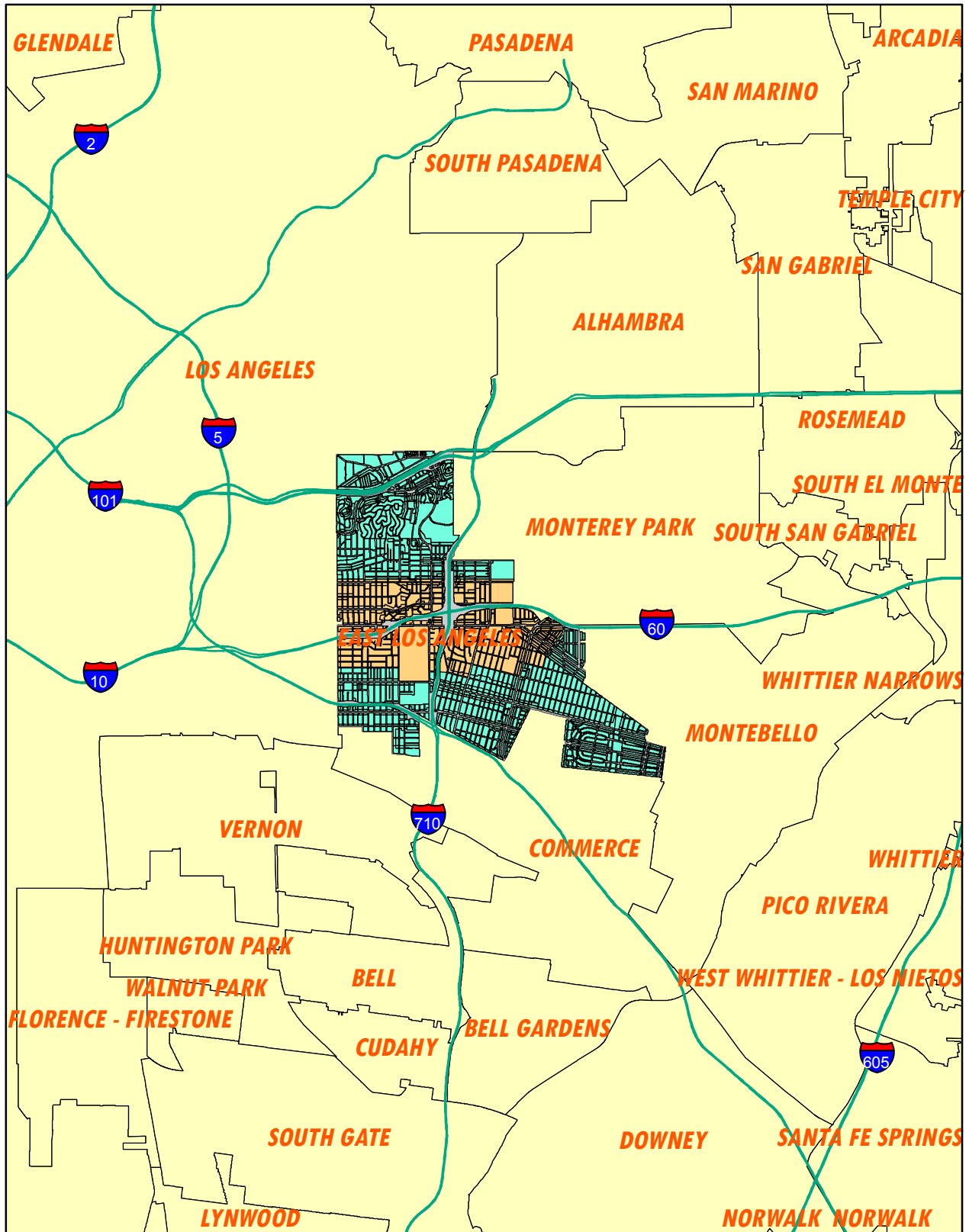
LMD

LMD

LMD

LMD

East Los Angeles Third Street Specific Plan Area (Highlighted in Gold)

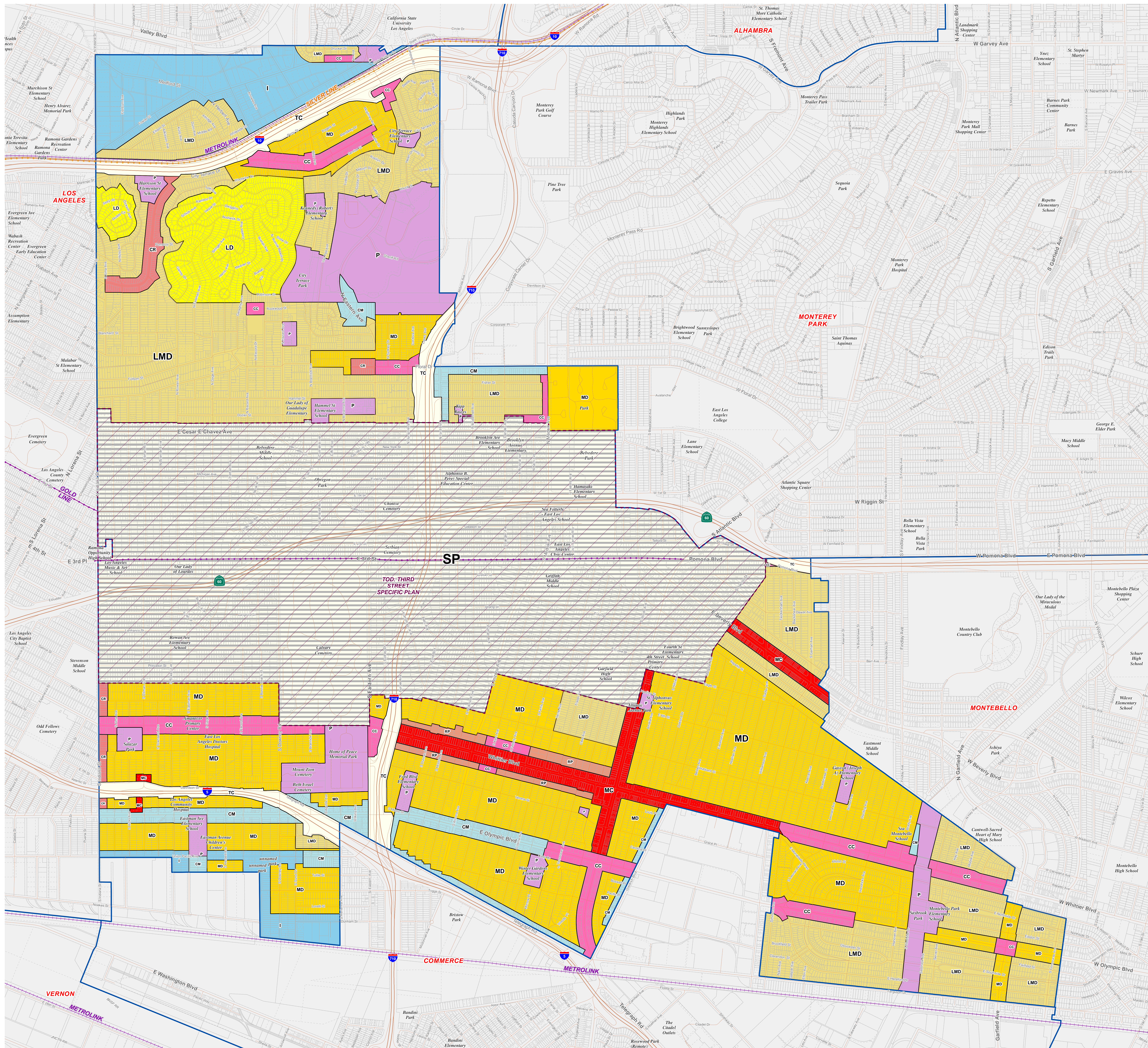


Los Angeles County

EAST LOS ANGELES Community Plan

Adopted by Board of Supervisors - 6/23/88

As Amended Through - 11/12/14 (LP 2014-00003)



LEGEND

- LD - Low Density Residential (8 du/ac)
 - LMD - Low/Medium Density Residential (17 du/ac)
 - MD - Medium Density Residential (30 du/ac)
 - RP - Residential Parking
 - CR - Commercial Residential (30 du/ac)
 - CC - Community Commercial
 - MC - Major Commercial
 - CM - Commercial Manufacturing
 - I - Industrial
 - P - Public Use
 - SP - Specific Plan
- Transit Lines
 - Metrolink
 - Transitways
 - Light Rail - Existing
 - Light Rail - Proposed
 - Light Rail - Under Construction

Base Features

- Lot, Cut/Deed, Subdivision and Easement Line
- Parcels
- City / Unincorporated Community Boundary
- Surrounding City
- Surrounding Unincorporated Community
- National Forest

Overlays *

- Transit Oriented District
- Employment Protection Districts
- Specific Plan (SP)

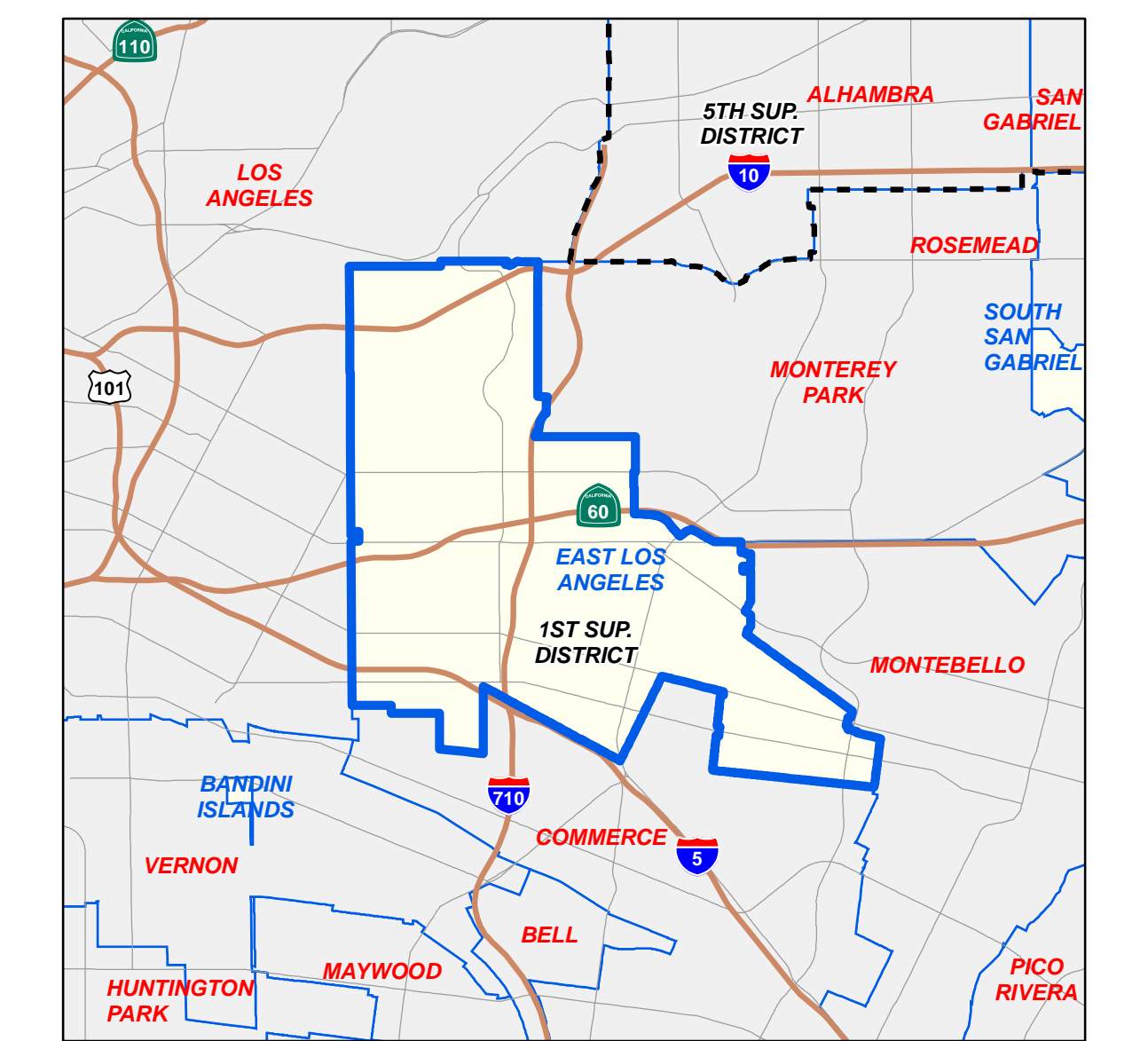
SOURCE:

Street Centerline data from 2010 TIGER (US Census Bureau), modified through the L.A. County Countywide Address Management System (CAMS).

Parcel data is sourced from the L.A. County Assessor's Office.

* The Special Management Areas, which are comprised of environmentally sensitive, hazardous, and resource areas, are not shown on this map. Please refer to the General Plan Land Use Element for more information on the Special Management Areas.

VICINITY MAP:



KEY MAP:



Current as of: December, 2014



LOS ANGELES COUNTY Department of Regional Planning 320 W. Temple St. Los Angeles, CA 90012

