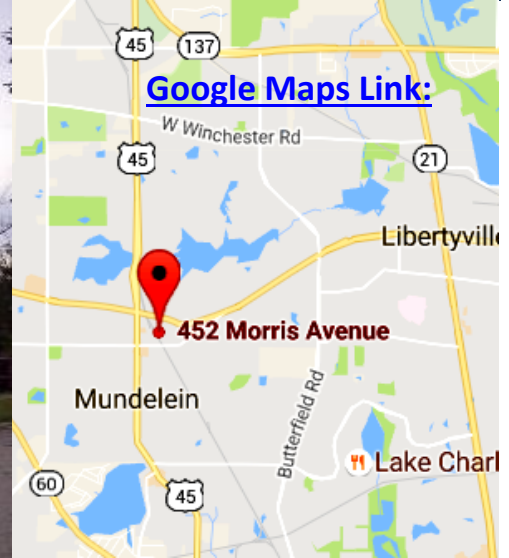


FOR LEASE:

2,100 Sq. Ft. Choice Office with Warehouse Space
452 Morris Avenue • Mundelein • IL 60060



PROPERTY HIGHLIGHTS:

AVAILABLE SPACE: Approx. 614 Sq. Ft. - Office
Approx. 1486 Sq. Ft. - Warehouse

BASE RENT: \$7.42 Sq. Ft. Modified Gross
\$1300/Mo

BUILDING TYPE: Office & Office-Warehouse

BLDG. CONST.: Block & Dryvit

CEILING HEIGHT: 9' in Office / 12' Clear in Whse

POWER: 200 AMP / 240 Volt

HVAC: Gas Forced Air, Central Air

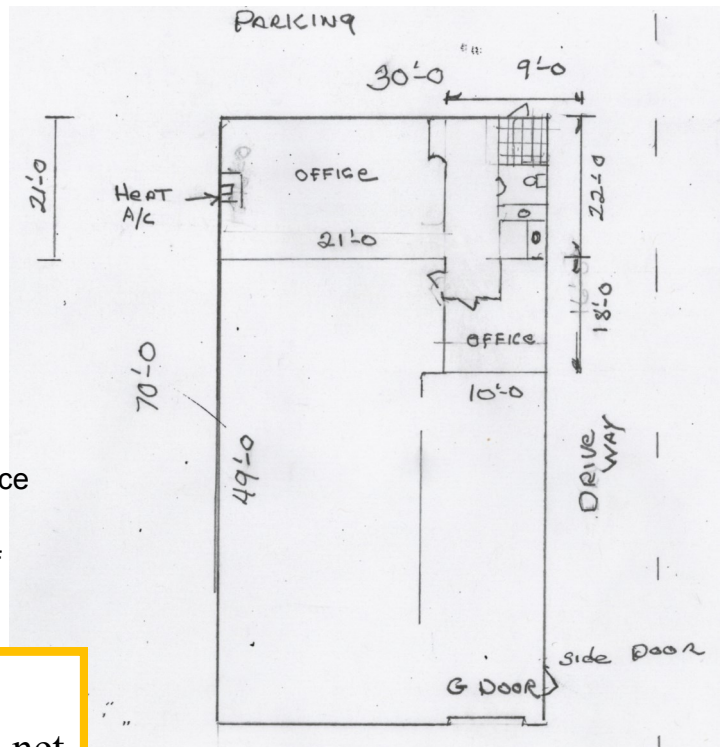
PARKING: Common

SPRINKLERED: None

COMMENTS:

Choice office with warehouse space, 614 Sq. Ft. of office with built-in furniture and display area, cubicle area, kitchen, washroom, reception area plus 1486 Sq. Ft. of warehouse.

DIRECTIONS: Morris Ave. & Park St., South of Route 176 and East of Route 45.



FLOOR PLAN

Contact: [Ken Eichelberger](mailto:Ken.Eichelberger@sbcglobal.net)
847-533-7144 (Cell) / jcf.ike@sbcglobal.net

JC **FORNEY** INC
REALTY

Commercial / Industrial / Investment
Serving Lake County Since 1935

131 West Park Avenue • Libertyville • IL • 60048
www.jcforneyrealty.com
Office: (847) 362-2000
Fax: (847) 362-7341