



950 Gilman Street Offices

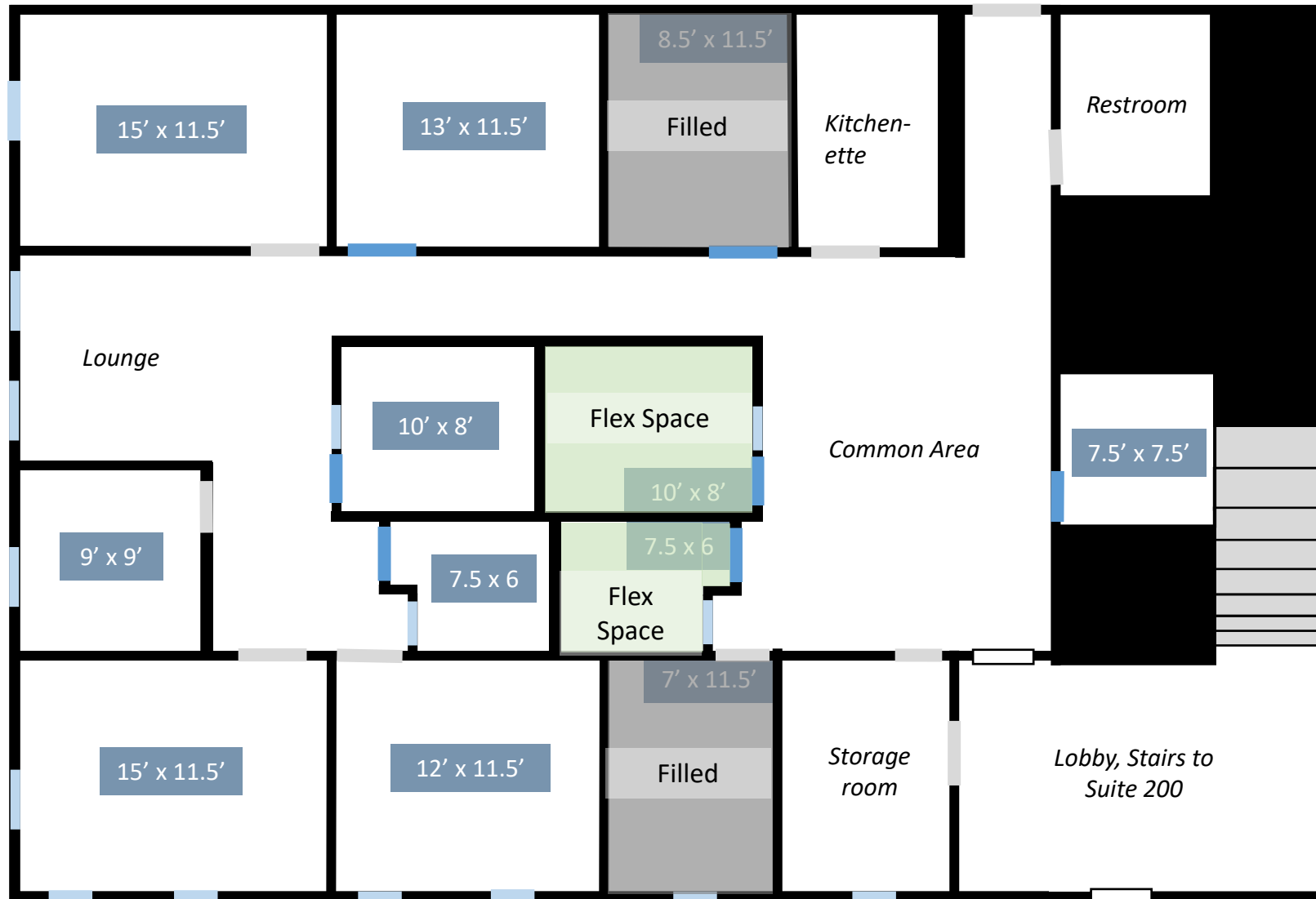
Flexible space for individuals and small growing companies



Location features:

- Ample street parking
- Bike parking in front of building
- Next to Whole Foods and Phil's Coffee.
1-2 minute walk to many restaurants,
breweries, wineries, and shops
- 1 minute drive from I-80, making
commute easy from Oakland,
Richmond, Marin, etc.
- 1 minute walk from bus stop





Floor Plan



12 additional private offices upstairs can be rented for spillover capacity!

You will have first-in-line access to the conference room upstairs.

Wall colors denote. . .

-  Door with patterned privacy glass
-  Solid door
-  Window
-  Transparent door (entrance)

Conference room

The conference room comfortably seats 16 and has A/V and conferencing capabilities. It will be available to both the upstairs and downstairs occupants.

The company renting your suite has first-in-line access to the conference room, which is shared with other occupants outside of the hours that you book it.



Parking Space

We never have trouble finding street parking on this block, but if there is any interest we are also offering a reserved parking space next to the suite for \$175/mo.

