

RINEHART PARC



Insite
COMMERCIAL
REAL ESTATE



**FOR LEASE:
NEW RETAIL DEVELOPMENT**

RINEHART RD & ST. JOHNS PKWY, SANFORD FL 32771

TIFFANY BROWN
772-475-9944

ALEX BISBEE
407-864-6444



PROPERTY HIGHLIGHTS

- New development located in the sought-after Sanford / Rinehart retail corridor, less than 1 mile from both I-4 and SR 417.
- Suites available from 2,000 - 9,000 SF.
- 970 Class A, luxury apartments planned on site along with 6 new construction, Class A multifamily projects within 2 miles.
- Unique “southern style” all-white brick arched window design.
- Strong parking ratio at 8.5 spaces per 1,000 SF.

2025 DEMOGRAPHICS



Population

1 Mile	8,719
3 Miles	54,386
5 Miles	127,080



Employees

1 Mile	11,157
3 Miles	31,785
5 Miles	69,924



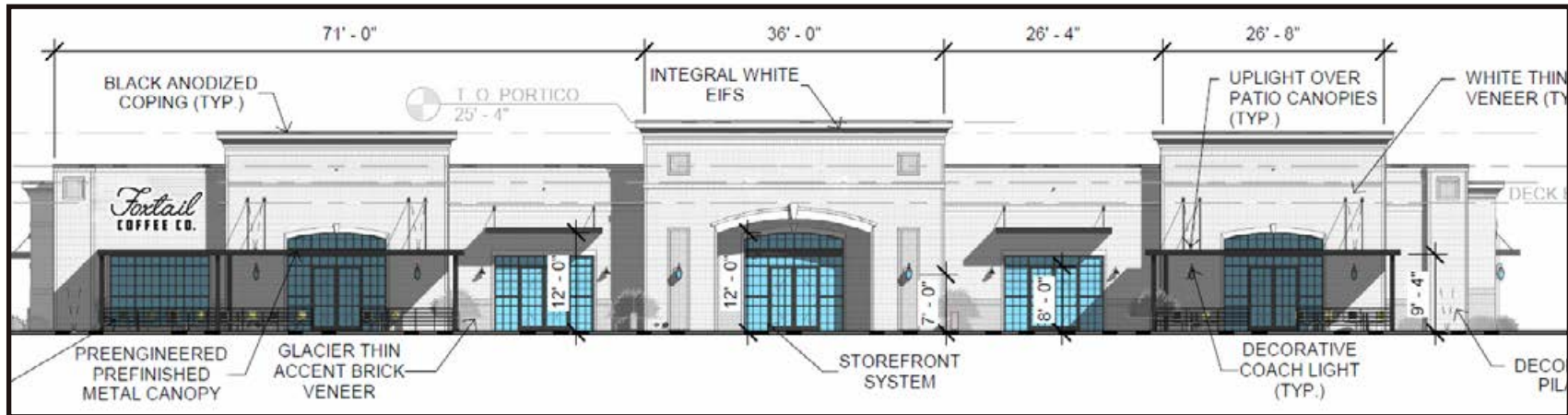
Average Household Income

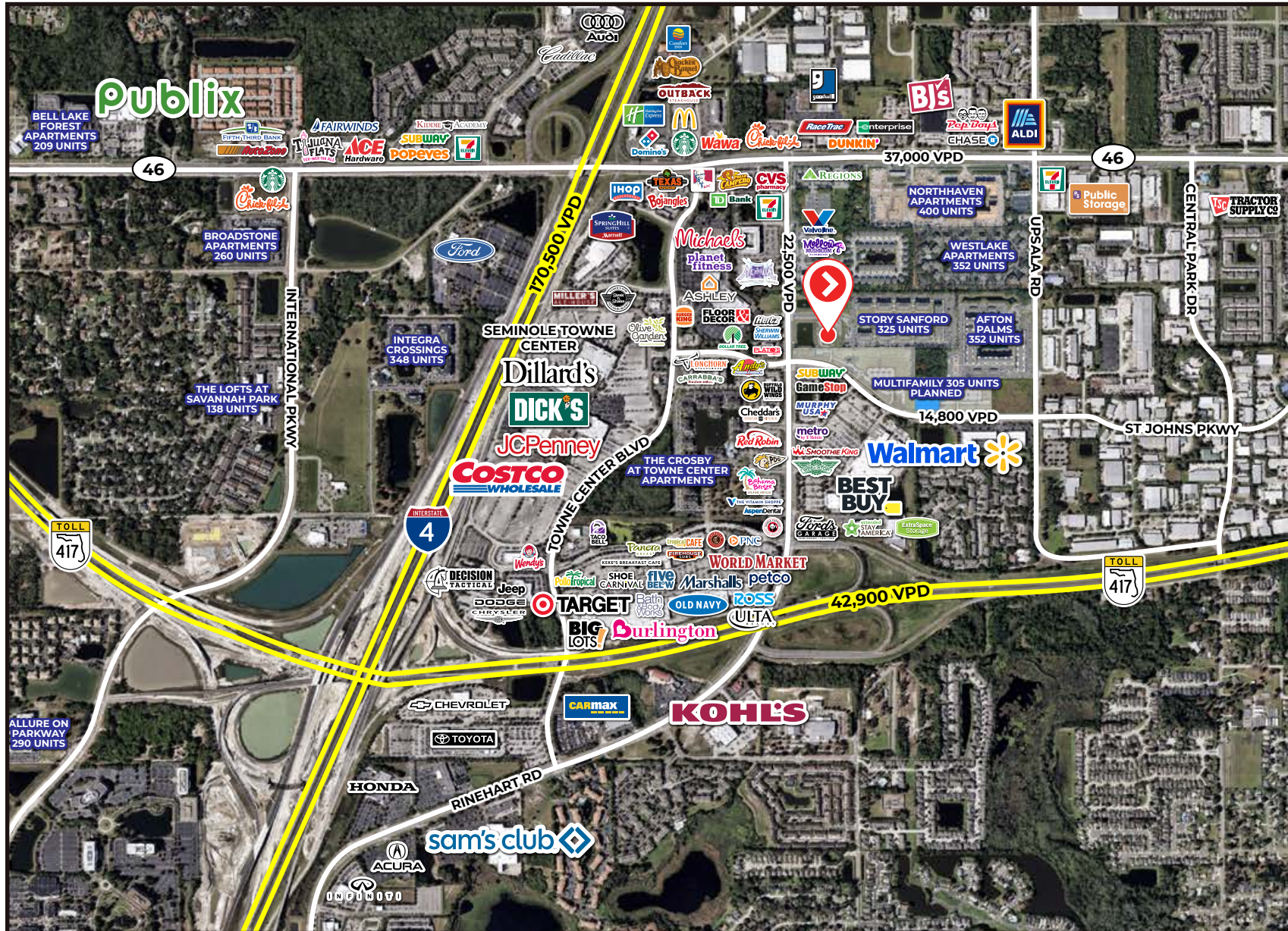
1 Mile	\$80,232
3 Miles	\$102,630
5 Miles	\$104,729



Households

1 Mile	3,479
3 Miles	21,557
5 Miles	49,520





FOR MORE
INFORMATION
PLEASE CONTACT

TIFFANY BROWN

772-475-9944

TBROWN@INSITEREI.COM

ALEX BISBEE

407-864-6444

ABISBEE@INSITEREI.COM

