

SALE PRICE:
\$1,800,000

CONTACT | Andy Hayes 864-706-0189
ahayes@spencerhines.com

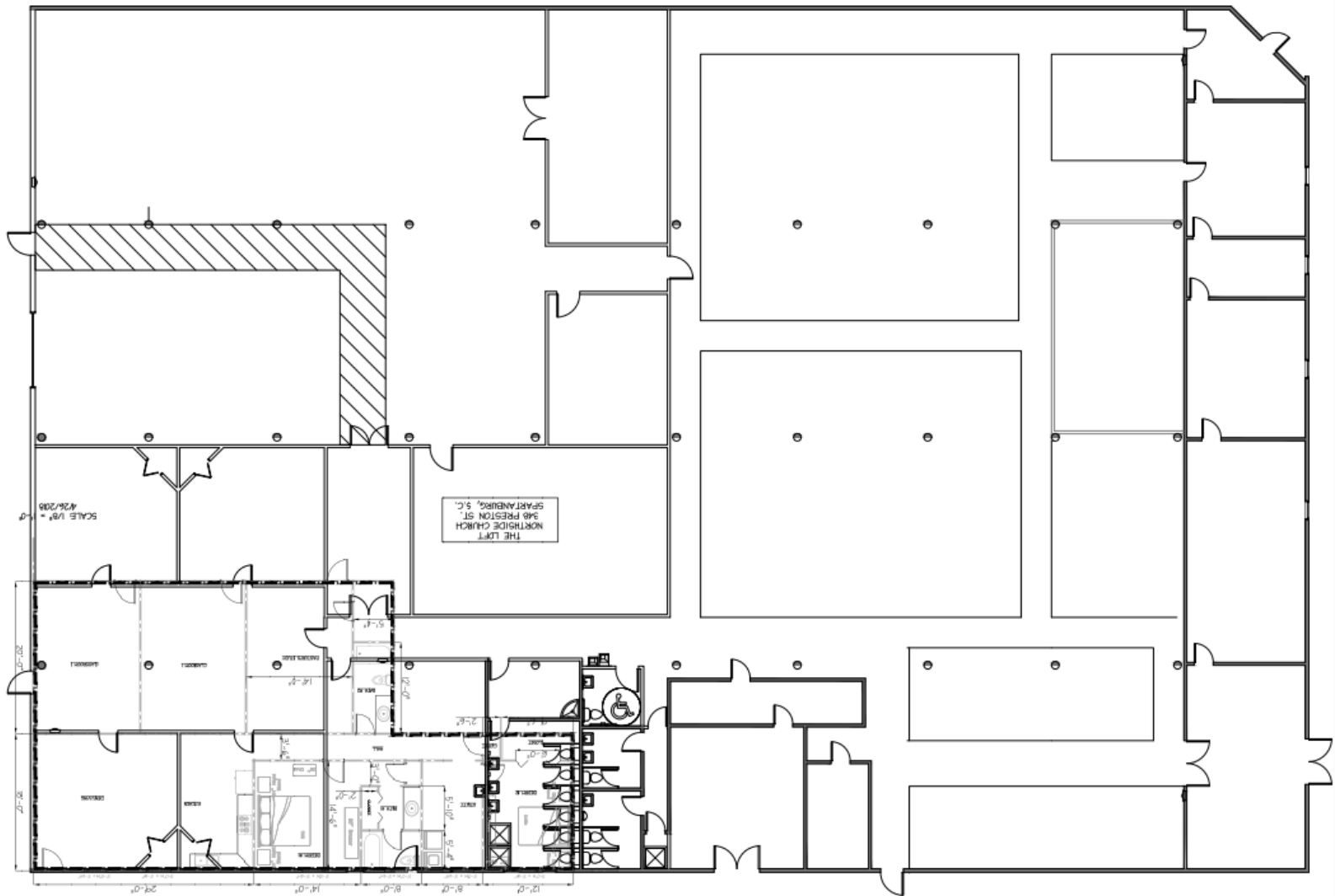
CoStar
POWERBROKER

WWW.SPENCERHINES.COM

COMMERCIAL REAL ESTATE SALES, LEASING, & INVESTMENTS

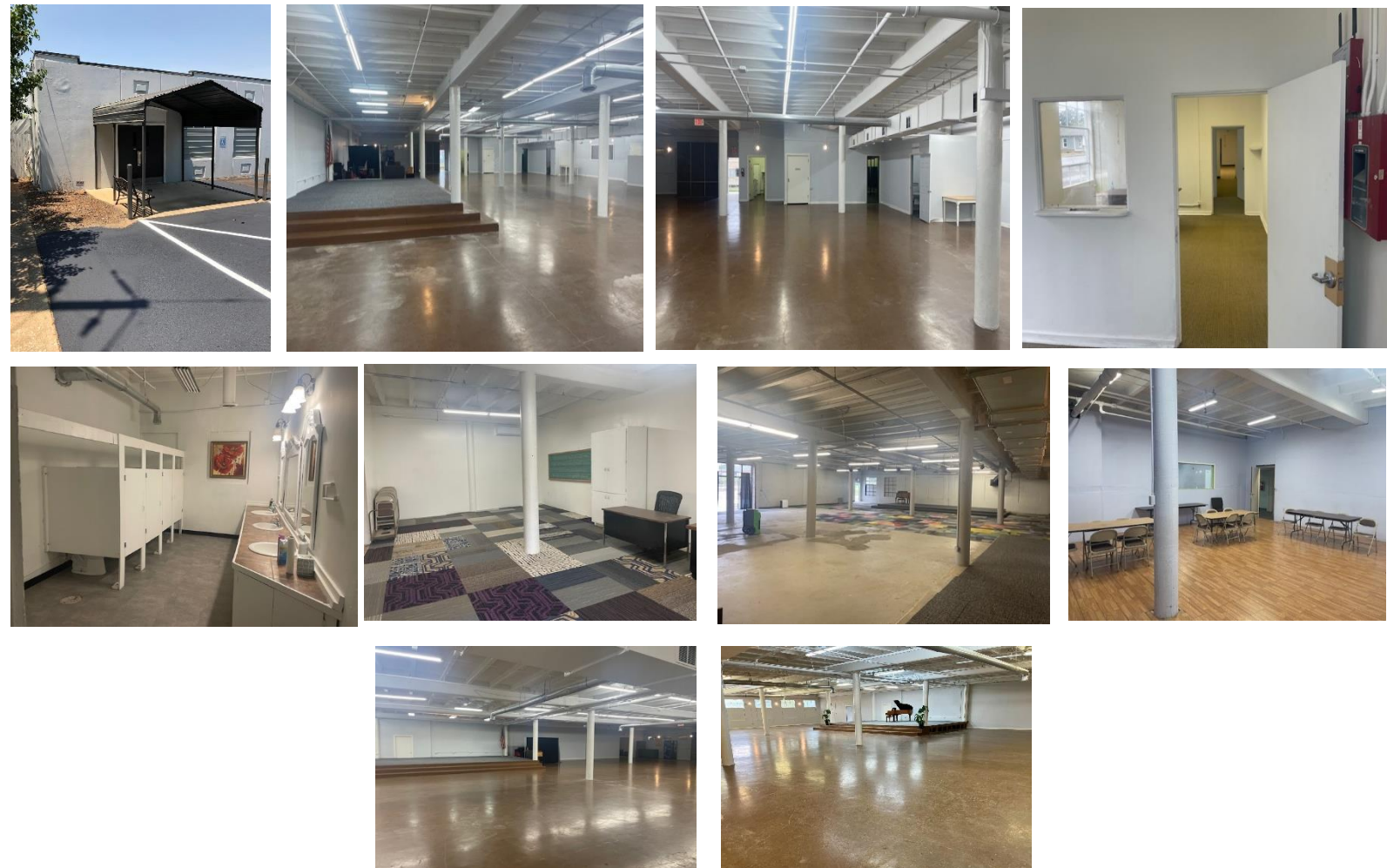
215 N. Pine Street, 1st floor, Spartanburg, SC 29302

- 20,050+/- sq. ft. located on Preston Street. Multi-purpose facility with many possibilities.
- Assembly/Event Space – 12,000± sq. ft. and 300+ capacity
- Administrative Offices – 6,000± sq. ft.
- Residential apartment - 1800±
- Building is 100% heated & cooled.
- Situated on the Northside of Spartanburg adjacent to the revitalization of the City of Spartanburg's Northside Community.
- Property is conveniently located minutes from downtown
- Building is currently the home of The Northside Church
- Spartanburg County Tax Map # 7-11-08-150.00



WWW.SPENCERHINES.COM

COMMERCIAL REAL ESTATE SALES, LEASING, & INVESTMENTS
215 N. Pine Street, 1st floor, Spartanburg, SC - 864.583.1001







2025 BY THE NUMBERS

As a matter of policy, OneSpartanburg, Inc. does not report new investment, job totals, or room nights from projects or contracts in which we were not directly engaged.

\$745M*

CAPITAL INVESTMENT



37%
NEW
63%
EXPANSION

Equal to **\$2.04 million** every single day

13M SQ FT

SPEC SPACE
planned or under
construction



23*

PROJECTS

1,220*

JOBS

90

**REQUESTS FOR
INFORMATION**

PROJECT BREAKDOWN BY INDUSTRY

49.0%

Advanced
Manufacturing

13.3%

Advanced
Materials

5.6%

Automotive

5.6%

Distribution &
Logistics

6.7%

Life Sciences

2.2%

Commercial

4.4%

Aerospace

10.0%

Agribusiness

2.2%

Multifamily

1.0%

Unclassified/
Unknown

What a great year for existing industry expansion across Spartanburg County. Companies we recruited have found success here, and that success has enabled many of them to reinvest in their facilities, their operations, and ultimately, in our people. It was also an exciting year for several sectors we are heavily courting, including life-sciences and biotechnology, and the soft mobility sector. All indicators are that we have another banner year ahead.

KATHERINE O'NEILL
Chief Economic Development Officer
OneSpartanburg, Inc.

DOWNTOWN DEVELOPMENT

95.9%

**OFFICE
OCCUPANCY RATE**

91.3%

**RETAIL
OCCUPANCY RATE**

84.9%*

**MULTIFAMILY
OCCUPANCY RATE**

3,700+

HOUSING UNITS
in the pipeline or under
construction within 5 miles
of Downtown Spartanburg

39,462

PEDESTRIANS
on Main Street
every week

\$611.3 **MILLION IN
DEVELOPMENT**

Underway or in the pipeline
in Downtown Spartanburg,
including Fifth Third Park, home
of the Hub City Spartanburgers,
a Planetarium, and soon, a City-
County Joint Municipal Complex

*Occupancy rate reflects several new multifamily projects entering market in 2025

6 

LEGISLATIVE PRIORITIES
progressed during the 2024
Legislative Session

4.7% 

UNEMPLOYMENT RATE
across Spartanburg County
through November 2024

57.2% 

**LABOR FORCE
PARTICIPATION RATE**

POWER UP SPARTANBURG


Power Up Spartanburg, an initiative of Spartanburg County and OneSpartanburg, Inc., is a movement to transform Spartanburg County into the #1 place in the U.S. to start, run, and grow a small or minority business.

\$136K 

**AVERAGE REVENUE
GROWTH**
among self-reporting Power
Up participants in 2024

180 

JOBS CREATED
among self-reporting
Power Up participants in
2024

12 

NEW CONTRACTS
secured by small businesses
through Power Up: Securing
Contracts, valued at a total
of more than \$1 million.

\$32M 

DIRECT SPENDING
from sports events
and meetings in 2024

85 

**SPORTS EVENTS AND
MEETINGS RECRUITED TO
SPARTANBURG COUNTY**
which included
20 different sports

HOSTED

RENDEZVOUS SOUTH

First S.C. Destination to Host
50+ meeting/event planners
50+ southern destination teams

NCAA DIVISION II MEN'S AND WOMEN'S CROSS-COUNTRY REGIONALS

AWARDED

**2025 S.C. GOVERNOR'S CONFERENCE
ON TRAVEL & TOURISM**

**2026 NCAA DIVISION I AND DIVISION II MEN'S
AND WOMEN'S CROSS-COUNTRY REGIONALS**