

FOR LEASE

20710 FOSTER COURT, BUCYRUS, KS 66013



PROPERTY HIGHLIGHTS

- Nicely finished office building
- Free standing
- Open floor plan
- Two ADA compliant restrooms
- Three separate entrances
- Large dine-in kitchen
- Newly resurfaced lot
- 29 off-street parking spaces

OFFERING SUMMARY

BUILDING SIZE: 5,022 SF

YEAR BUILT: 2000

ZONING: PEC3

LEASE RATE: \$17/sq ft MG



PAUL BYERS

c: 913.909.9700

e: byerscommercial@gmail.com



Byers Commercial



FOR LEASE

20710 FOSTER COURT, BUCYRUS, KS 66013



PAUL BYERS

c: 913.909.9700

e: byerscommercial@gmail.com



Byers Commercial



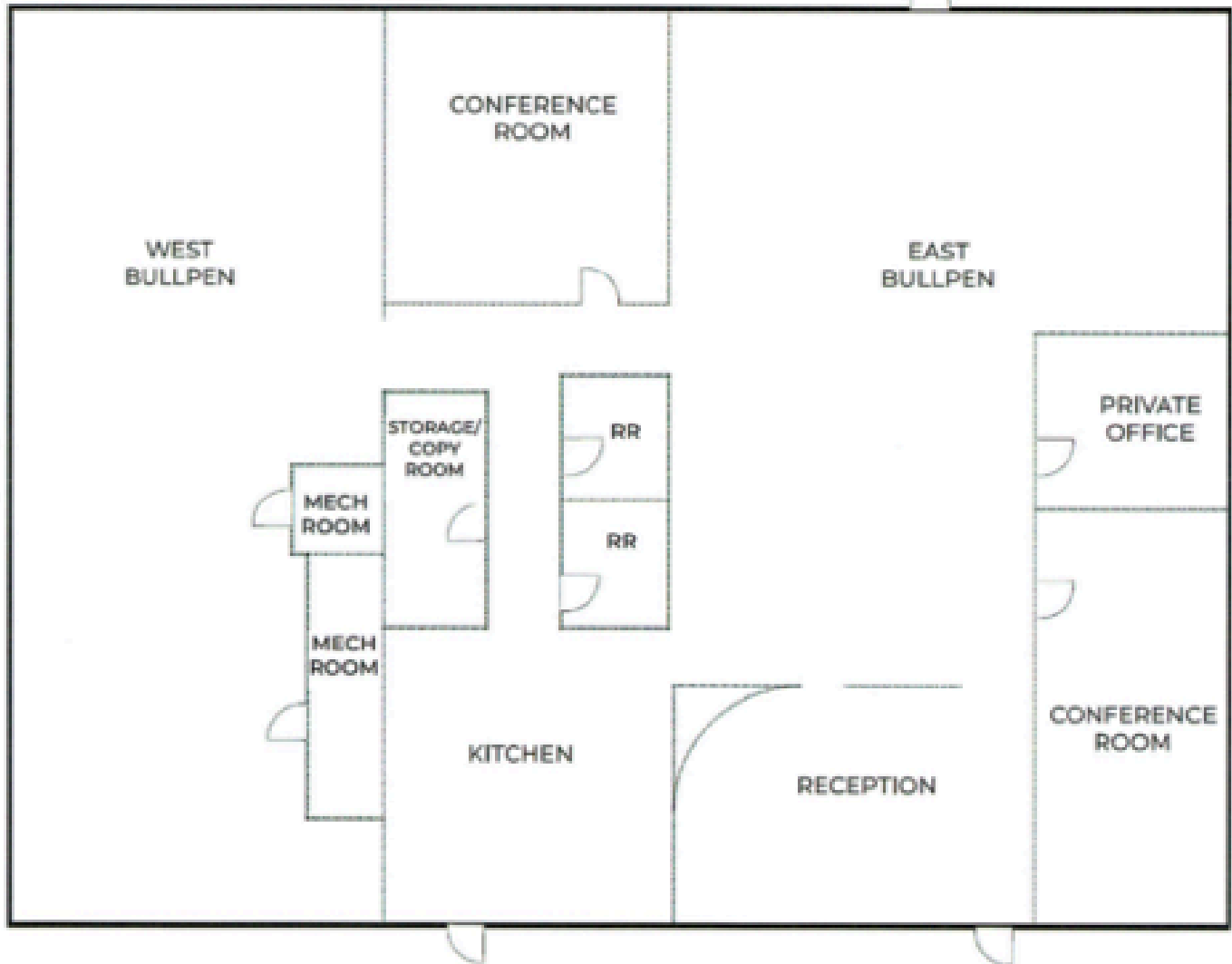
FLOORPLAN

20710 FOSTER COURT, BUCYRUS, KS 66013



W 207th St

Entry



Foster Ct.



PAUL BYERS

c: 913.909.9700

e: byerscommercial@gmail.com



Byers Commercial

