

4820 BUSINESS CENTER DRIVE FOR LEASE

Fairfield, CA

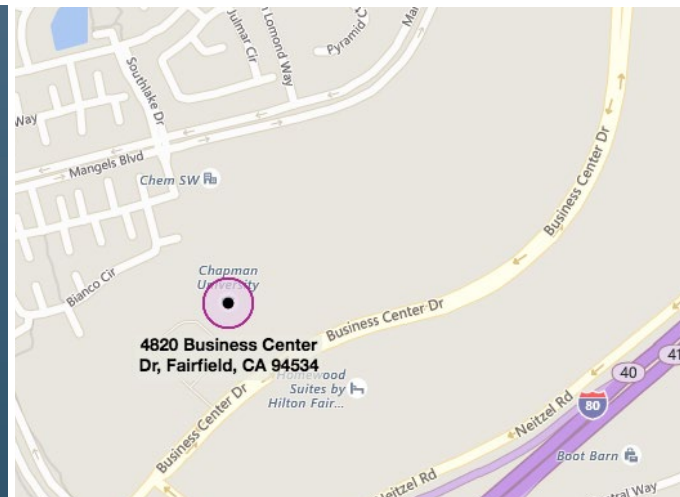
Class "A" Office Space



Property Highlights

- 54,018 SF, 2-story class "A" office building
- **First Floor**
Suite 120: 2,715 SF (rentable)
Suite 140: 1,102 SF (rentable)
- **Second Floor**
Suite 240: 2,425 SF (rentable)
Suite 245: 2,056 SF (rentable)
- Excellent visibility and access from Interstate 80 & 680
- 4 per 1,000 SF parking ratio
- Fiber optics available at site
- Extensive glass line with mature landscaping

To schedule a tour or to obtain pricing please contact



Green Valley Corporate Park is a 132-acre business park entitled for over 2,000,000 sf of office and high-tech space, hotel, restaurants, and child-care. The buildings feature freeway visibility and outstanding project exposure. The park is located approximately 39 miles to San Francisco and 35 miles to Sacramento. The surrounding area features a large, well-educated labor pool, affordable housing, and unsurpassed quality of life amenities.

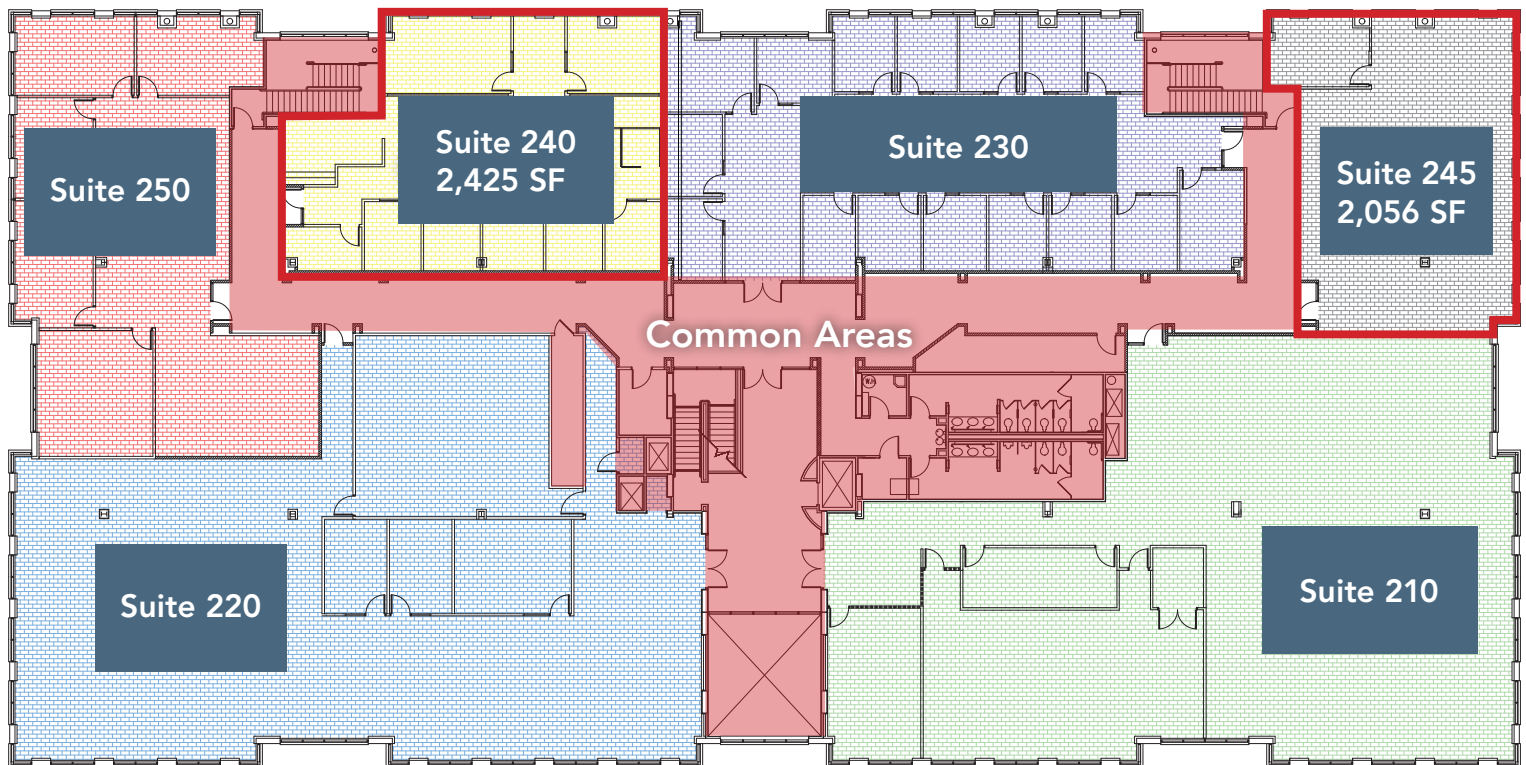


SHOEMAKER
COMMERCIAL
REAL ESTATE

Chuck Griffen
Associate Sales Person
831.234.3023
chuck@shoemakercommercial.com
CalBRE# 01227041

4820 BUSINESS CENTER DRIVE FLOOR PLAN

Second Floor



SHOEMAKER
COMMERCIAL
REAL ESTATE

Chuck Griffen
Associate Sales Person

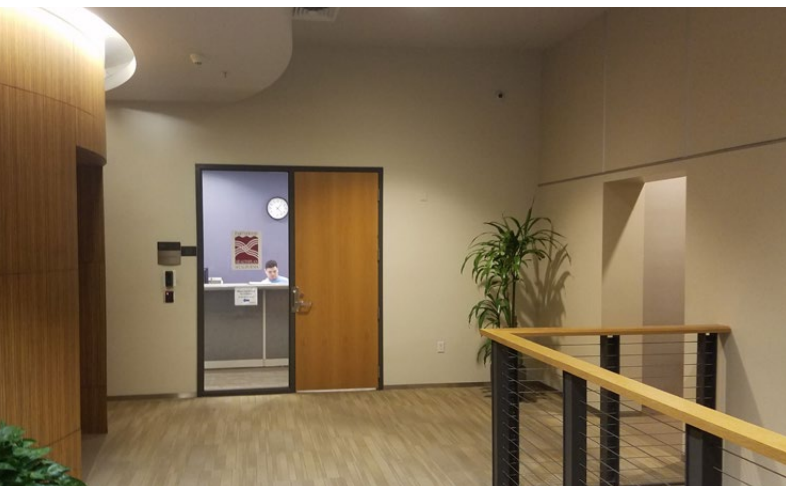
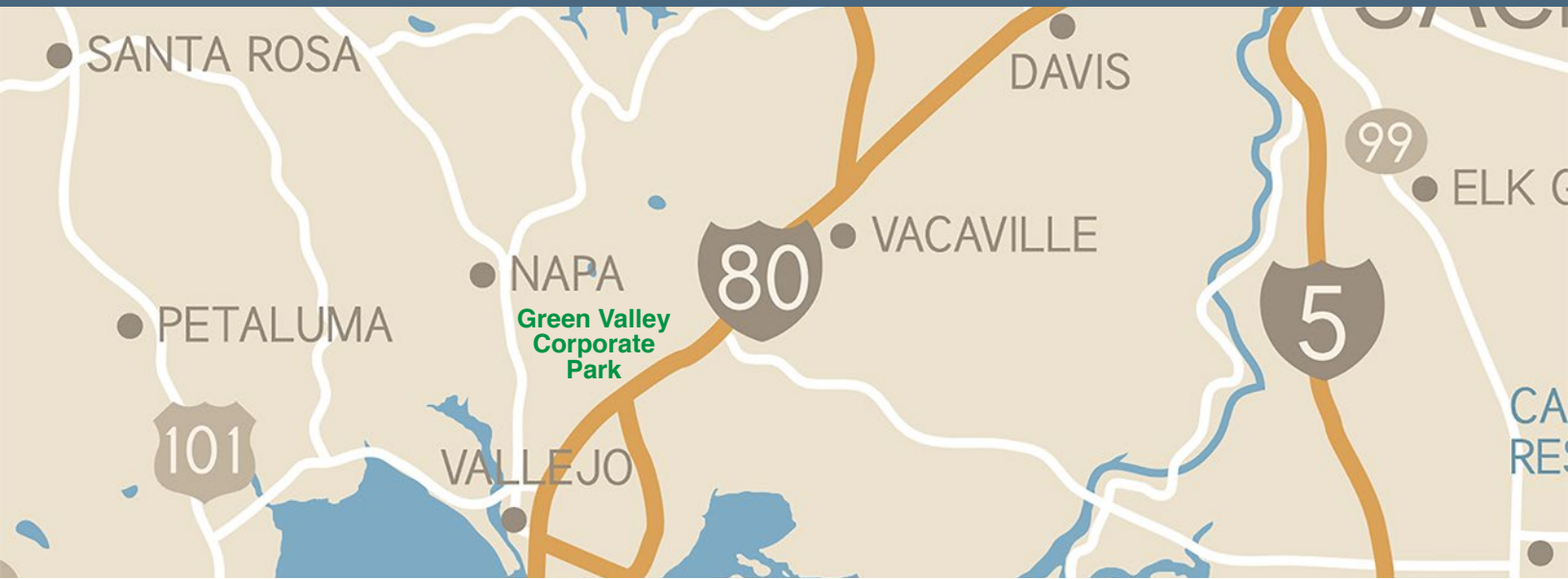
831.234.3023

chuck@shoemakercommercial.com

CalBRE# 01227041

4820 BUSINESS CENTER DRIVE

AREA MAP



SHOEMAKER
COMMERCIAL
REAL ESTATE

Chuck Griffen
Associate Sales Person
831.234.3023
chuck@shoemakercommercial.com
CalBRE# 01227041

Information presented in this proforma was provided by the Seller. Shoemaker Commercial makes no representation as to the accuracy of the information. Buyer should use diligence investigating the financial feasibility in making a purchase or lease by relying on his or her own professional advisors.