



THE
SAITO
COMPANY

FOR LEASE

Headliner Shopping Center

E. Barstow Avenue & N. First Street

Building Size: 1,000 – 6,000 sq. ft. Spaces Available
Multiple Retail Locations Available for Lease

View more listings at [saitocompany.com](https://www.saitocompany.com)

Location, demographics and plan information is supplied by sources believed to be reliable. However, the Mark Saito Company cannot guarantee its accuracy and make no warranty or representations as to its veracity. It is presented here with the possibility of errors, omissions, change of price, rental or other conditions, prior sale, lease or financing, or withdrawal without notice. We include projections, opinions, assumptions or estimates for example only and these may not represent current or future performance of the property. All inquiries about content should be directed to the broker (BRE LIC# 00701227) Mark Saito and the Mark Saito Company. All rights reserved.

Patrick Monreal

C 559.284.9028

E patrick@saitocompany.com

Mark Saito

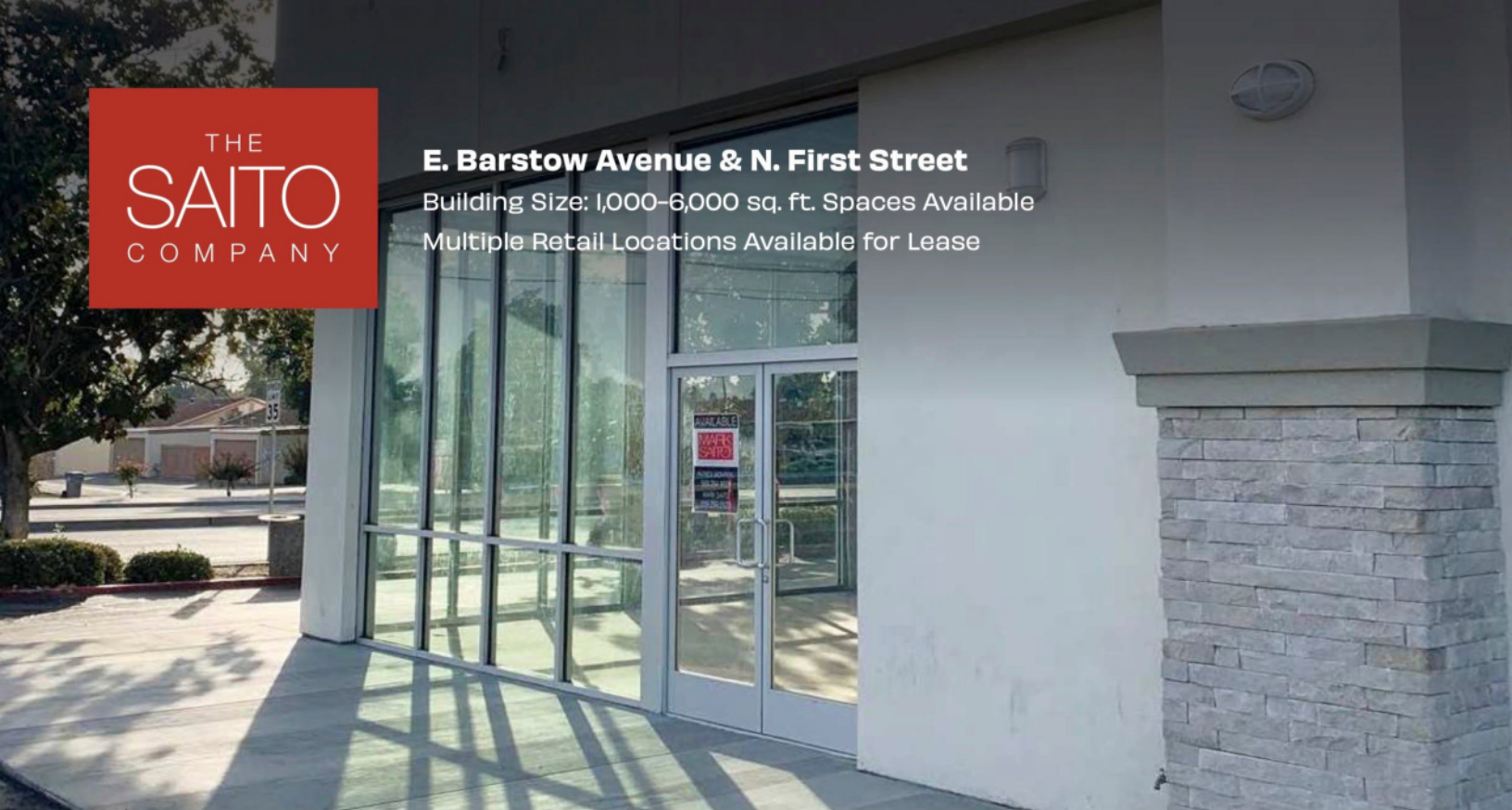
C 559.284.9028

E mark@saitocompany.com

E. Barstow Avenue & N. First Street

Building Size: 1,000-6,000 sq. ft. Spaces Available

Multiple Retail Locations Available for Lease



Headliner **Shopping Center**

The Headliner Shopping Center is located on the busy intersection of Barstow and First of which sees over 70,000 vehicles per day. Just blocks from major retailers such as, Fashion Fair Mall, Campus Pointe Shopping Center, and California State University of Fresno. This site includes restaurant and retail, accommodating to many businesses and providing excellent foot traffic.

View more listings at saitocompany.com

Location, demographics and plan information is supplied by sources believed to be reliable. However, the Mark Saito Company cannot guarantee its accuracy and make no warranty or representations as to its veracity. It is presented here with the possibility of errors, omissions, change of price, rental or other conditions, prior sale, lease or financing, or withdrawal without notice. We include projections, opinions, assumptions or estimates for example only and these may not represent current or future performance of the property. All inquiries about content should be directed to the broker (BRE LIC# 00701227) Mark Saito and the Mark Saito Company. All rights reserved.

Patrick Monreal

C 559.284.9028

E patrick@saitocompany.com

Mark Saito

C 559.284.9028

E mark@saitocompany.com

E. Barstow Avenue & N. First Street

Building Size: 1,000–6,000 sq. ft. Spaces Available

Multiple Retail Locations Available for Lease

Area **Demographics**



Traffic Counts

70,000+ Cars Per Day

Exposure for Barstow
and Marks Intersection



Populations

1 Mile: 21,167
2 Miles: 65,725
3 Miles: 138,463



Average Income

1 Mile: \$53,268
2 Miles: \$58,271
3 Miles: \$65,724

View more listings at saitocompany.com

Location, demographics and plan information is supplied by sources believed to be reliable. However, the Mark Saito Company cannot guarantee its accuracy and make no warranty or representations as to its veracity. It is presented here with the possibility of errors, omissions, change of price, rental or other conditions, prior sale, lease or financing, or withdrawal without notice. We include projections, opinions, assumptions or estimates for example only and these may not represent current or future performance of the property. All inquiries about content should be directed to the broker (BRE LIC# 00701227) Mark Saito and the Mark Saito Company. All rights reserved.

Patrick Monreal

C 559.284.9028

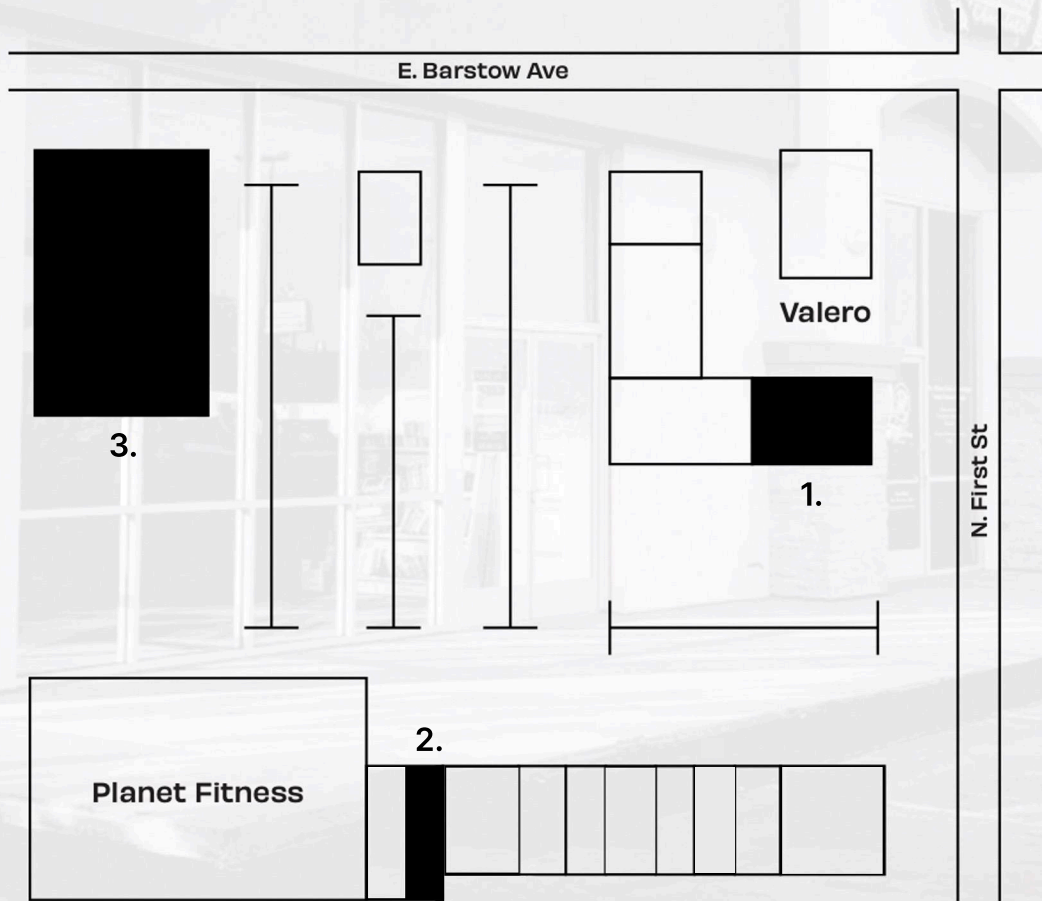
E patrick@saitocompany.com

Mark Saito

C 559.284.9028

E mark@saitocompany.com

Lease Options



Lease Options

- ① 2,000 SF ② 2,500 SF ③ Build to Suit

View more listings at saitocompany.com

Location, demographics and plan information is supplied by sources believed to be reliable. However, the Mark Saito Company cannot guarantee its accuracy and make no warranty or representations as to its veracity. It is presented here with the possibility of errors, omissions, change of price, rental or other conditions, prior sale, lease or financing, or withdrawal without notice. We include projections, opinions, assumptions or estimates for example only and these may not represent current or future performance of the property. All inquiries about content should be directed to the broker (BRE LIC# 00701227) Mark Saito and the Mark Saito Company. All rights reserved.

Patrick Monreal
C 559.284.9028
E patrick@saitocompany.com

Mark Saito
C 559.284.9028
E mark@saitocompany.com

E. Barstow Avenue & N. First Street

Building Size: 1,000–6,000 sq. ft. Spaces Available
Multiple Retail Locations Available for Lease



Property **Highlights**

✓ 2 Blocks from Fashion Fair Mall

✓ 70,000+ Cars Per Day Exposure

✓ High Population Area

✓ Located on a busy intersection

View more listings at [saitocompany.com](https://www.saitocompany.com)

Location, demographics and plan information is supplied by sources believed to be reliable. However, the Mark Saito Company cannot guarantee its accuracy and make no warranty or representations as to its veracity. It is presented here with the possibility of errors, omissions, change of price, rental or other conditions, prior sale, lease or financing, or withdrawal without notice. We include projections, opinions, assumptions or estimates for example only and these may not represent current or future performance of the property. All inquiries about content should be directed to the broker (BRE LIC# 00701227) Mark Saito and the Mark Saito Company. All rights reserved.

Patrick Monreal

C 559.284.9028

E patrick@saitocompany.com

Mark Saito

C 559.284.0123

E mark@saitocompany.com



THE
SAITO
COMPANY

f
ASHION
f
AIR

planet
fitness

FRESNO
STATE

Valero

Meet the **Neighbors**

- 📍 Close proximity to Fashion Fair Mall
- 📍 Close proximity to CSU, Fresno
- 📍 California 41 Highway Access

View more listings at saitocompany.com

Location, demographics and plan information is supplied by sources believed to be reliable. However, the Mark Saito Company cannot guarantee its accuracy and make no warranty or representations as to its veracity. It is presented here with the possibility of errors, omissions, change of price, rental or other conditions, prior sale, lease or financing, or withdrawal without notice. We include projections, opinions, assumptions or estimates for example only and these may not represent current or future performance of the property. All inquiries about content should be directed to the broker (BRE LIC# 00701227) Mark Saito and the Mark Saito Company. All rights reserved.

Patrick Monreal

C 559.284.9028

E patrick@saitocompany.com

Mark Saito

C 559.284.9028

E mark@saitocompany.com