

# LEASE

WIMBISH MIDTOWN PLAZA SHOPPING CENTER

2980 RIVERSIDE DRIVE

MACON, BIBB COUNTY, GEORGIA 31210



**MONTHLY LEASE RATE:**  
**\$2,900.00**

## LOCATION OVERVIEW

- Located in North Macon at the busy signalized intersection of Riverside Drive and Wimbish Road
- 5 miles from Downtown Macon

## TENANT LIST

Mikata Japanese Steakhouse  
Fitness Xtreme  
Coast to Coast Medical Transportation  
Wimbish Beauty Salon  
Twin Cuts Barber Shop  
Saving Animals From Euthanasia. Inc.

## PROPERTY OVERVIEW

- 2,050± SF Storefront Retail
- Former Bass Cleaners
- Average Daily Traffic Count: 23,900 VPD
- Plentiful asphalt paved parking
- Signage available on façade of building
- Zoned C4
- Landlord pays CAM

**ARTHUR P. BARRY III**  
**478.731.8000 Cell**  
**abarry@cbcworldwide.com**

**990 RIVERSIDE DRIVE • MACON, GA 31201 • 478.746.8171 • CBCMACON.COM**

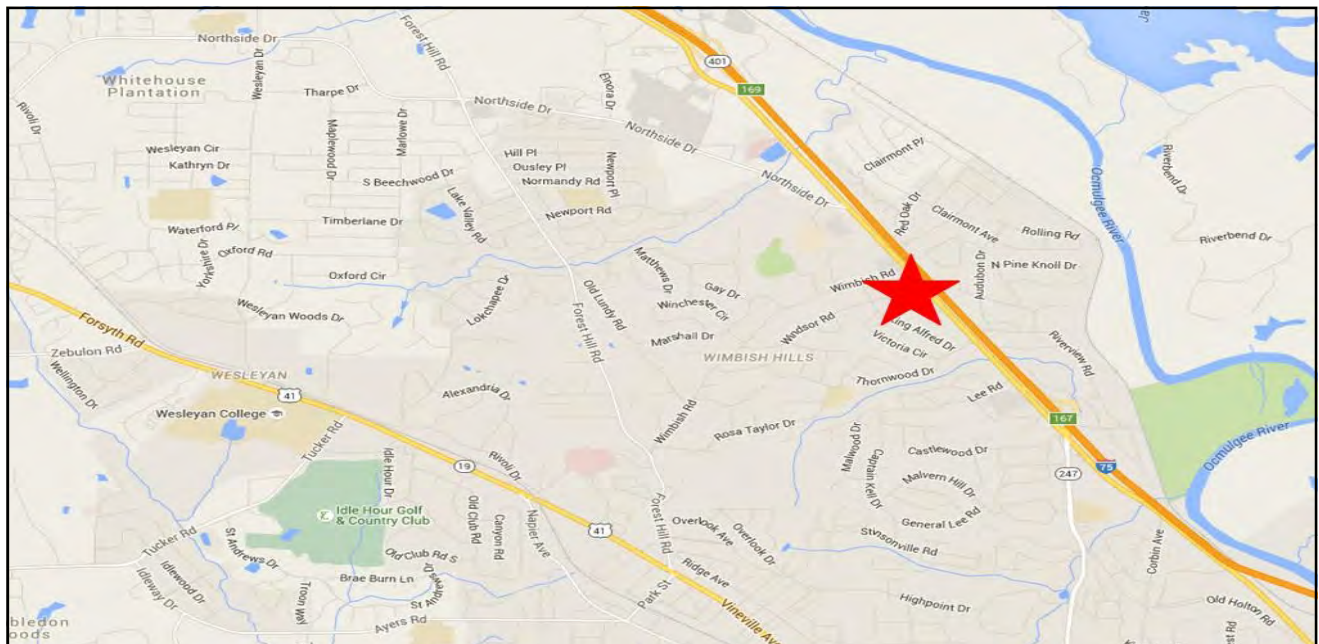


**COLDWELL BANKER**  
**COMMERCIAL**  
EBERHARDT & BARRY

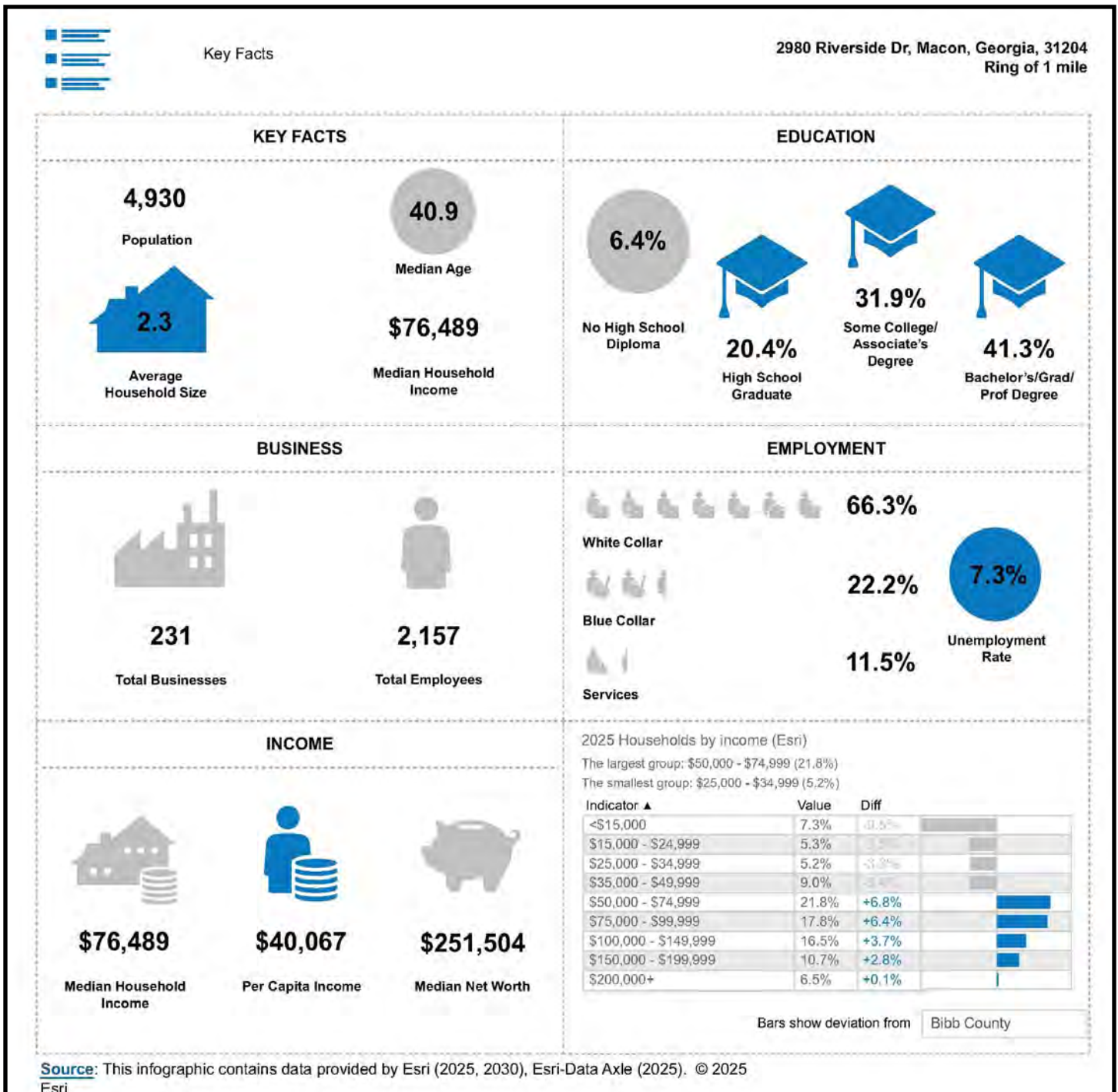
Revised 12/8/25

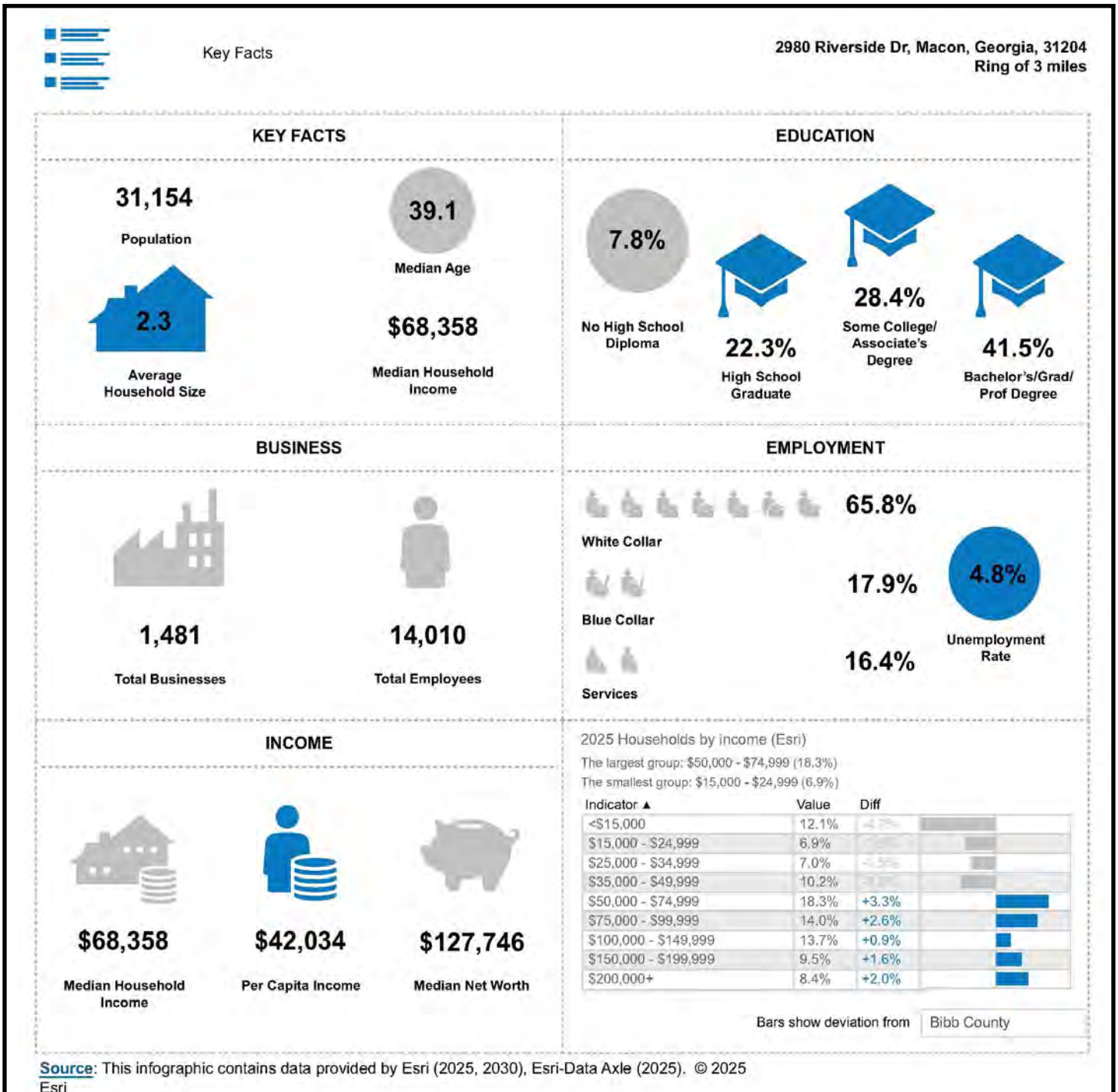


**MACON, BIBB COUNTY, GEORGIA 31210**











## Key Facts

2980 Riverside Dr, Macon, Georgia, 31204  
Ring of 5 miles

### KEY FACTS

82,694

Population



2.2

Average  
Household Size

38.0

Median Age

\$52,077

Median Household  
Income

### EDUCATION

11.1%

No High School  
Diploma



28.9%

High School  
Graduate



25.4%

Some College/  
Associate's  
Degree



34.6%

Bachelor's/Grad/  
Prof Degree

### BUSINESS



4,697

Total Businesses



51,765

Total Employees

### EMPLOYMENT



White Collar

64.1%



Blue Collar

16.4%



Services

19.5%



Unemployment  
Rate

### INCOME



\$52,077

Median Household  
Income



\$35,566

Per Capita Income



\$45,128

Median Net Worth

### 2025 Households by income (Esri)

The largest group: <\$15,000 (20.0%)

The smallest group: \$150,000 - \$199,999 (7.0%)

Indicator ▲	Value	Diff	
<\$15,000	20.0%	+3.2%	
\$15,000 - \$24,999	8.6%	-1.2%	
\$25,000 - \$34,999	8.6%	+0.1%	
\$35,000 - \$49,999	11.3%	-1.1%	
\$50,000 - \$74,999	15.0%	0	
\$75,000 - \$99,999	11.4%	0	
\$100,000 - \$149,999	10.4%	-2.4%	
\$150,000 - \$199,999	7.0%	-1.1%	
\$200,000+	7.7%	+1.3%	

Bars show deviation from Bibb County

Source: This infographic contains data provided by Esri (2025, 2030), Esri-Data Axle (2025). © 2025 Esri