

FOR SALE 119 Acre Ranch/Ag Property

5665 Campbell Rd Lompoc, CA



Campbell Road

The Offering

Lee & Associates is pleased to offer for sale the 119.91 acre ranch/agricultural property located just off Hwy 246 between Lompoc and Buellton in the Santa Rita Hills AVA of Santa Barbara County. The property is ideal for developing a sprawling ranch estate in the heart of wine country or growing your preferred varietal of crop.

Offered at \$3,500,000.

The Details

Address 5665 Campbell Road
Lompoc, CA 93436

APN 099-110-047

Size 119.91 Acres

Zoning AG-II-100

Structures 1x Home w/ Pool (+/- 3,000 Sq Ft)
1x Ranch Hand Quarters (+/- 450 Sq Ft)
1x Equipment Barn (+/- 3,000 Sq Ft)
1x Auxiliary Barn (+/- 1,150 Sq Ft)
1x Livestock Shed (+/- 600 Sq Ft)

*Structures have not been formally measured - sizes are approximations

Wells 1x Agricultural Well (~350gpm)
1x Domestic Well

For more information contact:

BRIAN BARSON, CCIM

Senior Vice President/Principal
(949) 724-4717
bbarson@lee-associates.com
CA DRE #01945282

TOM DAVIDSON

Broker Associate
(805) 588-777
tdavidson@lee-associates.com
CA DRE #00595846

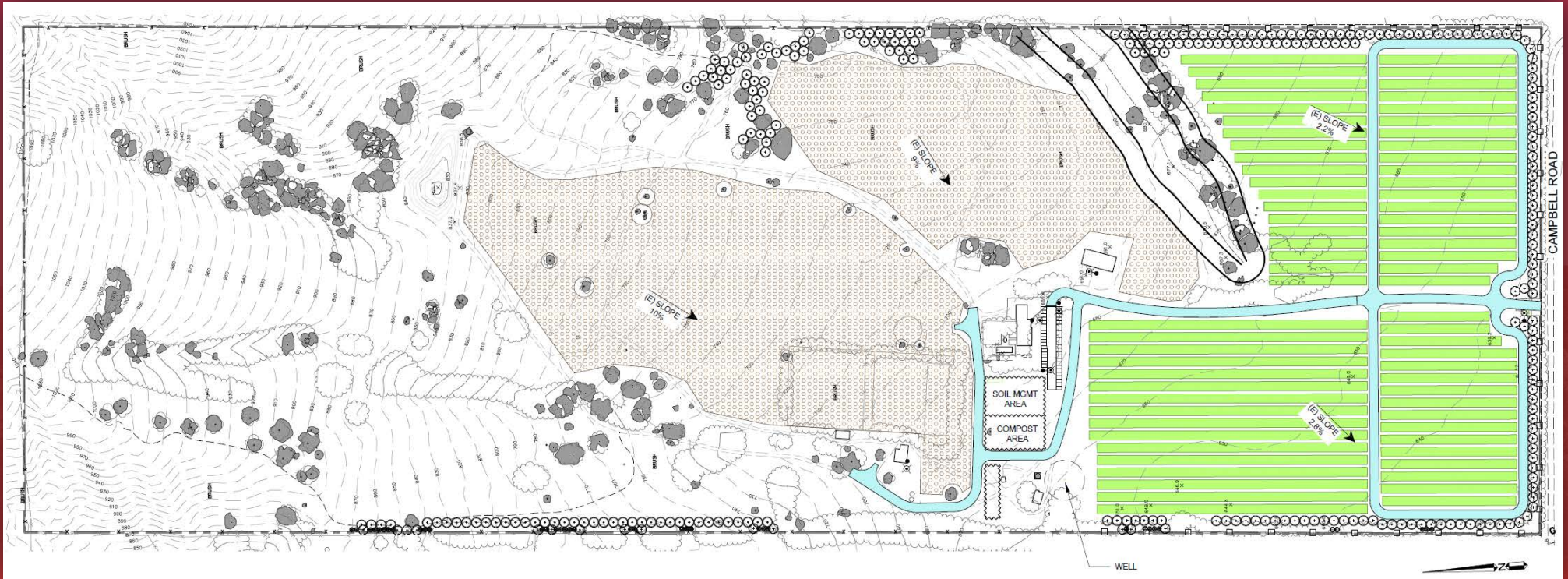


COMMERCIAL REAL ESTATE SERVICES

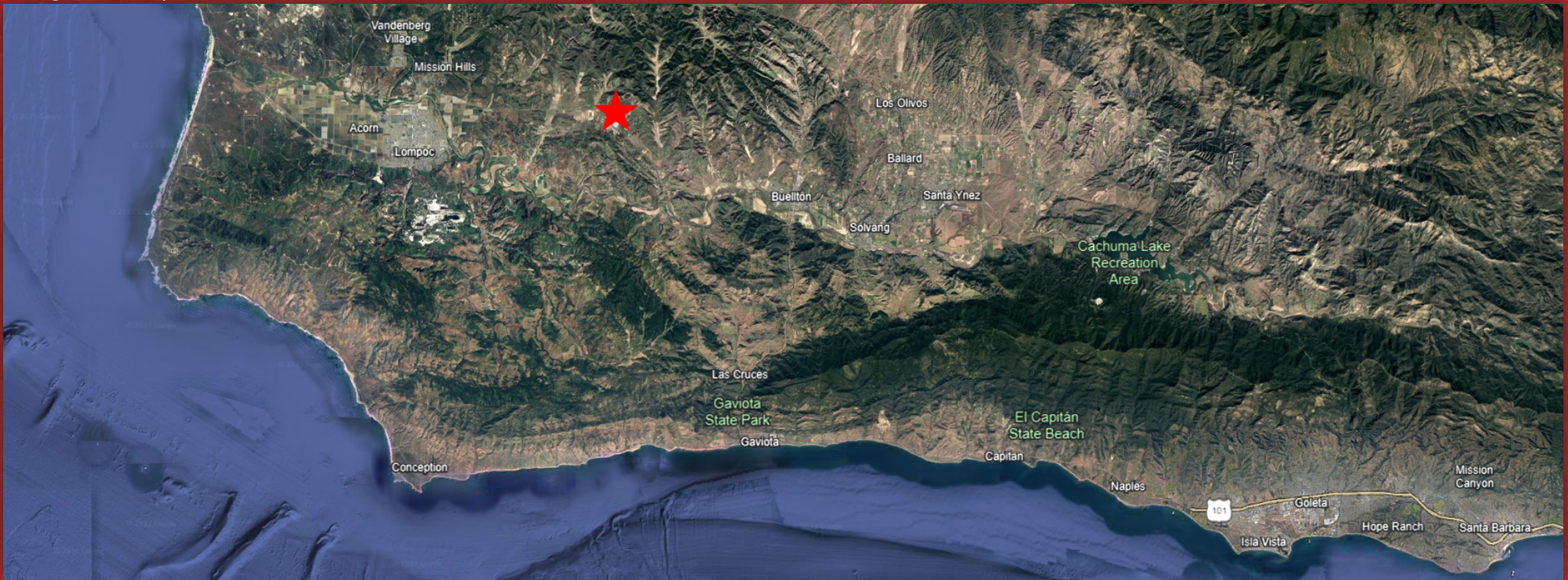
DISCLAIMER: The information contained herein has been obtained from the property owner or other third party and is provided to you without verification as to accuracy. We (Lee & Associates, its brokers, employees, agents, principals, officers, directors and affiliates) make no warranty or representation regarding the information, property, or transaction. You and your attorneys, advisors and consultants should conduct your own investigation of the property and transaction.



Prototypical Agricultural Site Plan



Regional Map















FOR SALE

119 Acre Ranch/Ag Property

5665 Campbell Rd Lompoc, CA



Brian Barson, CCIM
Senior Vice President/Principal
(949) 724-4717
bbarson@lee-associates.com
CA DRE #01945282



Tom Davidson
Associate Broker
(805) 588-7777
tdavidson@lee-associates.com
CA DRE #00595846



DISCLAIMER: The information contained herein has been obtained from the property owner or other third party and is provided to you without verification as to accuracy. We (Lee & Associates, its brokers, employees, agents, principals, officers, directors and affiliates) make no warranty or representation regarding the information, property, or transaction. You and your attorneys, advisors and consultants should conduct your own investigation of the property and transaction.