

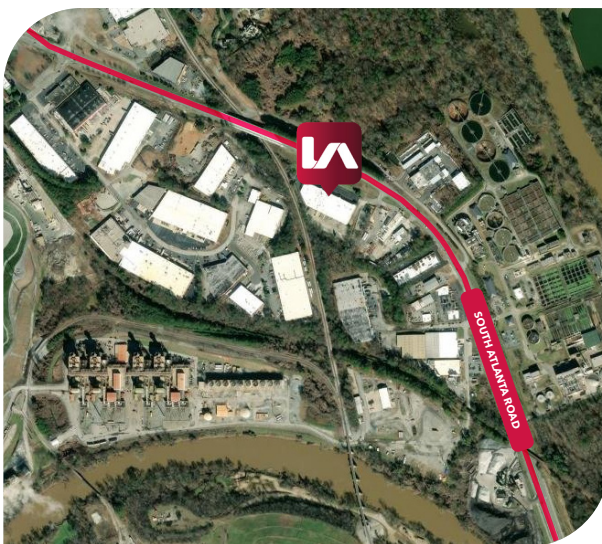
**FOR SUBLEASE**



**12,072 SF | 4938 S ATLANTA RD SE | ATLANTA, GA 30339**

## PROPERTY OVERVIEW

- The total building is 58,000 square feet with 12,072 square feet of sublease space available for immediate occupancy.
- Lease Expiration: 2/28/2027



Suite: 600

Total Available SF: 12,072

Warehouse SF: 9,278

Office SF: 2,794

Dock High Doors: 3

Drive In Doors: 1 ramped

Clear Height: 20'

Column Spacing: 40 x 40

Truck Court: 110'



### **TREY TUMLIN**

Director

ttumlin@lee-associates.com  
O: 404.442.2828

### **RICK TUMLIN, CCIM, SIOR**

Executive VP / Principal

rtumlin@lee-associates.com  
O: 404.442.2816

### **ELIZABETH KENNEDY**

Associate

ekennedy@lee-associates.com  
O: 404.781.2106

### **MICHAEL SUTTER, SIOR**

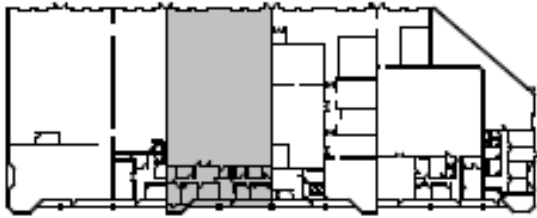
Executive VP / Principal

msutter@lee-associates.com  
O: 404.442.2804

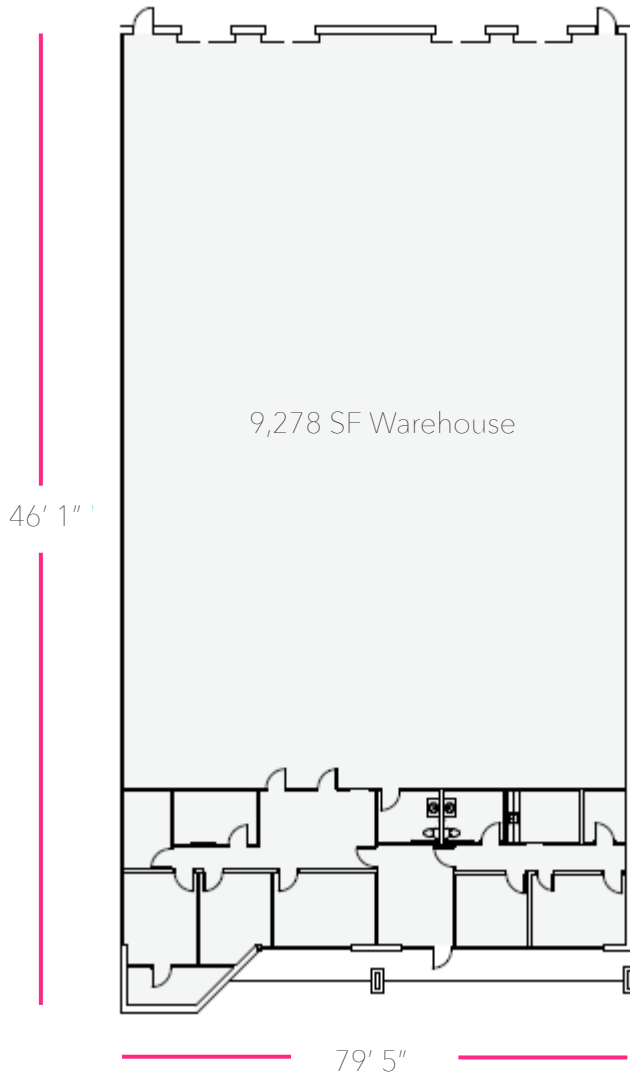


## Suite 600 | FOR SUBLEASE

12,072 SF | 4938 S ATLANTA RD SE | ATLANTA, GA 30339



DOCK HIGH DOORS



2,794 SF  
Office



All information furnished regarding property for sale, rental, or financing is from sources deemed reliable, but not warranty or representation is made to the accuracy thereof and same is submitted to errors, omissions, change of price, rental or other conditions prior to sale, lease, or financing or withdrawal without notice. No liability of any kind is to be imposed on the broker herein.



### TREY TUMLIN

Director

ttumlin@lee-associates.com  
O: 404.442.2828

### RICK TUMLIN, CCIM, SIOR

Executive VP / Principal

rtumlin@lee-associates.com  
O: 404.442.2816

### ELIZABETH KENNEDY

Associate

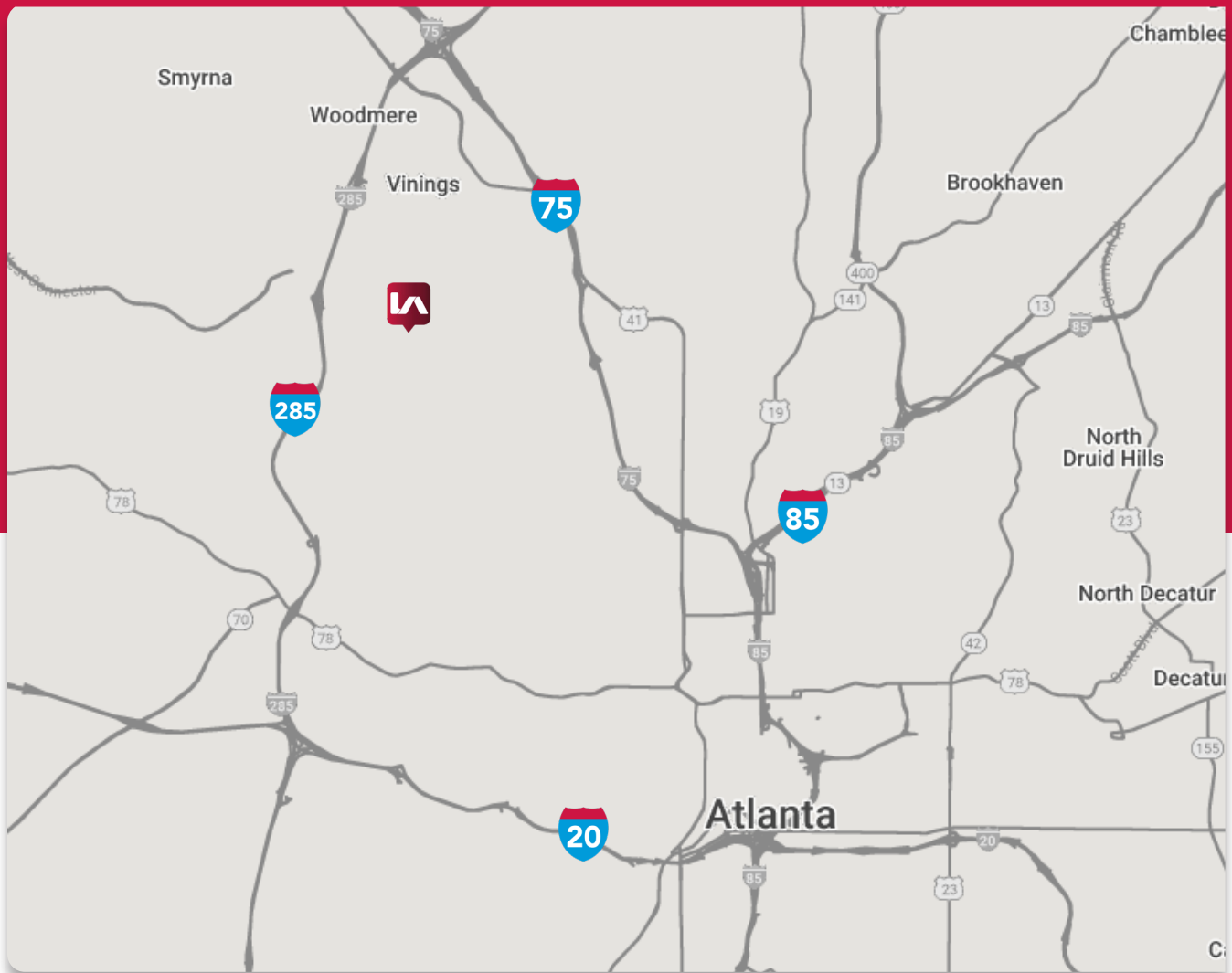
ekennedy@lee-associates.com  
O: 404.781.2106

### MICHAEL SUTTER, SIOR

Executive VP / Principal

msutter@lee-associates.com  
O: 404.442.2804

## LOCATION HIGHLIGHTS



### KEY ACCESS POINTS

I-285	1.8 miles
I-75	2.9 miles
I-85	6 miles
I-20	6.4 miles

### KEY TRANSPORTATION

FedEx Freight	2.6 miles
Norfolk Southern, Inman Yard:	3 miles
CSX, Howell Yard:	4.3 miles
UPS:	5.3 miles



#### **TREY TUMLIN**

Director  
ttumlin@lee-associates.com  
O: 404.442.2828

#### **RICK TUMLIN, CCIM, SIOR**

Executive VP / Principal  
rtumlin@lee-associates.com  
O: 404.442.2816

#### **ELIZABETH KENNEDY**

Associate  
ekennedy@lee-associates.com  
O: 404.781.2106

#### **MICHAEL SUTTER, SIOR**

Executive VP / Principal  
msutter@lee-associates.com  
O: 404.442.2804