



3131 Princeton Pike

LAWRENCEVILLE, NJ

Features

- New ownership
- Brand new renovations of lobby and restrooms
- Exterior façade work to be done
- New landscaping plan in place

Availabilities

BUILDING 4:

- 2nd floor: 7,360 SF (available 12/1/25)
- 2nd floor: 2,465 SF
- 2nd floor: 3,347 SF
- 2nd floor: 3,449 SF
- 2nd floor: 2,982 SF (max contiguous 7,500 SF)

BUILDING 5:

- 1st floor: 2,290 SF
- 1st floor: 609 SF
- 2nd floor: 3,430 SF

BUILDING 6:

- 1st floor: 2,406 SF
- 1st floor: 1,510 SF
- 1st floor: 844 SF

For information, please contact:

Steve Tolkach

t 609.922.8357

stephen.tolkach@nmrk.com

Rob Loderstedt

t 973-998-1093

robert.loderstedt@nmrk.com

NEWMARK

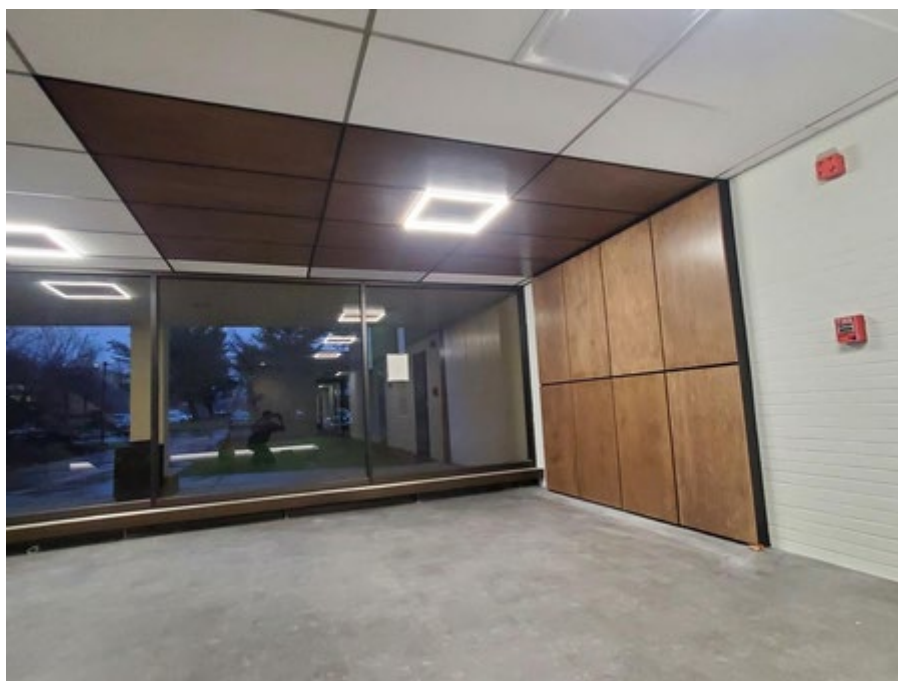
One Tower Center Boulevard, Suite 1201, East Brunswick, NJ 08816

nmrk.com

Newmark, Licensed Real Estate Broker. The information contained herein has been obtained from sources deemed reliable but has not been verified and no guarantee, warranty or representation, either express or implied, is made with respect to such information. Terms of sale or lease and availability are subject to change or withdrawal without notice.

BUILDING PHOTOS

3131 Princeton Pike



One Tower Center Boulevard, Suite 1201, East Brunswick, NJ 08816

nmrk.com

Newmark, Licensed Real Estate Broker. The information contained herein has been obtained from sources deemed reliable but has not been verified and no guarantee, warranty or representation, either express or implied, is made with respect to such information. Terms of sale or lease and availability are subject to change or withdrawal without notice.

NEWMARK