

SPACE FEATURES:

- Large 2-Story Professional Office Space on North Street
- Highly Trafficked Location Just Outside of Downtown Nacogdoches
- High Density Office
- Ample Parking
- Great Signage and Visibility



FOR MORE INFORMATION

PLEASE CONTACT:

Jonathan Dunn
713-319-4467
jdunn@cpre.com

CPRE Commercial
3505 North Street
Nacogdoches, TX 75965
(936)564-2622

[www.commercial.cpre.com/
properties-lease.php](http://www.commercial.cpre.com/properties-lease.php)

PREMISES:
4,550 SF

AVAILABILITY:
Immediate

LEASE TERM:
Negotiable

MODIFIED GROSS RENTAL RATE:
\$10.15/SF/YR (\$3,850.00/month)

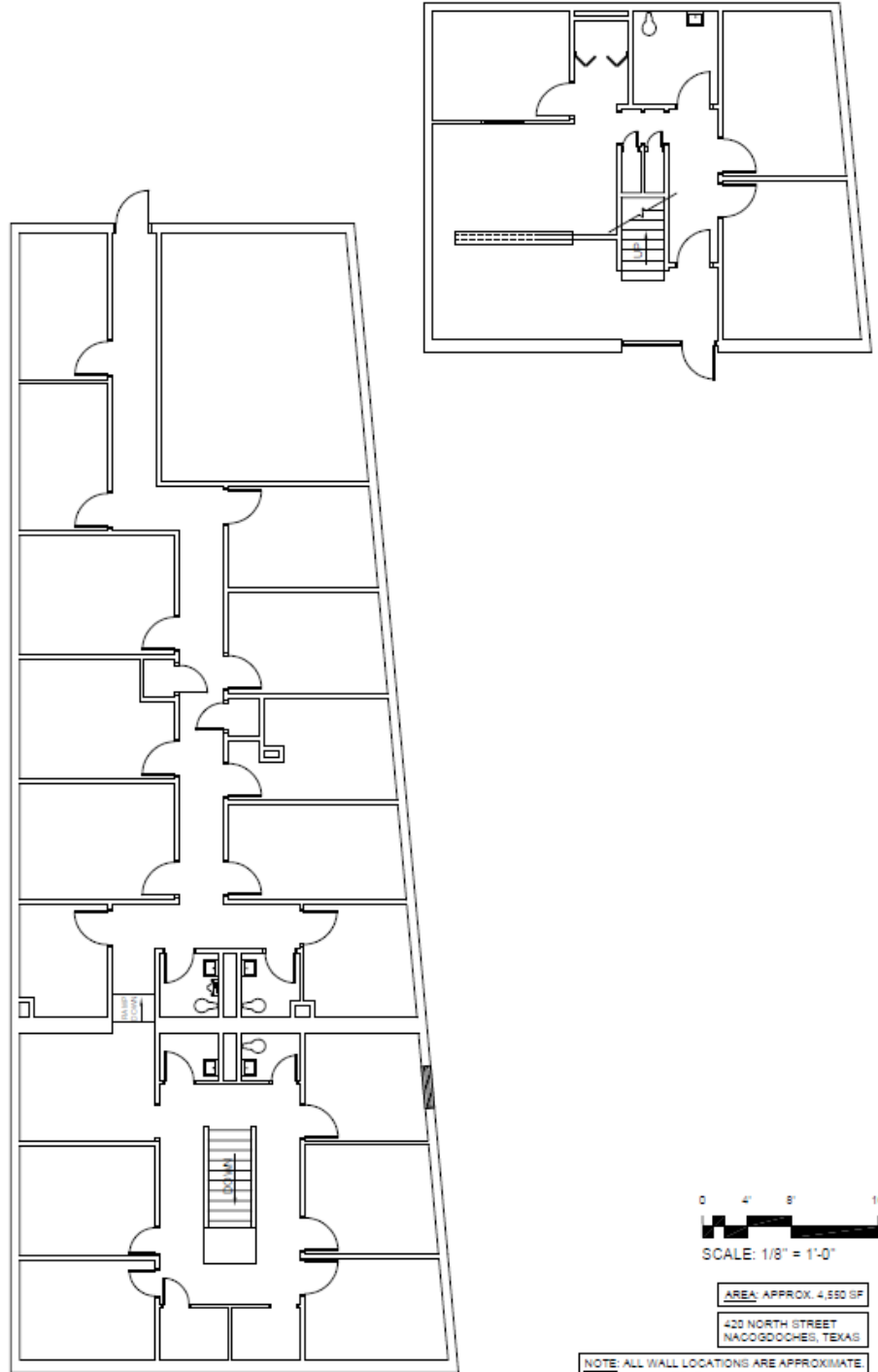
PARKING:
Ample Surface Spaces Available

LAYOUT:
First Floor: Reception, (1) Office and Supply Closet, (1) Restroom, (2) Meeting Rooms
Second Floor: (13) Private Offices, (5) Storage Closets, (1) Breakroom, (4) Restrooms

FOR LEASE

420 North Street - Nacogdoches, TX

CPRE
COMMERCIAL

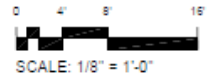


**FOR MORE
INFORMATION
PLEASE CONTACT:**

Jonathan Dunn
713-319-4467
jdunn@cpre.com

CPRE Commercial
3505 North Street
Nacogdoches, TX 75965
(936)564-2622

[www.commercial.cpre.com/
properties-lease.php](http://www.commercial.cpre.com/properties-lease.php)



AREA: APPROX. 4,580 SF

420 NORTH STREET
NACOGDOCHES, TEXAS

NOTE: ALL WALL LOCATIONS ARE APPROXIMATE.
WALL THICKNESSES ARE UNKNOWN.

2026 CPRE Commercial This information has been obtained from sources deemed to be reliable. We have not verified it and make no guarantee, warranty or representation about it. Any projections, assumptions or estimates used are for example only and do not represent the current or future performance of the property. You and your advisors should conduct a careful, independent investigation of the property to determine to your satisfaction the suitability of the property for your needs. Photos herein are the property of their respective owners and use of these images without the express written consent of the owner is prohibited.