

FOR LEASE



MEDICAL OR PROFESSIONAL

6943 OAK FOREST DRIVE • OLIVE BRANCH, MS 38654

OFFERING SUMMARY

Available SF: 1,100 SF +/-

Building SF: 3,486 SF +/-

Lease Rate: \$2,300 per month (Mod Gross)

Lease Term: 5 Years

Lot Size: 0.75 Acres

Year Built: 2005

Zoning: O



RHODES THOMPSON
Commercial Agent
(662) 892-4000
rhodesthompson@outlook.com
Mississippi

(901) 286-6200 - Main Office
(901) 833-8000 - Cell Phone

AVAILABLE

Suite #	Rate per Month	Size	Lease Type
A	\$2,300.00	1,100 SF +/-	Modified Gross

PROPERTY DESCRIPTION

Are you searching for your next office space? Look no further than this 1,100 SF office space that will be available on 04/01/2025. The suite offers private offices, a reception area, break area and more! Additionally, this space has great visibility just south of Goodman Road. Give us a call today to schedule a property tour and possibly make this space yours!

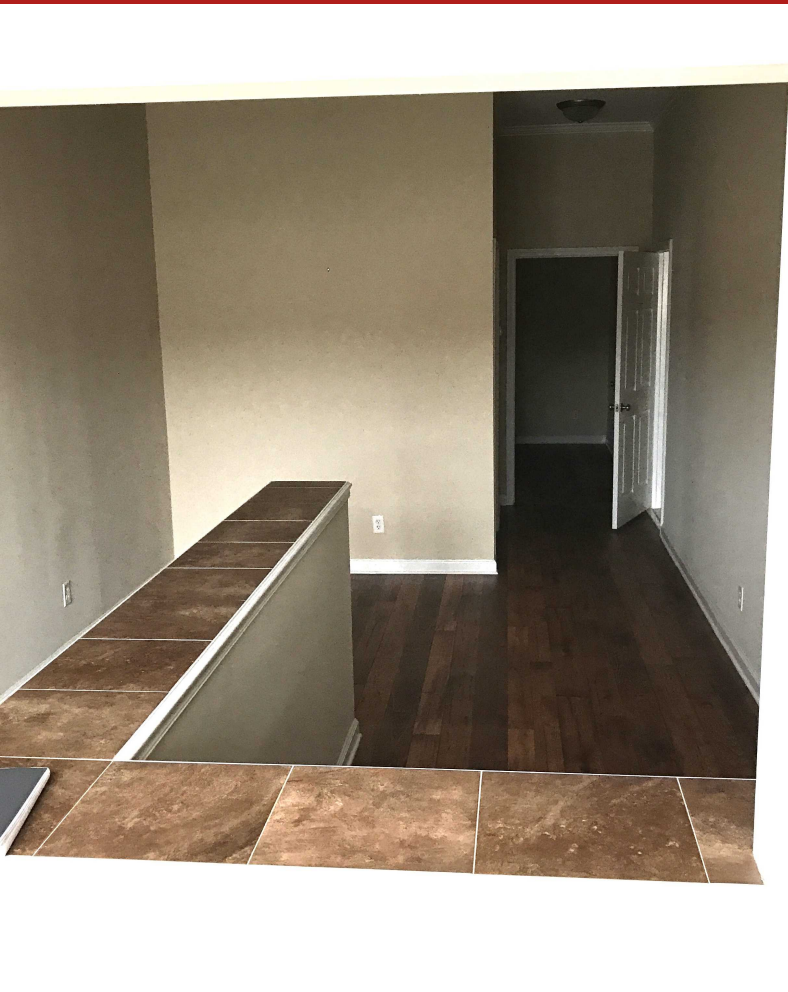
PROPERTY HIGHLIGHTS

Great office space offering private offices; suitable for medical or professional staff
Great visibility just off of Goodman Road
Traffic count: 35,000 cars per day on Goodman Road
Please note: An additional fee of \$90 per month will be added to the lease to cover water and maintenance costs.



PROPERTY PHOTOS

6943 Oak Forest Drive, Olive Branch, MS 38654




BUSINESS MAP


6943 Oak Forest Drive, Olive Branch, MS 38654





 Target


DUNKIN'

 Renasant Bank

 Planters Bank

 Chicken Salad Chick

 Cadence Bank

 Panera Bread


 USPS

 Petco

 Starbucks

 OB Fire Dept

Walmart

 Quality Inn

 Bank

 McDonald's

 Zaxby's