

1,500 - 5,972 SF

Office Property For Lease



BROWN
COMMERCIAL GROUP, INC.

165 N. LAKEWOOD ROAD, LAKE IN THE HILLS, IL 60156

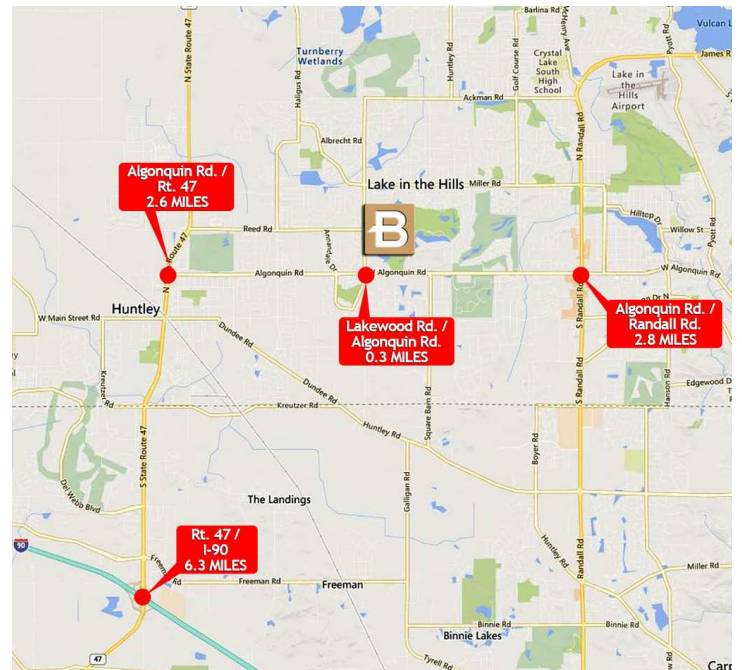


LOCATION DESCRIPTION

Newer office complex ideal for medical use, professional offices. Well positioned between Rt. 47 and Randall Rd. corridors.

PROPERTY OVERVIEW

- 11,826 SF Multi-Tenant Office Building
- Lake Point Professional Medical Center with current medical offices including: Urban Care Internal Medicine & Pediatrics, Athletico Physical Therapy, Illinois Gastroenterology, and Northern IL Foot & Ankle (750 Patients a Month).
- Total Patient Visits Per Month - 4,000
- 1.6 Miles from Northwestern Medicine Huntley Hospital Medical Complex
- Spaces Available From 1,500 SF to 5,972 SF
- Private Entrances
- Marquee and Monument Signage Available
- Buildout Allowance
- Lease Rate: Subject to Offer



DAN BROWN, SIOR

847.758.9200 x302

DBROWN@BROWNCOMMERCIAL.COM

JIM PIETRAROSSO

847.758.9200 x314

JIMP@BROWNCOMMERCIAL.COM

BROWNCOMMERCIAL.COM

// 1400 E. HIGGINS RD. SUITE A, ELK GROVE VILLAGE, IL 60007

// 847.758.9200

No warranties or representations is made as to the accuracy of the foregoing information. Terms and availability are subject to changes or withdrawal without notice

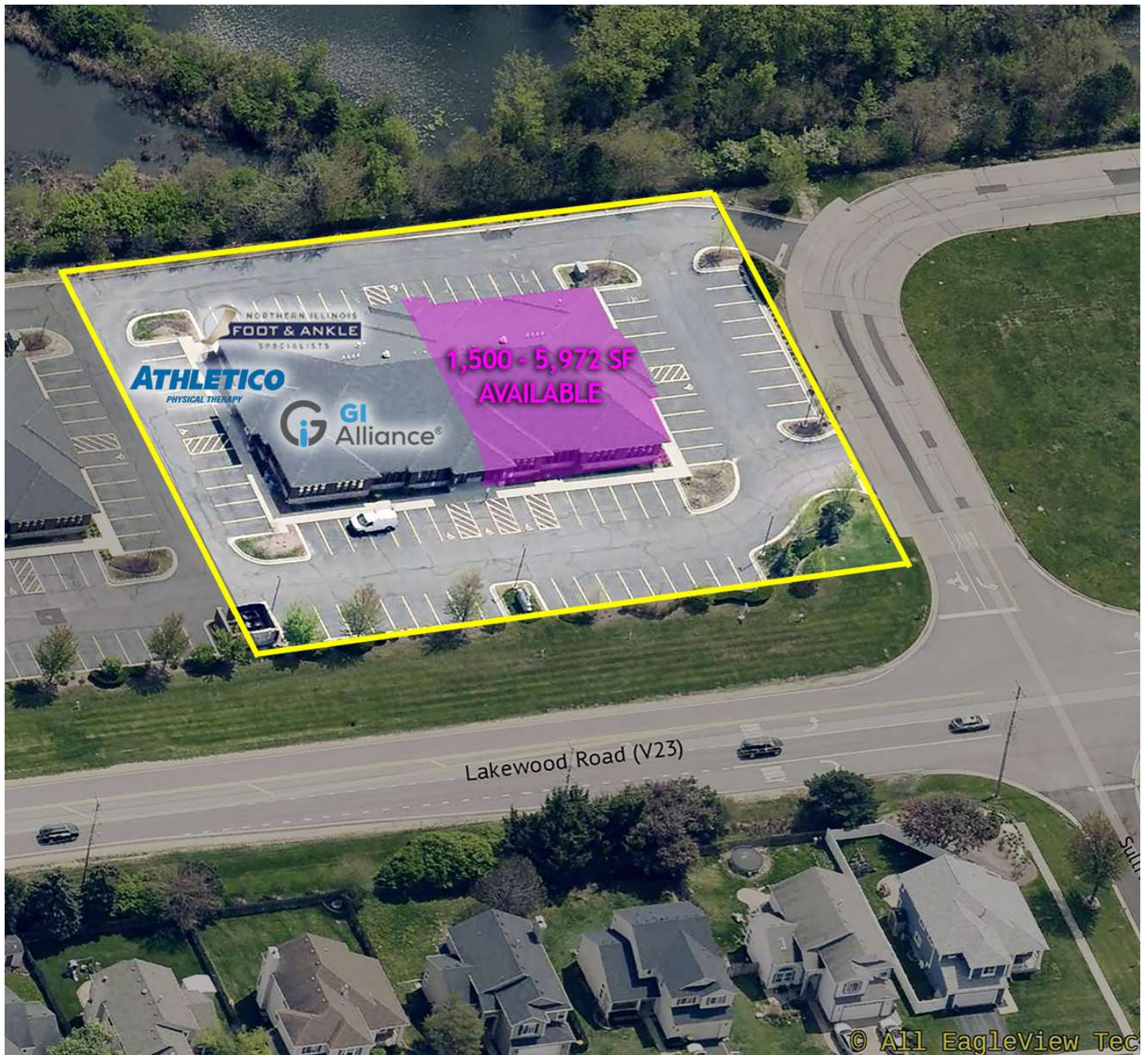
1,500 - 5,972 SF

Office Property For Lease



BROWN
COMMERCIAL GROUP, INC.

165 N. LAKEWOOD ROAD, LAKE IN THE HILLS, IL 60156



DAN BROWN, SIOR

847.758.9200 x302

DBROWN@BROWNCOMMERCIAL.COM

JIM PIETRAROSSO

847.758.9200 x314

JIMP@BROWNCOMMERCIAL.COM

BROWNCOMMERCIAL.COM

//

1400 E. HIGGINS RD. SUITE A, ELK GROVE VILLAGE, IL 60007

//

847.758.9200

No warranties or representations is made as to the accuracy of the foregoing information. Terms and availability are subject to changes or withdrawal without notice

1,500 - 5,972 SF

Office Property For Lease



BROWN
COMMERCIAL GROUP, INC.

165 N. LAKEWOOD ROAD, LAKE IN THE HILLS, IL 60156



DAN BROWN, SIOR

847.758.9200 x302

DBROWN@BROWNCOMMERCIAL.COM

JIM PIETRAROSSO

847.758.9200 x314

JIMP@BROWNCOMMERCIAL.COM

BROWNCOMMERCIAL.COM

//

1400 E. HIGGINS RD. SUITE A, ELK GROVE VILLAGE, IL 60007

//

847.758.9200

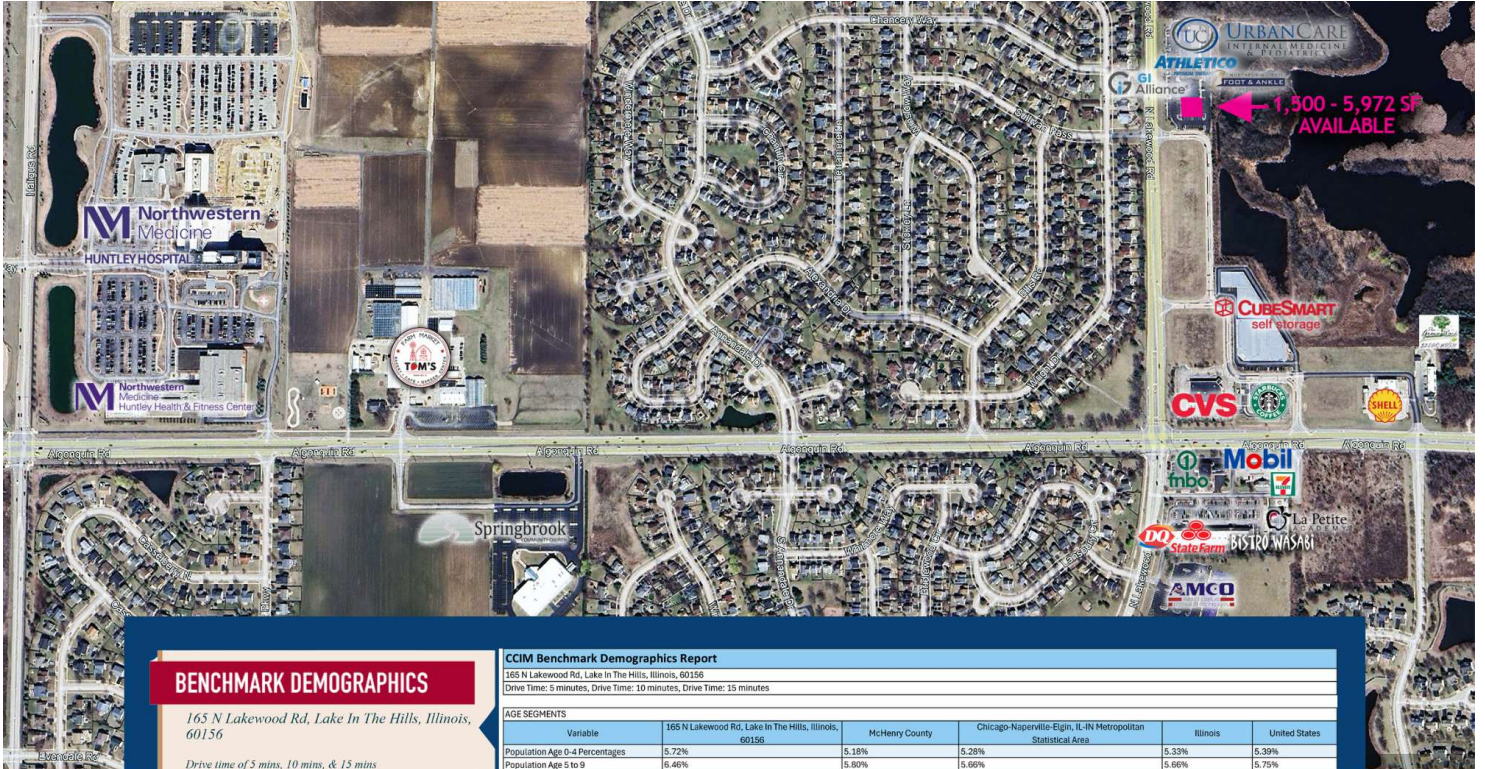
No warranties or representations is made as to the accuracy of the foregoing information. Terms and availability are subject to changes or withdrawal without notice

1,500 - 5,972 SF Office Property For Lease



BROWN
COMMERCIAL GROUP, INC.

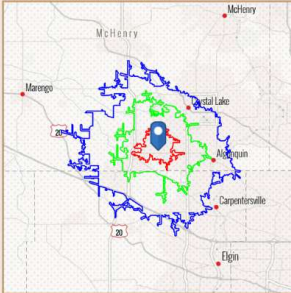
165 NORTH LAKEWOOD ROAD, LAKE IN THE HILLS, IL 60156



BENCHMARK DEMOGRAPHICS

165 N Lakewood Rd, Lake In The Hills, Illinois, 60156

Drive time of 5 mins, 10 mins, & 15 mins



Based on ideas by Gary M. Ralston, CCIM, SIOR, CPM, CRE, CLS, CDP, CRX, FRICS

Source: This infographic contains data provided by Esri (2025, 2030), Esri-Data Axle (2025)

THE CCIM INSTITUTE



CCIM Benchmark Demographics Report

165 N Lakewood Rd, Lake In The Hills, Illinois, 60156
Drive Time: 5 minutes, Drive Time: 10 minutes, Drive Time: 15 minutes

Variable	165 N Lakewood Rd, Lake In The Hills, Illinois, 60156	McHenry County	Chicago-Naperville-Evan, IL-IN Metropolitan Statistical Area	Illinois	United States
AGE SEGMENTS					
Population Age 0-4 Percentages	5.72%	5.18%	5.28%	5.33%	5.39%
Population Age 5 to 9	6.46%	5.80%	5.66%	5.66%	5.75%
Population Age 10 to 14	7.16%	6.17%	5.90%	5.96%	5.98%
Population Age 15 to 19	7.64%	6.23%	6.32%	6.36%	6.47%
Population Age 20 to 34	20.47%	18.23%	21.25%	20.63%	20.33%
Population Age 35 to 54	27.71%	25.60%	26.09%	25.50%	25.20%
Population Age 55 to 74	21.37%	25.44%	22.25%	22.84%	22.82%
Population Age 75+	3.41%	7.33%	7.27%	7.66%	8.06%
HOUSEHOLD INCOME					
Variable	165 N Lakewood Rd, Lake In The Hills, Illinois, 60156	McHenry County	Chicago-Naperville-Evan, IL-IN Metropolitan Statistical Area	Illinois	United States
<\$15,000	2.4%	4.1%	7.9%	8.6%	8.3%
\$15,000 - \$24,999	0.8%	3.0%	4.6%	5.3%	5.9%
\$25,000 - \$34,999	2.3%	3.6%	5.4%	6.0%	6.3%
\$35,000 - \$49,999	3.2%	8.5%	8.6%	9.6%	9.8%
\$50,000 - \$74,999	11.2%	14.3%	14.5%	15.2%	15.6%
\$75,000 - \$99,999	9.9%	13.0%	11.9%	12.3%	12.5%
\$100,000 - \$149,999	24.0%	22.4%	19.0%	18.6%	17.6%
\$150,000 - \$199,999	17.6%	13.4%	11.2%	10.2%	9.8%
\$200,000+	28.8%	17.5%	16.9%	14.2%	14.0%
KEY FACTS					
Variable	165 N Lakewood Rd, Lake In The Hills, Illinois, 60156	McHenry County	Chicago-Naperville-Evan, IL-IN Metropolitan Statistical Area	Illinois	United States
2025 Total Population	24,136	310,506	9,196,378	12,439,592	339,887,819
2025 Total Daytime Population	15,284	265,585	9,240,802	12,387,029	338,211,372
2025 Employed Civilian Pop 16+	14,972	173,588	4,927,857	6,454,763	167,838,539
2025 Total Households	7,709	119,016	3,854,999	5,045,606	132,422,816
2025 Average Household Size	3.13	2.59	2.48	2.41	2.50
2025 Median Age	37.2	41.6	39.1	39.7	39.6
HOUSING FACTS					
Variable	165 N Lakewood Rd, Lake In The Hills, Illinois, 60156	McHenry County	Chicago-Naperville-Evan, IL-IN Metropolitan Statistical Area	Illinois	United States
2025 Median Home Value	350,818	334,802	341,101	286,487	370,578
2025 Owner Occupied HUs: Percent	91.4%	81.9%	64.3%	66.2%	64.2%
2025 Renter Occupied HUs: Percent	8.6%	18.2%	35.7%	33.9%	35.8%
2025 Total Housing Units	7,839	124,524	3,839,346	5,505,852	148,800,552
INCOME FACTS					
Variable	165 N Lakewood Rd, Lake In The Hills, Illinois, 60156	McHenry County	Chicago-Naperville-Evan, IL-IN Metropolitan Statistical Area	Illinois	United States
2025 Median Household Income	\$141,364	\$105,276	\$92,735	\$84,176	\$81,624
2025 Per Capita Income	\$52,641	\$49,927	\$51,036	\$47,720	\$45,360
2025 Median Net Worth	\$746,971	\$473,765	\$269,663	\$250,896	\$228,144

Source: This infographic contains data provided by Esri (2025), Esri-Data Axle (2025).

DAN BROWN, SIOR

847.758.9200 x302

DBROWN@BROWNCOMMERCIAL.COM

JIM PIETRAROSSO

847.758.9200 x314

JIMP@BROWNCOMMERCIAL.COM

BROWNCOMMERCIAL.COM

// 1400 E. HIGGINS RD. SUITE A, ELK GROVE VILLAGE, IL 60007

// 847.758.9200

No warranties or representations is made as to the accuracy of the foregoing information. Terms and availability are subject to changes or withdrawal without notice