

The Village of Woodhaven

 [View Drone Video](#)

19850 West Rd, Woodhaven, MI 48183 (Space A)
22753 Allen Rd, Woodhaven, MI 48183 (Space B)
19410 West Rd, Woodhaven, MI 48183 (Space C)

Three Spaces Available including Two Endcap Opportunities



Property Highlights

- + Three spaces available for lease including two endcap opportunities
- + Located in the Village of Woodhaven Shopping Center at the NEC of Allen Road and West Road
- + Traffic counts exceeding 24,000 vehicles per day on Allen Road and 31,000 vehicles per day on West Road
- + Join tenants Ashley, X-Golf, Hand & Stone, Sola Salons, Panera, Panda Express, Red Olive and more
- + Directly across the street from Target, Walmart, Meijer, The Home Depot, ALDI, Marshall's, Planet Fitness, and many more
- + Lease Rates:

	Base Rent	NNN Charges
Space A	\$25.00	\$4.56
Space B	\$25.00	\$4.56
Space C	\$35.00	\$9.73

Macro Aerial



Micro Aerial

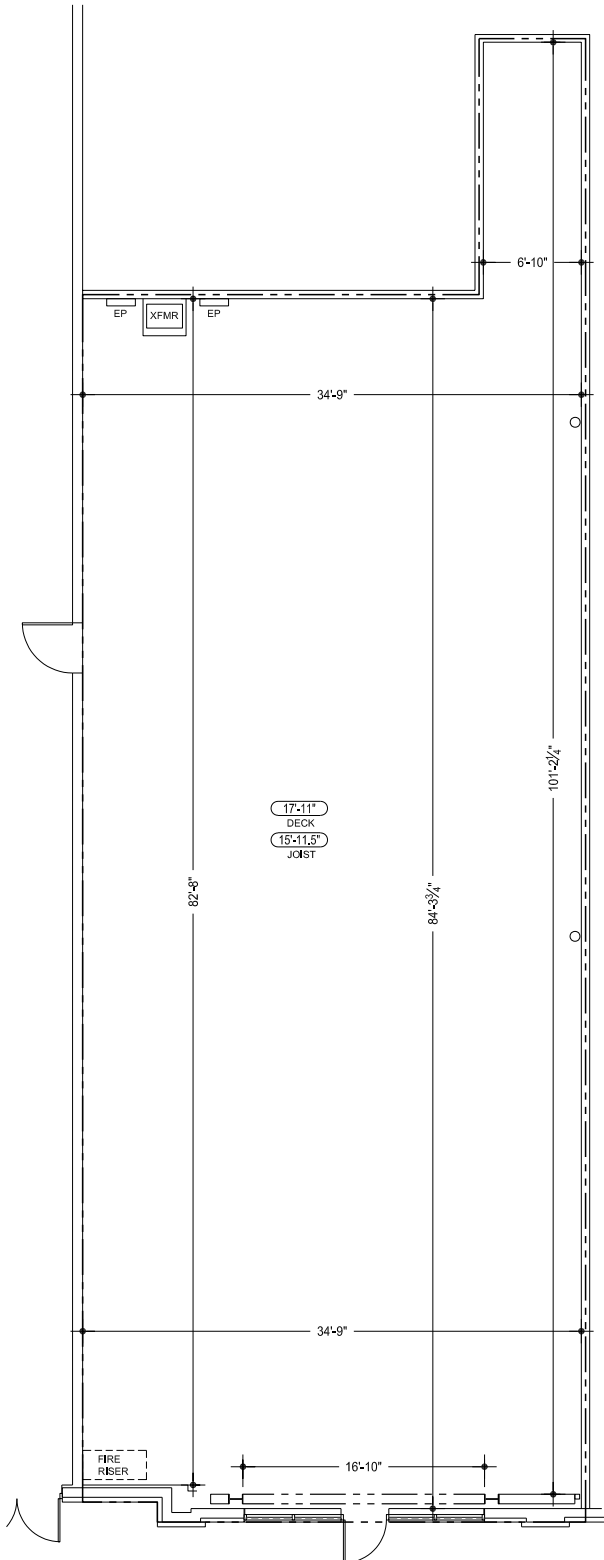


2024 Demographics	1 Mile	3 Miles	5 Miles
Population	5,451	57,860	140,105
Number of Households	2,568	25,493	61,758
Average Household Size	2.16	2.34	2.35
Average Household Income	\$102,976	\$100,814	\$101,282
Daytime Population	7,941	58,804	134,075

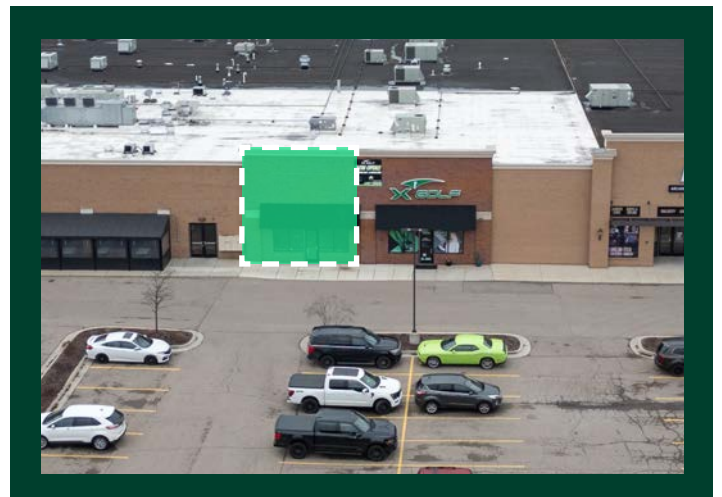
Site Plan



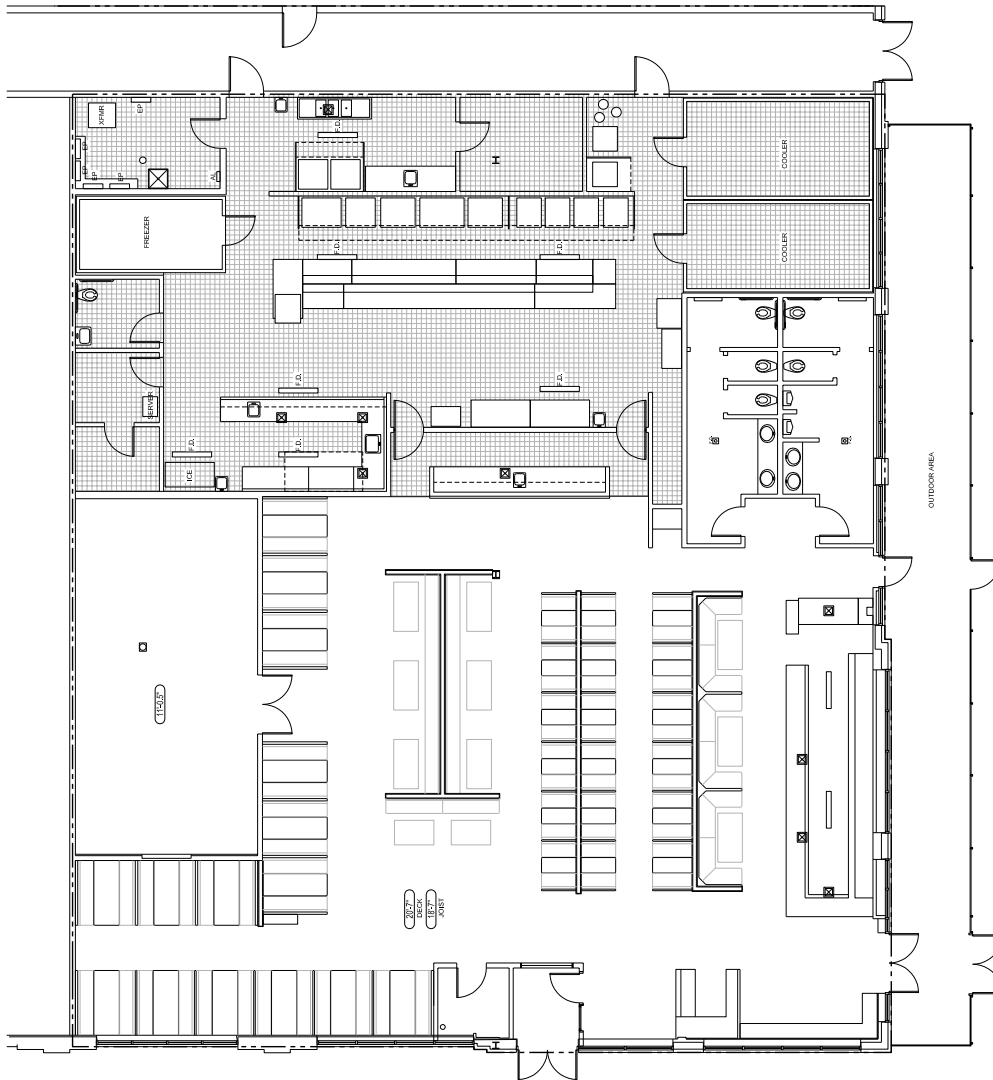
Space A: 19850 West Rd



- 3,118 SF Available
- Lease Rate: \$25.00 PSF NNN
- Operating Expenses: \$4.56 NNN



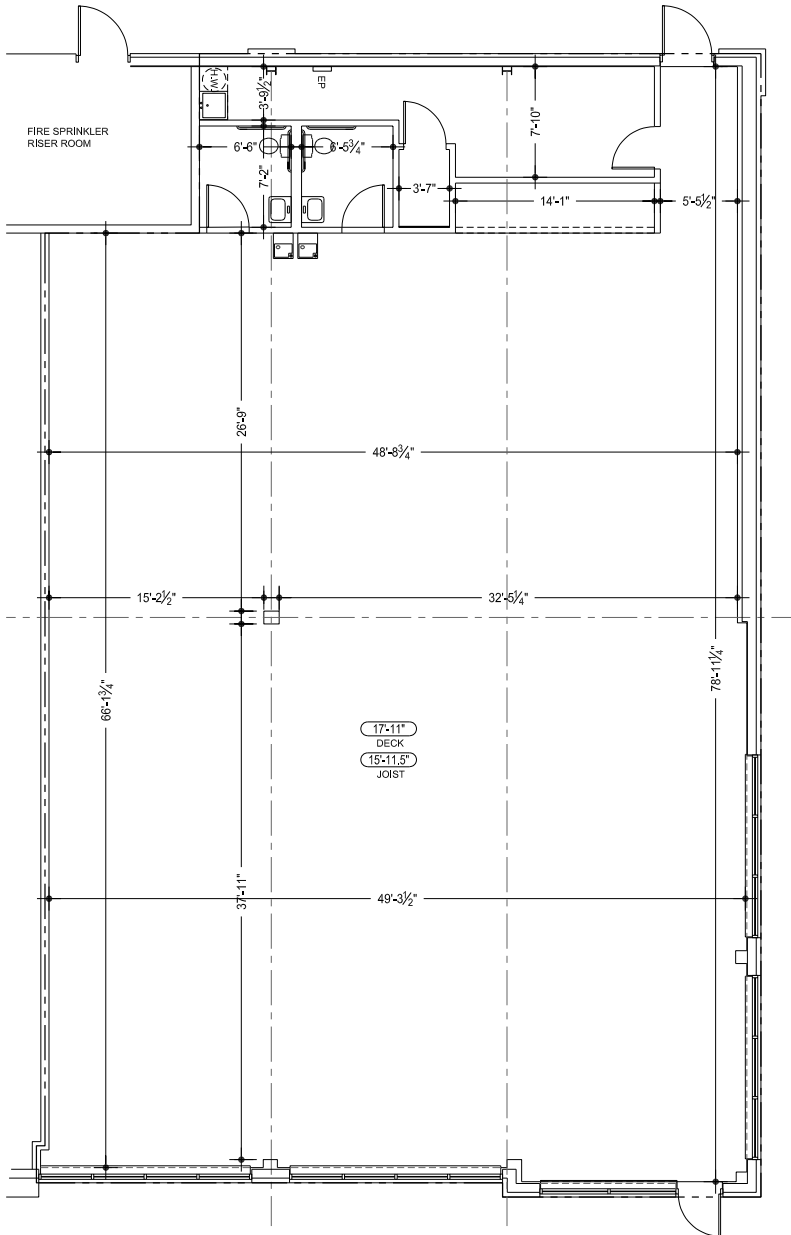
Space B: 22753 Allen Rd



- 8,050 SF Available
- Lease Rate: \$25.00 PSF NNN
- Operating Expenses: \$4.56 NNN
- Turn Key Restaurant
- Endcap Space



Space C: 19410 West Rd



- 4,000 SF Available
- Lease Rate: \$35.00 PSF NNN
- Operating Expenses: \$9.73 NNN
- Endcap Space



Property Photos



Contact Us

Scott Young
Senior Vice President
+1 248 936 6832
scott.young@cbre.com

Matt Crowell
First Vice President
+1 248 351 2084
matt.crowell@cbre.com

Ashley Young
Senior Associate
+1 248 353 5400
ashley.young@cbre.com

Jake Vorkapich
Transaction Manager
+1 248 351 2071
jake.vorkapich@cbre.com

© 2024 CBRE, Inc. All rights reserved. This information has been obtained from sources believed reliable, but has not been verified for accuracy or completeness. You should conduct a careful, independent investigation of the property and verify all information. Any reliance on this information is solely at your own risk. CBRE and the CBRE logo are service marks of CBRE, Inc. All other marks displayed on this document are the property of their respective owners, and the use of such logos does not imply any affiliation with or endorsement of CBRE. Photos herein are the property of their respective owners. Use of these images without the express written consent of the owner is prohibited.