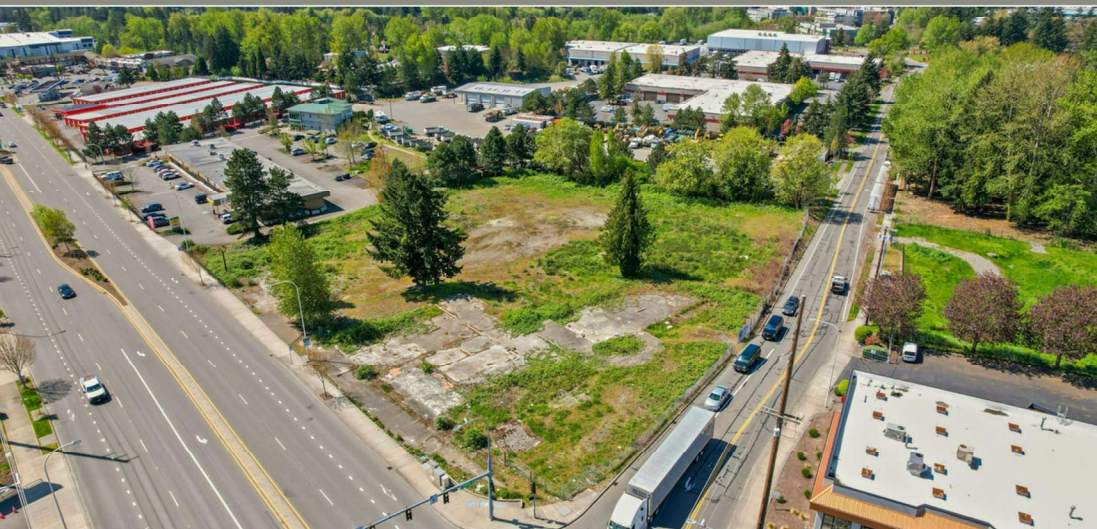


34413 PACIFIC HWY S
FEDERAL WAY, WA 98003



34413 Pacific Highway South
Federal Way, WA, 98003

PERMIT READY HOTEL DEVELOPMENT OPPORTUNITY



PROPERTY HIGHLIGHTS

- Prime location in busy Federal Way
- Permit ready to develop (90) room hotel + commercial retail
- 2.4 total acres
- Surrounded by a plethora of major retail, Walmart, Costco, Home Depot
- Zoned CE Commercial Enterprise with a multitude of commercial options, including office, breweries, restaurants, hospitals, daycare, church, etc.
- Level and flat corner lot

CONTACT

TAMMIE FREEMAN

VP of Sales / Sr. Broker

Lic: 138821

425.835.2304

tammie@vreg.co



VENTURE REAL ESTATE GROUP

40 Lake Bellevue Drive,
Suite 230

Bellevue, WA 98005

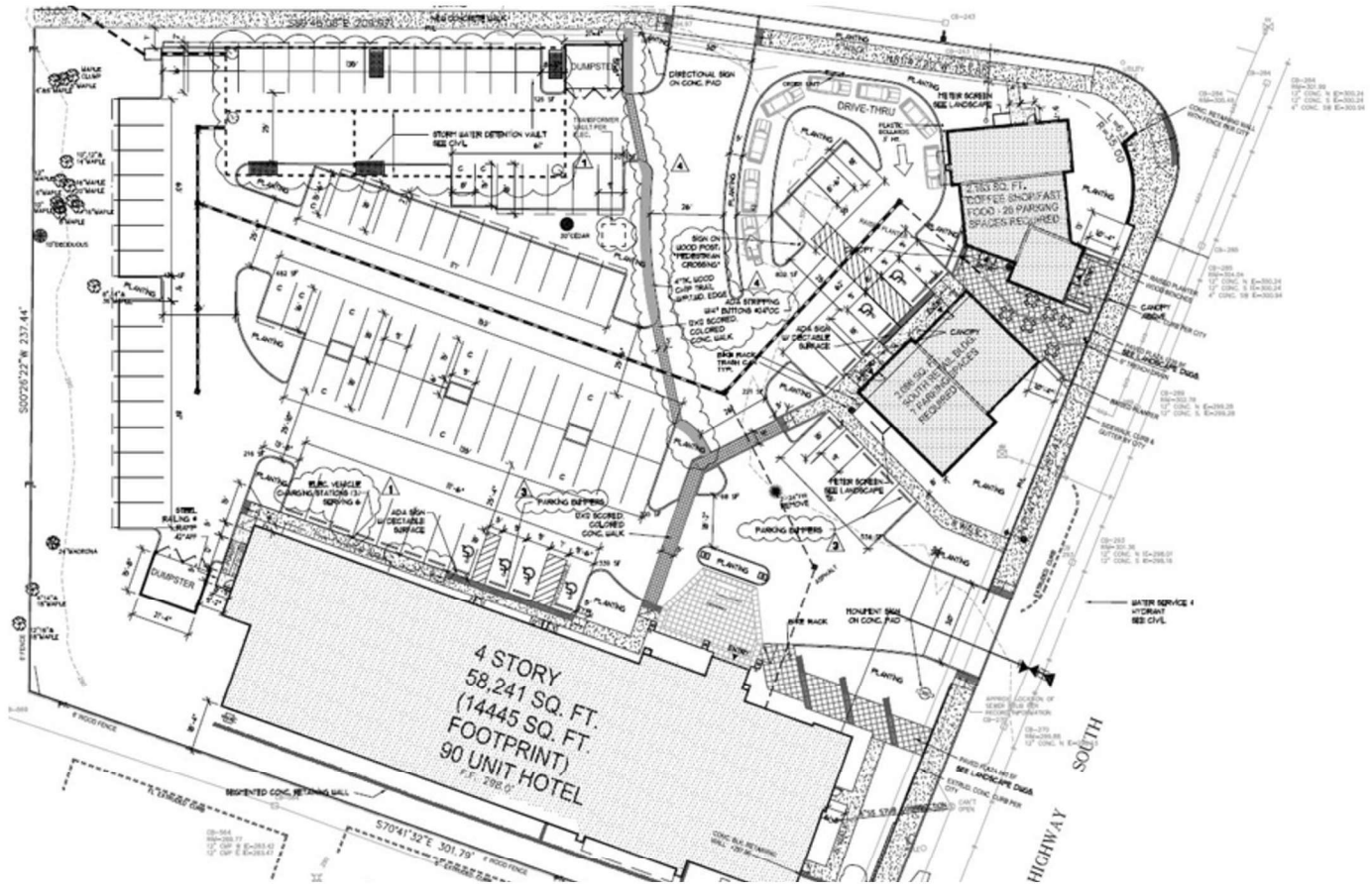
425.531.7966

www.vreg.co

WWW.VREG.CO

34413 PACIFIC HWY S
FEDERAL WAY, WA 98003

PERMIT READY 90-ROOM HOTEL + RETAIL



Plans to include 4-story, 90 room, 58,241 SF hotel. Parking to include 109 spaces. Retail to include a restaurant or coffee shop with 2,163 SF and additional retail space of 2,096 SF for a total space of 4,259 SF.



KEY Demographics*

- Total Population = 98,000
- Daytime Population = 58,000
- Avg Household Income = \$118,000
- Number of Businesses = 4,300

Location Details

- Located on Busy Pacific Hwy S
- Just a Few Minutes to I-5
- Over 33K CPD Pacific Hwy S
- 1.5 miles from The Commons

Tammie Freeman
Venture Real Estate Group
425.835.2304
tammie@vreg.co



* 2024 PROJECTIONS FOR FEDERAL WAY, WA. COLLECTED VIA SITES USA

WWW.VREG.CO