



FOR SALE/LEASE

KOLL CENTER II

**9661 IRVINE CENTER DRIVE | IRVINE SPECTRUM | ±2,313 SQUARE FEET | CALL FOR PRICING**

**DAVE SMITH**  
SENIOR VICE PRESIDENT  
**LICENSE ID# 01195186**  
949.790.3134  
DSMITH@LEEIRVINE.COM

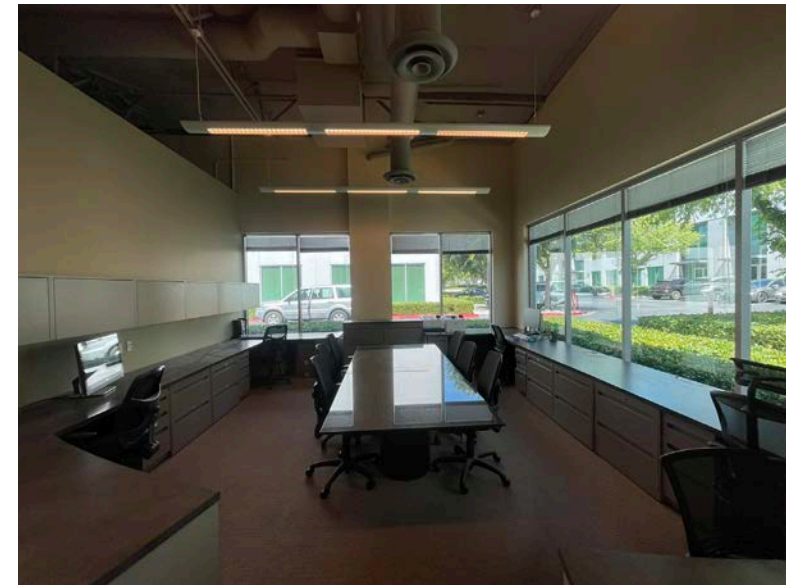
**MATT FRYER**  
SENIOR VICE PRESIDENT  
**LICENSE ID# 01333079**  
949.790.3122  
MFRYER@LEEIRVINE.COM

**TRAVIS WATTS**  
SENIOR ASSOCIATE  
**LICENSE ID# 01927498**  
949.790.3140  
TWATTS@LEEIRVINE.COM

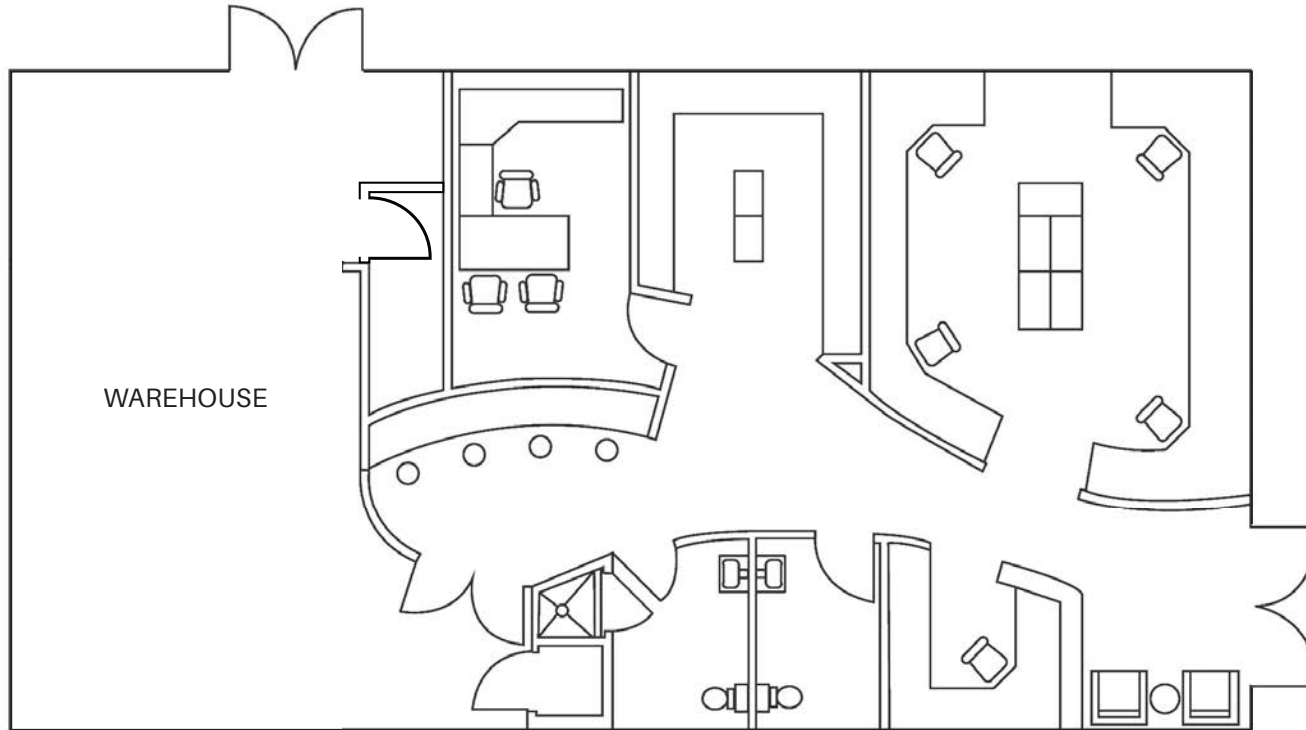
# PROPERTY OVERVIEW

9661 IRVINE CENTER DRIVE | IRVINE

- Rare ±2,313 SF High Image Single Story Flex/R&D Condo
  - » ±1,713 SF of Office
  - » ±600 SF of Warehouse
- End Unit with Extensive Window Line
- Exceptional Owner/User, Investment or Leasing Opportunity
- Modern Architecture & Newer Age Construction – Built in 2006
- Creative Build Out w/ Exposed Ceilings, Hard Ducting & Polished Concrete Flooring
- Primarily Open Layout w/ One (1) Large Private Office, Restrooms/Shower, Kitchen & Reception Area
- Glass Double Door Warehouse Entrance & ±600 SF of Permitted Attic Storage Space (Not Included in the Square Footage)
- Double Door Ground Floor Entrance off the Parking Lot
- Highly Desirable Irvine Spectrum Location/Address
- Free Surface Parking (3:1,000 SF) – Two (2) Reserved Stalls
- Close Proximity to Irvine Spectrum Entertainment Center & Los Olivos Marketplace
- Situated Near Irvine Spectrum’s Newest Residential Developments
- Immediate Access to the 5, 405, 73, 133 & 241 FWYS/Toll Roads
- Aggressive SBA lending (10% down)
- Professionally Managed Business Park
- **ASKING LEASE RATE: TBD - CALL FOR PRICING**
- **ASKING SALE PRICE: TBD - CALL FOR PRICING**



# FLOOR PLAN



\*Floor Plan Not to Scale

# 9661

## IRVINE CENTER DR

IRVINE, CALIFORNIA



# INTERIOR IMAGES

9661 IRVINE CENTER DRIVE | IRVINE



# EXTERIOR IMAGES

9661 IRVINE CENTER DRIVE | IRVINE





### LAGUNA HILLS RETAIL CENTER



### SPECTRUM CROSSROADS



**9661**  
IRVINE CENTER  
DRIVE

### PLAZA DEL LAGO



### LAKE FOREST GATEWAY





9661  
IRVINE CENTER DR  
IRVINE, CALIFORNIA

9661  
IRVINE CENTER DR

IRVINE, CALIFORNIA



 **LEE & ASSOCIATES**  
COMMERCIAL REAL ESTATE SERVICES  
SMITH | FRYER | WATTS

**DAVE SMITH**  
SENIOR VICE PRESIDENT  
LICENSE ID# 01195186  
949.790.3134  
DSMITH@LEEIRVINE.COM

**MATT FRYER**  
SENIOR VICE PRESIDENT  
LICENSE ID# 01333079  
949.790.3122  
MFRYER@LEEIRVINE.COM

**TRAVIS WATTS**  
SENIOR ASSOCIATE  
LICENSE ID# 01927498  
949.790.3140  
TWATTS@LEEIRVINE.COM

# KOLL CENTER II

9661 IRVINE CENTER DRIVE | IRVINE, CA



 **LEE & ASSOCIATES**  
COMMERCIAL REAL ESTATE SERVICES  
SMITH | FRYER | WATTS

**DAVE SMITH**  
SENIOR VICE PRESIDENT  
LICENSE ID# 01195186  
949.790.3134  
DSMITH@LEEIRVINE.COM

**MATT FRYER**  
SENIOR VICE PRESIDENT  
LICENSE ID# 01333079  
949.790.3122  
MFRYER@LEEIRVINE.COM

**TRAVIS WATTS**  
SENIOR ASSOCIATE  
LICENSE ID# 01927498  
949.790.3140  
TWATTS@LEEIRVINE.COM