

4275

S BURNHAM AVE

LAS VEGAS, NV 89119

**DESERT SPRINGS
MEDICAL PLAZA II**
MEDICAL OFFICE
FOR **LEASE**

SUITES RANGING FROM
1,375 SF - 6,213 SF



HEALTHCARE

JAMIE KRAHNE
SENIOR VICE PRESIDENT
702.216.2363 **CELL**
jamiiek@dcghealthcare.com
B.143850/PM.164496

MIKE TYMCZYN
VICE PRESIDENT
702.271.4004 **CELL**
miket@dcghealthcare.com
S.177844

PROPERTY HIGHLIGHTS

- Awarded Outstanding Building of the Year
- Turnkey suites available
- Generous Tenant Improvement Allowance
- Located in the Flamingo office corridor
- Current specialties include: **Cardiology - Outpatient Surgery Center- Laboratory - Internal Medicine - Podiatry - Primary Care**

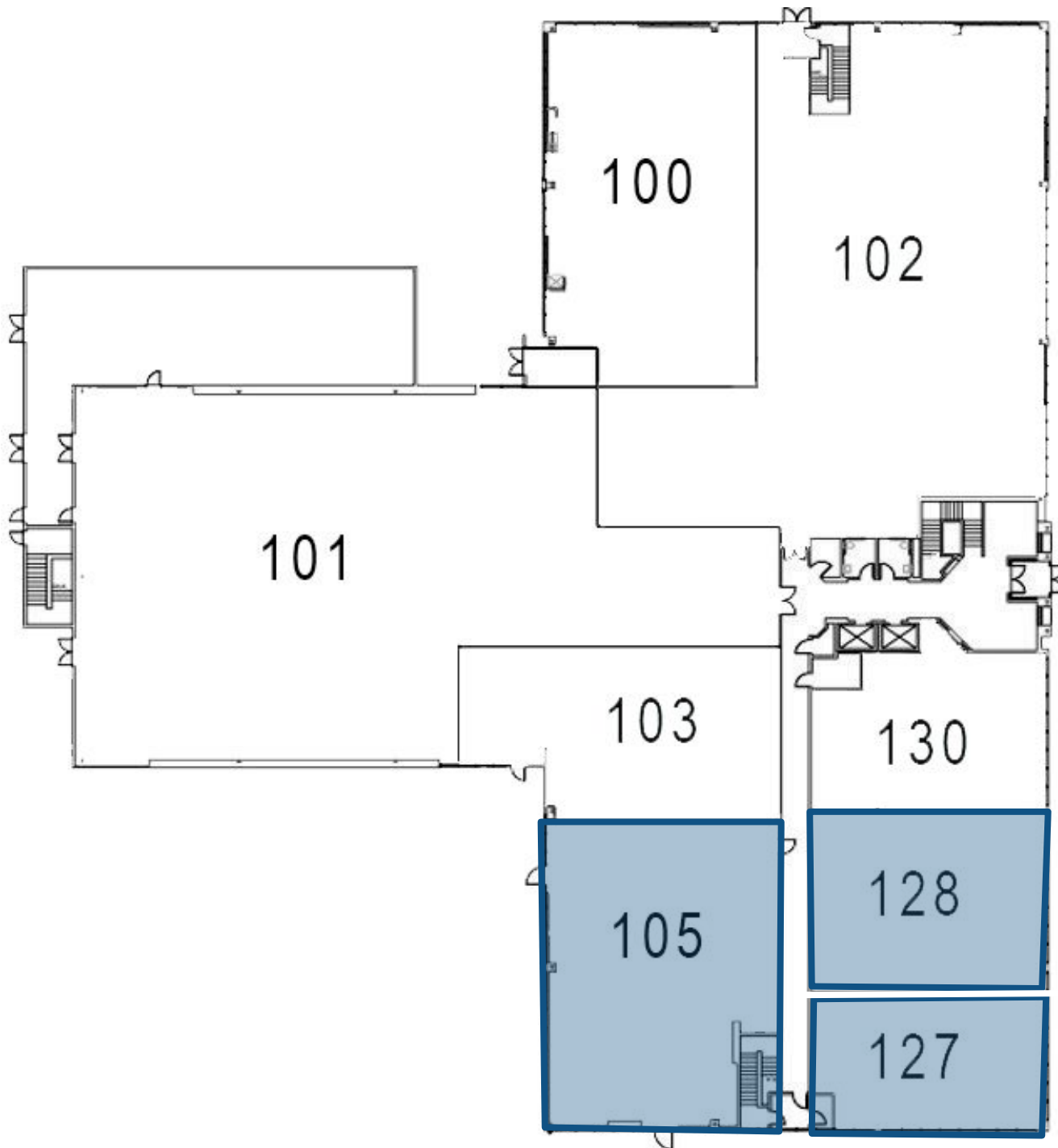
AREA MAP



DESERT SPRINGS MEDICAL PLAZA II



FIRST FLOOR

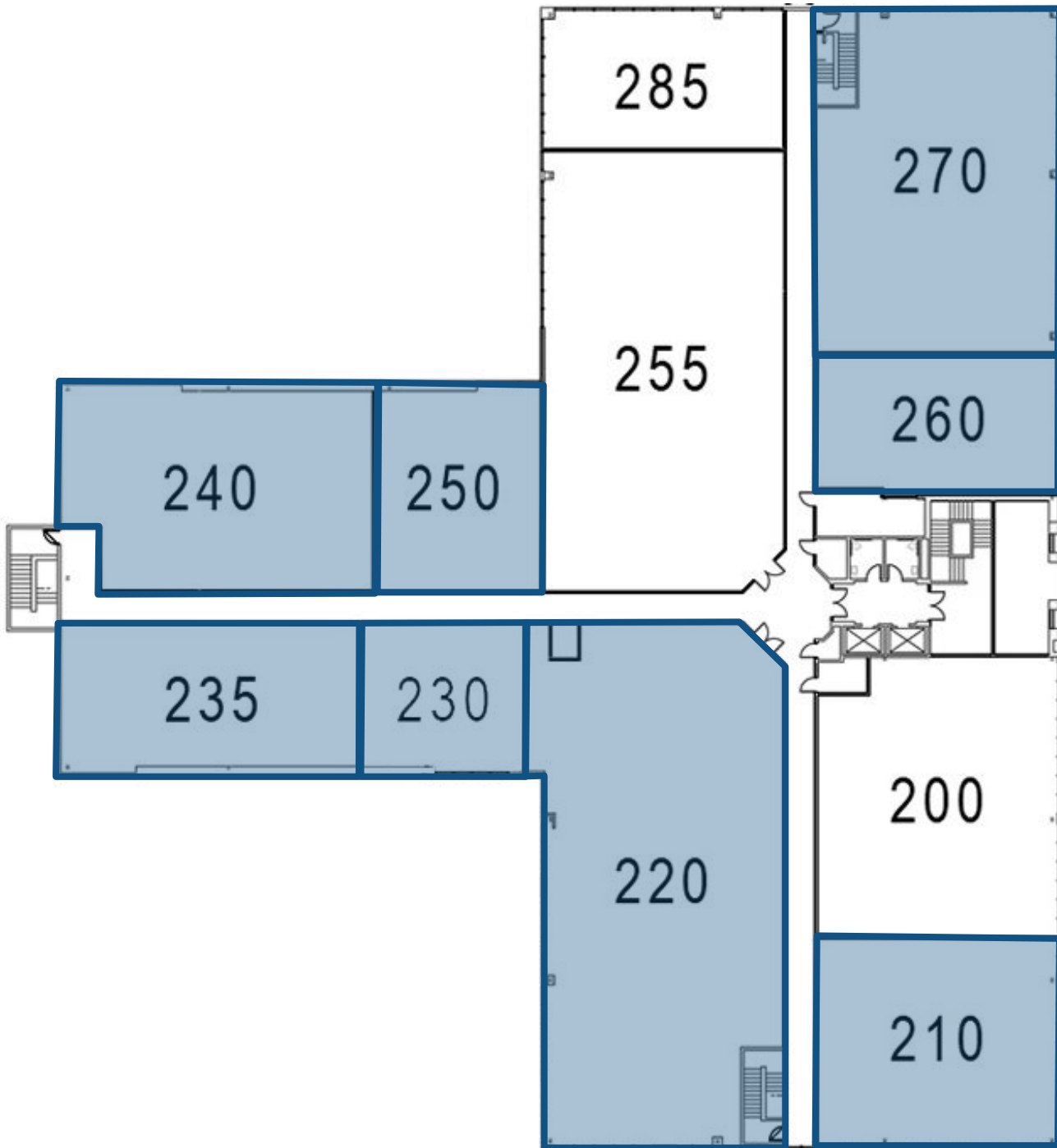


AVAILABLE SUITES

SUITE 105	3,762 SF
SUITE 127	1,935 SF
SUITE 128	2,049 SF



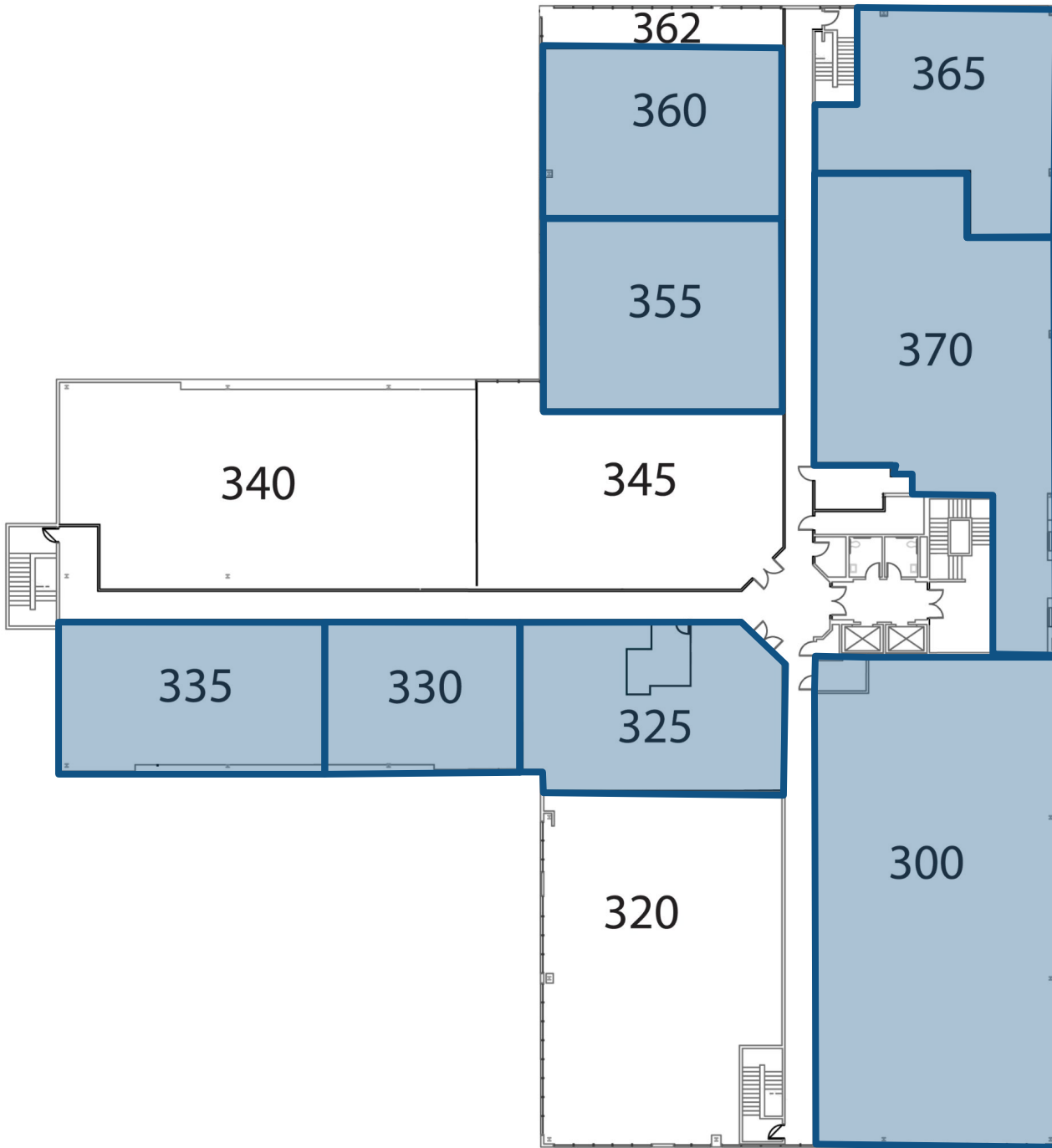
SECOND FLOOR



AVAILABLE SUITES

SUITE 210	3,330 SF
SUITE 220	6,213 SF
SUITE 230	1,375 SF
SUITE 235	2,162 SF
SUITE 240	3,097 SF
SUITE 250	1,902 SF
SUITE 260	1,907SF
SUITE 270	3,839 SF

THIRD FLOOR



AVAILABLE SUITES

SUITE 300	5,994 SF
SUITE 325	1,998 SF
SUITE 330	1,518 SF
SUITE 335	2,032 SF
SUITE 355	2,053 SF
SUITE 360	2,390 SF
SUITE 365	1,989 SF
SUITE 370	4,031 SF