

Industrial Property | For Lease

3140 Koapaka Street Space B

Honolulu, HI 96819



PROPERTY DESCRIPTION

Located in Honolulu's bustling airport district, 3140 Koapaka, Space B offers a versatile commercial opportunity encompassing 6,562 square feet. Office layout and two restrooms.

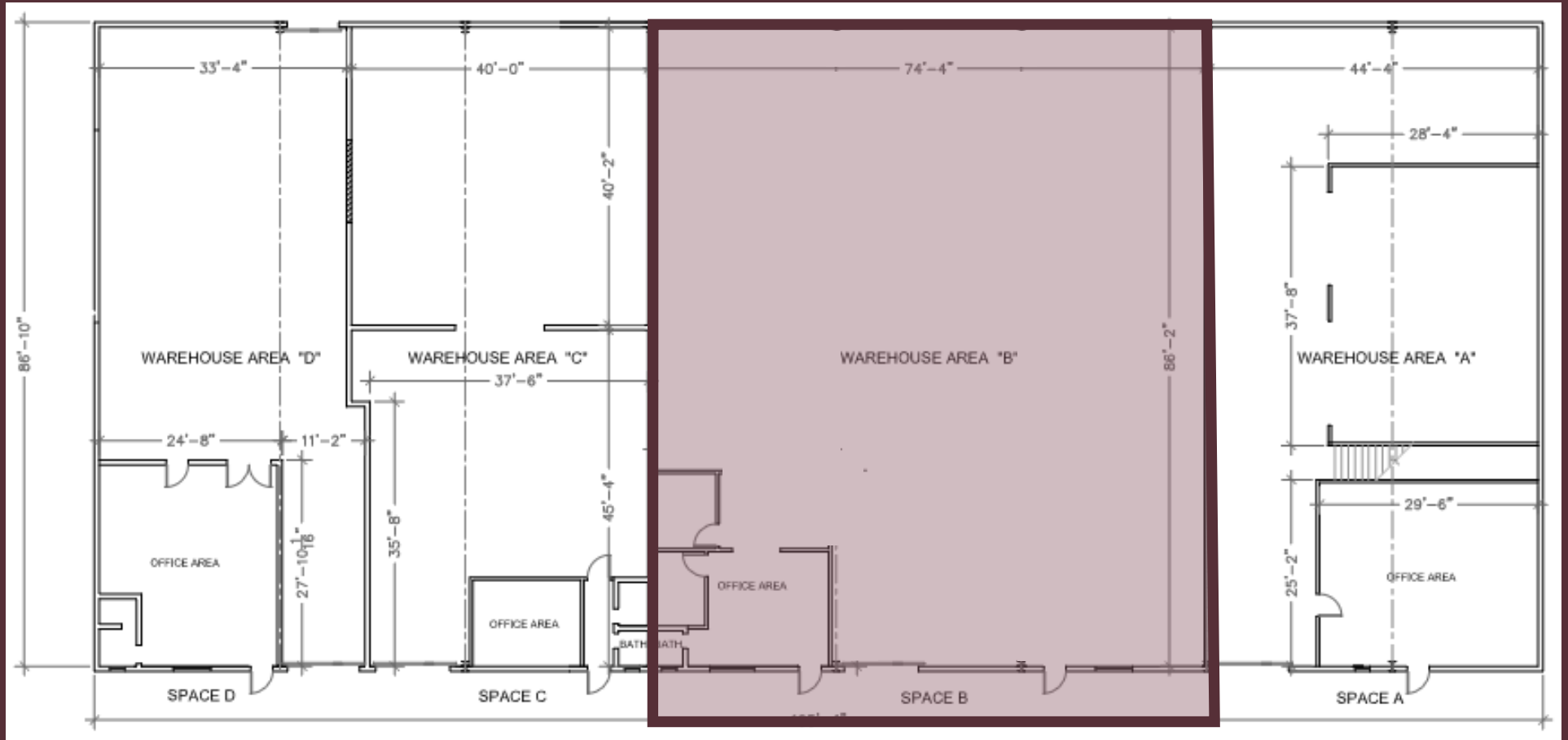
The property's proximity to Daniel K. Inouye International Airport ensures excellent connectivity, making it ideal for businesses requiring frequent travel or logistics operations. Additionally, the area boasts a variety of amenities, including dining options and retail centers.

PROPERTY SUMMARY

ADDRESS	Space B, 3140 Koapaka St, Honolulu HI 96819
RSF	6,562 SF
OFFICE	Approximately 120 SF
BASE RENT	\$1.60/SF/Mo
CAM	\$0.49/SF/Mo
TMK	1-1-1-14-82
TERM	Inquire with agent
ZONING	IMX-1
PARKING	Approximately 8 spots



* Please note 3140 Koapaka tenants periodically have containers in parking lot that may temporarily impact a portion of allocated parking areas. Tenants will coordinate directly with each other regarding logistics in an effort to reasonably accommodate each other's request.



Property Floorplan

3140 Koapaka Street Space B, Honolulu, HI 96819

Property Photos

3140 Koapaka Street Space B, Honolulu, HI 96819





CONTACT US

Peter Grossman · Lic. (RS) 68843
peter@pacificpropertygrouphawaii.com
(808) 282-0086

Keane Omaye-Backman · Lic. (RS) 76415
keane@pacificpropertygrouphawaii.com
(808) 292-6861

Wyatt Santilena · Lic. (RS) 87287
wyatt@pacificpropertygrouphawaii.com
(808) 421-8556



615 Piikoi St, Suite 910
Honolulu, HI 96814

The information provided has been gathered from sources we believe to be reliable; however, Pacific Property Group has not independently verified its accuracy or completeness. We make no guarantees, representations, or warranties regarding the information and assume no liability for any errors or omissions. Prospective parties are encouraged to conduct their own independent investigation to confirm all details. Any reliance on the information is at your own discretion and risk.