

AMERICAN BUILDING

LOCATED IN THE HEART OF MAITLAND

1051
WINDERLEY
PLACE

MAITLAND | FL, 32751

FOR LEASE

CBRE

FOR LEASE	
SUITE	RSF
105	3,164
203	3,093
205	1,557
300	3,807
312	1,557
Third Floor	1,557 - 5,364 (contiguous)

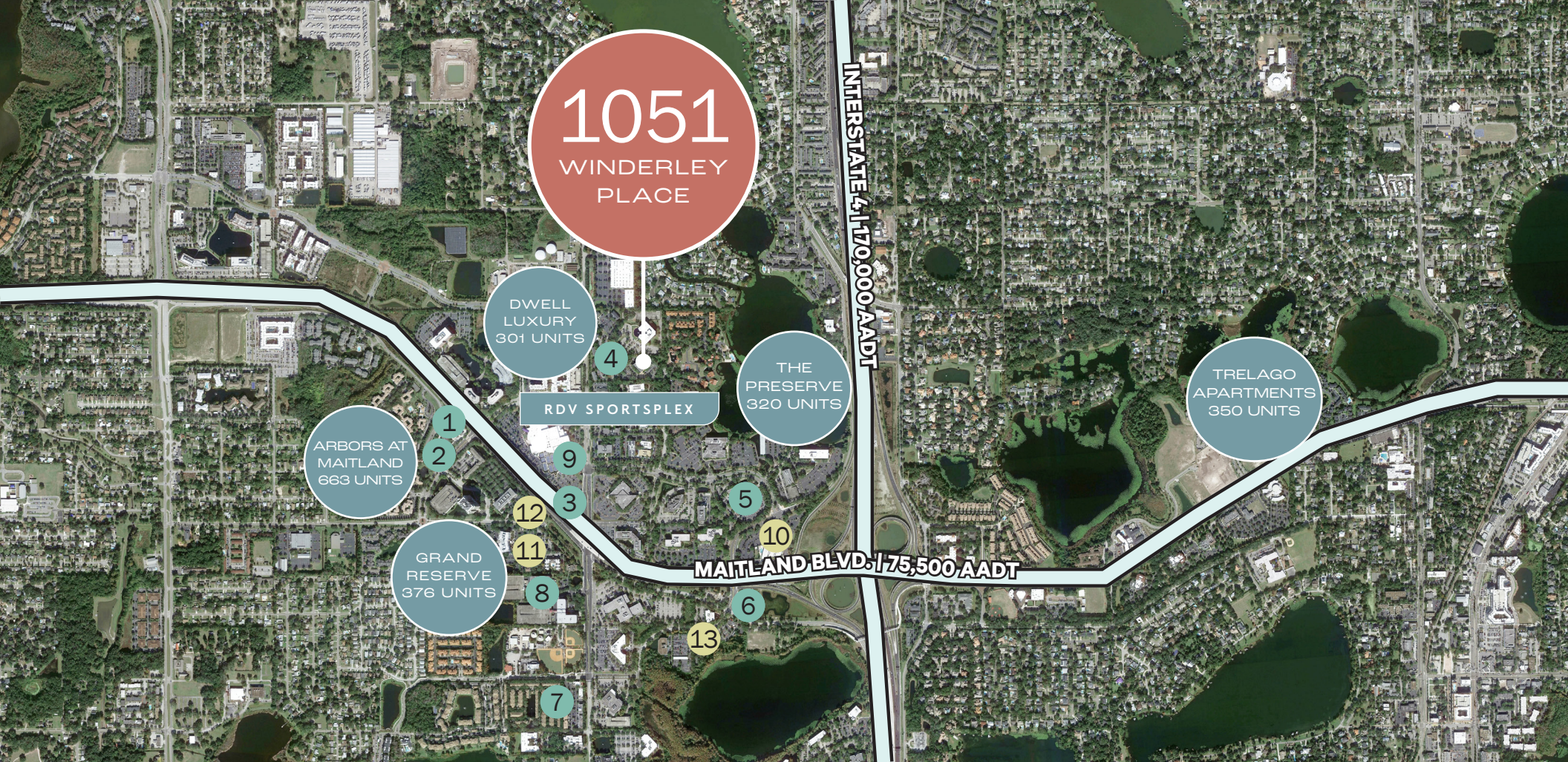
PROPERTY HIGHLIGHTS

- ◆ 58,105 SF total, four-story building
- ◆ 3.75/1,000 SF parking ratio
- ◆ Convenient access to I-4 and SR 429 (Western Beltway)
- ◆ On-site local owner and management
- ◆ Nine foot ceilings
- ◆ Walking distance to the RDV Sportsplex, New York Deli, Sam Snead's Tavern and Subway



BUILDING PHOTOS





DINING

- 1 Chick-fil-A

- 2 Wendy's

- 3 Sam Snead's Oak Grill & Tavern

- 4 Subway

- 5 Greenhouse Cafe

- 6 Applebee's Grill & Bar

- 7 Curry Bowl Orlando

- 8 New York Deli

- 9 Nature's Table

HOTELS

- 10 Sheraton Orlando North Hotel

- 11 Courtyard by Marriott

- 12 Extended Stay America

- 13 Homewood Suites by Hilton

LOCATION

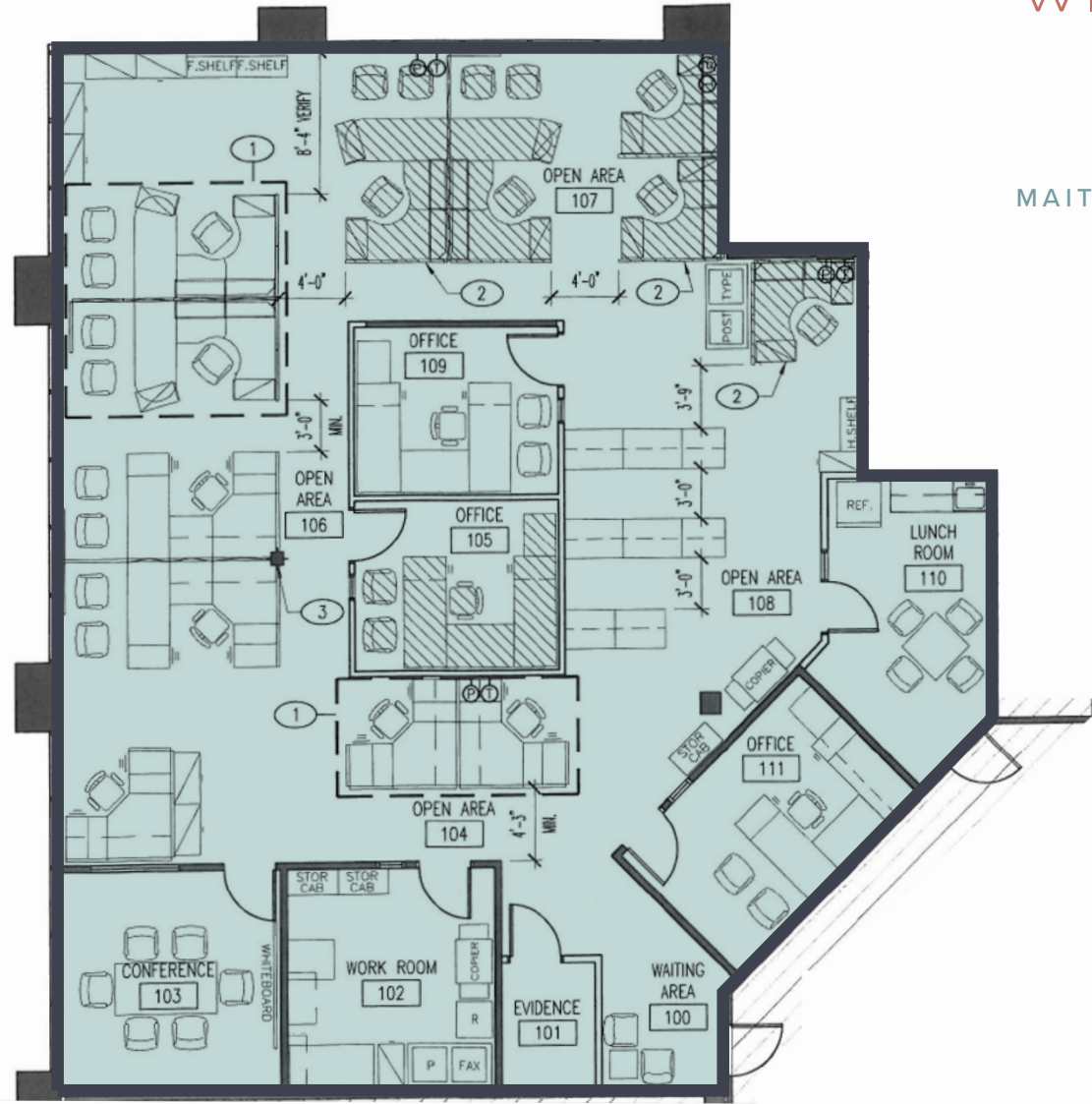
1051 Winderley Place, known as the American Building is located in the heart of Maitland Downtown. The building is within close proximity to the RDV Sportsplex, Sam Snead's Tavern, numerous restaurants, hotels, banking and shopping facilities.

FIRST FLOOR - SUITE 105

3,164 RSF AVAILABLE

1051 WINDERLEY PLACE

MAITLAND | FL, 32751



FOR LEASE

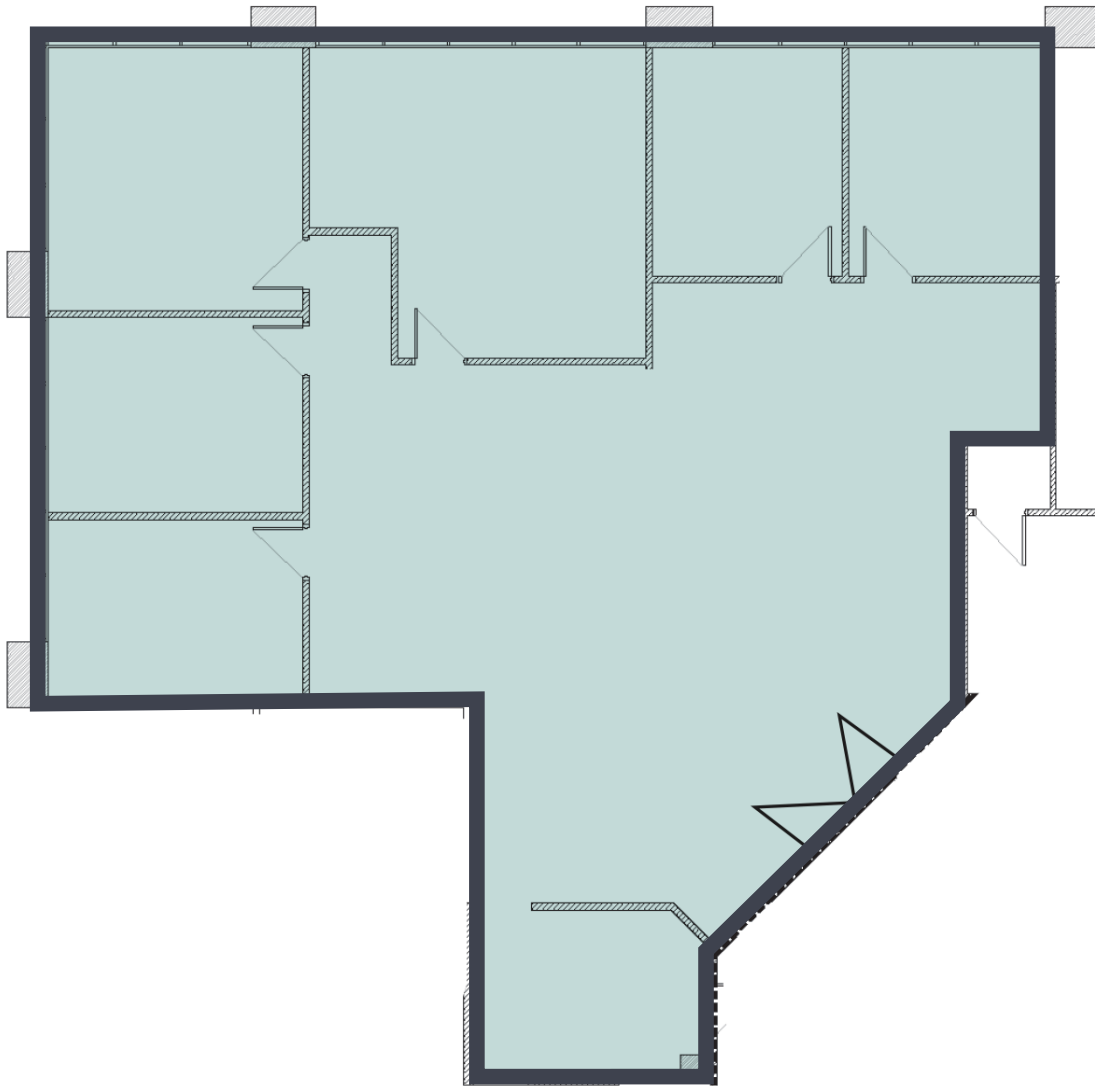
SECOND FLOOR - SUITE 203 (SPEC SUITE)

3,093 RSF AVAILABLE

1051

WINDERLEY
PLACE

MAITLAND | FL, 32751

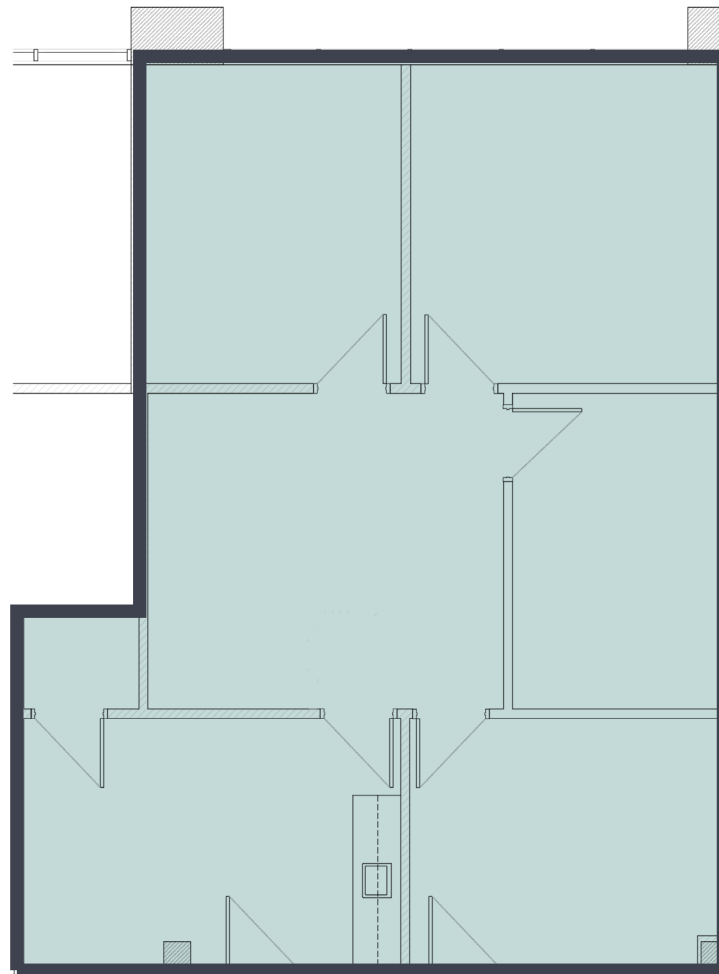


FOR LEASE

SECOND FLOOR - SUITE 205
1,557 RSF AVAILABLE

1051 WINDERLEY PLACE

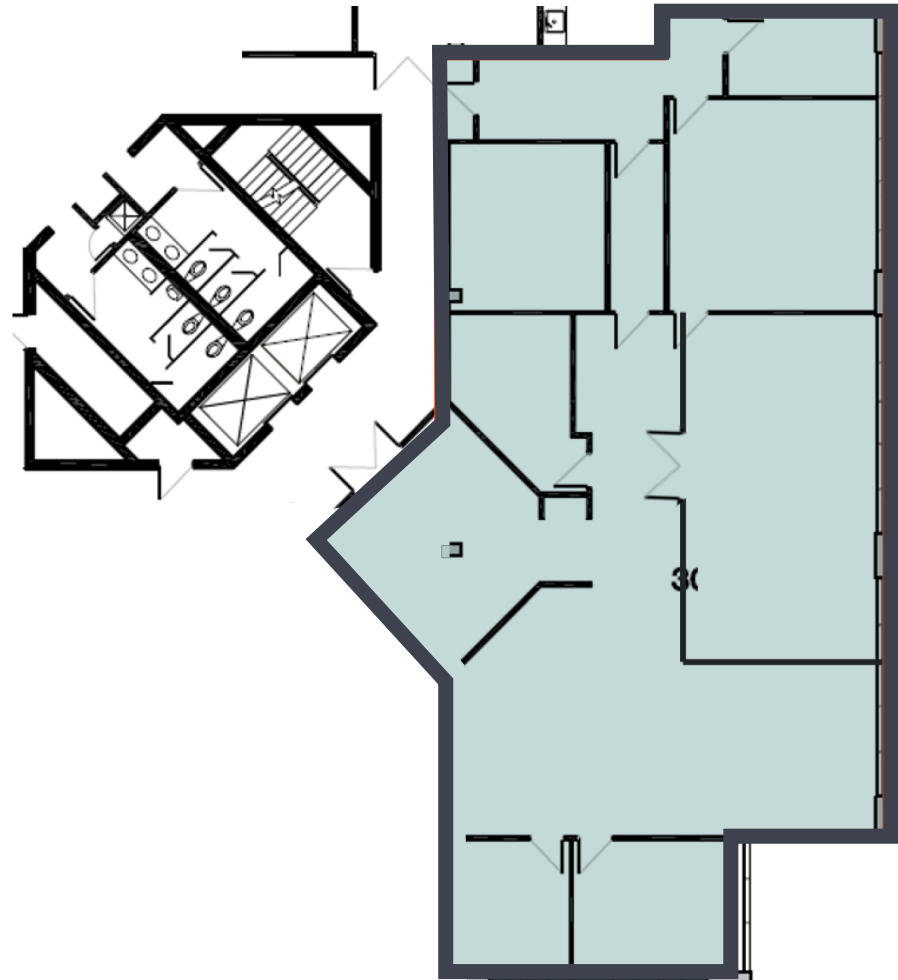
MAITLAND | FL, 32751



FOR LEASE

SECOND FLOOR - SUITE 300

3,807 RSF AVAILABLE



1051 WINDERLEY PLACE

MAITLAND | FL, 32751

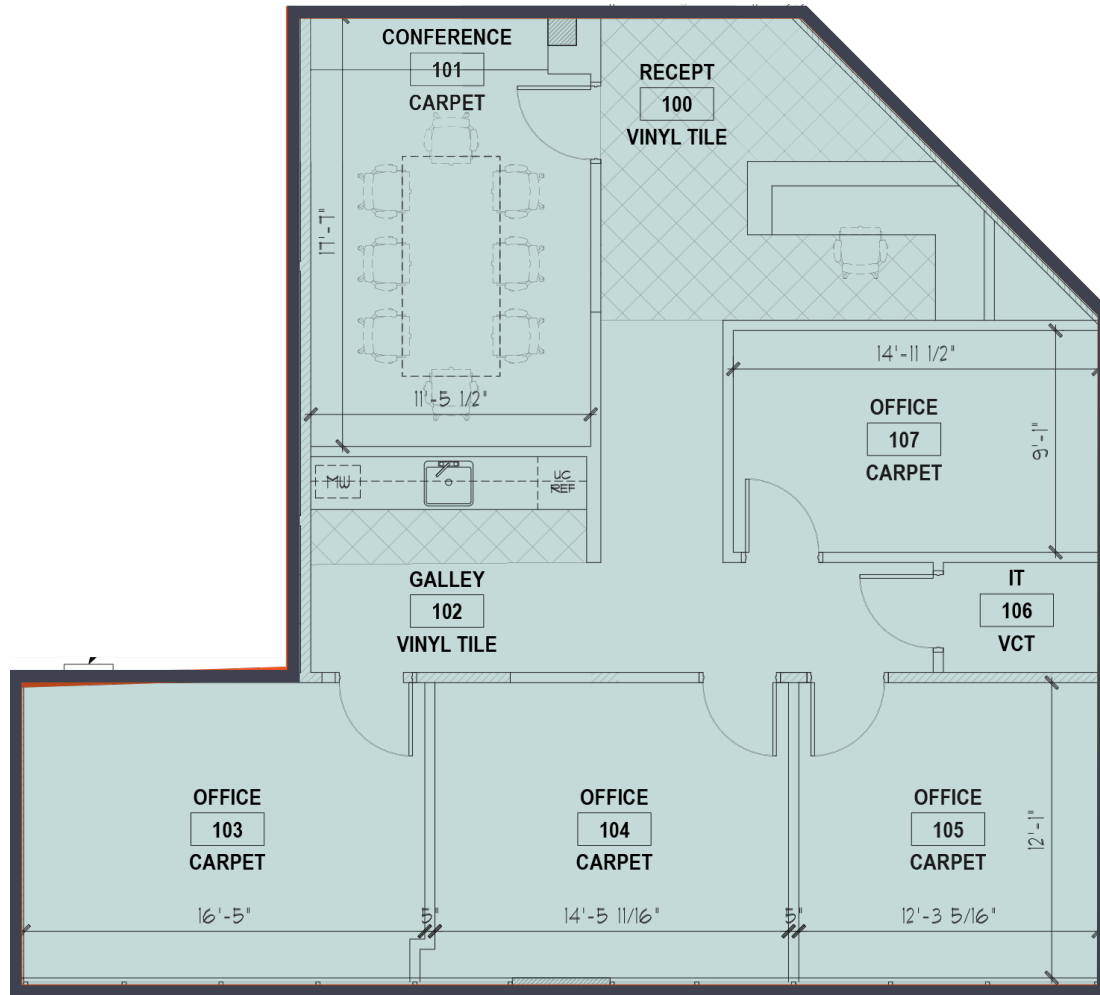
FOR LEASE

THIRD FLOOR - SUITE 312 (SPEC PLAN)

1,557 RSF AVAILABLE

1051 WINDERLEY PLACE

MAITLAND | FL, 32751



FOR LEASE

THIRD FLOOR

1,557 - 5,364 RSF AVAILABLE

1051 WINDERLEY PLACE

MAITLAND | FL, 32751



FOR LEASE

AMERICAN BUILDING

LOCATED IN THE HEART OF MAITLAND

1051
WINDERLEY
PLACE

MAITLAND | FL, 32751

CONTACT:

SANDY CHACE

Senior Vice President

+1 407 404 5099

sandy.chace@cbre.com

© 2023 CBRE, Inc. All rights reserved. This information has been obtained from sources believed reliable but has not been verified for accuracy or completeness. CBRE, Inc. makes no guarantee, representation or warranty and accepts no responsibility or liability as to the accuracy, completeness, or reliability of the information contained herein. You should conduct a careful, independent investigation of the property and verify all information. Any reliance on this information is solely at your own risk. CBRE and the CBRE logo are service marks of CBRE, Inc. All other marks displayed on this document are the property of their respective owners, and the use of such marks does not imply any affiliation with or endorsement of CBRE. Photos herein are the property of their respective owners. Use of these images without the express written consent of the owner is prohibited.