

## 960 International Parkway

960 International Pky, Lake Mary, FL 32746

Premier  

---

Sotheby's  
INTERNATIONAL REALTY



**Mel Bernstein**

Premier Sotheby's International Realty - Lake Mary  
1117 International Dr, Suite 1711, Lake Mary, FL 32746  
[mel@luxuriushomes.com](mailto:mel@luxuriushomes.com)  
(407) 810-4726



# 960 International Parkway

\$2,300,000

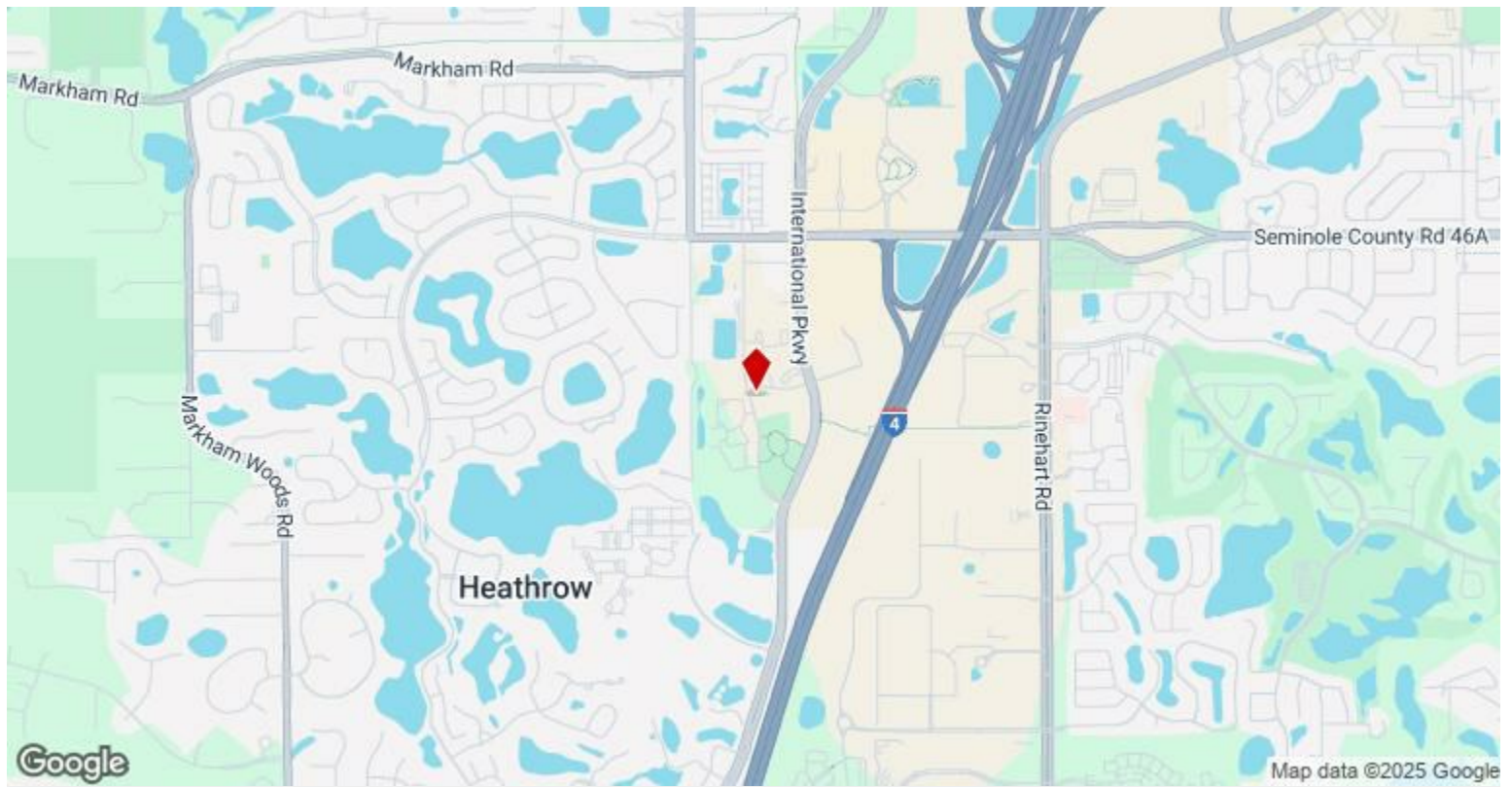
Currently divided into two suites, this property is income-producing. The largest suite is about 3,900 square feet, configured with a reception room, multiple offices and showrooms, private space, and a storage room with direct exterior access. The tenant space is an open approximately 1,100-square-foot suite with private exterior access and a restroom. Both suites enjoy floor-to-ceiling windows, abundant light and tall ceilings. Private electric car charging station onsite....

- International Parkway has a daily traffic count of 21,226.
- The property includes a private electric car charging station onsite
- Both suites receive abundant natural light from floor-to-ceiling windows



Price:	\$2,300,000
Property Type:	Office
Property Subtype:	Medical
Building Class:	B
Sale Type:	Owner User
Lot Size:	0.14 AC
Gross Building Area:	4,995 SF
Rentable Building Area:	4,995 SF
Sale Conditions:	1031 Exchange
No. Stories:	1
Year Built:	2017
Tenancy:	Multi
Parking Ratio:	2.2/1,000 SF
Zoning Description:	PUD
APN / Parcel ID:	06-20-30-300-007S-0000





**960 International Pky, Lake Mary, FL 32746**



Property Photos



Aerial





## Property Photos





## Property Photos



Primar Space side view



Electric vehicle charger



## Property Photos





## Property Photos



Interior Photo



Office



## Property Photos





## Property Photos





## Property Photos





## Property Photos





## Property Photos



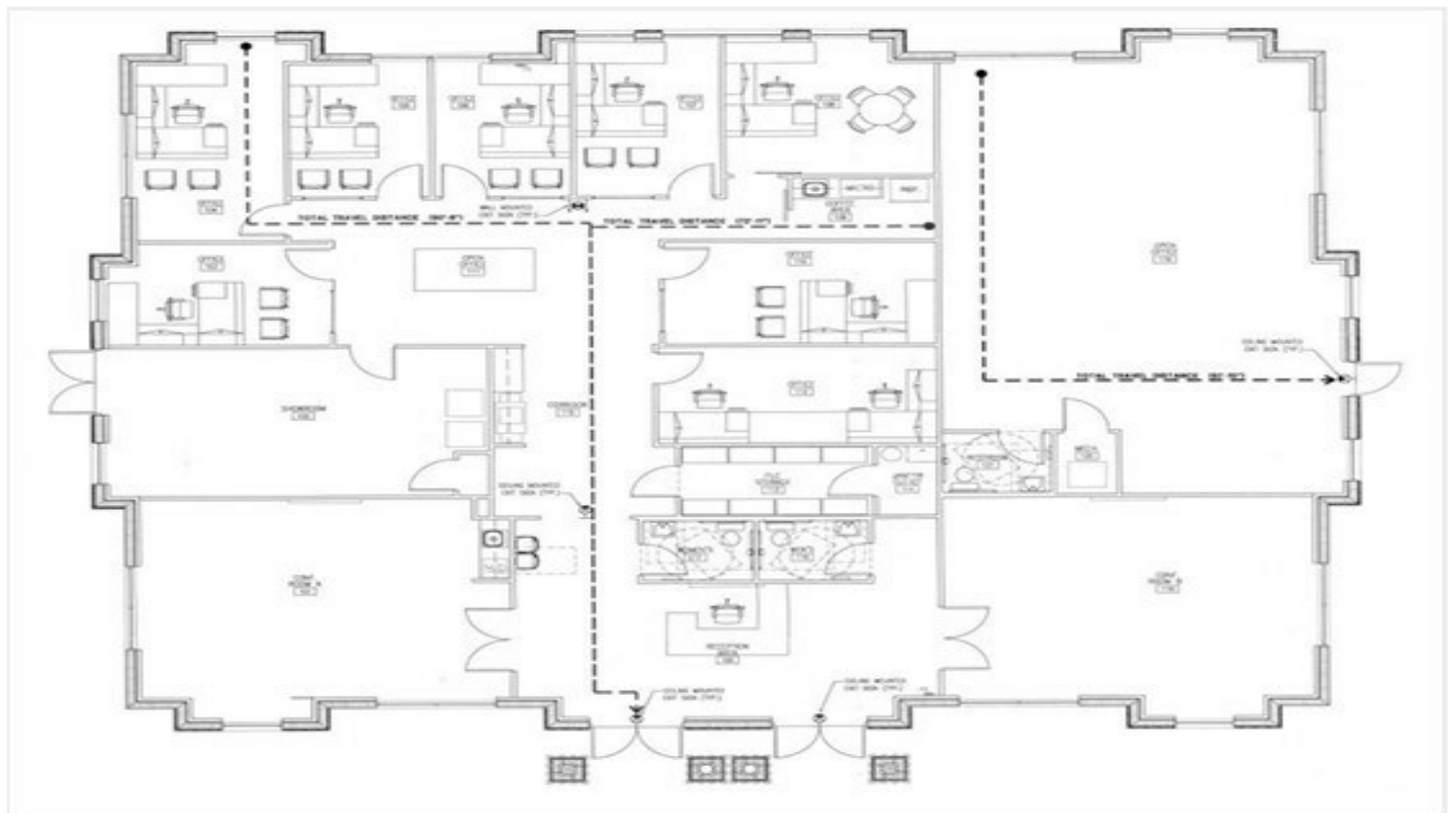


## Property Photos





## Property Photos



960 Int'l Pkwy Floor Plan



## Property Photos



Storage



0Y4A7245-Enhanced-NR-4096x2732



## Property Photos



060 International