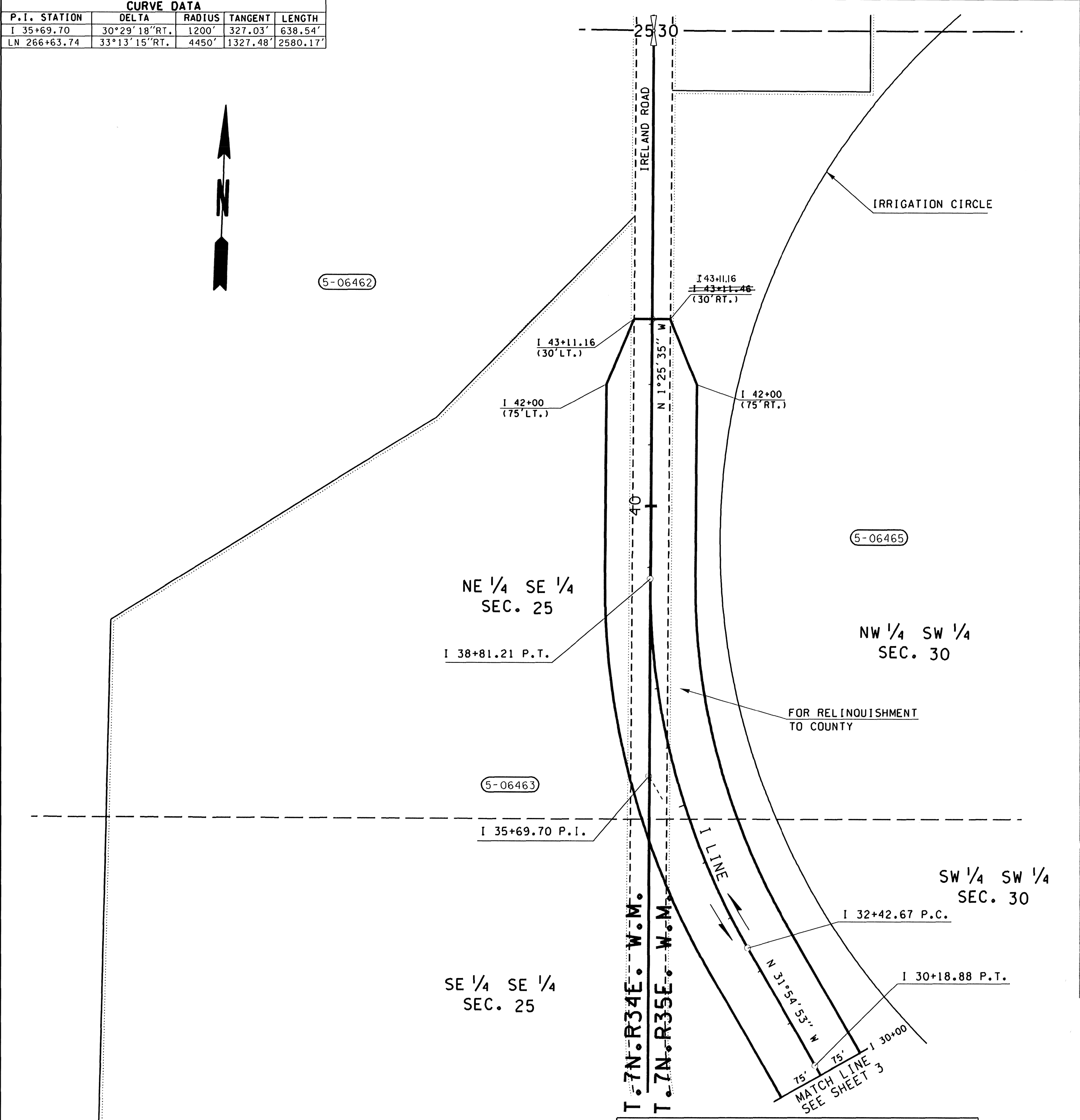


CURVE DATA				
P.I. STATION	DELTA	RADIUS	TANGENT	LENGTH
I 35+69.70	30°29'18"RT.	1200'	327.03'	638.54'
LN 266+63.74	33°13'15"RT.	4450'	1327.48'	2580.17'

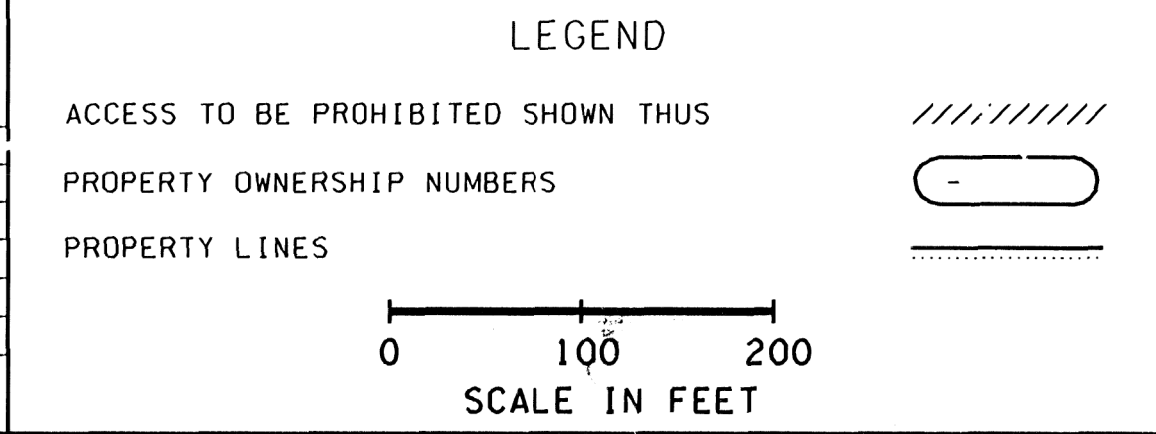


PARCEL NO.	NAME	TOTAL AREA	R/W	LT. REMAINDER RT.	EASMT
5-06461	SEE SHEET 15				
5-06462	SEE SHEET 15				
5-06463	SEE SHEET 3				
5-06464	SEE SHEET 2				

TOTAL AREA IS FROM ASSESSOR'S RECORDS UNLESS OTHERWISE NOTED.

OWNERSHIPS

ALL AREAS ARE SHOWN IN SQUARE FEET UNLESS OTHERWISE NOTED.



THIS PLAN SUPERSEDES SHEET 4 THRU 22 OF 22 SHEETS OF SR 12, IRELAND RD. VICINITY TO WALLA WALLA, APPROVED AND ADOPTED DECEMBER 6, 2005

THE BASIS OF BEARINGS AND DISTANCES ARE DETERMINED FROM WASHINGTON STATE PLANE COORDINATE SYSTEM SOUTH ZONE (NAD 83/91). THE DISTANCES SHOWN ARE GROUND DISTANCES.

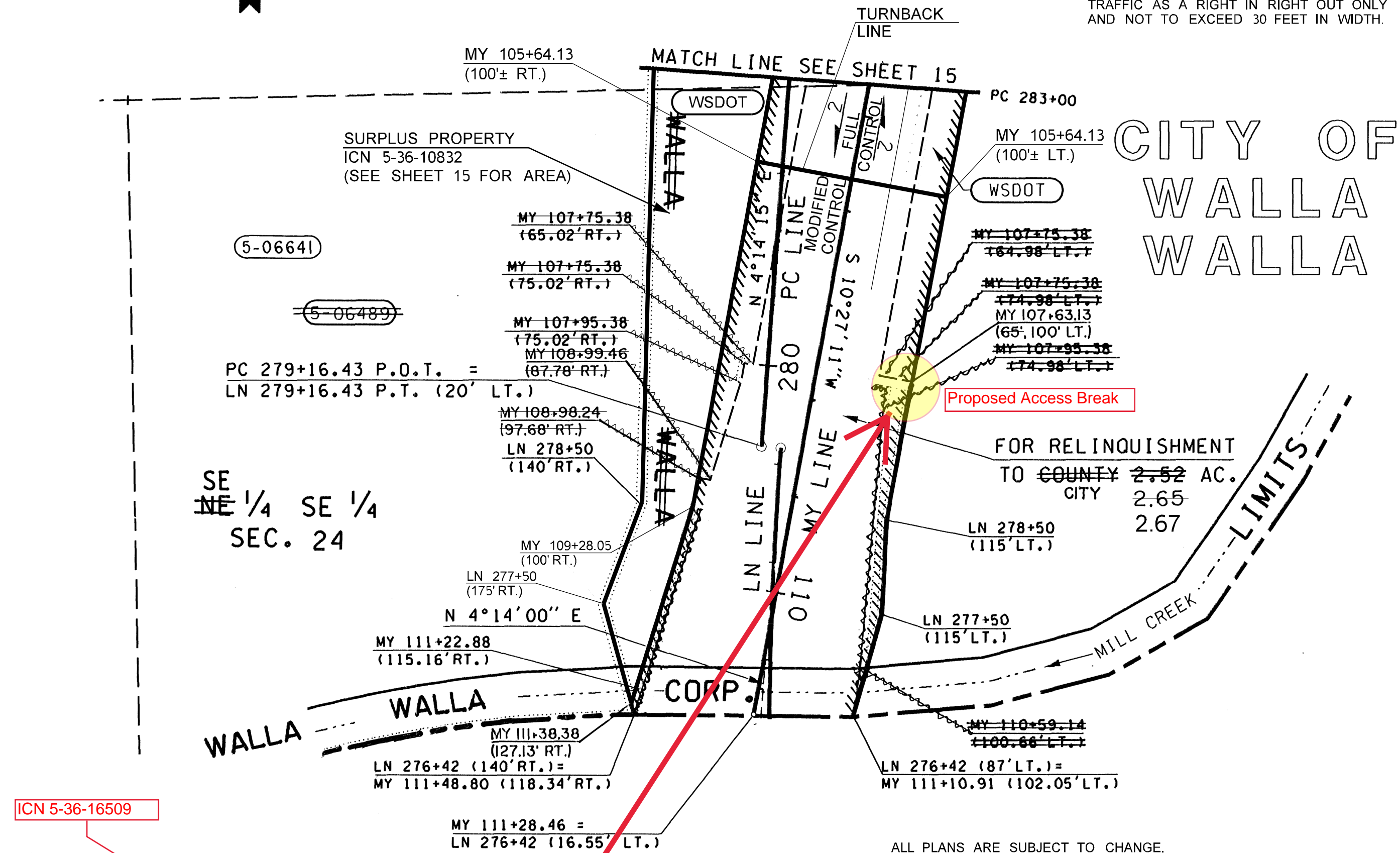
ACCESS NOTES:

TYPE D APPROACH IS AN OFF AND ON APPROACH IN A LEGAL MANNER NOT TO EXCEED 50 FEET IN WIDTH FOR USE NECESSARY TO THE NORMAL OPERATION OF A COMMERCIAL ESTABLISHMENT. IT MAY BE SPECIFIED AT A POINT SATISFACTORY TO THE STATE AT OR BETWEEN DESIGNATED HIGHWAY STATIONS.

NO. 2 THIS APPROACH IS TO BE USED TO SERVE MORE THAN ONE OWNER AND/OR UTILITY.

* APPROACH IS RESTRICTED FOR USE BY TRAFFIC AS A RIGHT IN RIGHT OUT ONLY AND NOT TO EXCEED 30 FEET IN WIDTH.

T.7N.R.35E.W.M.



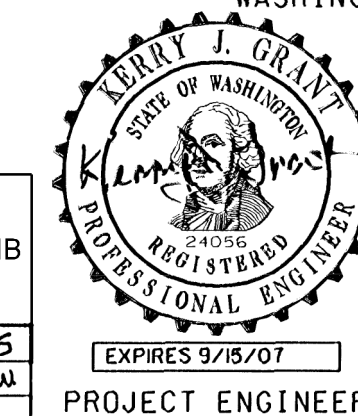
PARCEL NO.	ACCESS APPROACH SCHEDULE
ICN 5-36-16509	30' approach between MY 107+03.13 and MY 107+63.13 D-2
ICN 5-36-10832	BETWEEN MY 105+64.13 RT. AND MY 107+63.13 RT. D-2 *
	CENTERLINE OF APPROACH STATION TYPE

ALL PLANS ARE SUBJECT TO CHANGE. OWNERSHIP SHOULD BE VERIFIED. PROPOSED PROPERTY RIGHTS SHOWN MAY NOT HAVE BEEN ACQUIRED. ENCUMBRANCES MAY OR MAY NOT BE SHOWN. PARTIES SEEKING CURRENT PLAN INFORMATION SHOULD CONSULT THE DEPARTMENT OF TRANSPORTATION HEADQUARTERS RIGHT OF WAY PLANS OFFICE FOR THE OFFICIAL PLAN ON FILE. FOR ENCUMBRANCE INFORMATION CONSULT THE DEPARTMENT OF TRANSPORTATION HEADQUARTERS REAL ESTATE SERVICES OFFICE.

SR 12
IRELAND RD.
TO WALLA WALLA
WALLA WALLA COUNTY

RIGHT OF WAY AND LIMITED ACCESS PLAN
FULL AND MODIFIED CONTROL
STATION LN 276+42 TO STATION PC 283+00
STATION I 30+00 TO STATION I 43+11.46

WASHINGTON STATE DEPARTMENT OF TRANSPORTATION
OLYMPIA, WASHINGTON



APPROVED AND ADOPTED MAY 19, 2006

James R. Weger
RIGHT OF WAY PLANS ENGINEER

Letter	Date	Revision Description	By
Letter 6-19-14	7-18-14	Added Surplus Property, ICN 5-36-10832, Area and Revised R/W and L/A on Rt. Sta. PC 283+00 to MT 109+28.06 Rt.; Revised R/W and L/A on Lt. Sta. PC 283+00 MY 107+63.13; Added Access Control Line Change and Turnback Line Sta. MY 105+64.13; Added Type D-2* Access Approach ICN 5-36-10832; Revised Title Block Access Control Type; Revised Area For Relinquishment to City Vic. Sta. PC 280+00; Revised Ownership Verification Note	BHB
Letter 10-20-10	11-18-10	Corrected 61.0.1/4 Section Identification	DS
Letter 7-25-07	8-2-07	Revised Corp. Limits; Revised Area for Relinquishment from County to City	STW
Letter 1-9-07	2-1-07	Added Parcel 5-0644; Revised R/W and L/A on Rt. Sta. MY 108+99.46 to MY 111+48.80 and on Lt. Sta. MY 107+63.13 to MY 111+0.91; Revised Area for Relinquishment	STW
Letter 7-25-06	8-10-06	Revised Sta. I 43+11.6 RT.	CHK

Designated For Limited Access Control By Findings and Order Adopted December 5, 2005