

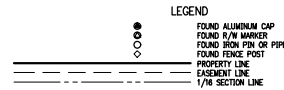
DESCRIPTION:

PART OF THE E 1/2 OF THE NW 1/4 AND PART OF THE NE 1/4 OF SECTION 34 AND PART OF THE SW 1/4 OF THE NW 1/4 OF SECTION 35 ALL IN TOWNSHIP 19 NORTH, RANGE 30 WEST, BENTON COUNTY, ARKANSAS, MORE PARTICULARLY DESCRIBED AS FOLLOWS:

BEGINNING AT THE SOUTHEAST CORNER OF THE NW 1/4 OF SAID SECTION 34, AS SHOWN IN PLAT RECORD BOOK 2008 AT PAGE 130; THENCE ALONG THE SOUTH LINE THEREOF N89°54'51"W 1000.53 FEET; THENCE LEAVING SAID SOUTH LINE N02°37'42"E 495.28 FEET; THENCE S89°59'28"E 173.88 FEET; THENCE N02°01'01"E 446.07 FEET; THENCE N30°29'53"E 245.13 FEET; THENCE S87°36'51"E 413.50 FEET; THENCE N02°01'01"E 236.41 FEET; THENCE N87°20'59"W 174.06 FEET; THENCE N17°31'59"W 208.30 FEET; THENCE 130.39 FEET ALONG A CURVE TO THE LEFT WITH A RADIUS OF 300.00 FEET AND A LONG CHORD OF N27°49'00"W 138.65 FEET; THENCE N30°00'27"E 97.81 FEET; THENCE 212.93 FEET ALONG A CURVE TO THE RIGHT WITH A RADIUS OF 300.00 FEET AND A LONG CHORD OF N17°42'21"W 208.49 FEET; THENCE N02°37'40"E 500.58 FEET TO THE SOUTH RIGHT OF WAY OF WEST PLEASANT GROVE ROAD AS DESCRIBED IN DEED RECORD BOOK 2008 AT PAGE 1008; THENCE ALONG SAID SOUTH RIGHT OF WAY S07°02'42"E 670.50 FEET; THENCE ALONG SAID SOUTH RIGHT OF WAY S81°20'03"E 141.32 FEET TO THE SOUTH RIGHT OF WAY OF WEST PLEASANT GROVE ROAD AS DESCRIBED IN DEED RECORD BOOK 2008 AT PAGE 1008; THENCE ALONG SAID SOUTH RIGHT OF WAY THE FOLLOWING EIGHT COURSES: THENCE S81°00'01"E 104.53 FEET; THENCE S88°44'55"E 141.30 FEET; THENCE 28.89 FEET ALONG A CURVE TO THE RIGHT WITH A RADIUS OF 36.24 FEET AND A LONG CHORD OF S03°46'22"E 28.84 FEET; THENCE S02°33'59"W 86.45 FEET; THENCE S87°23'12"E 118.94 FEET; THENCE N02°34'10"E 64.02 FEET; THENCE 31.15 FEET ALONG A CURVE TO THE RIGHT WITH A RADIUS OF 37.97 FEET AND A LONG CHORD OF N08°45'42"E 30.29 FEET; THENCE S87°52'37"E 355.08 FEET TO THE WESTERLY RIGHT OF WAY OF INTERSTATE 1-49 AS DESCRIBED IN DEED RECORD BOOK 2008 AT PAGE 1307; THENCE ALONG SAID WESTERLY RIGHT OF WAY S88°11'22"E 98.88 FEET TO THE WESTERLY RIGHT OF WAY OF INTERSTATE 1-49 AS DESCRIBED IN DEED RECORD BOOK 2008 AT PAGE 1304; THENCE ALONG SAID WESTERLY RIGHT OF WAY THE FOLLOWING FIVE COURSES: THENCE S03°04'14"W 11.04 FEET; THENCE S81°00'01"E 205.97 FEET; THENCE S33°00'01"E 54.09 FEET; THENCE S09°11'17"E 143.93 FEET; THENCE N74°24'33"E 131.12 FEET TO THE WESTERLY RIGHT OF WAY OF INTERSTATE 1-49; THENCE ALONG SAID WESTERLY RIGHT OF WAY THE FOLLOWING SIX COURSES: THENCE S37°46'17"E 114.97 FEET; THENCE S78°46'17"E 400.47 FEET; THENCE S89°50'00"E 236.87 FEET; THENCE S42°23'50"E 234.71 FEET; THENCE S87°52'37"E 118.65 FEET TO THE WESTERLY RIGHT OF WAY OF INTERSTATE 1-49 AS DESCRIBED IN COURT ORDER CIVIL 914-6; THENCE ALONG SAID WESTERLY RIGHT OF WAY THE FOLLOWING THREE COURSES: THENCE S41°14'07"W 253.88 FEET; THENCE S22°14'56"E 387.78 FEET; THENCE S88°54'01"E 345.95 FEET TO THE WESTERLY RIGHT OF WAY OF INTERSTATE 1-49; THENCE ALONG SAID WESTERLY RIGHT OF WAY THE FOLLOWING THREE COURSES: THENCE S07°14'04"E 29.38 FEET; THENCE S37°14'02"E 300.00 FEET; THENCE S37°14'02"E 300.00 FEET TO THE WESTERLY RIGHT OF WAY OF INTERSTATE 1-49 AS DESCRIBED IN COURT ORDER CIVIL 928-4; THENCE ALONG SAID WESTERLY RIGHT OF WAY THE FOLLOWING THREE COURSES: THENCE S87°31'25"W 238.78 FEET; THENCE S22°02'01"E 300.00 FEET; THENCE N89°31'28"E 227.77 FEET TO THE WESTERLY RIGHT OF WAY OF INTERSTATE 1-49; THENCE ALONG SAID WESTERLY RIGHT OF WAY S33°14'03"E 253.46 FEET TO THE SOUTH LINE OF THE SW 1/4 OF THE NW 1/4 OF SAID SECTION 35; THENCE ALONG SAID SOUTH LINE THEREOF N89°50'22"W 1144.66 FEET TO THE SOUTHEAST CORNER OF THE SW 1/4 OF THE NE 1/4 OF SAID SECTION 34; THENCE ALONG THE SOUTH LINE THEREOF N89°50'22"W 1025.51 FEET TO THE SOUTHEAST CORNER OF THE SW 1/4 OF THE NE 1/4 OF SAID SECTION 34; THENCE ALONG THE SOUTH LINE THEREOF N89°50'22"W 1028.11 FEET TO THE POINT OF BEGINNING, CONTAINING 1867.6 ACRES, MORE OR LESS AND SUBJECT TO ALL EASEMENTS AND RIGHTS OF WAY OF RECORD OR FACT.

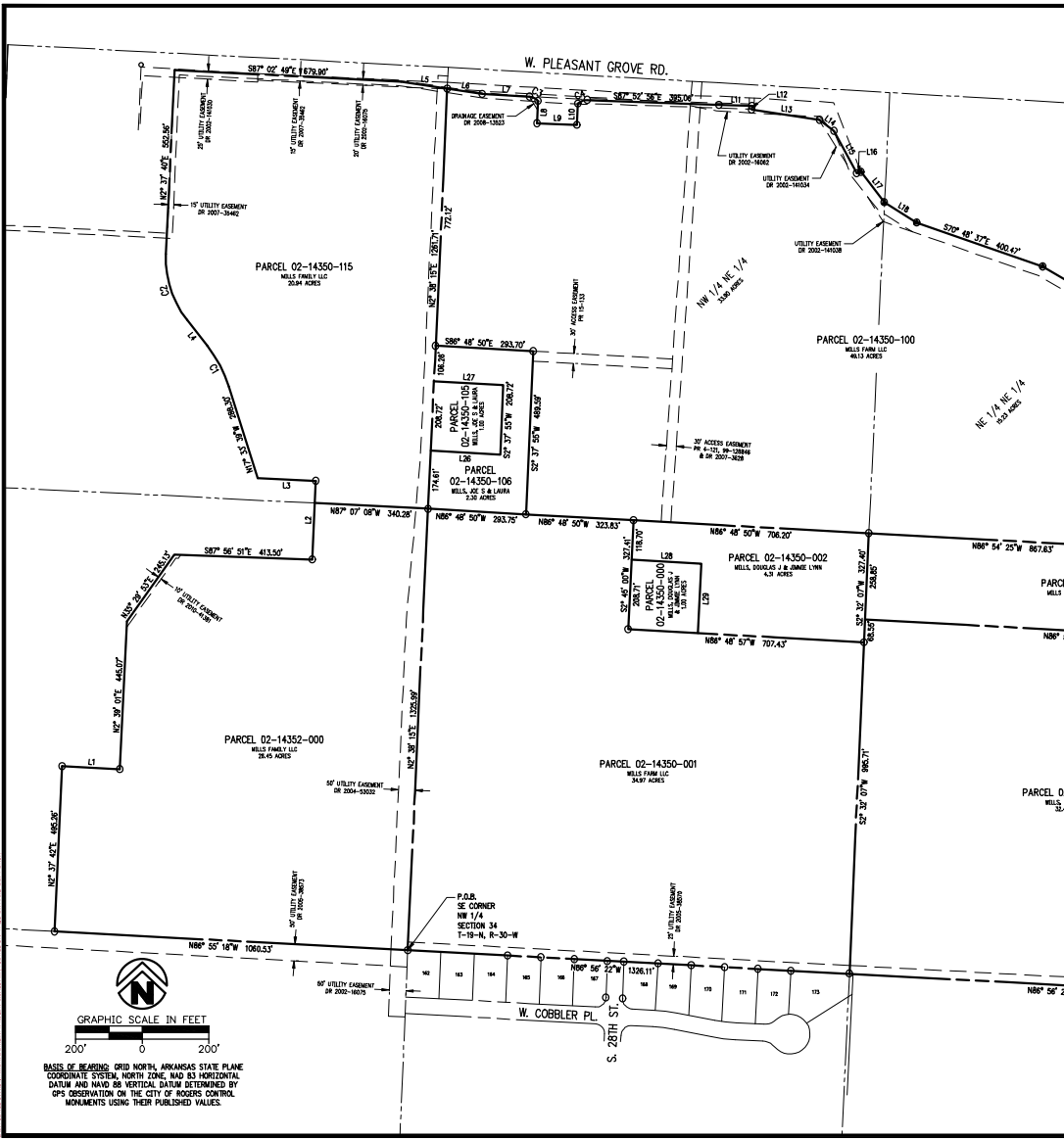
CURVE TABLE with columns: CURVE #, LENGTH, RADIUS, DELTA, CHORD DIRECTION, CHORD LENGTH. Rows C1 through C4.

PARCEL LINE TABLE with columns: LINE #, LENGTH, DIRECTION. Rows L1 through L29.



NOTES:

THE PROPERTY SURVEYED IS WITHIN THE MUNICIPAL LIMITS OF ROGERS, AR. THE ZONING CLASSIFICATIONS SHOWN ON THIS PLAT WERE OBTAINED FROM THE CITY OF ROGERS GIS SITE, AND REPRESENT THE ZONING CLASSIFICATION AT THE TIME OF THIS SURVEY. PROPERTY IS ZONED A-1. THE BOUNDARY DETERMINATION SHOWN HEREON WAS BASED UPON THE FOLLOWING DEEDS, PLATS AND COURT ORDERS AND NO OTHERS: DEED RECORDS 1990-22560, 2005-37232, 2005-37235, 2008-10514, 2008-10517, 2008-10550, 2008-13526, 2011-43024, 2011-43026, 2011-43028, 2011-43030, 2011-43032, 2011-43034, 2011-43036, 2011-43038, 2011-43040, 2011-43042, 2011-43044, 2011-43046, 2011-43048, 2011-43050, 2011-43052, 2011-43054, 2011-43056, 2011-43058, 2011-43060, 2011-43062, 2011-43064, 2011-43066, 2011-43068, 2011-43070, 2011-43072, 2011-43074, 2011-43076, 2011-43078, 2011-43080, 2011-43082, 2011-43084, 2011-43086, 2011-43088, 2011-43090, 2011-43092, 2011-43094, 2011-43096, 2011-43098, 2011-43100, 2011-43102, 2011-43104, 2011-43106, 2011-43108, 2011-43110, 2011-43112, 2011-43114, 2011-43116, 2011-43118, 2011-43120, 2011-43122, 2011-43124, 2011-43126, 2011-43128, 2011-43130, 2011-43132, 2011-43134, 2011-43136, 2011-43138, 2011-43140, 2011-43142, 2011-43144, 2011-43146, 2011-43148, 2011-43150, 2011-43152, 2011-43154, 2011-43156, 2011-43158, 2011-43160, 2011-43162, 2011-43164, 2011-43166, 2011-43168, 2011-43170, 2011-43172, 2011-43174, 2011-43176, 2011-43178, 2011-43180, 2011-43182, 2011-43184, 2011-43186, 2011-43188, 2011-43190, 2011-43192, 2011-43194, 2011-43196, 2011-43198, 2011-43200, 2011-43202, 2011-43204, 2011-43206, 2011-43208, 2011-43210, 2011-43212, 2011-43214, 2011-43216, 2011-43218, 2011-43220, 2011-43222, 2011-43224, 2011-43226, 2011-43228, 2011-43230, 2011-43232, 2011-43234, 2011-43236, 2011-43238, 2011-43240, 2011-43242, 2011-43244, 2011-43246, 2011-43248, 2011-43250, 2011-43252, 2011-43254, 2011-43256, 2011-43258, 2011-43260, 2011-43262, 2011-43264, 2011-43266, 2011-43268, 2011-43270, 2011-43272, 2011-43274, 2011-43276, 2011-43278, 2011-43280, 2011-43282, 2011-43284, 2011-43286, 2011-43288, 2011-43290, 2011-43292, 2011-43294, 2011-43296, 2011-43298, 2011-43300, 2011-43302, 2011-43304, 2011-43306, 2011-43308, 2011-43310, 2011-43312, 2011-43314, 2011-43316, 2011-43318, 2011-43320, 2011-43322, 2011-43324, 2011-43326, 2011-43328, 2011-43330, 2011-43332, 2011-43334, 2011-43336, 2011-43338, 2011-43340, 2011-43342, 2011-43344, 2011-43346, 2011-43348, 2011-43350, 2011-43352, 2011-43354, 2011-43356, 2011-43358, 2011-43360, 2011-43362, 2011-43364, 2011-43366, 2011-43368, 2011-43370, 2011-43372, 2011-43374, 2011-43376, 2011-43378, 2011-43380, 2011-43382, 2011-43384, 2011-43386, 2011-43388, 2011-43390, 2011-43392, 2011-43394, 2011-43396, 2011-43398, 2011-43400, 2011-43402, 2011-43404, 2011-43406, 2011-43408, 2011-43410, 2011-43412, 2011-43414, 2011-43416, 2011-43418, 2011-43420, 2011-43422, 2011-43424, 2011-43426, 2011-43428, 2011-43430, 2011-43432, 2011-43434, 2011-43436, 2011-43438, 2011-43440, 2011-43442, 2011-43444, 2011-43446, 2011-43448, 2011-43450, 2011-43452, 2011-43454, 2011-43456, 2011-43458, 2011-43460, 2011-43462, 2011-43464, 2011-43466, 2011-43468, 2011-43470, 2011-43472, 2011-43474, 2011-43476, 2011-43478, 2011-43480, 2011-43482, 2011-43484, 2011-43486, 2011-43488, 2011-43490, 2011-43492, 2011-43494, 2011-43496, 2011-43498, 2011-43500, 2011-43502, 2011-43504, 2011-43506, 2011-43508, 2011-43510, 2011-43512, 2011-43514, 2011-43516, 2011-43518, 2011-43520, 2011-43522, 2011-43524, 2011-43526, 2011-43528, 2011-43530, 2011-43532, 2011-43534, 2011-43536, 2011-43538, 2011-43540, 2011-43542, 2011-43544, 2011-43546, 2011-43548, 2011-43550, 2011-43552, 2011-43554, 2011-43556, 2011-43558, 2011-43560, 2011-43562, 2011-43564, 2011-43566, 2011-43568, 2011-43570, 2011-43572, 2011-43574, 2011-43576, 2011-43578, 2011-43580, 2011-43582, 2011-43584, 2011-43586, 2011-43588, 2011-43590, 2011-43592, 2011-43594, 2011-43596, 2011-43598, 2011-43600, 2011-43602, 2011-43604, 2011-43606, 2011-43608, 2011-43610, 2011-43612, 2011-43614, 2011-43616, 2011-43618, 2011-43620, 2011-43622, 2011-43624, 2011-43626, 2011-43628, 2011-43630, 2011-43632, 2011-43634, 2011-43636, 2011-43638, 2011-43640, 2011-43642, 2011-43644, 2011-43646, 2011-43648, 2011-43650, 2011-43652, 2011-43654, 2011-43656, 2011-43658, 2011-43660, 2011-43662, 2011-43664, 2011-43666, 2011-43668, 2011-43670, 2011-43672, 2011-43674, 2011-43676, 2011-43678, 2011-43680, 2011-43682, 2011-43684, 2011-43686, 2011-43688, 2011-43690, 2011-43692, 2011-43694, 2011-43696, 2011-43698, 2011-43700, 2011-43702, 2011-43704, 2011-43706, 2011-43708, 2011-43710, 2011-43712, 2011-43714, 2011-43716, 2011-43718, 2011-43720, 2011-43722, 2011-43724, 2011-43726, 2011-43728, 2011-43730, 2011-43732, 2011-43734, 2011-43736, 2011-43738, 2011-43740, 2011-43742, 2011-43744, 2011-43746, 2011-43748, 2011-43750, 2011-43752, 2011-43754, 2011-43756, 2011-43758, 2011-43760, 2011-43762, 2011-43764, 2011-43766, 2011-43768, 2011-43770, 2011-43772, 2011-43774, 2011-43776, 2011-43778, 2011-43780, 2011-43782, 2011-43784, 2011-43786, 2011-43788, 2011-43790, 2011-43792, 2011-43794, 2011-43796, 2011-43798, 2011-43800, 2011-43802, 2011-43804, 2011-43806, 2011-43808, 2011-43810, 2011-43812, 2011-43814, 2011-43816, 2011-43818, 2011-43820, 2011-43822, 2011-43824, 2011-43826, 2011-43828, 2011-43830, 2011-43832, 2011-43834, 2011-43836, 2011-43838, 2011-43840, 2011-43842, 2011-43844, 2011-43846, 2011-43848, 2011-43850, 2011-43852, 2011-43854, 2011-43856, 2011-43858, 2011-43860, 2011-43862, 2011-43864, 2011-43866, 2011-43868, 2011-43870, 2011-43872, 2011-43874, 2011-43876, 2011-43878, 2011-43880, 2011-43882, 2011-43884, 2011-43886, 2011-43888, 2011-43890, 2011-43892, 2011-43894, 2011-43896, 2011-43898, 2011-43900, 2011-43902, 2011-43904, 2011-43906, 2011-43908, 2011-43910, 2011-43912, 2011-43914, 2011-43916, 2011-43918, 2011-43920, 2011-43922, 2011-43924, 2011-43926, 2011-43928, 2011-43930, 2011-43932, 2011-43934, 2011-43936, 2011-43938, 2011-43940, 2011-43942, 2011-43944, 2011-43946, 2011-43948, 2011-43950, 2011-43952, 2011-43954, 2011-43956, 2011-43958, 2011-43960, 2011-43962, 2011-43964, 2011-43966, 2011-43968, 2011-43970, 2011-43972, 2011-43974, 2011-43976, 2011-43978, 2011-43980, 2011-43982, 2011-43984, 2011-43986, 2011-43988, 2011-43990, 2011-43992, 2011-43994, 2011-43996, 2011-43998, 2011-44000, 2011-44002, 2011-44004, 2011-44006, 2011-44008, 2011-44010, 2011-44012, 2011-44014, 2011-44016, 2011-44018, 2011-44020, 2011-44022, 2011-44024, 2011-44026, 2011-44028, 2011-44030, 2011-44032, 2011-44034, 2011-44036, 2011-44038, 2011-44040, 2011-44042, 2011-44044, 2011-44046, 2011-44048, 2011-44050, 2011-44052, 2011-44054, 2011-44056, 2011-44058, 2011-44060, 2011-44062, 2011-44064, 2011-44066, 2011-44068, 2011-44070, 2011-44072, 2011-44074, 2011-44076, 2011-44078, 2011-44080, 2011-44082, 2011-44084, 2011-44086, 2011-44088, 2011-44090, 2011-44092, 2011-44094, 2011-44096, 2011-44098, 2011-44100, 2011-44102, 2011-44104, 2011-44106, 2011-44108, 2011-44110, 2011-44112, 2011-44114, 2011-44116, 2011-44118, 2011-44120, 2011-44122, 2011-44124, 2011-44126, 2011-44128, 2011-44130, 2011-44132, 2011-44134, 2011-44136, 2011-44138, 2011-44140, 2011-44142, 2011-44144, 2011-44146, 2011-44148, 2011-44150, 2011-44152, 2011-44154, 2011-44156, 2011-44158, 2011-44160, 2011-44162, 2011-44164, 2011-44166, 2011-44168, 2011-44170, 2011-44172, 2011-44174, 2011-44176, 2011-44178, 2011-44180, 2011-44182, 2011-44184, 2011-44186, 2011-44188, 2011-44190, 2011-44192, 2011-44194, 2011-44196, 2011-44198, 2011-44200, 2011-44202, 2011-44204, 2011-44206, 2011-44208, 2011-44210, 2011-44212, 2011-44214, 2011-44216, 2011-44218, 2011-44220, 2011-44222, 2011-44224, 2011-44226, 2011-44228, 2011-44230, 2011-44232, 2011-44234, 2011-44236, 2011-44238, 2011-44240, 2011-44242, 2011-44244, 2011-44246, 2011-44248, 2011-44250, 2011-44252, 2011-44254, 2011-44256, 2011-44258, 2011-44260, 2011-44262, 2011-44264, 2011-44266, 2011-44268, 2011-44270, 2011-44272, 2011-44274, 2011-44276, 2011-44278, 2011-44280, 2011-44282, 2011-44284, 2011-44286, 2011-44288, 2011-44290, 2011-44292, 2011-44294, 2011-44296, 2011-44298, 2011-44300, 2011-44302, 2011-44304, 2011-44306, 2011-44308, 2011-44310, 2011-44312, 2011-44314, 2011-44316, 2011-44318, 2011-44320, 2011-44322, 2011-44324, 2011-44326, 2011-44328, 2011-44330, 2011-44332, 2011-44334, 2011-44336, 2011-44338, 2011-44340, 2011-44342, 2011-44344, 2011-44346, 2011-44348, 2011-44350, 2011-44352, 2011-44354, 2011-44356, 2011-44358, 2011-44360, 2011-44362, 2011-44364, 2011-44366, 2011-44368, 2011-44370, 2011-44372, 2011-44374, 2011-44376, 2011-44378, 2011-44380, 2011-44382, 2011-44384, 2011-44386, 2011-44388, 2011-44390, 2011-44392, 2011-44394, 2011-44396, 2011-44398, 2011-44400, 2011-44402, 2011-44404, 2011-44406, 2011-44408, 2011-44410, 2011-44412, 2011-44414, 2011-44416, 2011-44418, 2011-44420, 2011-44422, 2011-44424, 2011-44426, 2011-44428, 2011-44430, 2011-44432, 2011-44434, 2011-44436, 2011-44438, 2011-44440, 2011-44442, 2011-44444, 2011-44446, 2011-44448, 2011-44450, 2011-44452, 2011-44454, 2011-44456, 2011-44458, 2011-44460, 2011-44462, 2011-44464, 2011-44466, 2011-44468, 2011-44470, 2011-44472, 2011-44474, 2011-44476, 2011-44478, 2011-44480, 2011-44482, 2011-44484, 2011-44486, 2011-44488, 2011-44490, 2011-44492, 2011-44494, 2011-44496, 2011-44498, 2011-44500, 2011-44502, 2011-44504, 2011-44506, 2011-44508, 2011-44510, 2011-44512, 2011-44514, 2011-44516, 2011-44518, 2011-44520, 2011-44522, 2011-44524, 2011-44526, 2011-44528, 2011-44530, 2011-44532, 2011-44534, 2011-44536, 2011-44538, 2011-44540, 2011-44542, 2011-44544, 2011-44546, 2011-44548, 2011-44550, 2011-44552, 2011-44554, 2011-44556, 2011-44558, 2011-44560, 2011-44562, 2011-44564, 2011-44566, 2011-44568, 2011-44570, 2011-44572, 2011-44574, 2011-44576, 2011-44578, 2011-44580, 2011-44582, 2011-44584, 2011-44586, 2011-44588, 2011-44590, 2011-44592, 2011-44594, 2011-44596, 2011-44598, 2011-44600, 2011-44602, 2011-44604, 2011-44606, 2011-44608, 2011-44610, 2011-44612, 2011-44614, 2011-44616, 2011-44618, 2011-44620, 2011-44622, 2011-44624, 2011-44626, 2011-44628, 2011-44630, 2011-44632, 2011-44634, 2011-44636, 2011-44638, 2011-44640, 2011-44642, 2011-44644, 2011-44646, 2011-44648, 2011-44650, 2011-44652, 2011-44654, 2011-44656, 2011-44658, 2011-44660, 2011-44662, 2011-44664, 2011-44666, 2011-44668, 2011-44670, 2011-44672, 2011-44674, 2011-44676, 2011-44678, 2011-44680,



CURVE TABLE					
CURVE #	LENGTH	RADIUS	DELTA	CHORD DIRECTION	CHORD LENGTH
C1	138.39'	390.00'	207°28'43"	N27°48'00"W	138.65'
C2	212.93'	300.00'	40°40'02"	N17°42'21"W	208.49'
C3	29.86'	38.24'	48°53'07"	S83°18'22"E	28.84'
C4	31.10'	37.97'	47°00'30"	N88°36'46"E	30.29'

PARCEL LINE TABLE		
LINE #	LENGTH	DIRECTION
L1	173.88'	S86°50'28"E
L2	236.41'	N2°39'01"E
L3	174.08'	N87°20'59"W
L4	97.81'	N38°02'22"W
L5	141.32'	S81°20'05"E
L6	108.33'	S81°20'05"E
L7	141.30'	S86°44'50"E
L8	66.45'	S2°33'08"W
L9	118.84'	S87°23'34"E
L10	64.02'	N2°34'10"E
L11	98.88'	S88°11'22"E
L12	11.04'	S7°06'14"W
L13	205.97'	S81°10'04"E
L14	54.09'	S33°00'50"E
L15	143.75'	S28°15'17"E
L16	13.12'	N74°24'33"E
L17	114.97'	S37°46'17"E
L18	114.82'	S57°36'19"E
L19	234.87'	S59°56'00"E
L20	234.71'	S42°23'59"E
L21	13.65'	S38°27'15"E
L22	29.36'	S27°14'40"E
L23	239.78'	S88°31'28"W
L24	227.77'	N69°31'28"E
L25	175.00'	S39°22'55"E
L26	208.83'	N88°48'59"W
L27	208.71'	S88°48'57"E
L28	208.71'	S2°45'00"W

LEGEND

- FOUND ALUMINUM CAP
- FOUND R/W MARKER
- FOUND IRON PIN OR PIPE
- FOUND FENCE POST
- PROPERTY LINE
- EASEMENT LINE
- 1/16 SECTION LINE

LAND SURVEYOR'S DECLARATION:
 I HEREBY DECLARE THAT ON THE 18TH DAY OF JANUARY, 2017 THE HEREON PLATTED AND DESCRIBED SURVEY WAS COMPLETED UNDER MY SUPERVISION AND THE IRON PINS WERE FOUND OR SET, AS SHOWN, TO THE BEST OF MY KNOWLEDGE AND BELIEF.

GRAFTON, TULL & ASSOCIATES, INC.
 BY KEVIN J. MONTGOMERY (AGENT)

KEVIN J. MONTGOMERY PLS 1460
 PROFESSIONAL LAND SURVEYOR



ALL COPIES THAT DO NOT BEAR AN ORIGINAL SEAL AND SIGNATURE MAY HAVE BEEN ALTERED. THE ABOVE DECLARATION SHALL NOT APPLY TO ANY COPY THAT DOES NOT BEAR AN ORIGINAL SEAL AND SIGNATURE.

STATE PLAT CODE: 500-19N-30W-0-34-104-04-1460
 STATE PLAT CODE: 500-19N-30W-0-35-430-04-1460

RECORD INFORMATION

BOUNDARY SURVEY PLAT
 PART NE 1/4 & PART NW 1/4 SEC 34, T-19-N, R-30-W
 PART SW 1/4 - NW 1/4 SEC 35, T-19-N, R-30-W

RESUBDIVISION:
 MILLS FAMILY

ARKANSAS
 ROGERS

KEY MAP

DELTA	DESCRIPTION	DATE

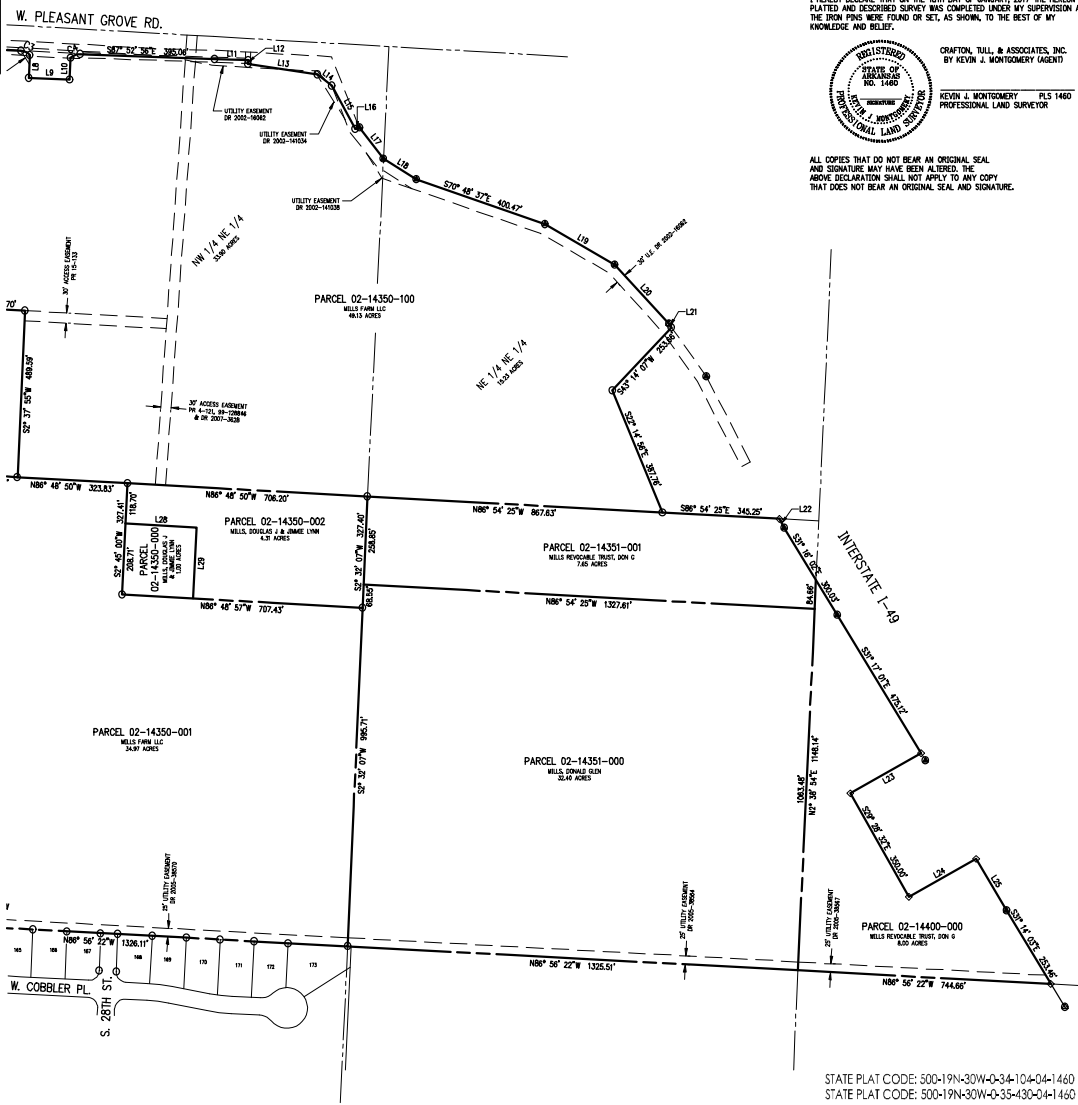
This document, and the ideas and designs incorporated herein, as an instrument of professional service, is the property of Grafton, Tull & Associates, Inc., and is not to be used, in whole or in part, for any other project, without the written authorization of Grafton, Tull & Associates, Inc.

© 2017 Grafton, Tull & Associates, Inc.
 PROJECT NO.: 16-112200
 ISSUE DATE: 01/18/2017
 SURVEYOR: K. MONTGOMERY
 CHECKED BY: _____
 SHEET NO.: _____

2 OF 3

CURVE #	LENGTH	RADIUS	DELTA	CHORD DIRECTION	CHORD LENGTH
C1	139.39'	390.00'	20°28'43"	N27°46'00"W	138.65'
C2	212.93'	300.00'	40°40'02"	N17°42'21"W	208.46'
C3	29.86'	36.24'	46°53'07"	S63°18'22"E	28.84'
C4	31.15'	37.97'	47°00'38"	N68°38'46"E	30.29'

LINE #	LENGTH	DIRECTION
L1	173.68'	S86°59'28"E
L2	236.41'	N2°39'01"E
L3	174.06'	N87°20'59"W
L4	97.81'	N08°02'22"W
L5	141.32'	S81°20'05"E
L6	108.33'	S81°20'05"E
L7	141.30'	S86°44'55"E
L8	66.45'	S2°33'08"W
L9	119.84'	S87°23'34"E
L10	64.02'	N2°34'10"E
L11	98.88'	S88°11'22"E
L12	11.04'	S3°06'14"W
L13	205.97'	S81°10'04"E
L14	54.09'	S33°00'50"E
L15	163.73'	S08°13'17"E
L16	13.12'	N74°24'53"E
L17	114.97'	S37°46'17"E
L18	114.82'	S57°36'19"E
L19	236.87'	S59°55'00"E
L20	234.71'	S42°23'59"E
L21	13.60'	S38°27'15"E
L22	29.36'	S27°14'40"E
L23	239.78'	S69°31'28"W
L24	227.77'	N69°31'28"E
L25	175.00'	S38°22'55"E
L26	208.83'	N88°48'50"W
L27	208.81'	S88°48'50"E
L28	208.71'	S88°48'57"E
L29	208.71'	S2°45'00"W



LAND SURVEYOR'S DECLARATION

I HEREBY DECLARE THAT ON THE 18TH DAY OF JANUARY, 2017 THE HEREON PLATED AND DESCRIBED SURVEY WAS COMPLETED UNDER MY SUPERVISION AND THE IRON PINS WERE FOUND OR SET, AS SHOWN, TO THE BEST OF MY KNOWLEDGE AND BELIEF.



CRAFTON, TULL & ASSOCIATES, INC.
BY KEVIN J. MONTGOMERY (AGENT)
KEVIN J. MONTGOMERY PLS 1460
PROFESSIONAL LAND SURVEYOR

ALL COPIES THAT DO NOT BEAR AN ORIGINAL SEAL AND SIGNATURE MAY HAVE BEEN ALTERED. THE ABOVE DECLARATION SHALL NOT APPLY TO ANY COPY THAT DOES NOT BEAR AN ORIGINAL SEAL AND SIGNATURE.

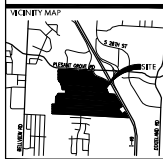
RECORD INFORMATION

BOUNDARY SURVEY PLAT
PART N 1/4 & PART NW 1/4 SEC 34, T-19-N, R-03-W
PART SW 1/4 - NW 1/4 SEC 35, T-19-N, R-03-W

PREPARED FOR:
MILLS FAMILY

ARKANSAS

ROGERS



DELTA	DESCRIPTION	DATE

This document, and the ideas and designs incorporated herein, as an instrument of professional service, is the property of Crafton, Tull & Associates, Inc., and is not to be used, in whole or in part, for any other project, without the written authorization of Crafton, Tull & Associates, Inc.



PROJECT NO.: 16-12200
ISSUE DATE: 01/18/2017
CLIENT: K. MONTGOMERY
CHECKED BY:
SHEET NO.: 3 OF 3

STATE PLAT CODE: 500-19N-30W-0-34-104-04-1-460
STATE PLAT CODE: 500-19N-30W-0-35-430-04-1-460