

152 NORTH LA BREA BOULEVARD

THE ARCHWAY BUILDING | LOS ANGELES, CA



A PRIME RETAIL | SHOWROOM | CREATIVE | GALLERY OPPORTUNITY
IN THE HEART OF THE LEGENDARY LA BREA CORRIDOR



RUSHMORE
EQUITIES

THE DETAILS

THE SPACE

± 1,550 SF Ground Floor Retail | Showroom | Gallery | Creative Space

THE ASK

\$3.50 PSF NNN (Very low Nets, estimated at ± \$0.55 PSF)

THE NEIGHBORHOOD

Curated mix of leading streetwear and fashion, galleries, design showrooms, and destination dining (including Stüssy, Union, Undeclared, Sugarfish, Stone Island, Sycamore Kitchen, American Rag, and others).



THE STORY

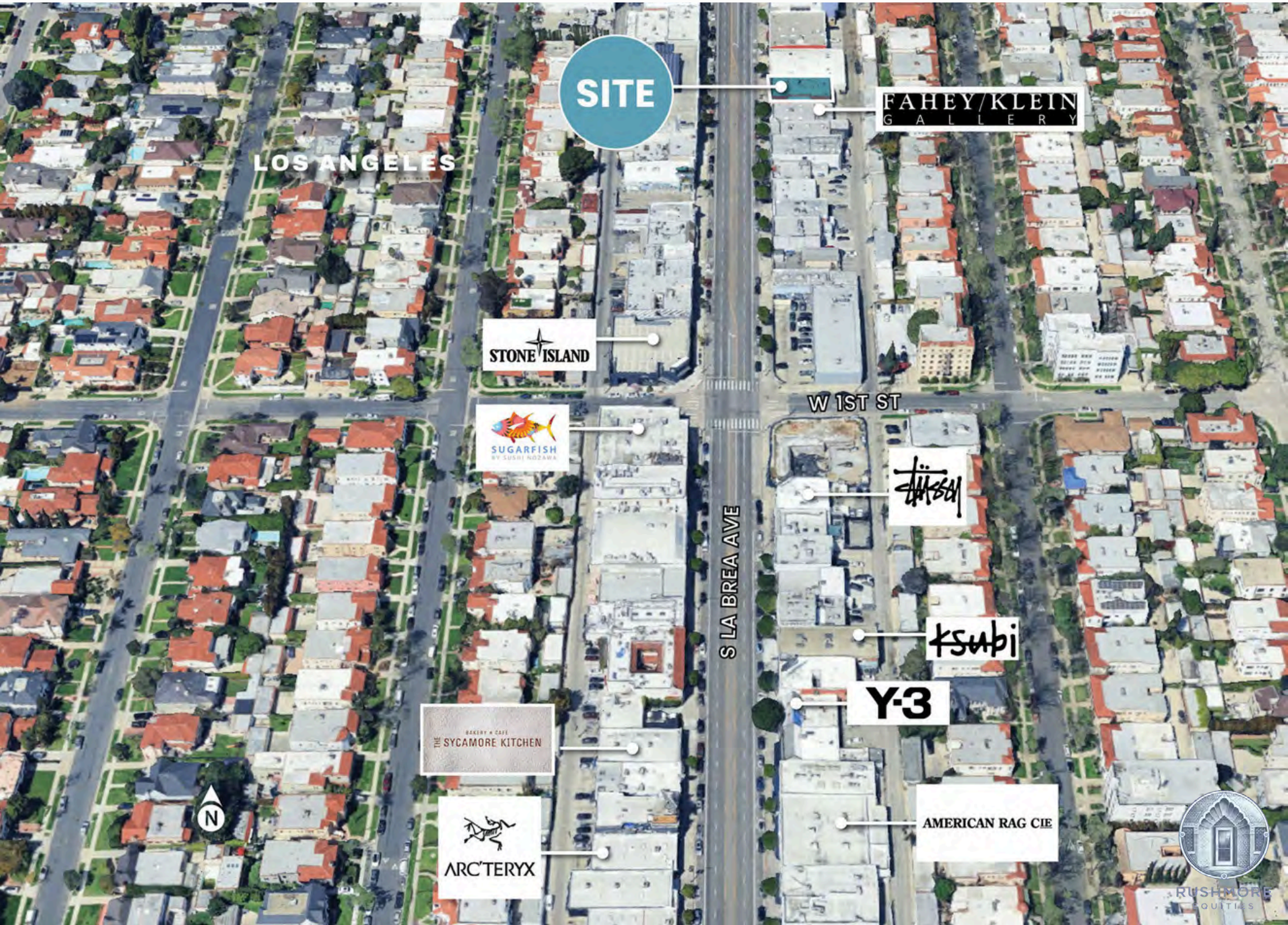
THE ARCHWAY BUILDING IS A CHARACTER-RICH PROPERTY WITH STRONG PRESENCE ON LA BREA, JUST SOUTH OF BEVERLY BOULEVARD. THE GROUND FLOOR SPACE IS WIDE, OPEN, AND LIGHT-FILLED, WITH HIGH CEILINGS AND FLEXIBLE POTENTIAL. SURROUNDED BY A CURATED MIX OF FASHION, DESIGN, MUSIC, AND ART, AND POSITIONED AT THE INTERSECTION OF MID-CITY, HANCOCK PARK, AND BEVERLY GROVE, THE PROPERTY BENEFITS FROM CONSISTENT DAYTIME AND EVENING FOOT TRAFFIC.



THE SPACE



THE NEIGHBORHOOD



SITE

LOS ANGELES

FAHEY/KLEIN
GALLERY

STONE ISLAND

SUGARFISH
BY SUSHI NOZAKA

W 1ST ST

STUSSY

S LA BREA AVE

KSUBI

Y-3

BAKERY & CAFE
THE SYCAMORE KITCHEN

ARC'TERYX

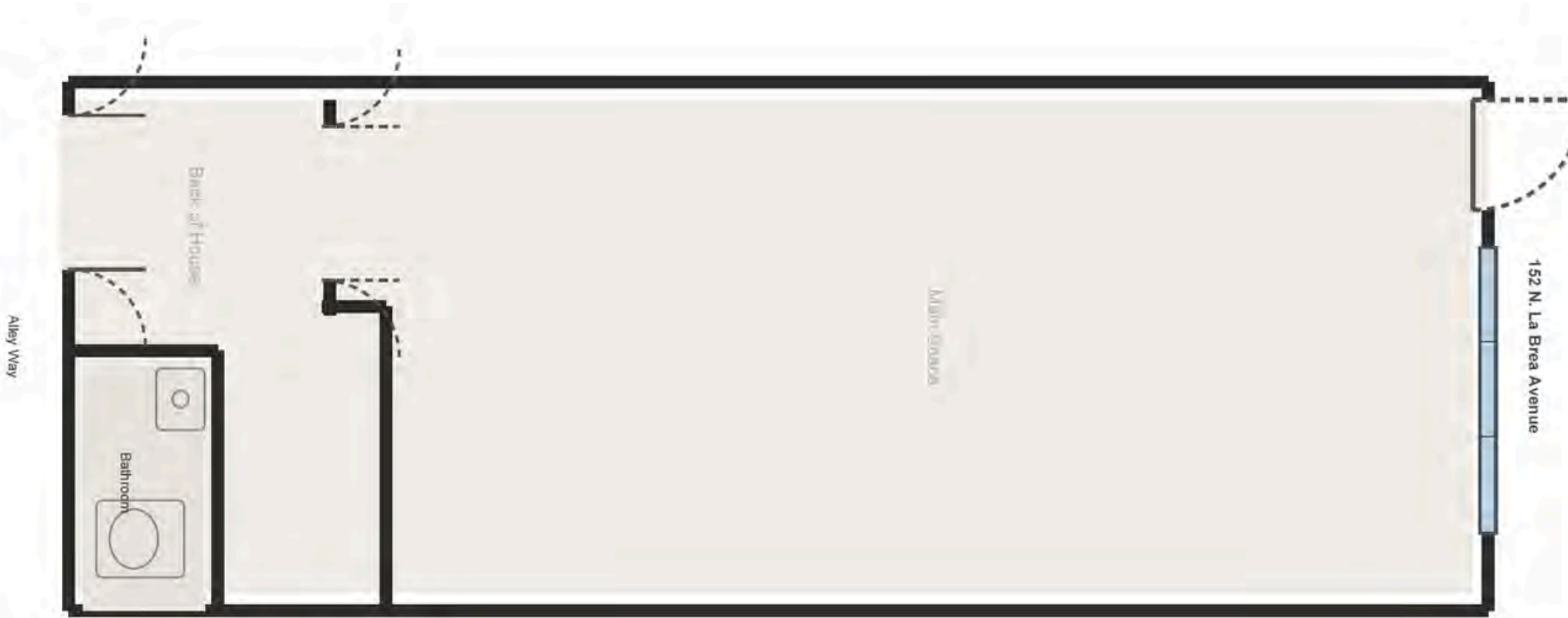
AMERICAN RAG CIE

N



RUSHMORE
EQUITIES

THE FLOOR PLAN





RUSHMORE
EQUITIES

NOW LEASING

424.274.2321

THE ARCHWAY | 152-154 N LA BREA AVE

PRIME ± 1,550 SQUARE FOOT RETAIL | CREATIVE SPACE

HELLO@RUSHMOREEQUITIES.COM



CREATION