



COMMERCIAL FOR SALE

21685 Northland Drive, Paris, MI

ERIC FINNIGAN

616 229 0658

ericf@workwithMOXIE.com

MAX GROVER, CCIM

616 890 7794

maxg@workwithMOXIE.com



LISTING INFORMATION

21685 Northland Drive, Paris, MI

✘ Building 1:

- Size: 27,647 sq. ft., including 7,649 sq. ft. of office space.
- Dimensions: Includes a 40' x 38' storage pole building (1,520 sq. ft., not in total sq. ft.).
- Features: Classrooms, private offices, reception area, kitchen, truck well, warehouse space, and four bathrooms.
- Office Details: Vinyl tile floors, drywall walls, acoustic tile ceilings, and fluorescent lighting. Heated by forced air gas with central A/C.
- Warehouse Details: Radiant heat, concrete floors, insulated walls, exposed ceilings, and 16' ceiling height.

✘ Building 2:

- Size: 6,063 sq. ft., including 5,287 sq. ft. of finished space.
- Dimensions: Approximately 48' x 98' with a front office bump-out.
- Features: Classrooms, private offices, kitchen, breakroom, receiving bay, and four bathrooms.
- Office Details: Carpet and vinyl tile flooring, drywall walls, acoustic ceilings, and fluorescent lighting.
- Receiving Bay: Concrete floors, exposed metal ceiling, with a ceiling height from 18.8' at the peak to 16' at the low end.

✘ Property Details:

- Lot Size: 5.51 acres (240,020 sq. ft.), rectangular layout with 500 ft. frontage and 480.04 ft. depth.
- Utilities: Separately metered gas and electric, shared septic, and individual wells.
- Access: Asphalt parking and frontage on Northland Drive, a two-lane blacktop street.

This versatile property offers prime functionality and is ideal for a range of commercial uses.

33,710

COMBINED SQUARE FEET

5.51

ACRES

\$985,000

SALE PRICE



workwithMOXIE.com



LISTING INFORMATION

21685 Northland Drive, Paris, MI

AVAILABLE AREA	33,710 SF
SALE PRICE	\$985,000
DATE AVAILABLE	IMMEDIATELY

DEMOGRAPHICS

	1 MILE	3 MILES	5 MILES
TOTAL POPULATION	3,447	11,600	27,100
MEDIAN AGE	41	42	36
HOUSEHOLDS	1,571	4,894	10,200
MEDIAN INCOME	\$61,500	\$55,900	\$52,200



workwithMOXIE.com



AERIAL PHOTO

21685 Northland Drive, Paris, MI



workwithMOXIE.com

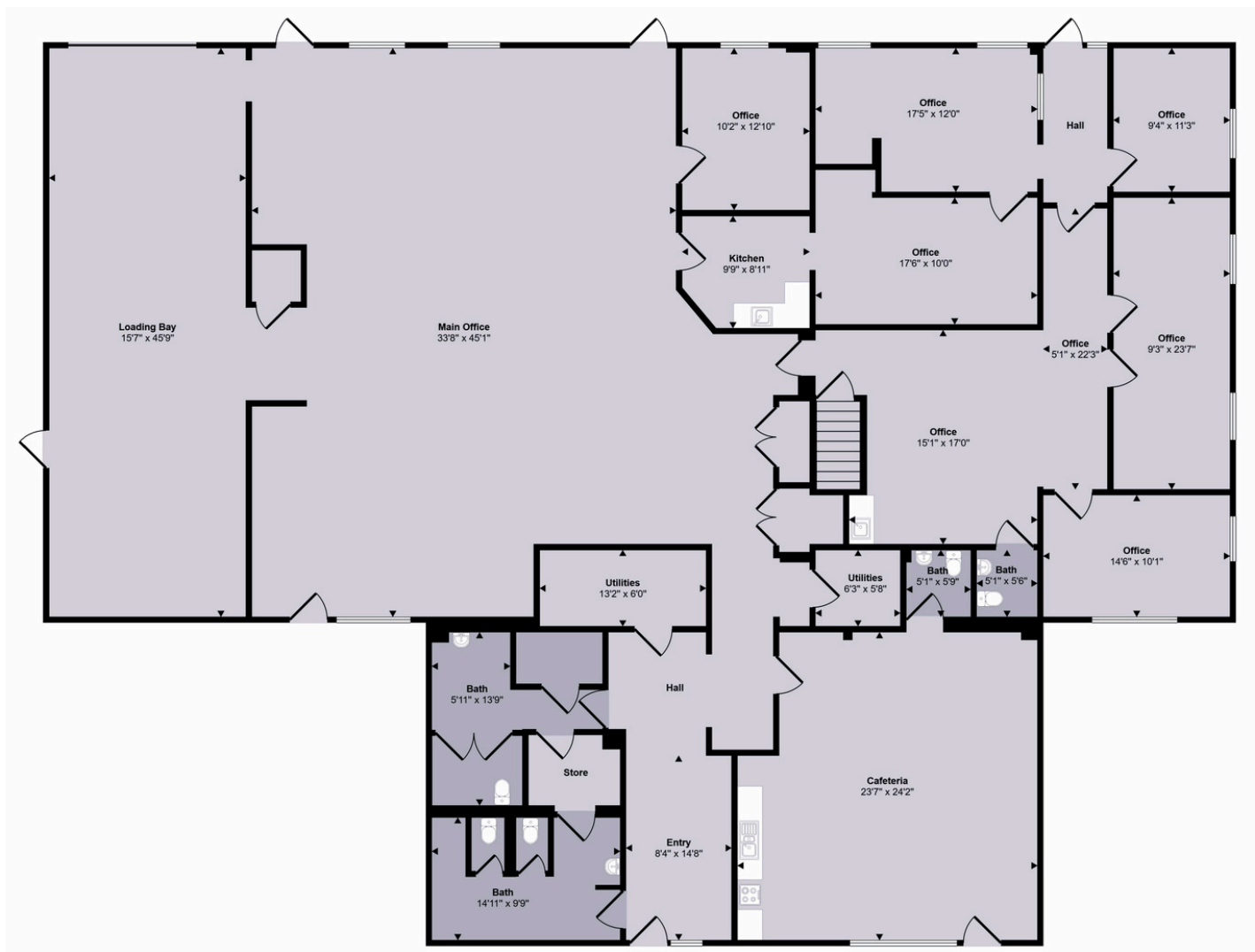


MAIN BUILDING FLOOR PLAN

21685 Northland Drive, Paris, MI



workwithMOXIE.com



SECONDARY OFFICE/WAREHOUSE BUILDING

1ST FLOOR

21685 Northland Drive, Paris, MI



workwithMOXIE.com



SECONDARY OFFICE/WAREHOUSE BUILDING

2ND FLOOR

21685 Northland Drive, Paris, MI



workwithMOXIE.com



LISTING IMAGES

21685 Northland Drive, Paris, MI



workwithMOXIE.com



MOXIE



MOXIE

workwithMOXIE.com



MOX



MOX

workwithMOXIE.com

CONTACT

MOXIE IS READY TO MOVE YOU FORWARD.



MOXIE

3437 Eastern Ave SE, Grand Rapids, MI 49508

Eric Finnigan

616 229 0658 | ericf@workwithMOXIE.com

Max Grover

616 890 7794 | maxg@workwithMOXIE.com

MOXIE Holdings, LLC DBA MOXIE Real Estate + Development (hereinafter referred to as "MOXIE") has prepared this Offering Memorandum (the "Memorandum") for informational purposes only. The information contained herein has been obtained from sources believed to be reliable; however, MOXIE makes no representations or warranties, express or implied, as to the accuracy or completeness of such information. All potential investors, tenants, buyers and/ or recipients of this Memorandum are hereby notified to conduct their own independent due diligence and verification of all information contained within.

MOXIE shall not be liable for any errors or omissions in the information, or for any damages (whether direct, indirect, consequential, incidental, special, punitive, or otherwise) arising out of or in connection with the furnishing, use of, or reliance upon this Memorandum.

This Memorandum is not intended to be, and should not be construed as, an offer to sell or a solicitation of an offer to buy any security or interest in any real estate. This Memorandum is presented in good faith and to the best of MOXIE's knowledge and understanding.